

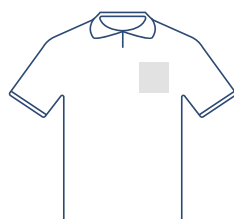
Make your Polo artwork print-ready



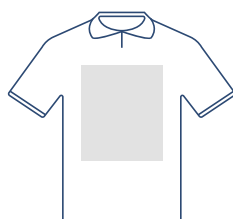
To smoothly transition from the design stage to printing, we have a simple guideline to help you!

1 Set up your file

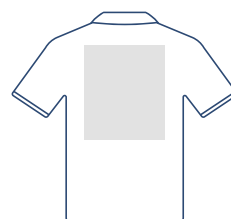
Use the print area as your artwork's total size and name it accordingly (i.e. chest.pdf):



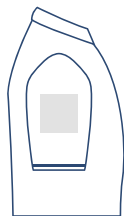
Chest Left
100 x 100 mm



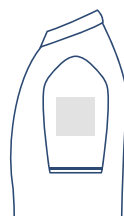
Front Large
300 x 350 mm



Back Large
300 x 350 mm



Shoulder Right
100 x 100 mm



Shoulder Left
100 x 100 mm

2 Adapt your artwork

Specifications depend on the **print technique**.

	Digital Full colour	Screenprint Solid colour/s	Embroidery Solid colour/s
colour	CMYK	PMS up to 4	PMS up to 12
vector	✓	✓	✓
pixel	✓	✗	✗
gradients	✓	✗	✗
min. font size	20 pt	20 pt	30 pt
min. object size	3 pt / 1 mm	3 pt / 1 mm	5,5 pt / 2 mm

3 Export to PDF

Export your artwork to PDF format and make sure your document **colour mode** is CMYK.

Want to know more?

Visit our [helpcenter](#) or [contact](#) our experts for personal advice.

In case not all specs are matched, we will always manually process, adapt and fix your artwork. You will be able to revise your digital proof before sending it to production.