

Make your artwork print-ready

To smoothly transition from the design stage to printing, we have a simple guideline to help you!

1 Set up your file

To ensure that your artwork is as crisp and clear as possible, we recommend a **300 dpi resolution** for every design. Please download our templates to make sure your design fits the layout correctly.



Trim Line



Safety Margin

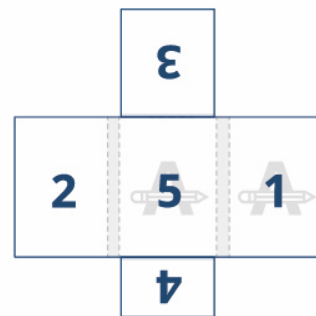
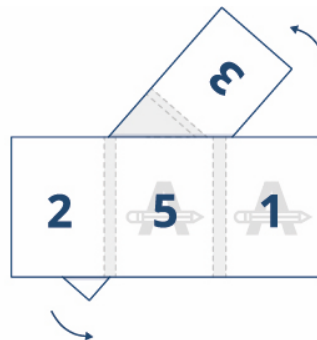
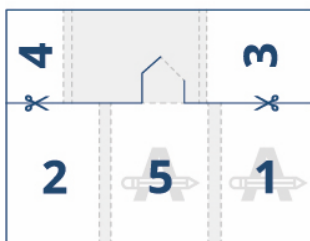
Avoid placing text or important details within this area.



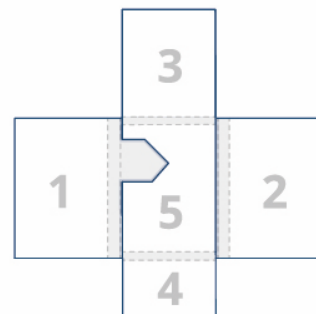
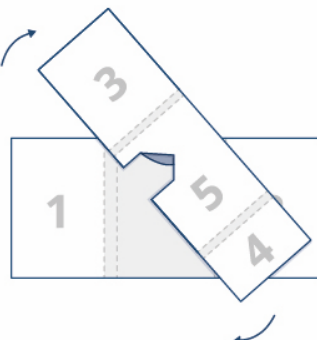
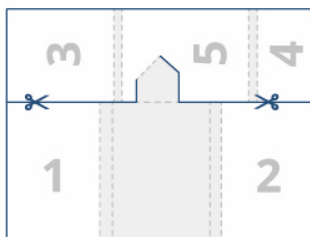
Fold Line



outside



inside



Want to know more?

Visit our **helpcenter** or **contact** our experts for personal advice.

In case not all specs are matched, we will always manually process, adapt and fix your artwork. You will be able to revise your digital proof before sending it to production.

Make your artwork print-ready

2 Extra checks

There are some checks to take into consideration before exporting your artwork:

- Same colour on different [types of paper](#) gives a different end result.
- All fonts and objects must be embedded.
- Check your layers for [overprint](#).



Here you can find a recap on the [most common print mistakes](#) and how to avoid them.

3 Export to PDF

Export your artwork to PDF format and make sure your document [colour mode](#) is CMYK.

Want to know more?

Visit our [helpcenter](#) or [contact](#) our experts for personal advice.

In case not all specs are matched, we will always manually process, adapt and fix your artwork. You will be able to revise your digital proof before sending it to production.