

Template Box with lid

Size: 310 x 220 x 40 mm

You can use this file as an extra layer in your layout programme.
Do not forget to make our template invisible or to delete it before you save your final PDF, or JPG with a high resolution.

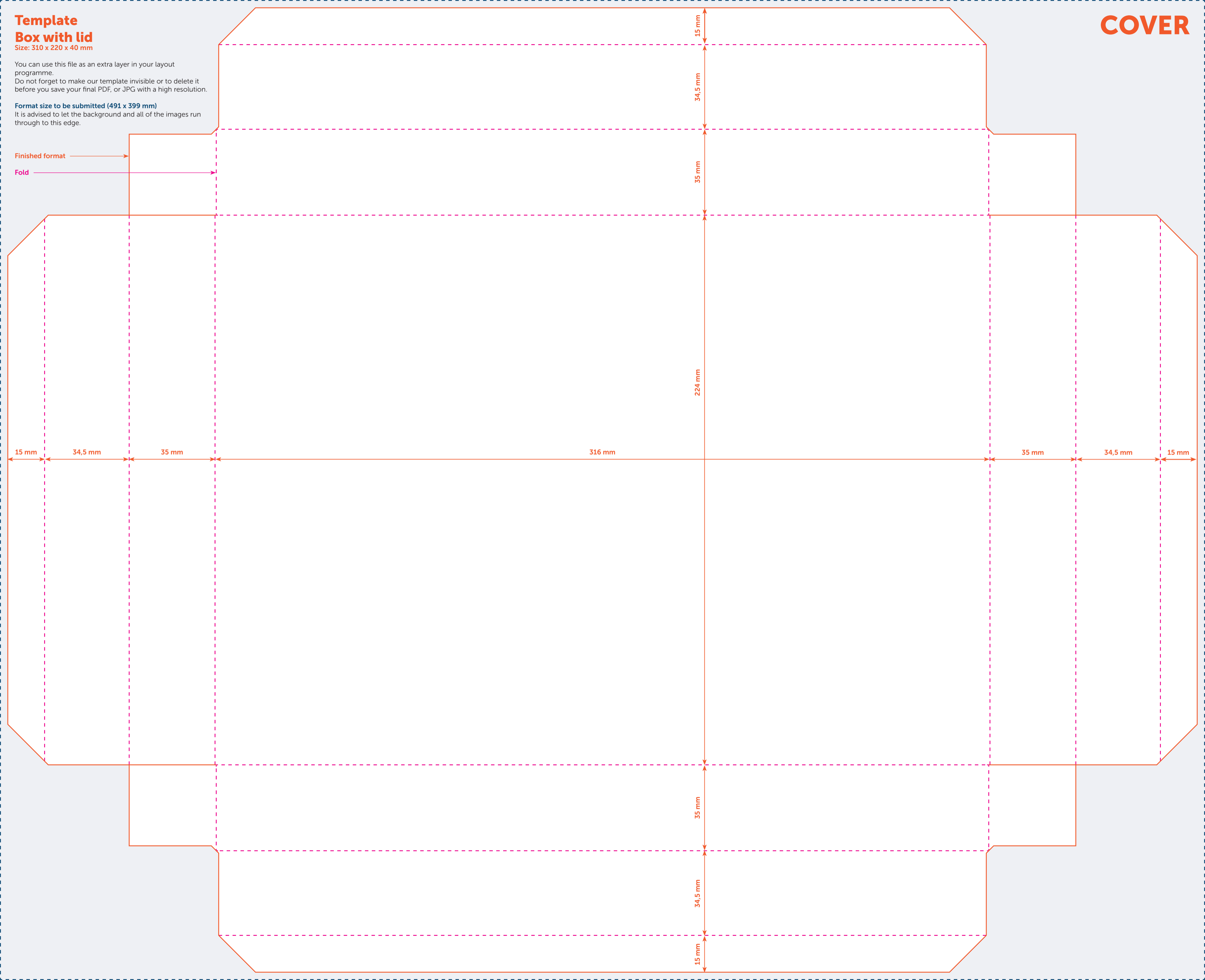
Format size to be submitted (491 x 399 mm)

It is advised to let the background and all of the images run through to this edge.

Finished format →

Fold →

COVER



Template Box with lid

Size: 310 x 220 x 40 mm

You can use this file as an extra layer in your layout programme.
Do not forget to make our template invisible or to delete it before you save your final PDF, or JPG with a high resolution.

Format size to be submitted (506 x 415 mm)

It is advised to let the background and all of the images run through to this edge.

Finished format

Fold

BOTTOM

