

# Make your Hoodie artwork print-ready



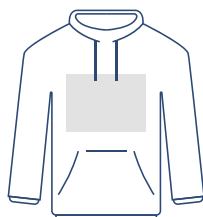
To smoothly transition from the design stage to printing, we have a simple guideline to help you!

## 1 Set up your file

Use the print area as your artwork's total size and name it accordingly (i.e. chest.pdf):



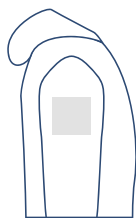
Chest Left  
100 x 100 mm



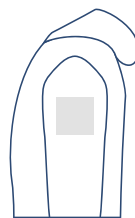
Front Large  
300 x 200 mm



Back Large  
300 x 350 mm



Shoulder Right  
100 x 100 mm



Shoulder Left  
100 x 100 mm

## 2 Adapt your artwork

Specifications depend on the **print technique**.

	Digital Full colour	Screenprint Solid colour/s	Embroidery Solid colour/s
colour	CMYK	PMS up to 4	PMS up to 12
vector	✓	✓	✓
pixel	✓	✗	✗
gradients	✓	✗	✗
min. font size	20 pt	20 pt	30 pt
min. object size	3 pt / 1 mm	3 pt / 1 mm	5,5 pt / 2 mm

## 3 Export to PDF

Export your artwork to PDF format and make sure your document **colour mode** is CMYK.

### Want to know more?

Visit our [helpcenter](#) or [contact](#) our experts for personal advice.

*In case not all specs are matched, we will always manually process, adapt and fix your artwork. You will be able to revise your digital proof before sending it to production.*