

# Vulcathene - Engineered for laboratory drainage



Vulcathene is the **market-leading chemical drainage system**, with proven performance in a wide range of laboratory applications worldwide for more than **65 years.**

Vulcathene is the only system that is fully BBA Approved for laboratory drainage.



Vulcathene is a specially designed and engineered system for the sole purpose of chemical containment and drainage and is a complete laboratory waste system, offering the widest range of laboratory bench items including sinks, wastes, drip cups, anti-siphon bottle traps, borosilicate base traps, dilution recovery traps and catchpots.

 **Vulcathene**

The professional's choice for **chemical drainage**

# Applications

Vulcathene is widely used within laboratories in a range of environments:



Hospitals



Universities



Schools



Pharmaceutical



Research



Industrial

Click  on the images to find out more.

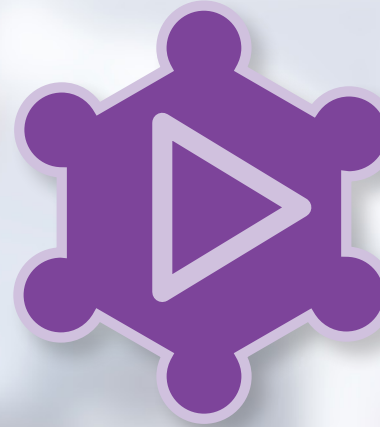
# Technical Support

Our experienced technical support team is on hand at every stage of a project from specification through to installation and offers product training, jointing demonstration, installation advice and on-site support to assist in the successful completion of every project.



Get in touch with our  
technical support team on  
**01543 47168** - option 2  
or email  
**Vulcathene@alixis.com**

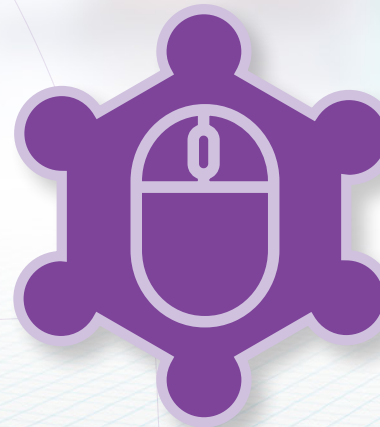
 *Click on the icons below to access a range of our installation tools.*



**Jointing Videos**



**Technical Brochure**



**E-learning**



**Branch Finder**

97

106

# Why Vulcathene?

- ★ Only system BBA approved for laboratory drainage
- ★ Most comprehensive range of laboratory bench items
- ★ Strong chemical resistance
- ★ Choice of Enfusion and Mechanical jointing system
- ★ Product training, jointing demonstrations and on-site support
- ★ Excellent technical support
- ★ Easily identified as carrying potentially hazardous chemicals



The violet stripes present on Vulcathene pipe have been selected in accordance with **BS1710 (Basic Identification Colours and Colour Code Indication)** to identify the pipe as potentially carrying acid and other chemical waste.

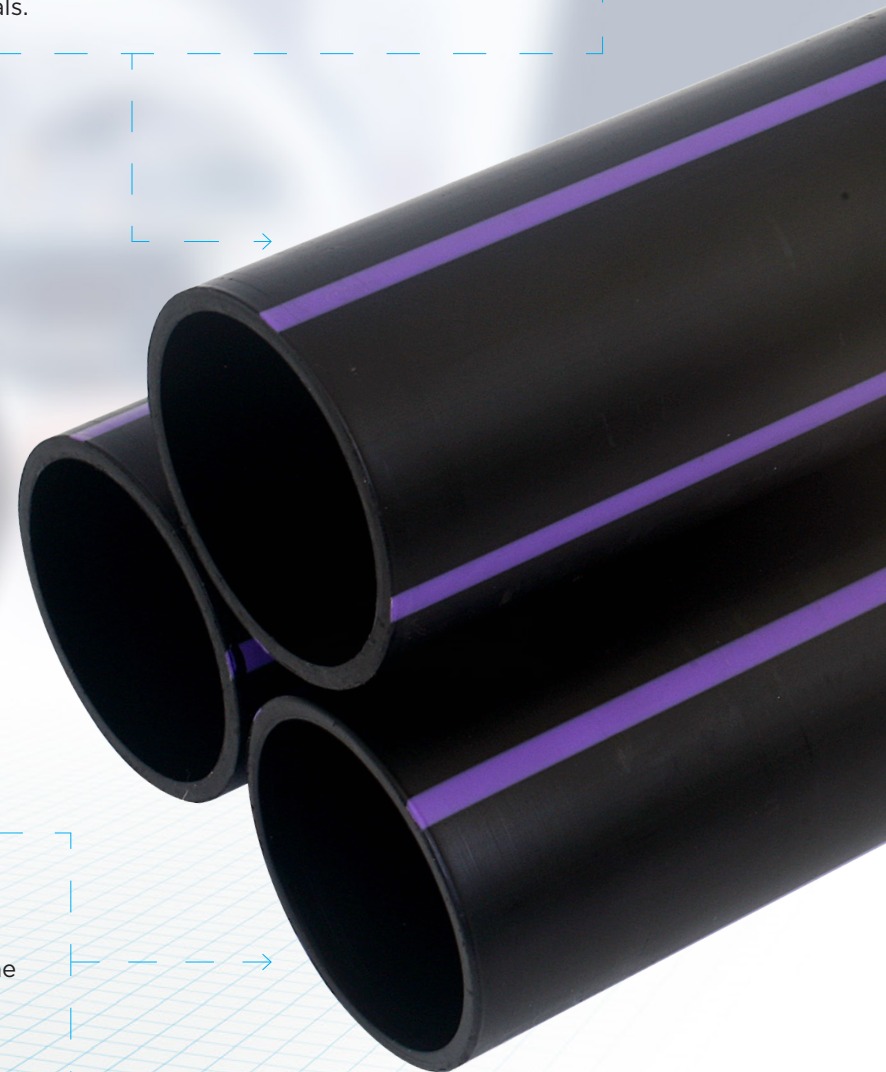
## Easy Identification

Vulcathene is differentiated from less suitable standard black soil and rainwater pipe by 4 x coloured (violet) stripes to aid installation teams on site, to ensure Vulcathene is correctly fitted for chemical waste applications. The easy identification also reduces health and safety risks for laboratory maintenance teams, who need to know which pipes are carrying potentially harmful chemicals.

## Chemical Resistance

Vulcathene pipe and fittings offer resistance to the widest range of acids, alkalis and bases, while also providing protection against ageing and embrittlement, enhancing the life span of the system.

With a wide operational temperature range from -20°C to 100°C, Vulcathene is proven to be able to handle any combination of chemicals at a range of temperatures.



# Jointing Methods

A choice of jointing systems allows installation efficiencies and ease of system extensions and maintenance, while offering the assurance of robust joint integrity through highly-engineered product performance.

## Mechanical

Recommended for joints to sinks and under benches, mechanical demountable jointing allows the ability to disassemble the system, so joints can be easily remade without affecting the joint's efficiency, allowing system changes to be made effectively.

- ✦ Manufactured in sizes 38mm (1½") to 102mm (4")
- ✦ Easy and quick to install
- ✦ Requires no specialist skills or equipment
- ✦ Easily modified - joints can be dismantled and re-used
- ✦ Swept bends, Tees, Wyes and Double wyes
- ✦ Reducers, Adaptors and Flanges

## Enfusion

Recommended for sections that are not easily accessible, such as ceiling voids or drainage stacks or when buried, electrofusion jointing produces reliable, welded joints in minutes, with the ability to make several joints at the same time, reducing installation time and costs.

Mechanical and Enfusion jointing methods can be utilised within the same system to provide complete flexibility of design, ease of maintenance and reconfiguration in use.

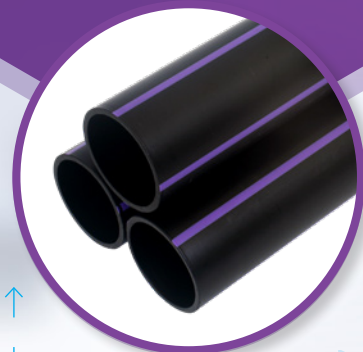
- ✦ Manufactured in sizes 38mm (1½") to 152mm (6")
- ✦ Sockets moulded with **integral** resistance wire in place
- ✦ Jointing completed by energising wire using "Enfusion Control Unit"
- ✦ Swept bends, Tees, Wyes and Double wyes
- ✦ Reducers, Adaptors and Flanges

106

# Vulcathene Product Range

The widest range of bench solutions enables the installation of a complete chemical drainage laboratory system.

For more detailed product information please download our technical brochure [here](#).



## Pipe:

Vulcathene pipe is produced in standard 4m lengths and is available in sizes from 38mm - 152mm



## Anti-Siphon Bottle Traps:

Vulcathene anti-siphon traps are designed to retain their seals under the most demanding conditions to prevent the backflow of potentially hazardous fumes.



## Borosilicate Glass Base Traps:

Vulcathene borosilicate glass base traps cater for particularly strong chemical solutions and organic solvents, while also aiding the identification and recovery of valuable solids.



## Sinks:

Vulcathene sinks are extremely robust and specially moulded with self-draining bases; bespoke sized sinks manufactured to a client's specific requirements can also be supplied.



## Dilution Recovery Traps:

Vulcathene dilution recovery traps are particularly useful where under bench height is limited and/or where additional dilution of chemicals is required.



## Wastes:

Vulcathene BSP threaded wastes are suitable for use with ceramic, porcelain, metal or plastic sink outlets. Slotted wastes are also available for use where the waste has to accept an overflow.

## Drip Cups:

Vulcathene drip cups have steep sloping sides to minimise splashing and wide rims for stability when mounting. Oval drip cups offer the flexibility of alternative flange fixings.

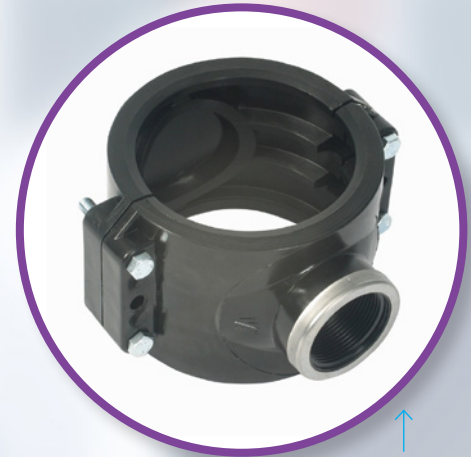
**Note:** All anti-siphon bottle and dilution recovery traps incorporate an adjustable / telescopic inlet for easier installation.

# Vulcathene fittings



## Air Admittance Valves:

Installed where stacks are to be terminated inside the building, these valves prevent the release of foul or toxic air while admitting air under conditions of reduced pressure in discharge pipes.



## Repair Clamp Saddles:

Enable easy connection of new branch pipes to existing Vulcathene stacks.



## Access Pipes:

Positioned at critical points in the system, access pipes simplify the inspection and cleaning of blockages within the pipe network.

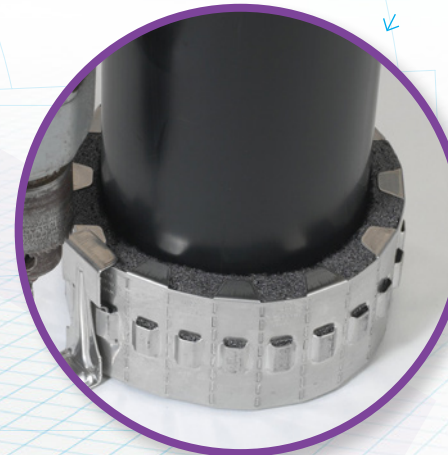
## Thermal Stress Relief Units:

With the flexibility to be installed vertically or horizontally, these units eliminate the stresses resulting from thermal movement.



## 90° Corner Branch:

Available in a mechanical or enfusion connection, Corner branches allow for flexibility in design and reduced installation costs due to the lower number of fittings needed.



## Fire Collars:

Vulcathene pipes, which pass through fire rated floors or walls, can be fire protected with the Unicollar intumescent fire protection collar, which is tested and approved for use on Vulcathene.



## Branch Network

Vulcathene is available from all BSS branches nationwide, with stock available to order for next day deliveries.

Click here to find your nearest branch



## Customer Support

### Customer Services

We pride ourselves on the high customer service levels we provide to each and every customer. Our customer services team offers support at every stage of a project from the point of order through to delivery and logistics and during the installation process.

Get in touch with our customer services team on

**0844 800 5509**

Further Information  
[www.durapipe.co.uk](http://www.durapipe.co.uk)  
or  
[www.bssindustrial.co.uk](http://www.bssindustrial.co.uk)



The professional's choice for **chemical drainage**

97

406