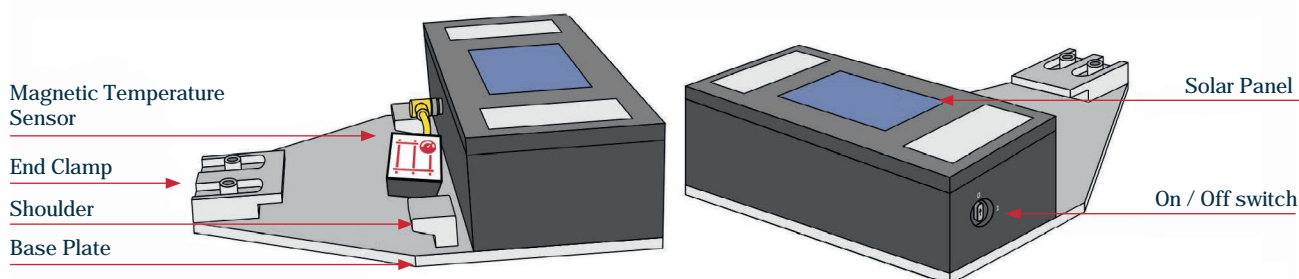
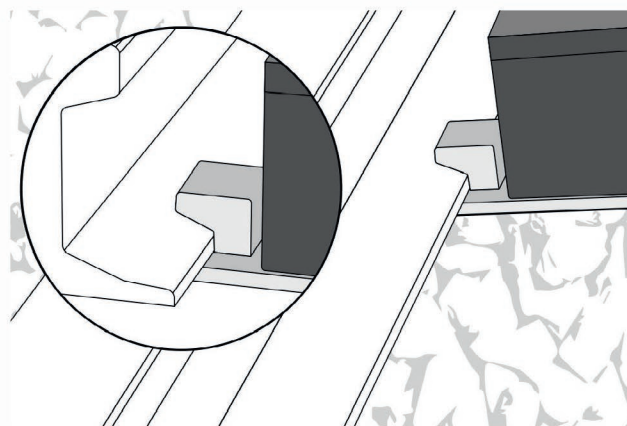
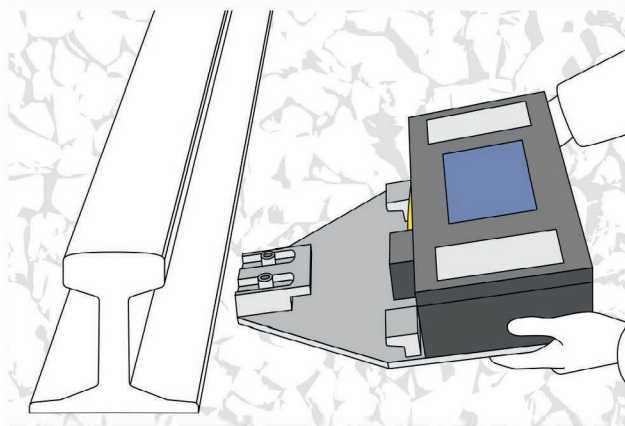


DYWIDAG Smart Temp

CRT MONITOR

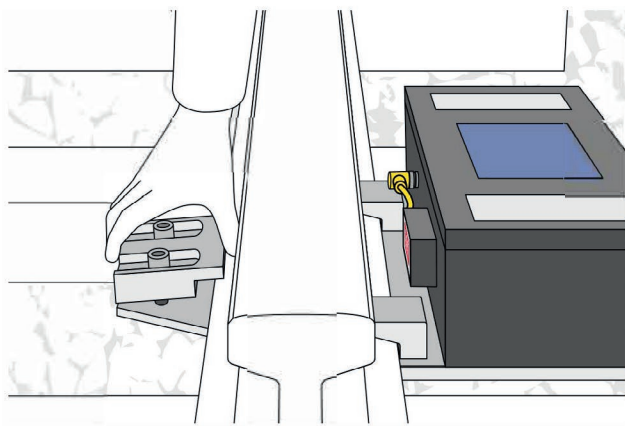


1. Smart Temp Glossary.



2. Create a small void in the ballast between sleepers and slide the Smart Temp base plate under the rail.

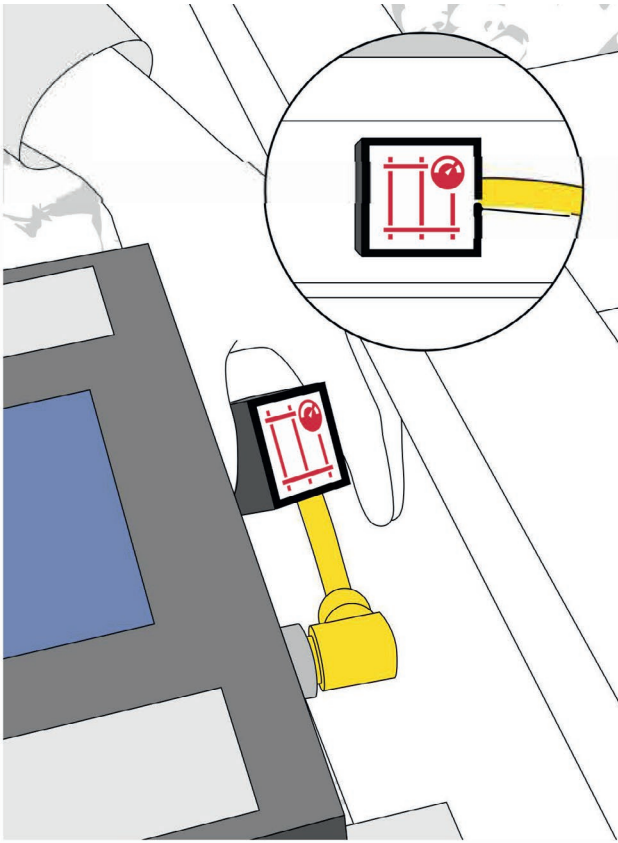
3. Ensure the Smart Temp base is flush under the rail. The shoulder should sit on the foot of the rail as shown.



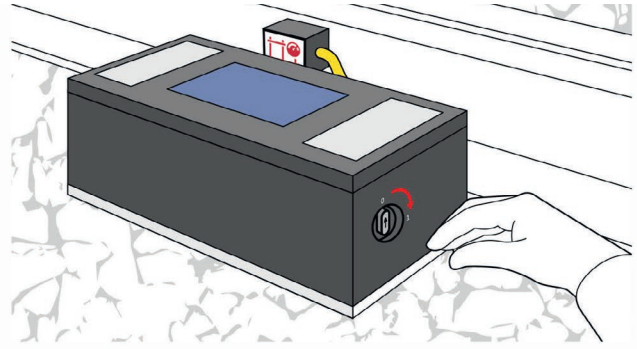
4. Slide the end clamp over the foot of the rail.

5. Tighten the bolts on the end clamp repeatedly and alternately using the M10 Allen key.

Install Guide Smart Temp



6. Relocate magnetic temperature sensor from the Smart Temp and attach to the rail web.



7. Switch the unit on by turning the on/off switch clockwise so the arrow points to '1'.

Call DYWIDAG
Customer Support:
0161 765 3447



8. Call DYWIDAG Customer Support to ensure device is connected. Provide them with the information listed.



9. The Smart Temp will continuously stream information via Infrastructure Intelligence



10. Charging the Smart Temp:
1. Remove Smart Temp from track.
 2. Unscrew the cap at the bottom of the Smart Temp.
 3. Insert charging cable and charge for a minimum of 4 hours, ideally overnight.
 4. Remove charging cable and ensure cap is screwed finger tight back onto the unit.

Removing the Smart Temp:

1. Switch off the Smart Temp.
2. Detach magnetic temperature sensor from the rail and attach it to the Smart Temp body.
3. Unscrew the bolts on the end clamp using the 10mm Allen key.
4. Remove the Smart Temp from track.



GET IN TOUCH

OUR HEAD OFFICE

Datum House, The Pavilions, Bridge Hall Lane, Bury, Lancashire, BL9 7NX

CALL US

+44 161 797 5511

EMAIL US

info@dywidag-systems.com

FOLLOW US

