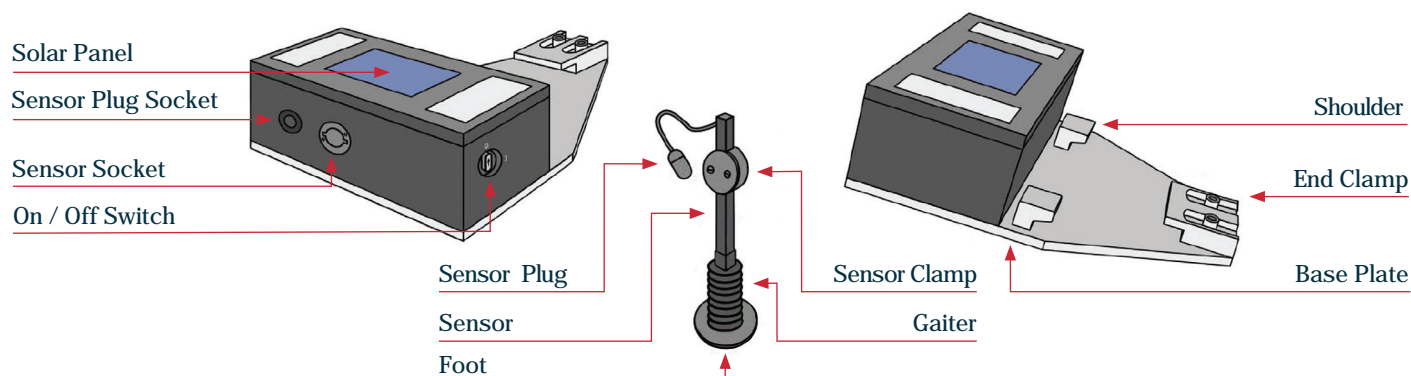
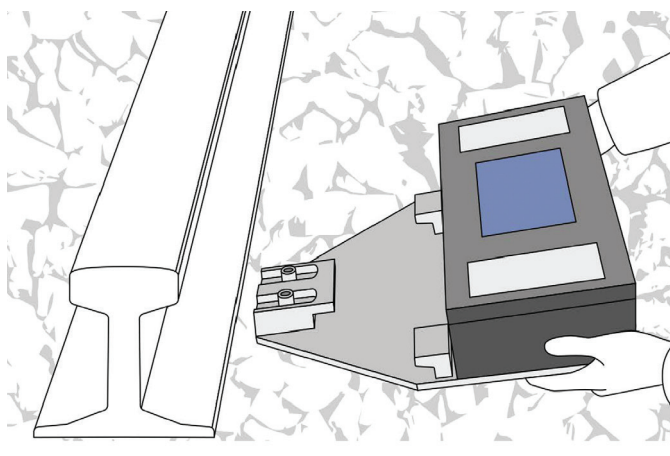


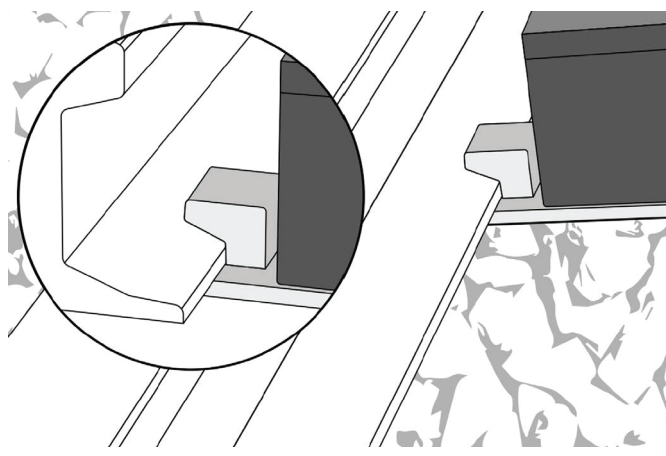
DYWIDAG Void Monitor



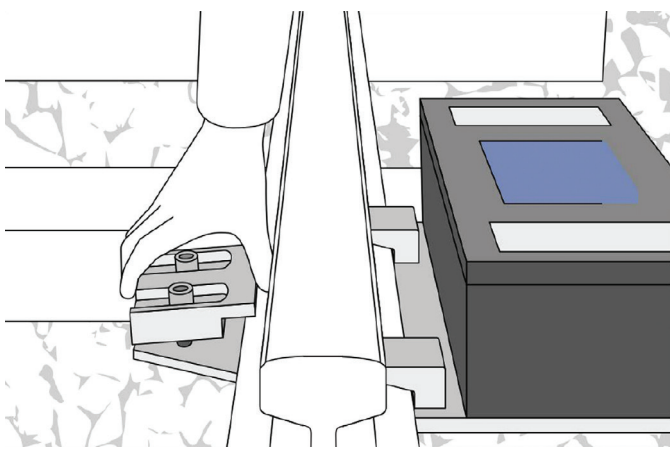
1. Void Monitor Glossary.



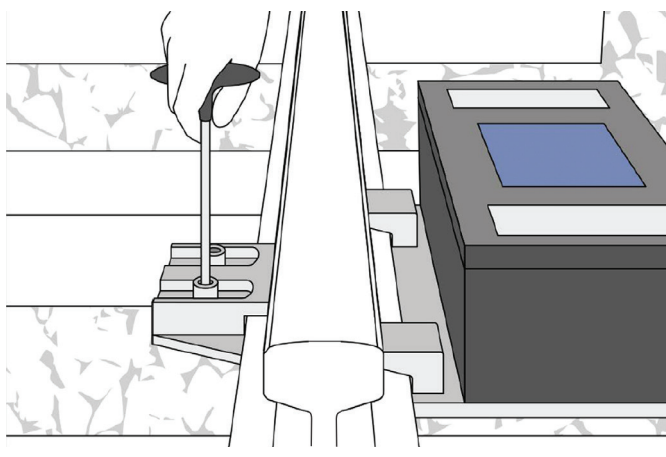
2. Create a small void in the ballast between sleepers and slide the Void Monitor under the rail.



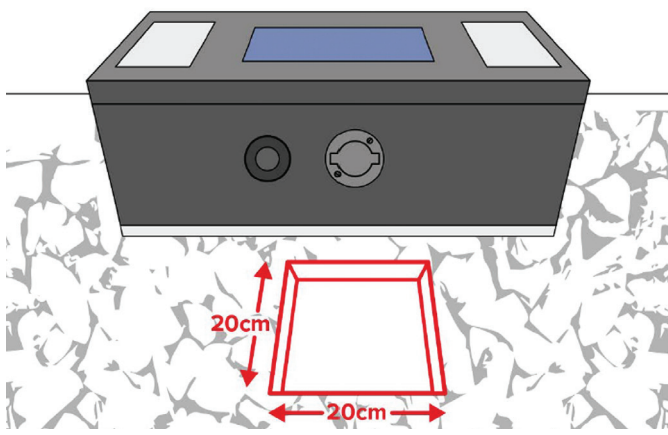
3. Ensure the Void Monitor base plate is flush under the rail. The shoulder should sit on the foot of the rail as shown.



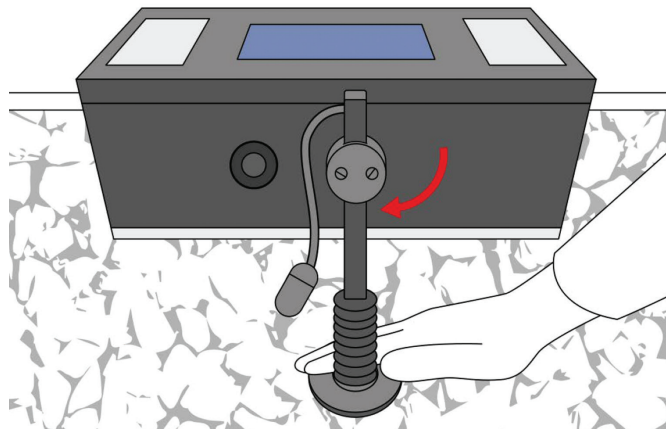
4. Slide end clamp over the foot of the rail.



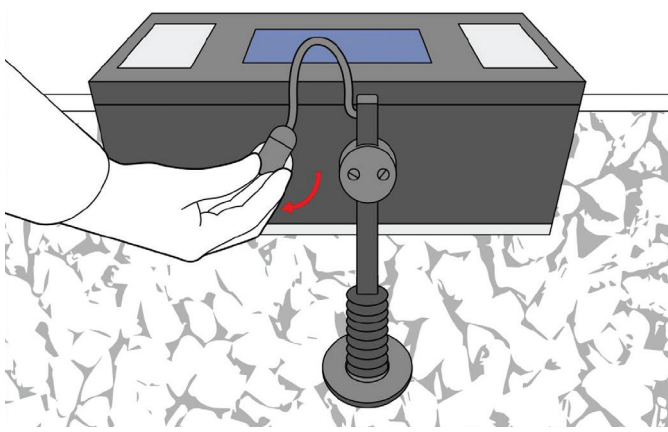
5. Tighten the bolts on the end clamp repeatedly and alternately using the M10 Allen key until secure.



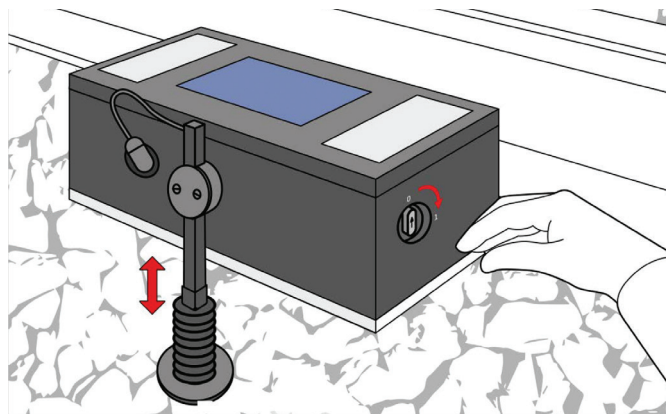
6. Once the unit has been secured to rail, remove an area of approx 20cm x 20cm in the ballast below the Void Monitor box.



7. Place sensor into the slot on the unit, push in and turn clockwise. The sensor should now stand vertical with the foot resting firmly on the ballast below.



8. Insert the sensor plug and twist it clockwise to establish connection.



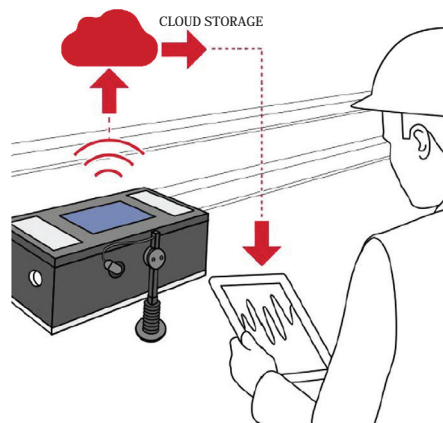
9. Once fitted, check sensor is moving freely with no ballast around it. To turn the unit on, turn on/off switch clockwise so the arrow points to '1'.

Call DYWIDAG
Customer
Support:
0161 765 3447

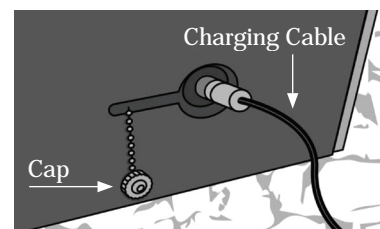
- ✓ Serial Number
- ✓ Company Name
- ✓ Site Location
- ✓ Alarm Limit
- ✓ Alarm Recipients



10. Call DYWIDAG Customer Support to ensure device is connected. Provide them with the information listed.



11. The Void Monitor will continuously stream information via Infrastructure Intelligence



12. Charging the Void Monitor

- 1 Remove Void Monitor from track.
2. Unscrew the cap at the bottom of the Void Monitor
3. Insert charging cable and charge for a minimum of 4 hours, ideally overnight.
4. Remove charging cable and ensure cap is screwed finger tight back onto the unit.

Removing the Void Monitor:

1. Switch off the Void Monitor.
2. Fully unscrew sensor plug.
3. Push sensor clamp into sensor socket and turn anti-clockwise to detach it from the unit.
4. Unscrew the bolts on the end clamp and remove Void Monitor from track.

www.dywidag.com



GET IN TOUCH

OUR HEAD OFFICE Datum House, The Pavilions, Bridge Hall Lane, Bury, Lancashire, BL9 7NX

CALL US
+44 161 797 5511

EMAIL US
info@dywidag-systems.com

FOLLOW US

[in](https://www.linkedin.com/company/dywidag) @DYWIDAG [f](https://www.facebook.com/DywidagSystems) @DywidagSystems