

# DYWIDAG Smart Anchor®

Anchor monitoring system

## Key Features

- Unique low profile force measurement sensor
- Monitor force distribution, inclination & water level
- Wireless modular system
- Email & SMS alerts
- Replaceable sensors
- Designed to align with the anchor lifespan

## Smart Product

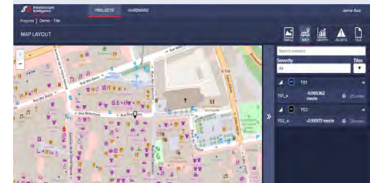
- Part of DYWIDAG Infrastructure Intelligence IoT ecosystem
- Plug & play automatic provision
- Easily manage from the cloud
- Built on Microsoft Azure technology
- Secure & scalable
- Intuitive grouping of anchor sensors
- Support for large scale sites

## Fields of Application

- Deep excavations
- Intra-urban construction
- Tiebacks
- Dam construction
- Rock and slope stabilization
- Positional stability



Image layout



Map layout



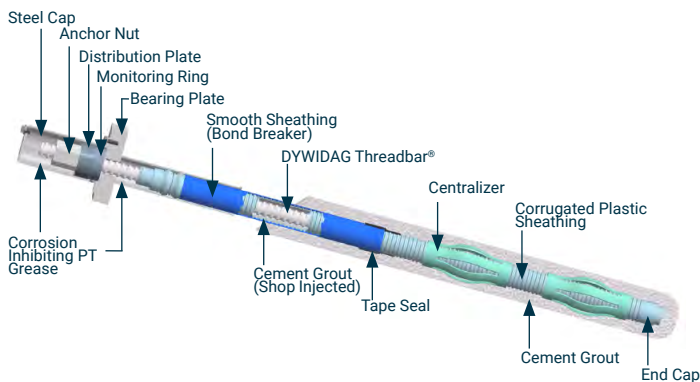
Depth chart & display readings





## Monitoring Solutions

Improve your company's reputation for innovation, using the latest monitoring and reporting technology. Focus resources where they have the greatest impact, through preventative maintenance & predictive technology, while using smart data to justify preventative maintenance and repair works.



## Smart Technology

**By using the latest technological advancements in sensor design, data capture and cloud based software. You will receive quantifiable, actionable information, in the right format, at the right time, for the right people.**

Identifying minor issues before they become major problems. This allows the focussed planning of resources, cost effective mitigation, all designed to prevent major incidents or business disruption.

### Key Benefits

- Real-time data analysis identifies minor issues, before they become major problems
- Fully automated data capture
- Get real-time alerts & alarms when conditions change
- DYWIDAG digital twin with streaming data and 2D/3D visualization capability
- Access supporting documentation, drawings, photos and reports in a single location
- Smart IoT ecosystem offers secure data collection and transmission to the cloud
- IoT architecture allows for expansion and inclusion of other monitoring devices
- DYWIDAG Smart Anchor® can be repaired insitu, without de-stressing the anchorage
- Life cycle gains – load cells or elastomagnetic repairs are not possible, and replacement requires the anchorage to be de-stressed