

The background of the slide is a photograph of the interior of Schiphol Airport. It shows a large, modern space with a high ceiling, green structural columns, and hanging string lights. In the foreground, there are blurred figures of people walking. Two large, illuminated advertising towers (lightboxes) are visible, displaying advertisements for DE GIRO. The right side of the slide is covered by a dark blue diagonal overlay containing the title and bullet points.

Schiphol Plaza Triangle Lightbox Package

SPTLP3

- Located in the heart of Schiphol, these spectacular advertising towers are in the middle of the passenger flow.
- They deliver high impact through their large format statement and colourful eye-catching advertisements.
- Schiphol Airport is one of the railway stations in the Netherlands with the largest number of passengers a day.

Schiphol

Facts

This giant triangular advertising mast is located on the left side in the heart of Schiphol Plaza. It stands out from the crowd due to its height, size and shape. This package delivers high impact through its combination of three large lightboxes.



At the beginning of every campaign, a set of pictures of proof will be made and shared. This is a free of charge service. However, when professional pictures are requested, an additional fee of €350,00 per campaign will be charged*.

* When a campaign consist of more than one kickoffs, whom cannot be photographed at the same day, this fee will be multiplied.

Schiphol Media
Schiphol Plaza Triangle Lightbox
Package



Product information

| | |
|---------------------------------|-----------------------------------|
| Number of faces | 3 |
| Rate | € 11500 |
| Booking period | Month |
| Size | 1x 565 x 182, 2x 410 x 184 |
| Object orientation | Landscape |
| Material | Valmex backlit FR (fire class M1) |
| Lighting | Fluorescent tubes 4000 Kelvin |
| Average reach in booking period | 3.239.000 |

Specifications

| | |
|---------------------------------------|----------------------------------|
| Format | High resolution PDF |
| Scale | 1:1 or 1:10 |
| DPI | Minimal 75 DPI on real size |
| Bleed | 10 mm |
| Additional requirements | Mark visual size with crop marks |
| Deliverytime before start of campaign | 10 working days |
| Upload artwork | artwork@schiphol.nl |

Questions?

Files, uploads or specifications: please don't hesitate to contact our traffic coordinator at +31 (0)6 3092 6198 or send an email to mediatraffic@schiphol.nl.

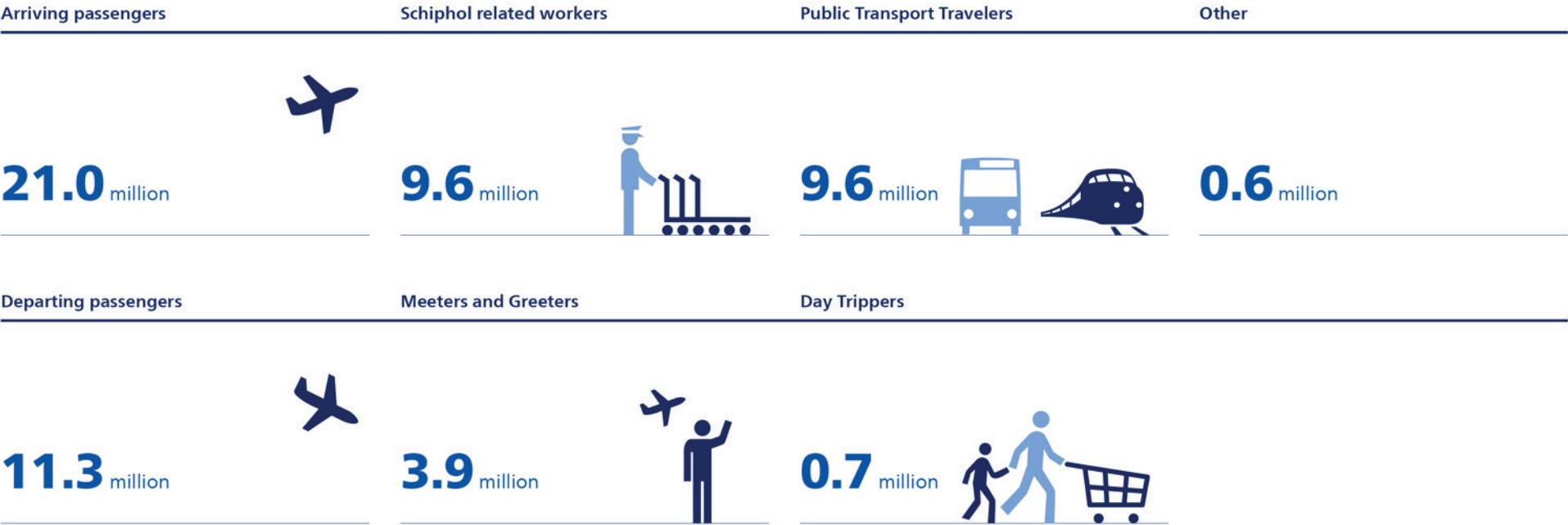
Your order or account: please contact your account manager, give us a call on +31 (0)20 601 2713 or send an email to advertising@schiphol.nl.

Facts & Figures

Schiphol Media
Schiphol Plaza Triangle Lightbox
Package



Schiphol Plaza



Source: Plaza profiel en gedrag 2015

Overview

Schiphol Media
Schiphol Plaza Triangle Lightbox
Package

