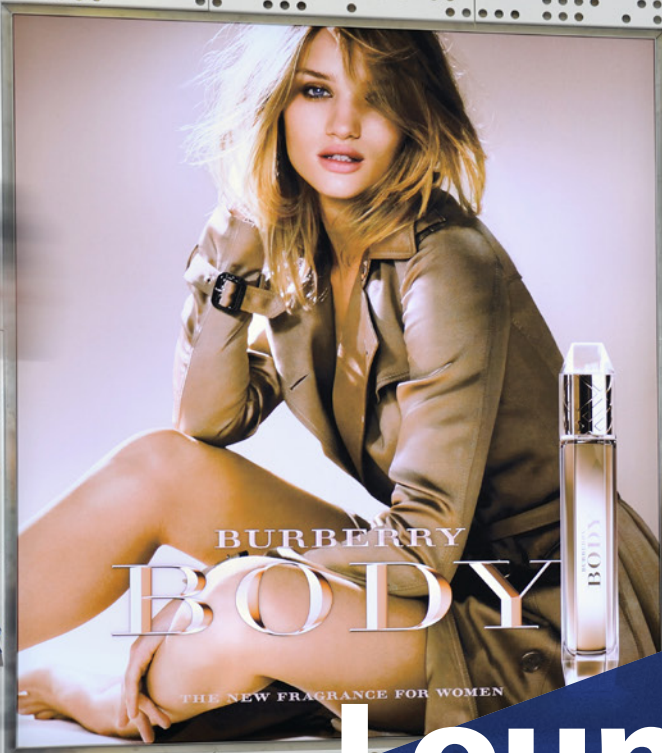


Accessorize

FASHION



Lounge 3 Portrait Travel Retail Lightbox

LO L3 1497

- Delivery in the heart of Lounge 3's upmarket and exceptional retail area.
- Acting as a purchase prompter when the affluent audience in this area have time to shop and are in a shopping state of mind.

Schiphol

Facts

This lightbox is positioned in the retail area in Lounge 3 and is located next to the entrance of the Accessorize store. It's specifically designed for point-of-sale messaging, enabling you to make the most of advertising at Schiphol itself.



At the beginning of every campaign, a set of pictures of proof will be made and shared. This is a free of charge service. However, when professional pictures are requested, an additional fee of €350,00 per campaign will be charged*.

* When a campaign consist of more than one kickoffs, whom cannot be photographed at the same day, this fee will be multiplied.

Schiphol Media
Lounge 3 Portrait Travel Retail
Lightbox



Questions?

Files, uploads or specifications: please don't hesitate to contact our traffic coordinator at +31 (0)6 3092 6198 or send an email to mediatrafic@schiphol.nl.
Your order or account: please contact your account manager, give us a call on +31 (0)20 601 2713 or send an email to advertising@schiphol.nl.

Product information

| | |
|---------------------------------|------------------|
| Number of faces | 1 |
| Rate | € 6,000 |
| Booking period | Month |
| Size | 2,320 x 2,680 mm |
| Object orientation | Portrait |
| Material | Dynajet L110 |
| Lighting | LED backlit |
| Average reach in booking period | 858,000 |

Specifications

| | |
|---------------------------------------|--------------------------------------------------------------|
| Format | High resolution PDF |
| Scale | 1:1 or 1:10 |
| DPI | Minimal 75 DPI on real size |
| Bleed | 10 mm |
| Additional requirements | Mark visual size with crop marks |
| Deliverytime before start of campaign | 10 working days |
| Upload artwork | artwork@schiphol.nl |

Facts & Figures

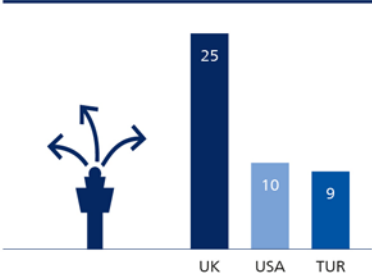
Schiphol Media
Lounge 3 Portrait Travel Retail
Lightbox



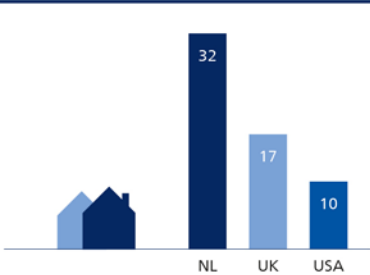
Lounge 3



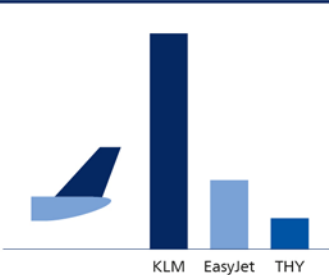
Top 3 destination countries in %



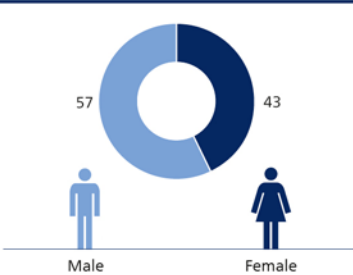
Top 3 countries of residence in %



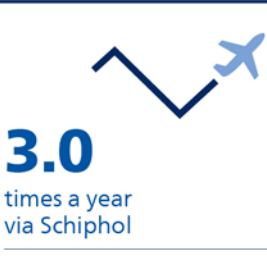
Top 3 airlines



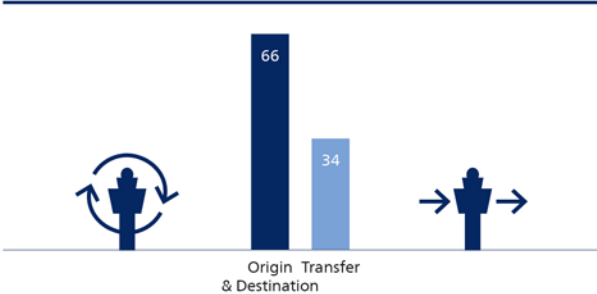
Gender in %



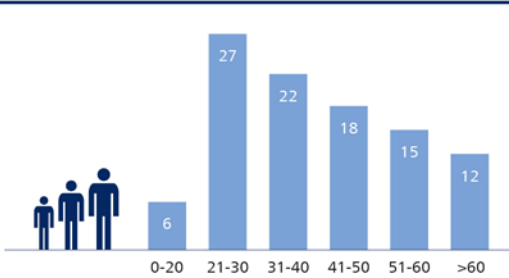
Frequency of flying



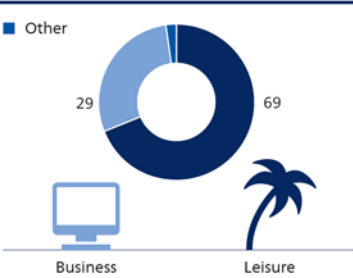
Type of passengers in %



Age in %



Reason for travel in %



2018 figures.



Lounge 3 - First level

Schiphol Media
Lounge 3 Portrait Travel Retail
Lightbox

