



Schiphol Plaza Landscape Package

PLP1

- Large format and high impact, these lightboxes are located in the walls of the shops in the main street at Plaza.
- Reaching a wide variety of visitors.
- Ideal for welcome (home) or point-of-sale messaging.

Schiphol

Facts

Large in format and high in impact, these two landscape lightboxes are located in the walls of the shops in the main street on Schiphol Plaza.



At the beginning of every campaign, a set of pictures of proof will be made and shared. This is a free of charge service. However, when professional pictures are requested, an additional fee of €350,00 per campaign will be charged*.

* When a campaign consist of more than one kickoffs, whom cannot be photographed at the same day, this fee will be multiplied.

Schiphol Media
Schiphol Plaza Landscape Package



Product information

Number of faces	2
Rate	€ 2500
Booking period	Month
Size	1693 x 1143 mm
Object orientation	Landscape
Material	Polyester Backlit Film
Lighting	Fluorescent tubes 4000 Kelvin
Average reach in booking period	1234000

Specifications

Format	High resolution PDF
Scale	1:1 or 1:10
DPI	Minimal 75 DPI on real size
Bleed	10 mm
Additional requirements	Mark visual size with crop marks
Deliverytime before start of campaign	10 working days
Upload artwork	artwork@schiphol.nl

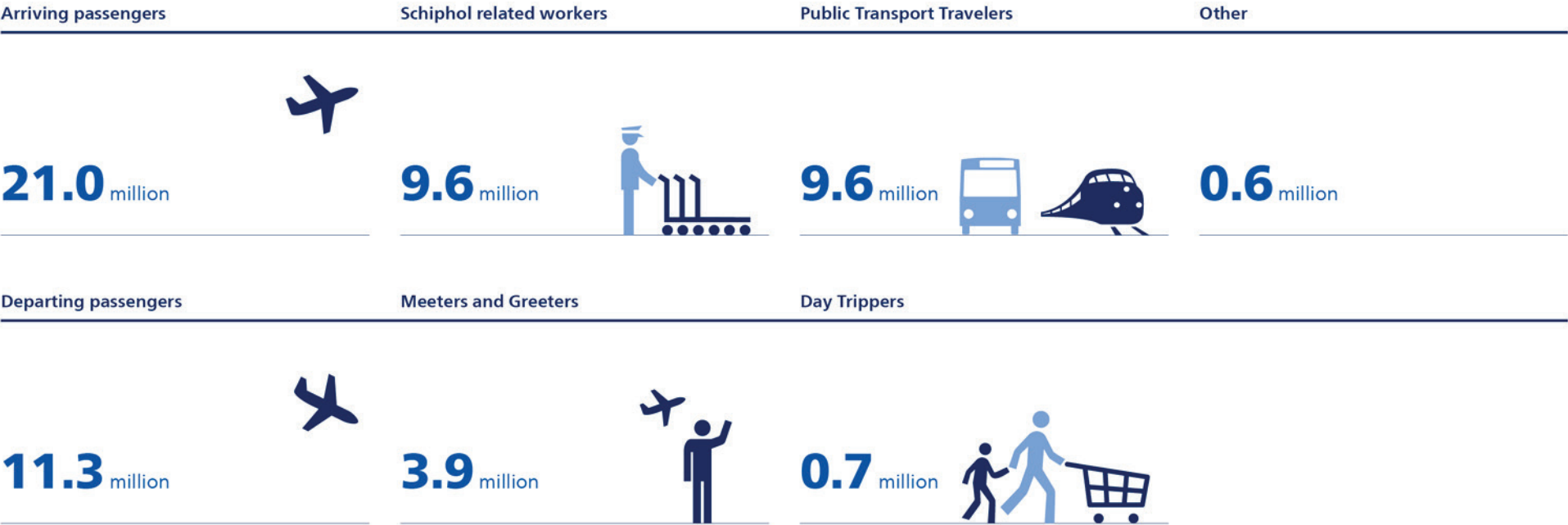
Questions?

Files, uploads or specifications: please don't hesitate to contact our traffic coordinator at +31 (0)6 3092 6198 or send an email to mediatraffic@schiphol.nl.

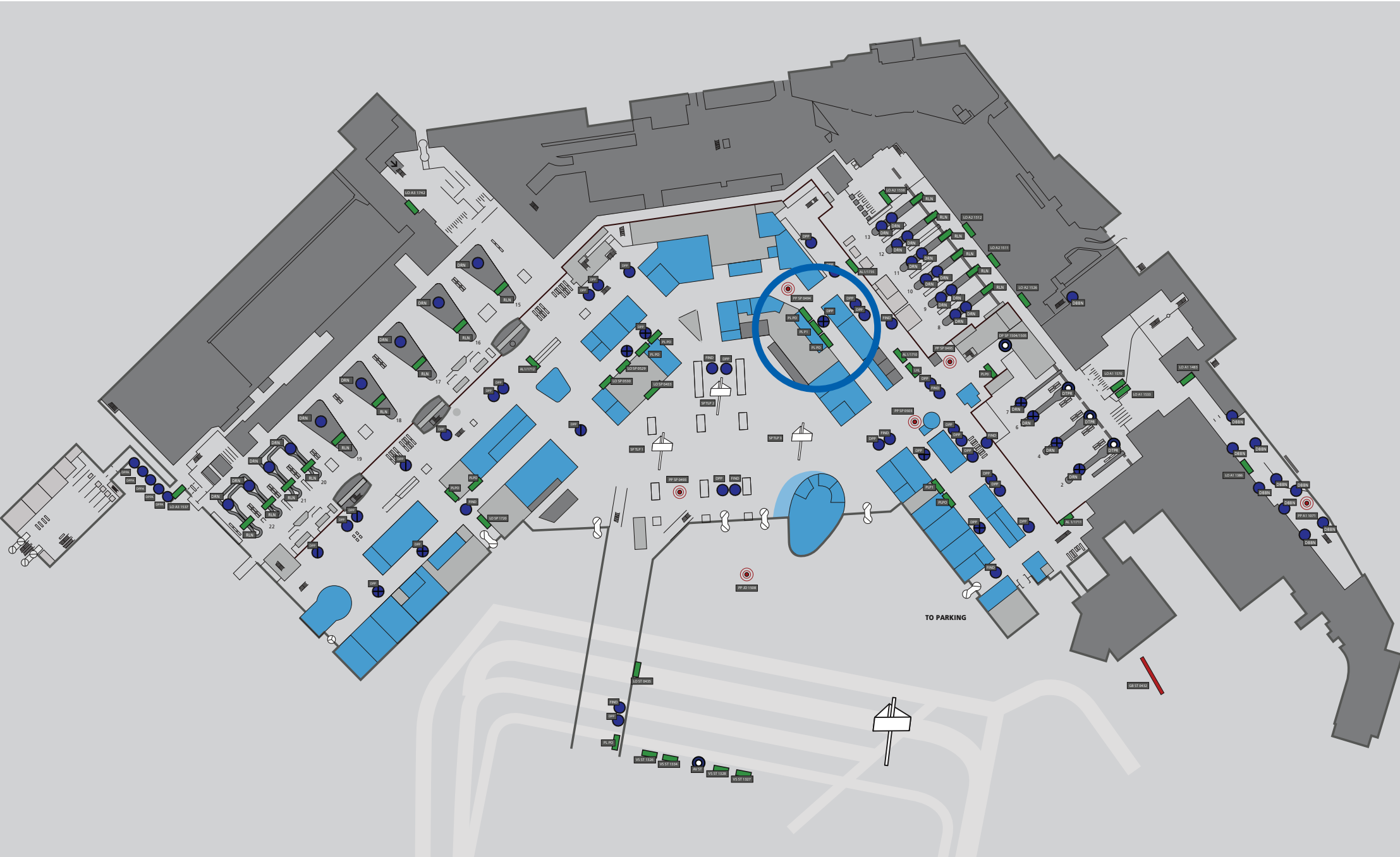
Your order or account: please contact your account manager, give us a call on +31 (0)20 601 2713 or send an email to advertising@schiphol.nl.



Schiphol Plaza



Source: Plaza profiel en gedrag 2015



Schiphol Plaza - First level

Schiphol Media
Schiphol Plaza Landscape Package

