



REPORT TO THE COMMUNITY



Science
Museum
of Minnesota®

JULY 2018-JUNE 2019



“

The museum is always buzzing with activity, always changing.

It's part of our ongoing journey toward making the museum a great place for people from every corner of our vibrant community to connect with science and each other as they explore and make memories together.

But now the undercurrent of that change feels different. It is different.

Last year we adopted our Statement on Equity and Inclusion, stating loudly and proudly that the museum is actively working to increase access to STEM and undo systems of inequity.

As we think about everything we do — and we do mean everything — through the lens of equity, we are both exhilarated by what we've accomplished, and humbled by the work ahead, which will require us to understand and break down often-invisible barriers so that we can be a truly inclusive organization.

Just as science is an unending process in which one discovery builds upon the last, so is our equity work. We are both student and teacher, searching for meaningful ways to connect and learn from each other so that we can best respond to community needs.

It's work that's never done, and that's okay.

The theme of this year's report is **Science + People = Impact**.

When we use an equity lens to think about **Science** more deeply, and **People** more broadly, the possible **Impact** of our work together is expanded exponentially. And that's truly exciting.

As we get ready to mark 20 years in our “new” building, we're reminded that the museum holds a special place in the hearts and minds of so many in our region. It's time we stopped creating barriers that prevent people from seeing themselves in science.

What a year it's been. Thank you for being part of this journey with us.

ALISON REMPEL BROWN, PRESIDENT & CEO
BRYAN PHILLIPS, CHAIR, BOARD OF TRUSTEES





SCIENCE + PEOPLE = IMPACT

More than **three million** people connected to the museum last year

People make science possible.

And by people, we don't mean "just" scientists (although they are vitally important). We need to connect to people who have not had access to science. When that happens, the possibilities are endless — and endlessly exciting.

This year the museum has been a jumping-off point for engagements across our state, our nation, and our world.

We bring **STEM** to students all across Minnesota

STEM (science, technology, engineering, and mathematics) unlocks countless opportunities for young people. Whether it's forging a path for a future career or building the confidence to be part of an informed and engaged society, it's critical that every young mind is exposed to STEM.

Science Museum educators have reached students in every one of Minnesota's **87 counties** for six consecutive years.

That happens easily enough for the 100,000+ students who visit the museum annually through field trips. But we know it's not always possible to hop on a bus and come to Saint Paul. That's why we send our outreach instructors out on the road. Last year, they visited 70,000 kids at 500 schools across our state, touching every one of Minnesota's 87 counties.

We take the **lead** on important issues facing our society

Last year we proudly debuted our Statement on Equity and Inclusion. Today those words are prominently displayed in our lobby, a visible reminder that we are actively working to increase STEM access and undo systems of inequality.

The museum logged **157,000** moments of equity engagement this year. We believe that science is for everyone, and we're putting that belief into action.


One way we're living that out is through the work of our newly created Access & Equity department. Partnering with the Saint Paul Public Housing Authority, we provided Great Tix discounts to all housing site residents and recruited seven residents to become new museum volunteers. These community members meet monthly with our Community Engagement Specialist, Erica Valliant, to develop ideas for new hands-on STEM events they will host at their housing sites.

We do global climate work right **here**

We take our role as a trusted source of scientific information seriously. That's why we were the first museum member of We Are Still In, a coalition determined to make good on the Paris Climate Agreement's promises. We were honored to lead the way in advancing awareness of these crucial climate issues.

The Museum's **electricity use** dropped for the 8th year in a row — even in the midst of our building renovation project!

Of course we educate about climate change — but we also lead by example. We've retrofitted the museum to dramatically cut our energy consumption. Thanks to two heat recovery chillers (which reuse excess heat energy) and solar panels, we've reduced our carbon dioxide output by *two million pounds annually*, cut our electric bill by \$315,000, and we created a model for other large facilities.

When people connect with science, it creates meaningful impact. Thank **you** for connecting with us. 

WE ARE STILL IN





RACE in Greater Minnesota

Small-scale versions gifted to three cities

Since its 2007 debut, the *RACE: Are We So Different?* exhibition has been seen by more than 4.5 million people in 54 museums, libraries, and community centers across the U.S.

Last year, it also was on display in Rochester's shopping mall.

That was the brainchild of the Rochester Advisory Council — and it's a terrific example of one of the many ways the *RACE* experience was personalized by the three cities in Greater Minnesota that received a smaller-scale version of the exhibition as a gift from the museum with support from the State of Minnesota's Arts and Cultural Heritage Fund and the Institute for Museum and Library Services.

Moorhead residents were invited to share stories of their families' migrations through a "Where I'm From" poetry workshop. Worthington youth journeyed to Saint Paul for a weekend of connection with young people from the museum's Kitty Andersen Youth Science Center, which even included catching a Jungle Theater show together.

In all, nearly 20 different programs — everything from using music to promote cultural understanding to dialogues,

workshops, and a book club — added depth to the *RACE* exhibitions in ways that were meaningful to the individual community, while providing a platform for the racial justice work taking place locally.

"We quickly realized how different all these communities are, and that a 'one-size-fits-all' approach wouldn't work," recalls Tony Williams, Science Museum Community Engagement Specialist. "We built authentic relationships that opened up two-way avenues for learning and collaboration. That meant we could support real equity work in these communities."

The impacts and possibilities of *RACE* continue to grow, as each city plans to share its small-scale version throughout the region. Exhibitions of *RACE* are planned for Northfield, Granite Falls, Pipestone, Owatonna, and Decorah, Iowa in the coming year.



Community members' efforts made this a very deep learning experience for everyone. They're the real **heroes**.

TONY WILLIAMS, COMMUNITY ENGAGEMENT SPECIALIST,
SCIENCE MUSEUM OF MINNESOTA

This activity is made possible by the voters of Minnesota through a grant from the Metropolitan Regional Arts Council, thanks to a legislative appropriation from the arts and cultural heritage fund.





Super-Sized Science

Our new paleontologist digs deep into our prehistoric past to predict the future



In his first year as the Science Museum's Fitzpatrick Chair of Paleontology, you could say that Dr. Alex Hastings is making a titan-sized impact.

After all, as a graduate student Dr. Hastings was part of the team that discovered the largest snake our planet has ever seen — *Titanoboa*, an anaconda-style predator longer than a school bus that squeezed its prey with so much force that bones crunched like dried leaves. Oh, and did we mention the rows of needle-sharp teeth?

Donning Justice League Converse high tops and a gleeful excitement over all things prehistoric, Dr. Hastings is bringing his contagious enthusiasm for science to Minnesotans.

Case in point: Dr. Hastings was the mastermind behind the museum's first-ever Dino Fest this summer. This one-day event gave visitors a chance to interact with fossils from the museum's collection, chat with real-life scientists, and meet modern-day birds and reptiles — including a silkie bantam chicken and a modern day alligator — that trace their lineage back to prehistoric times.

All of this ties to larger scientific insights about our planet, particularly climate change and the effects of rising global temperatures.

"There are plenty of times when the Earth was hotter than it is today, like the prehistoric period in which *Titanoboa* lived," explains Dr. Hastings. "Humanity may not have seen these kinds of temps before, but our planet has. By looking far into the past, we can gain new insights about how our planet will react to hotter temperatures, and even create models to help predict those impacts."

“

There's a huge appetite for interacting with science in our community. That energizes me to make paleontology as accessible as possible for as many different people as possible.

DR. ALEX HASTINGS



Giving The **Gift** Of Learning

“It’s an investment in the future of all children.”

Tim and Chris Etter have been supporting the Science Museum for so long, even they forget how many years they’ve been giving. (We checked, and it’s an eye-popping 19 years!)

The Twin Cities couple, who enjoy travel, downhill skiing, and doting on Wylie, their English Cocker Spaniel, started with a basic membership in 2000.

A behind-the-scenes museum tour inspired them to deepen their involvement. “We saw students learning high-level science in such a fun way, and it really struck a chord with us,” Chris recalls. “Then we heard about the buses the Science Museum sends to schools that can’t afford transportation and, well, the more we learned about the museum, the more impressed we were.”

With his father in the Air Force, Tim moved a lot as a child, while Chris never strayed far from her roots in Bayport, Minn. Both credit their modest upbringings with shaping their generosity. “We see from our own experience the impact science education can make — we need to inspire kids to be critical thinkers and problem solvers, and encourage them to keep moving forward in science,” Tim reflects.

“

**We see from our own
experience the **impact**
science education can
make. We want to open
kids up to learning and
encourage them to keep
moving forward.**

TIM AND CHRIS ETTER

The Etters are so committed to inspiring the next generation that they’ve included the museum in their estate planning. “It’s important to make a difference,” Tim notes as Chris adds “...and it makes us feel good to do something good for children.”





A Win-Win-Win Partnership

Visitors, HealthPartners, and the Science Museum benefit from collaboration

It doesn't take long to spot HealthPartners' logo at the Science Museum. The company has been a steady supporter of museum programs over the past decade, sponsoring visitor favorites like *Sportsology* and *Mental Health: Mind Matters*.

But what's less obvious are the layers and layers of behind-the-scenes collaboration between HealthPartners and museum exhibit developers.

Take *Sportsology*, for example.

The exhibition is filled with fun, hands-on activities all about the body in motion — just what you'd expect from a museum creation. But behind the science of scoring a goal, making a basket, or racing a *T. rex* are important messages about how to improve health. That's where HealthPartners



stepped in, lending their content experts in orthopedics, concussions, exercise, nutrition, and sports medicine to help create the exhibit.

The result? Museum visitors get serious health information in a playful, accessible manner.

"We know that 80 percent of a person's health comes from things outside the clinic," notes Donna Zimmerman, senior vice president, Government and Community Relations, HealthPartners. "So it's important for us to get health messages out in a different way."

With *Mental Health: Mind Matters*, HealthPartners and the museum again found their goals aligned. HealthPartners was launching "Make It OK," a campaign to encourage conversation about mental health, just as the Science Museum was developing an exhibition to deepen understanding and break down the stigmas around mental health.

Again, the two organizations came together in the spirit of co-creation. And again, the real winners are museum visitors who get access to high-quality information and resources in the approachable manner that is a hallmark of a museum visit.

"We're really good partners for each other," continues Zimmerman. We couldn't agree more.

From top: Exploring emotions through body language and facial expressions in Mental Health: Mind Matters. Measuring a high jump and racing in Sportsology.

“

The Science Museum has been a wonderful partner. We have a **shared** mission to improve lives through trusted relationships.

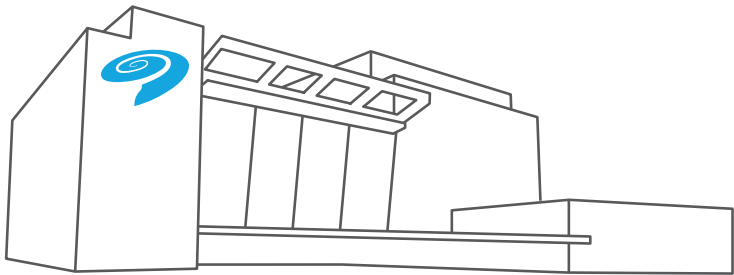
DONNA ZIMMERMAN,
HEALTHPARTNERS

A Year in Review

The Science Museum of Minnesota shared amazing experiences

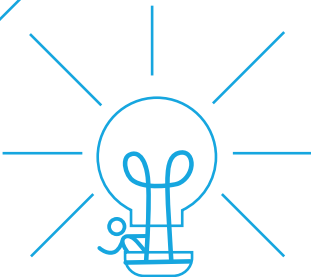
3,896,000 times

with the public, through our programs, exhibits, and films — onsite and online, nationally and internationally.



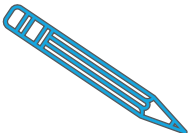
586

young people participated in a Kitty Andersen Youth Science Center program.



103,212 students

from around the region experienced a field trip to the Science Museum, including **26% of Minnesota Public Schools.**



Science Museum education programs reach **all 87 Minnesota counties.**

Year of the Engineer programs shared the power of engineering with

2.3 million people.

81,791

students, Members, families, and individuals participated in museum programming through our **Access programs.**

800 **volunteers** dedicated **59,032** service hours.



212 **corporate and foundation donors,** support the Science Museum, along with

27,416 **members and donors.**



The Science Museum of Minnesota is one of the **15 largest private employers** in downtown Saint Paul.

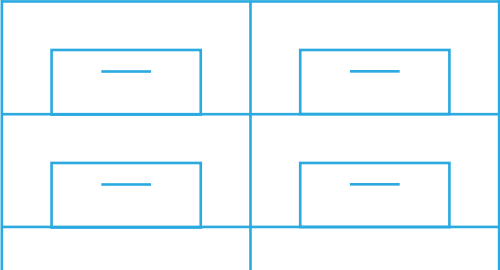
12,077

attendees enjoyed our **Science Fusion event series** celebrating African Americans, Latinx Americans, Native Americans, and Asian Americans in Science.



Nearly **11,000 people** participated in Science Museum programs in local communities.

Scientific researchers from **all over North America** used the museum's collections to further scientific discovery.



The RACE exhibit visited Worthington, Moorhead, and Rochester, engaging an estimated

3,000 people.

2,612 people toured the Science Museum's world-class collections, getting a glimpse at the **2 million objects** in the vault.

Annual Report Data FY19

STATEMENT OF FINANCIAL POSITION

Assets

Cash and cash equivalents	1,711,035
Accounts receivable, net	8,424,082
Other assets	1,062,753
Investments	47,761,539
Property and equipment, net.	84,810,359
Total Assets	143,769,768

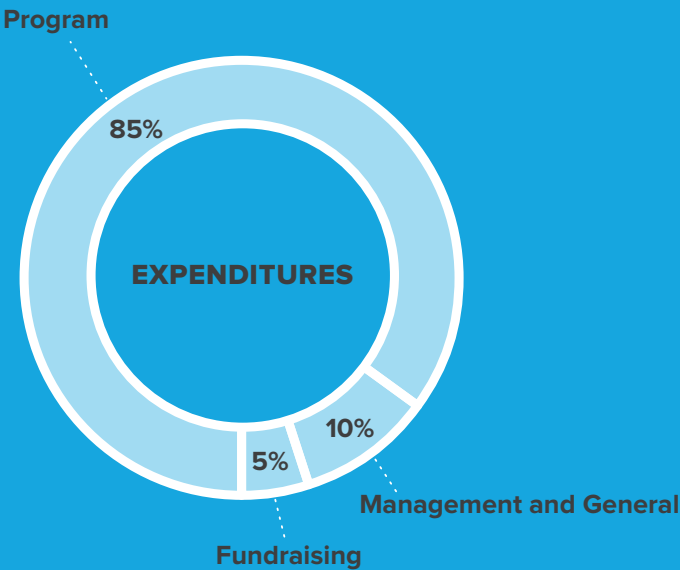
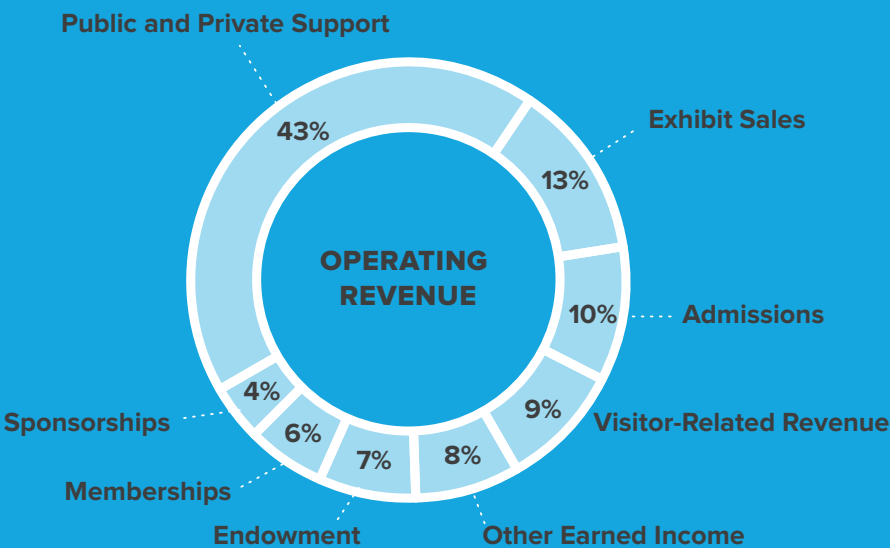
Liabilities and Net Assets

Liabilities

Accrued expenses.....	6,705,603
Deferred revenue	1,605,571
Debt.....	13,209,167
Total Liabilities	21,520,431

Net Assets

Without donor restrictions	84,932,704
With donor restrictions	37,316,723
Total Net Assets.....	122,249,427
Total Liabilities and Net Assets	143,769,768



Thank You to Our Contributors!

\$100,0000+

Anonymous
3M
Andersen Corporate Foundation
Roger Brown
The Cargill Foundation
Nicky Benz Carpenter*
Flint Hills Resources
Greater Twin Cities United Way
HealthPartners
John and Ruth Huss
Manitou Fund
Medtronic and Medtronic Communities
Foundation
Gilman and Margaret Ordway
Otto Bremer Trust
Target Foundation
U.S. Bank

\$99,999–50,000

Anonymous
Delta Air Lines
Donald Weesner Charitable Trust
The Donaldson Foundation



General Mills Foundation
H.B. Fuller Company Foundation
Horton Holding, Inc.
Hugh J. Andersen Foundation
Susan and Edwin McCarthy
Thomson Reuters

\$49,999–25,000

Anonymous
Avant Energy
Fred C. & Katherine B. Andersen Foundation
Katherine B. Andersen Fund of
The Saint Paul Foundation
Best Buy Co., Inc. and Best Buy Foundation
Patrick and Aimee Butler Family Foundation
Comcast NBCUniversal Foundation
Ecolab Foundation
Ms. Katherine Faltesek
Adele A. and Donald E. Garretson Family Fund
Otter Tail Power Company
Jean and Mark Schroepfer
Richard M. Schulze Family Foundation
Securian
Travelers Foundation
UnitedHealth Group
Winton Jones Foundation
Xcel Energy Foundation
Thomas and Julianne Youngren

\$24,999–10,000

The ARK Foundation
H. Brewster and Martha Atwater
Bank of America
Carol and Craig Beveroth
Bio-Techne Corporation
Catherine Marie Schmoker Family Foundation
City of St. Paul, Cultural STAR Program
Gretchen and John Corkrean

The Estee Lauder Companies Inc.
Charlotte Fitzpatrick Brown
Mr. and Mrs. William B. Frels
Art & Martha Kaemmer Fund of HRK Foundation
Morton and Merle Kane
Kinney Family Foundation
David and Sarah Lilja
MAHADH Fund of HRK Foundation
Marco Business Products
Margaret H. and James E. Kelley Foundation
Midwest Coca-Cola Bottling Company
William* and Gail Munsell
J.P. and Melissa Peltier
The Pentair Foundation
Piper Jaffray Foundation
Lollie Benz Plank
Polaris Industries Inc.
Jenni and Edwin Ryan
Allan and Deborah Schneider
Renee and Tim Skidmore
Evelyn T. Struthers*
VWR Foundation
Betty Wold Johnson
The Benno and Gertrude Wolff Family Fund of
The Saint Paul Foundation

\$9,999–5,000

Anonymous (2)
Andrews Allen*
Beckman Coulter
Ruth and John Bergerson
Ms. Alexandra Bjorklund*
Holly and Brad Boehne
Jason Bonfig
Alison Rempel Brown and Owen Brown
Buscher Foundation
Ron and Janet Christenson
Jane and Mark Chronister
CO2 Partners, LLC
John and Theresa Cosgriff
Carlson Family Foundation
Julia W. Dayton



Dr. Vanessa Dayton
Dellwood Foundation
The Dorsey & Whitney Foundation
Elizabeth Driscoll
Emerson
Susan Gabrys and Roger Shimada
Orville C. Hognander, Jr.
Dr. James and Peggy Hunter
J&B Group, home of No Name
Judith and Alan Johnston
Rick and Gina King
Melissa and Robert Leick
Rick and Marcia Lund
Stephen and Kathi Austin Mahle
Margaret Rivers Fund
Roger and Nancy McCabe Foundation
Richard and Joyce McFarland
Vanessa McGuire
George Muellner
Mutual of America
John and Marla Ordway
Dr. Frederick J. Palensky and Mrs. Barbara
J. Palensky
Pie Consulting & Engineering
Diane and George Power
Steve and Barbara Proeschel
Richard and Shirley DeLeo Fund of
The Saint Paul Foundation

**Deceased*

Sandra Roe
Schwegman, Lundberg & Woessner, P.A.
Jim and Yvonne Sexton Family Foundation
Gary and Nanci Smaby
Surmodics, Inc.
TCF Foundation
Terhuly Foundation
Tides Center
Pam Tomczik and Nicole Ericksen
Verizon Foundation
Theresa and Jim Wise
WSB & Associates, Inc.

\$4,999–2,500

Anonymous (8)
Steven and Beverly Aanenson
Alex Stern Family Foundation
Gloria and M. George Allen
Ken Allen
American Public Works Association
Suzanne Ammerman
Sarah J. Andersen
Mary Anne Anderson
James and Debra Arneson
Jerry L. Artz
Josephine and Gordon Bailey
Mark Baird and Janis Maercklein Baird
Baker Tilly Virchow Krause, LLP



Mr. John Banovetz Ph.D.
Gay and Ron Baukol
North Risk Partners
Bemis Company Foundation
Marcy and Randy Betcher
Kari and Cody Blotske
Colleen P. Brandel
Priscilla Brewster
Bill and Gail Bynum
Dr. Wenlan Cheng and Dr. Peter Lee
City Engineers Association Of Minnesota
Yvonne Condell
Darryl Cuddy and Kristin Ruble
Charles and Kathryn Cunningham
Mark Dahlager and Laura Melnick
Judson and Shelley Dayton
Roy Dika
Jack and Kirsten Driscoll
Wally Ebertz and Kathryn Schoenberg-Ebertz
Dondi and Daphne Edwards
Eric and Lisa Engh
Timothy and Christine Etter
Faegre Baker Daniels LLP
Tony and Janelle Fisher
Jimmy and Juliette Francis
Joan and James Gardner
Donald and Patricia Garofalo
TerryL and David Gilberstadt
Barry and Sarah Gisser
Geoffrey Glasrud and Petra Lodder
Duane Gorder
Jon and Anne Gotte
Thomas and Sharon Hedrick
Louis F. and Kathrine E. Hill
Judith and Walter Hinck
Bill and Christy Jonason
Joanne Jones-Rizzi and Diane Willow
Anne Joseph and Philip McGlave
Keith and Karen Kaestner
Paul and Carey Kasbohm
KPMG LLP
Charles Kummeth and Angela Dillow

Land O'Lakes Foundation
Mary LaRock
Mimi and Dean Larson
Thomas and Bridget Lee
Jack and Joan LeGare-Hansen
Allen and Kathy Lenzmeier
Jean R. Ljungkull
Enrique and Renee Lopez-Pineda
McGough Construction Company
McKinsey & Company, Inc.
Christopher and Kristine McMahon
H. G. McNeely, Jr.
McVay Foundation
Michael Merrick
Microsoft Corporation
Nancy Middleton
Douglas and Sandra Milroy
Sid Munson and Maralyn Weihe
Joan and Richard Newmark
Robert M. Olafson
Audrey and David Olsen
Nushka Fund- Phil and Cassy Ordway
Pavilion Advisory Group, Inc.
Michael and Luann Pendy
Arlene Peterson
Alicia and Bryan Phillips
Phyllis S. Poehler/Walter E. Stremel
Charitable Trust
Nick and Judy Priadka
PricewaterhouseCoopers
Kristin Rasmussen
Peter and Mary Rhode
Kevin and Amy Ronneberg
Benno and Marlys Gapstur Sand
A. William and Susan Sands
Lisa and Jay Schlosser
The Schmidt Family
Ms. Catherine Simpson
Sit Investment Associates Foundation
Star Tribune
Ruth Ann Stricker
Jean Taylor and Roger Griffith



Grizelda and Robert Taylor
The Tennant Foundation
Michelle and Matt Thalman
Judy and Daniel Titcomb
Virginia Turba
Ulteig Engineers, Inc.
Ultimate Software Group, Inc.
Jill and Matt Walker
Andrea and Tim Walsh
Stuart* and Mary Weitzman
Colleen and Keith Wietecki

\$2,499–1,000

Anonymous (17)
Chady and Mireille AlAhmar
American Society of Civil Engineers Minnesota
Ameriprise Financial
Ms. Linda Amrein
Owen Anderson
Quentin and Mary* Anderson
David and Debra Andreas
Pete and Margie Ankeny Fund
Bailey Nurseries Foundation
Ginger and Walt Bailey
Lynda and Stephen Bany
Kathryn and Tom Barnett
Barr Engineering Company
James Beardsley

**Deceased*

Ellen and Michael Bendel-Stenzel
Arthur Bergstrom
Lyle and Carol Bradley
Roger and Ronnie Brooks
Ellis Bullock
BWBR Architects
Thomas and Mary Campbell
Scott Carnahan
Chi-Yi Chou
Heather Christianson
Alex and Judy Cirillo
Richard W. and Jean Illsley Clarke
Lydia Crawford and Phil Davies
Ellie Crosby
John and Eva Cross
Charles Denny*
Ariel Dickerman
Sara and Jock Donaldson
Edward and Jo Anne Driscoll
Joan Duddingston
David and Lucille Edlund
Gary and Sue Ellis
Federated Insurance
Mr. and Mrs. Litton Field, Jr.
Amy and Randall Fish
Beth and Justin Fletcher
Leslie and David Gardner
Lowell and Leticia Gillette



Cindi and Harold Goldfine
Sara K. Graffunder*
Karen and Gary Gray
Cate Grinney and Stephen Hunter
Jill and Dan Gustafson
Patricia Haddad
Rebecca Haddad and Ziad Amra
Elizabeth and Brad Hamilton
Heidi Hardner and Bill Humphrey
Margherita Gale Harris
Thane and Blanche Hawkins
Martha Head
Karel and Mike Helgeson
Lowell and Cay Shea Hellervik
Rodney and Susan Heuer
Randy and Teresa Hillson
Elizabeth and Edwin Hlavka
Diane and Tony Hofstede
Bill Holecek and Luana Marrier Holecek
Holiday Inn St. Paul Downtown
William and Linda Holley
Kenneth and Linda Holmen
IBM Foundation
Sandra A. Johnson
Ward and Charlotte Johnson
Janet N. Jones
Lucy Rosenberry Jones
William and Nancy Jones
Charles and Mary Jungmann
The Julia Kaemmer Fund of the HRK Foundation
Kate Kelly
Greg and Gail Kenton
Rosemary Kessler
Jeffrey and Debra Kohen
Drs. Robert Kriel and Linda Krach
Constance and Daniel Kunin
James and Gail LaFave
Lakeland Companies
Richard and Sally Leider
Laurence and Jean Lejeune
George M. Logan
Richard and Juanita Luis

Bill Lurton
Memorial to the Karl & Hilda Sophia Magnuson
Family Farm, Tanglewood
Rhoda and Don Mains
Dusty Mairs
Kathy and Tom Malaske
Carol Malnati and Dwight Degiacomo
Frederick and Helen Markwardt
Jeanne and Jack Matlock
MaryAnne and John Mauriel
Marilee and Garwin McNeilus
Christi Melendez
Mendon F. Schutt Family Fund of
The Minneapolis Foundation
Robert and Judith Meuleman
Darryl and Jo Meyer
Joseph and Jane Micallef
Michael C. and Robin M. Miller
Greg Mizer
Jerry and Jane Mlinar
Peter and Michelle Nagel
Nagios Enterprises, LLC
Barbara and Raleigh Nelson
Erik and Karen Nelson
Jennifer and Pete Newburg
The Nicholson Family Foundation
Ford and Catherine Nicholson
Richard and Nancy Nicholson
Micah and Nikki Niermann
David and Billie Novy
Timothy and Gayle Ober
D. William O'Brien and Julie Smendzuik-O'Brien
Mark Olien
Deborah Olson
OneBeacon Insurance Group, Ltd.
Bart and Kandi Osborn
C. Thomas Osthoff
Amy S. Owen
Kori and Michael Parish
Pamela Hermann and Daniel Polglaze
Irene Qualters
Ms. Anne Queenan



Tom and Mary Kay Racette
Amy Radermacher and David Ratz
James and Donna Radford
Mr. Douglas Raney
Jane Richards
Jerry and Joanne Robertson
Jim and Sheren Rogne
Dr. David A. and Kathleen S. Rothenberger
Pat Rozman
Thomas Rumreich and Ruth Ronning
Juliana Kaufman Rupert
Denise Rutherford and Maurice Kuypers
Jane and Thomas Ryan
Mr. John Saffert
Melissa and Jason Sanders
Nancy DeSchane and Dean Sather
Jason Schreiber
Daniel and Donna Scott
Marion Scott
Stephen and Mary Seidlitz
Jon and Jennifer Severson
Anne Simpson
Helene and Jeff Slocum

Spatz Family Partnership
John M. Stanoch
Erik and Pamela Stegman
Jeanne and Rupert Strobel
Surlly Brewing Co.
Mary Anne and Terry Swor
Ron and Margaret Tabar
Dr. Gerald W. and Susan E. Timm
Sandra Tokach
Up Down Minneapolis
Kathryn and Martin Urberg
Wayne and Katherine Vagts
Dr. Ann and Mr. David Wasson
Wells Fargo Foundation Minnesota
Maria and Michael Westfall
Ted and Nancy Weyerhaeuser
Doug and Diane Wild
Wiley
Robert and Jeanette Williams
Jane and James Wiltz
Frederick and Eleanor Winston
The WMN Foundation
Margaret VB Wurtele
Tamara Young
Eric Zilley
Larry and Victoria Zobel
Todd and Martha Nicholson Fund of the
 Nicholson Family Foundation

\$999–500

Anonymous (27)
Alice and Arthur Aamodt
Eugenie Allen Family
Allina Foundation
Jim and Amy Almendinger
Richard and Sarah Amos
Deloris A. Anderson
Gregory and Janice Aplin
Roger H. Appeldorn
Drew and Laurie Arnold
Frederick D. Arny, M.D.
Associated Benefits and Risk Consulting

Susan and David Austin
Daniel Austing and Stephanie Orfei
Diana J. Barber
Joel and Susan Barker
Robert Barton
Diane Beckmann
Bryce & Fay Behrens
Rev. Audrey and Andrew Benjamin
Pamela and Bruce Bennett
Diane and David Berrien
Katy and Aj Bertelson
Jodi Billy and William Van Dyke
Michael and Helen Bird
Elizabeth Bixby
Mary E. Bloom
Lois E. Bohon
Sarah and Peter Borgen
Mitchell Brabec and Rebecca Roland
Larry and Virginia Bradford
Gail and Steve Brand
Caroline and Bryan Byrd
Christopher and Talia Campbell
John and Mary Jo Carlson
Pete and Laura Carpenter
Mary and Wayne Carter
Cecil and Penny Chally
Ruey-Yun Chern and Chiu Ping Wong
Amber Clutter and Matthew Holger
Caroline Cochran and Tim Christopherson
Al Colling
Morgan Conley
Catherine Connett
Jay and Page Cowles
David and Kitty Crosby
Gretchen and Robert Crosby
Scott and Sue Cummings
Daniel Dahm
Edward and Pamela D’avignon
Kathy Davis
Edward and Sherry Ann Dayton
Chris and Heather Demko
Steve and Terry Dondlinger

Ernest and Mary Dorn
Jay Dornfeld
Arthur and Diane Dunn
Mark and Tori Dupre
Karen Durant
Heidi and Dean Emanuel
Thomas and Sharon Engels
Richard and Lisa Ernst
Titus and Carol Evans
Deann Everson and Doug Opheim
Lyle and Jane Fahning
Craig Feathers and Amy Kolan
Ms. Bernadine Feldman
Richard M. and Beverly Wexler Fink
Mike and Linda Fiterman Family Foundation
James and Stephanie Fox
Teresa and Pat Fraher
James and Joyce Gay
Todd and Abby Geders
Jerome and Beth Geis
Teddy and James Gesell
Robert Glass and Marsha Kimble
Robert and Phyllis Goff
Brianna and Johnathan Gohde
John Goodfellow and Kirsten Vadheim
Richard and Marsha Gould
Joseph and Sylvia Graba
Madeline Gragg and Zafar Khan
Joseph and Sarah Green
Susan and Peter Gross
Dorothea F. Gumbrill
Roger Hale and Nor Hall
David and Catherine Hanson
Samantha and Colin Hanson
Scott Hanson
Steven Harmer
Robert L. Harms Family
Ingrid and Alfred Harrison
Richard and Patricia Hart
Mr. Jerry Hartlaub
Robert and Justine Haselow
Sue and Jason Haus



Roger and Marge Heegaard
Jim Henk and Kathy Donovan
Anne Pantelich and Douglas Hepper
Hewlett Packard
Carrie and Richard Higgins
Wil and Myra Hirsch
Joel and June Hoffa
Mark and Jean Hoffman
Dan and Emily Hoisington
Randall and Julie Holmes
Steven Holmgren and Margaret
 Browning Holmgren
Stan and Jane Hooper
Kate and Rob Huebsch
Larry and Frances Hum
Eric Hunt and Colleen Rivard Hunt
Joseph and Sarah Imholte
Lucy Imholte
Ms. Cheryl Indehar
Barbara and Jim Joers
Fritz and Sharon Johnson
Joel Johnson and Tara Uppman
Roger N. Johnson
Charles and Kathryn Joseph
Joel T. Juelich
Ronald and Jane Kalin
Michael and Kristi Kampmeyer
Andrew and Virginia Kass



Kenneth H. Keller and Bonita F. Sindelir
Martin and Esther Kellogg
Dr. Byong Moon Kim and Kyung Hyang Park
Kwonshik and Sungsook Kim
George and Julie Kinney, Jr.
John Knoedler and Maureen Kane
Jerry and Nancy Knoth
David and Susan Kroska
Maureen Kucera-Walsh and Michael Walsh
Larry and Carolyn Kuechle
Tom and Teresa LaBounty
Don and Joann Leavenworth
James Leibold and Nancy Cameron
Joe Lenartz
Steve and Judy Lewis
Dick and Peggy Lidstad
Willard and Nancy Lines
William and Patricia Litchy
Calvin and Christine Litsey
S.K. and Sing Lo
Kara Kersteter and Erik Long
Dana R. Lonn
David and Angela Lura
Dale and Linda Lutz
Michael Luxenberg and Joan Garfield
Connie MacRostie and Rebecca Miniscalco
Helmut and Mary Maier
Helen and Bob Mairs

Edward G. Maranda
Megha and Saugar Maripuri
Paul Lafferty
David and Staci Mattson
Gary May
Drs. Loring and Lucy McAllister
Peter McCloud and Amy Irvin
Andrea and Larry McGough Charitable Fund
Genevieve McSpaden
Jacob Medford
Jerry Meigs
Sharon Meyer and Rodney Massey
Stan and Susanne Meyer
Cindi and Hannah Miller
Ms. Elizabeth Miller
Kathryn and Terrence Miller
Minnesota Street Superintendents Association
Minnesota Surveyors and Engineers Society
David K. Misemer and Florence Sprague
Kathryn Mitchell and Terry Brueck
Charles and Kathleen Moen
Jim and Carol Moller
Helen and Scott Moser
William P. Muldoon
Craig and Joanie Murphy
Judy and Ted Nagel
Pamela Nagorske and Family
National Checking Company, Inc.
Amy and Jeff Nelson
Bruce Nelson and Barbara Watts
John and Janet Nelson
Cynthia Novak-Krebs and Kate Fairman
Mary and Gary O'Brien
Marta Ochoa
Tom and PJ Olander
Peter and Bonnie Olin
Darryle and Dawn Owens
David and Valerie Pace
Padilla
Parallel Theory LLC
Missy and Willard Patty
Roger and Karen Pavlis

Daniel and Nancy Pedersen
Lisa and Gary Pederson
Timothy M. and Patricia C. Peterson
Eugene L. Piccolo
PNC Bank
Mark Poulson
Peter and Linda Quinn
Richard and Lois Quinn
John Reay
Frank Rekuski and Kerri Shaughnessy
Nancy and Kevin Rhein
John Riehle
David Ristuben and Leisa Meeuwen-Ristuben
David A. Robinson
Karen and Margaret Rose
Craig and Mildred Rotzoll
Barbara Roy
Erik Ruggles and Kelly Mayo
Mrs. Dorothy Sanford
Jim and Georgie Saumweber
Bette Schmit
Jeffrey and Patricia Schott
Paul and Sherrill Schottler
Amy Seidel
Katie and Kevin Sevcik
Rossy Shaller
Frank and Lynda Sharbrough
Raymond Shields and Opal Richards
Dr. Byron H. Simmons
Craig and Barbara Skone
Patrick Hagan and Brenda Smeby
Ann and Conrad Smith
Kendall and Debra Smith
Mrs. Pam Solstad
Sarah Soong
Katherine Sophia and Brian Hayden
SRF Consulting Group Inc.
Jodie Starch
Maureen Steinwall and Mike Lavelle
Elizabeth and Eric Stephan
Robert and Celia Stretmater
John and Sandra Ann Sutter

Sarah Wilson Sweatt
Eric Tennesen and Sarah Kolar
Jay and Mary Kay Thacker
Tyrone and Kit Thayer
Trudy and Dan Thompson
Thrivent Financial
Brad Tischendorf
Jack Tokpa and Gormah Mulbah
Ms. Robin Tost
David Tronson
Marie and Jon Tuhy
John and Jennifer Urbanski
Carroll and Michele Vance
James and Virginia Vandervest
Kevin Veenstra
Michael Vekich
Victory Parking, Inc.
Jim and Cheryl Viera
Yan Vinnik
Michael and Stacy Walters
George and Lara Wandling
John and Gracy Waugh
Dee Weaver
Melvin Weiss
Eric and Jody Wetterlind
Annette and John Whaley
Mr. Robert Williams
Jennifer Willner and Brendan Bennett
Kent and Ann Wilson
Thomas and Estelle Winiecki
Wayne and Mary Lou Wolsey
Todd and Kyoko Zaun
Zero-Max

Gifts received between July 1, 2018 – June 30, 2019.

Gifts in Honor of

Elizabeth Bennett	Mike Day
Alison Rempel Brown	Ron Lawrenz
Benjamin and Margit Coltvet	Robert Milstein

In-Kind Gifts

3M Foundation	SavATree
Craig and Carol Beveroth	Metro Transit
Mr. Lewis Des Chaine	Minnesota Vikings
Ariel Dickerman	Mike Zacher
Jessica Franken	

Gifts in Memory of

Donald G. Aronson	Helen Josephson
Randall L. Erickson	Madeleine MacIndoe
Lincoln Harris	Francis Joy Rathmann
Edward R. Hondlik	Calvin Ziegler
Arnold T. Johnson	Douglas G. Raney

Government Grants Received FY19

State of Minnesota

BUDGET APPROPRIATION: Unrestricted Operating Support

ARTS & CULTURAL HERITAGE FUND: Support of the museum’s Statewide School Initiative and for *RACE: Are We So Different* exhibits and programming in Greater Minnesota

LEGISLATIVE-CITIZEN COMMISSION ON MINNESOTA RESOURCES: Funding to St. Croix Watershed Research Station to research the topic: Mapping Unprofitable Cropland for Water and Wildlife

City of Saint Paul

CULTURAL STAR: To support equipment for Illumination

Institute of Museum and Library Services

PROFESSIONAL DEVELOPMENT & CAPACITY BUILDING: Building institutional capacity to gather, analyze, and use data across the organization

National Science Foundation Advancing Informal STEM Learning Program

CARDBOARD: Building more inclusive museum makerspaces to support informal engineering learning experiences

Fibonacci Society Members, 2018–2019

The Fibonacci Society proudly recognizes donors who have chosen the Science Museum of Minnesota as a part of their legacy.

Anonymous (10)	John G. and	John and Marla Ordway
Andrews Allen*	Alice L. Harrison*	Lisa Peterson
Jerry L. Artz	Elfrieda Hintze	Louise Benz Plank
Gay and Ron Baukol	Orville C. Hognander, Jr.	Robey Price
Arthur Bergstrom	John M. and Bonnie K. Holub	John H. Roe, III* and
Ms. Barbara Brosious	Ron and Cathy Huber	Sandra B. Roe
Charlotte Fitzpatrick Brown	John and Ruth Huss	Thomas Rumreich, DDS, MA
Ms. Florence L Buggert	Lester C. Krogh, Ph.D.*	and Ruth Ronning
Ms. Nadia Christensen	and Joan M. Krogh	Thomas E. Ryan
Charles Denny*	David and Sarah Lilja	Allan and Deborah Schneider
Lori L. Dietrich and	Richard and Juanita Luis	Sarah Olson Scovill
Steven J. Piazza	J. Keith* and Barbara	Ted Shabert
George* and Ann Doty	MacKenzie	Martha and Bill Simms
Tim and Chris Etter	Tom and Kathy Malaske	William and Renate Sperber
Joan and James Gardner	Sid Munson	John M. Stanoch
Scott and Lisa Jean Getty	Bruce Nelson and Barbara	Steve and Jyneen Thatcher
Leticia Hernandez Gillette	Watts	Bernie and Jan Wagnild
and Lowell Gillette	Joan and Richard Newmark	Mr. and Mrs. Donald Weesner*
Ms. Sara K. Graffunder*	Fred* and Marvel Norton	Mary and Stuart* Weitzman

Leadership Team

- Alison Rempel Brown, President and CEO
- Mark Dahlager, Vice President of Museum Experiences
- Juliette Francis, Vice President of People and Museum Culture
- Barry Gisser, Chief Financial Officer
- Joanne Jones-Rizzi, Vice President of Science, Equity, and Education
- Mimi Daly Larson, Vice President of Mission Advancement

Board of Trustees 2019 Calendar Year

OFFICERS	AFFILIATION
Bryan K. Phillips — Chair	Surmodics, Inc.
Holly M. Boehne — Secretary	Andersen Corporation (retired CTO)
Jill Walker — Treasurer	PricewaterhouseCoopers LLP
Alison Rempel Brown — ex-officio	President and CEO, Science Museum of Minnesota

TRUSTEES	
Chady AlAhmar,	U.S. Bank Wealth Management
John Banovetz, Ph.D.,	3M
Melvin W. Carter III,	Mayor of Saint Paul
John Corkrean,	H.B. Fuller Company
John W. Cosgriff,	UnitedHealthcare
Rassoul Dastmozd, Ph.D.,	Saint Paul College
Dondi Edwards,	Wells Fargo
Eric Engh, .	Ryan Companies US, Inc.
Tony Fisher,	K1 Sportswear
Geoff Glasrud,	Flint Hills Resources
Anne Gotte,	Ecolab
Mitch Helgersen,	Minnesota Wild
Jessica Hellmann, Ph.D.,	University of Minnesota – Institute on the Environment
William A. Jonason, Past Chair,	Dorsey & Whitney LLP
Paul J. Kasbohm,	StarTribune
Chuck Kummeth,	Bio-Techne
Melissa Leick,	Cargill
J.P. Peltier,	Piper Jaffray
Luann M. Pandy,	Medtronic
Renee Lopez-Pineda,	Delta Air Lines
Kevin Ronneberg, M.D.,	HealthPartners
Lisa Schlosser,	Thomson Reuters (retired CTO)
Catherine Simpson,	Bank of America
Tim Skidmore,	CHS, Inc.
Jennifer Spaulding-Schmidt,	McKinsey & Company
Pam Tomczik,	Target Corporation
Jill Walker,	PricewaterhouseCoopers LLP

Premier Partners



Premier Partners make it possible for the Science Museum of Minnesota to shape the next generation of science learners. Thank you for being our partners!

Science Museum *of* Minnesota®

120 W. Kellogg Blvd., Saint Paul, MN 55102 / smm.org / (651) 221-9444

©2020 Science Museum of Minnesota