

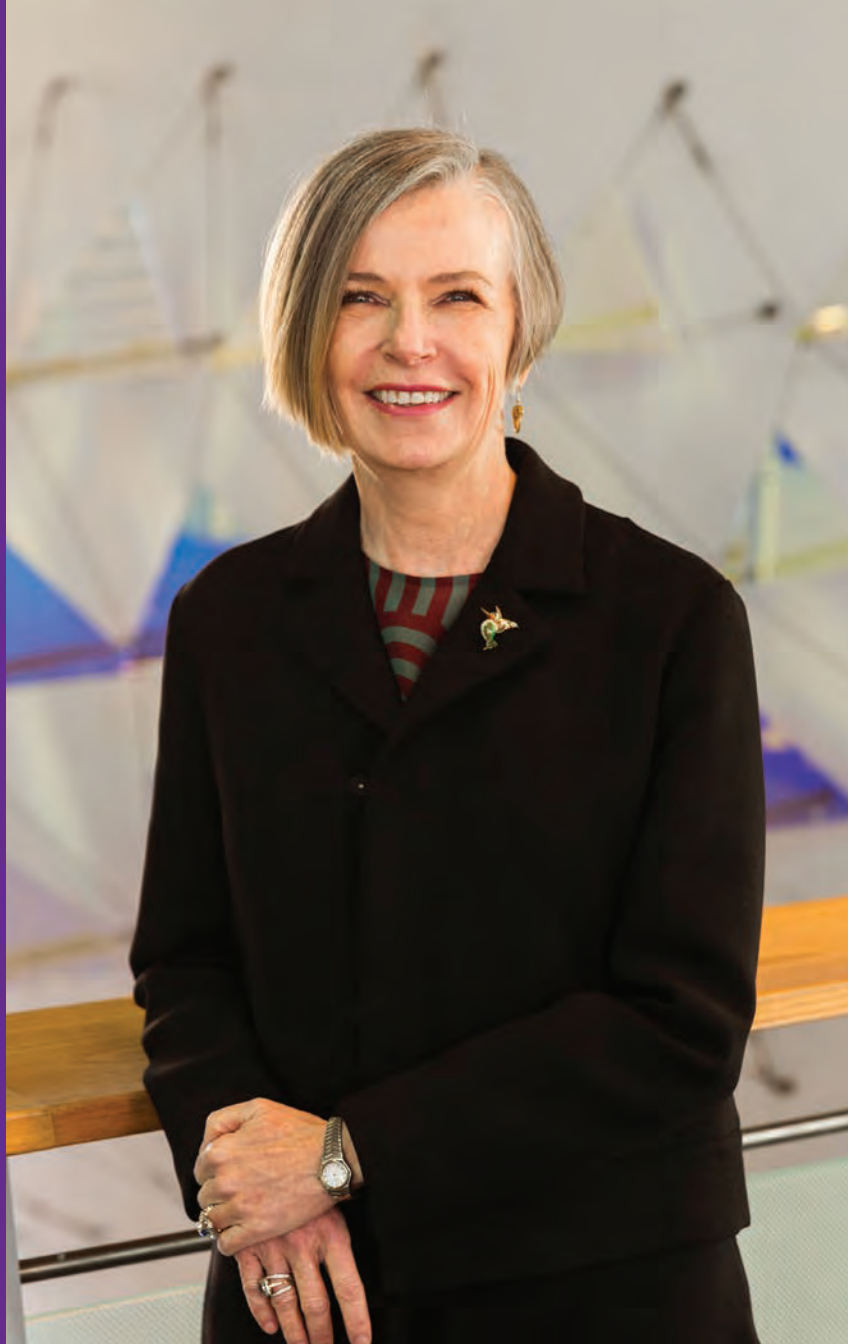


2016-2017

# ANNUAL REPORT



Science  
Museum  
of Minnesota®



Dear Friends,

On a sunny day in April, I joined my colleagues and thousands of Minnesota families at the Kids Climate Rally on Kellogg Plaza. We came together because we know that science is critical to our nation's future. We made signs supporting science, listened to inspiring stories from community members and young people from our Kitty Andersen Youth Science Center, danced, and celebrated the possibilities that science provides for each of us. Then, we departed the museum as a group and joined up with Minnesota's March for Science. I was proud to represent the Science Museum at an event with such energy, enthusiasm, and hope for the future. We added our voice on the importance of science literacy in civic and economic engagement.

The March for Science festivities were among my favorite of this past year. They represent our commitment to be bold during a time of uncertainty in our nation. Today, science is more politicized than ever, making our work even more important. With your help, we engage curious minds, helping them see that they are the critically needed scientists of tomorrow.

---

We must show our young people - especially girls and youth of color - that they can succeed in STEM careers. We need every mind engaged in solving our world's issues and addressing our workforce needs.

Inspiring curiosity and sharing the potential of science is at the heart of all we do. Our school programs reached students in all 87 counties of Minnesota. Students learned to use science to decode the past, engineer solutions to real-world problems, and build a sustainable future. Our growing access programs opened our museum experiences to families and individuals in whom we have historically under-invested, inviting people of all ages to envision their futures in science. Our ongoing research on watershed issues makes us a valued participant in an international dialogue about this beautiful, all-encompassing, and increasingly threatened resource.

After a 2017 bright with success and possibility, we move forward together with a renewed pledge to share our mission of science and education. Through the work that we do in our exhibit halls, our labs, our classrooms, and our outreach efforts, we will show our growing audiences that scientific progress strengthens our world by improving lives and building a better community – and that we all play a role. We do this because science is essential. Thank you for your support.

With gratitude,

A handwritten signature in black ink, reading "Alison Brown". The signature is fluid and cursive, with a long, sweeping underline that extends to the right.

Alison Rempel Brown









# SPORTS SCIENCE

## comes to life at the museum

Maybe you're a marathoner who enjoys scenic training runs around metro area lakes, or your passion lies on the court during weekend pick-up basketball games. Maybe you have an appreciation for classical ballet, or you've spent hours in the stands at Target Field, cheering for the Twins. Whether you're a high performance athlete or a champion spectator, you're in possession of a body in motion. The Science Museum invited you to discover more about it in 2017 with the premiere of the *Sportsology* exhibit.

Presented by HealthPartners and TRIA, *Sportsology* represents the first major renovation to the museum's resident exhibit galleries since the opening of the riverfront facility in 1999. Covering nearly 6,000 square feet, the exhibit touches on a wide range of topics – from balance and hand-eye coordination to reaction time and nutrition for optimal performance.

The best part? *Sportsology* draws on the expertise of some of Minnesota's most respected professional athletes, giving visitors the chance to compare their jump shots to Lynx guard Lindsay Whalen's or challenge Paralympian Mark Braun to a race.

*Sportsology* is a perfect example of the Science Museum's efforts to show visitors that science is an equalizing force. We all rely on our bodies to meet the physical demands of everyday life. Whether we're high-performance professional athletes who make a living in intense competition or simply people who exercise for fun and good health, we all benefit from gaining a better understanding of what makes our bodies work. In *Sportsology*, visitors of all ages are doing just that – and having a lot of fun at the same time.

Presented by HealthPartners and TRIA, *Sportsology* represents the first major renovation to the museum's resident exhibit galleries since the opening of the riverfront facility in 1999.



HealthPartners®



TRIA®

# *HIDDEN FIGURES* revealed in movie theaters – and at Science Fusion

The annual African Americans in Science event features the best and brightest scientists of color from the Twin Cities community. African Americans in Science has become a meaningful Science Museum tradition that helps kids see themselves in science careers.

Over its history, this tradition has grown into a museum-wide effort that draws thousands of visitors and features dozens of science professionals from around the state. Out of African Americans in Science rose the month-long Science Fusion event series, which devotes four Saturday afternoons to celebrating scientists from diverse backgrounds. Science Fusion events, presented by Donaldson Company, welcomed more than 15,000 visitors this year.

The 2017 African Americans in Science event featured its traditional presenter appreciation brunch, student awards, afternoon science fair-style event, and live music that visitors love. The program's 25th anniversary also included a timely local science connection: Macalester College's Dr. Duchess Harris, author of *Hidden Human Computers: The Black Women of NASA*.

Harris spoke to event attendees, telling the story of her grandmother, Mariam D. Mann, and a group of her colleagues who provided crucial engineering and critical thinking skills to the early years of NASA's space flight program. Her story is also at the center of the critically-acclaimed *Hidden Figures* film, which opened nationwide just days before the event. Harris' appearance blended science, history, and cultural cache to mark the quarter century milestone of a program that shows visitors of all ages and backgrounds that we all have the potential to be scientists who change the world for the better.







Macalester College's  
Dr. Duchess Harris,  
author of ***Hidden  
Human Computers:  
The Black Women  
of NASA.***



# REACHING STUDENTS

## in every Minnesota county

Inspiring the next generation of scientists isn't something that we can do alone – we can do more when we work together. That's why partnerships with educators and schools are so important in equipping Minnesota kids with the tools they'll need to succeed in a STEM-rich workforce.

In 2017, Science Museum education programs reached students in all 87 counties in Minnesota for the fourth year in a row. Some of those students visited the museum on a school field trip, experiencing a giant-sized science lesson that they'll remember for years to come. Field trip packages that include Science Live programs and educator guides with pre- and post-field trip activities help educators connect their field trip with state academic standards, making the most of their time.

Other students experienced the Science Museum at their school – either at a large-group assembly or through an in-depth residency on topics like engineering, water, electricity, and dinosaurs. Outreach programs like these put the Science Museum's tools and expertise right in Minnesota's classrooms and auditoriums, giving museum access to students who might not have the opportunity to visit Saint Paul.

It's safe to say that this year, Science Museum programs went to the state's furthest reaches. An instructor even visited a one-room schoolhouse in Angle Inlet, a tiny community in the northwest angle of Lake of the Woods County. To reach the school, the instructor had to cross through a small portion of Manitoba. For the students, the experience was well worth their instructor's long journey. An Outreach instructor will return again next year. Sounds like the makings of a north woods science tradition!

There's a whole lot of water on Earth!  
Students in a Science Museum Outreach  
program about water explored exactly  
how much (in gallons).





In 2017, Science Museum education programs  
reached students in all **87 counties** in Minnesota.



# A GIANT SCREEN FILM touched a giant heart with giant goals

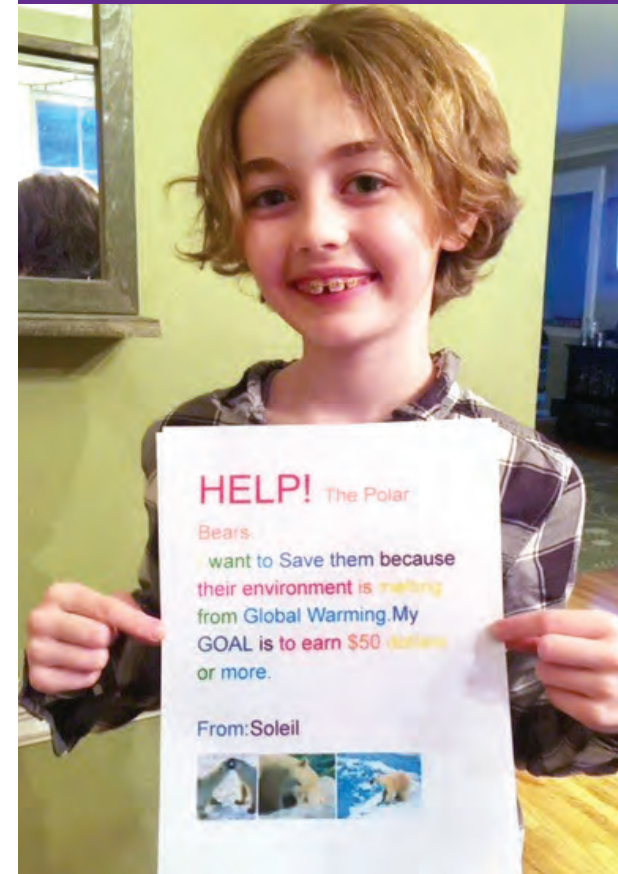
For nearly two decades, movie lovers have looked forward to Omnifest, an annual film festival that showcases the Omnitheater's giant screen capabilities. Each year, the festival features classic films brought back by visitor demand, as well as brand new features that use the giant screen format in breathtaking and unforgettable ways.

Omnifest 2017, presented by U.S. Bank, featured *To the Arctic*, a giant screen film that showed viewers the impact of climate change on the wildlife of the far north. Soleil, a nine-year-old Omnitheater fan and Science Museum member who visited with her family during Omnifest, was captivated by the film and inspired by the story it told. She was so inspired, in fact, that the film prompted her to rally to raise funds for polar bear habitat protection efforts.

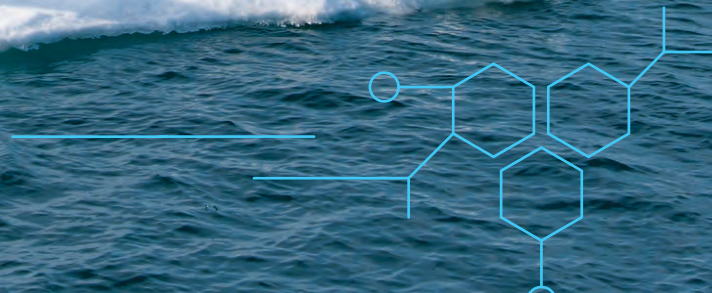
All on her own, Soleil dreamed up a fundraising campaign, complete with bilingual flyers that she distributed at her language immersion school in Saint Paul. Moved by *To the Arctic*, Soleil encouraged her classmates and teachers to learn more about the plight of the polar bear and, more importantly, to *take action* for a better future.

"Maybe her earnings will go nowhere beyond the 'good luck dollar' I kicked her donation box off with," said Soleil's dad, Mark, in an email to the Science Museum, "but just as important is that she is standing up and trying to act for something she finds important."

Moved by *To the Arctic*,  
**Soleil encouraged her  
classmates and teachers  
to learn more about the  
plight of the polar bear.**











The *Triceratops* was discovered by emeritus paleontologist **Bruce Erickson** in the Hell Creek Formation in Montana in the early 1960s.





## A BELOVED dinosaur's new digs

Level 3 saw some extensive renovations this year to make way for the *Sportsology* exhibit. One visitor favorite that found a new home within the galleries was the famous *Triceratops*. Discovered by emeritus paleontologist Bruce Erickson in the Hell Creek Formation in Montana during the early years of his career, the *Triceratops* has been one of the most treasured pieces of the paleontology collection since the early 1960s.

To move the prized specimen to its new location in the Dinosaurs and Fossils Gallery, the Science Museum's crew needed patience (start to finish, the move took several months!), meticulous attention to detail, and about 900 friends who donated nearly \$60,000 to support the effort.

It's not every day that a dinosaur moves, and the Science Museum treated summer visitors to a science process story that they won't soon forget. They watched staff prepare the new space, carefully disassemble the specimen, painstakingly move it, and reassemble it in its new home. Once the project was complete and the *Triceratops* was settled into its new digs, it welcomed visitors to its new location at a homecoming party unlike any other.



# YOUNG PEOPLE

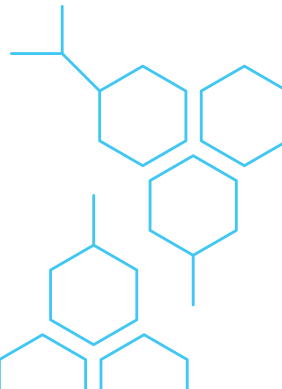
## leading the way for a better future

A crown jewel of the Science Museum's education and outreach efforts, the Kitty Andersen Youth Science Center gives young people the tools and opportunities to use STEM to help solve social justice issues they're facing in their communities here in Minnesota and around the world. The work they do is innovative and inspiring – and it's getting noticed.

This year, the KAYSC was named Community Organization of the Year by Greater Twin Cities United Way at their annual Night to Unite event.

It also received the Ramsey County Public Health award, which recognizes groups that have made exceptional contributions to improving health in Ramsey County, for its Bits to Bites Crew's efforts to use technology to create solutions to food injustice and promote healthy lifestyles, along with many other leadership and advocacy projects.

Congratulations to the KAYSC for putting its leadership skills, collaboration efforts, and advocacy to work to make our community a better and more equitable place to live.





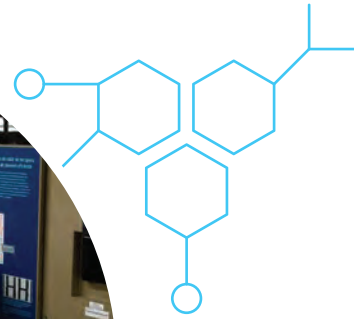
# AN ENERGY STORY

## heard round the world

The Science Museum's advanced heat recovery system, which captures and reuses heat energy rather than discarding it, was a significant investment that promised to reduce our overall energy bills by nearly \$300,000 a year. That's quite a savings for a building that operates year-round in Minnesota's often extreme climate.

The results are in, and the initial investment has paid for itself. Thanks to the greening of other museum energy sources (solar power now provides 26% of the museum's energy needs), the Science Museum has cut its contributions to carbon dioxide pollution by more than 30 percent in just four years.

Patrick Hamilton, the museum's Director of Global Change Initiatives, takes every opportunity to share our sustainability story with audiences of all kinds – from museum volunteers and Minnesota Public Radio listeners to Ignite Minneapolis attendees and even delegates at international climate conferences. Ours is an ongoing success story that bears repeating – and replicating – by individuals and businesses around the globe.



The Science Museum's **award-winning** advanced heat recovery system is saving the museum **\$300,000 a year** on its utility bills and cutting carbon pollution by two million pounds annually.





# CURIE SOCIETY CELEBRATES

## with an astronaut, a Pixar scientist, and more

Members of the Science Museum's Curie Society get the opportunity to make personal connections with STEM professionals who have unique perspectives on current science issues.

This past year, Curie Society members saw a performance by Cantus in conjunction with Code + Chords, a project of the University of St. Thomas' Playful Learning Lab, and founder AnnMarie Thomas. Thomas and her students are finding inventive play-based teaching techniques to engage kids in science learning. Curie Society members also got the first look at *Sportsology*, meeting experts from HealthPartners and TRIA who lent their expertise to the exhibit, as well hometown hero Joe Mauer. They saw a screening of *A Beautiful Planet* and heard about life on board the International Space Station from NASA astronaut Butch Wilmore. They attended a panel discussion with leaders in environmental innovation from around the Twin Cities. They toured the bog and participated in bird banding at Warner Nature Center. They enjoyed the Curie Society Walk and Talk series, which gave them an in-depth look at the *Weighing the Evidence* exhibit and a peek into the future of the Paleontology Hall. And they rounded out the year at the preview event for *The Science Behind Pixar*, where Pixar scientist Tony DeRose shared his efforts to inspire the next generation of storytellers to study computer science, engineering, animation, and design.

Thanks for a great year, Curie Society members. The Science Museum is grateful for your generous support.



*Tour of the Lee and Rose  
Warner Nature Center.*



*The Science Behind Pixar VIP Preview*



*Sportsology Opening Event*



*Code + Chords Event*



# DOING OUR PART

## to create the workforce of tomorrow



### Traveling exhibits and films

1.2 million visitors saw Science Museum-produced traveling exhibits at venues across the country, and 1.8 million people saw our giant screen films at theaters around the world.



### Kitty Andersen Youth Science Center

337 young people participated in Kitty Andersen Youth Science Center programs, developing and delivering programming and reaching 12,455 people in their outreach work.



### Summer Camps

35 instructors and 58 program staff worked together to offer 197 summer camps to nearly 320 campers per week on topics ranging from animation to engineering to veterinary science.



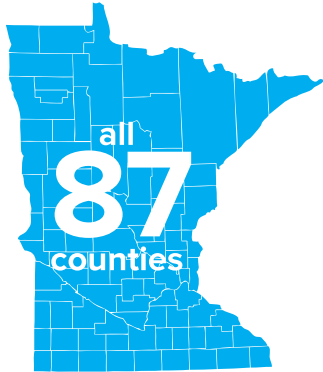
### Field trips and school outreach programs

162,267 students experienced Science Museum programs during the school day, either on a field trip or through a program at their schools.



**801,030**  
people served

Science Museum  
education programs  
reached students in



851 active volunteers  
contributed

**60,702**  
hours of service.



► **22,625** ◀  
guests attended a rental  
event at the Science Museum.

**9,492**

educators and professionals  
attended professional  
development programs or  
visited the Science House  
Lending Library



Through its waste reduction  
efforts and the greening  
of its energy sources, the  
Science Museum has  
**cut its contributions to  
carbon dioxide pollution by**

over  
**30%**

In just three years.

This year Science  
Live Theatre delivered

**2,760**  
performances with a  
total attendance of  
**208,180**  
visitors.



Total museum attendance  
during Science Fusion:

► **15,277** ◀

Nearly **6,800** people  
attended FY17's five  
Social Science events.



**9,492**

adult learners  
participated in  
classes through the

**Computer  
Education  
Center.**

**79,425 visits**  
to the museum through  
access programs, nearly  
**5,000**  
more than previous year

St. Croix Watershed  
Research Station  
opened its doors to  
**906 visitors**  
and visiting researchers.

Warner Nature Center  
celebrated its



Since its inception, volunteers  
at Warner have banded  
49,695 birds for research.



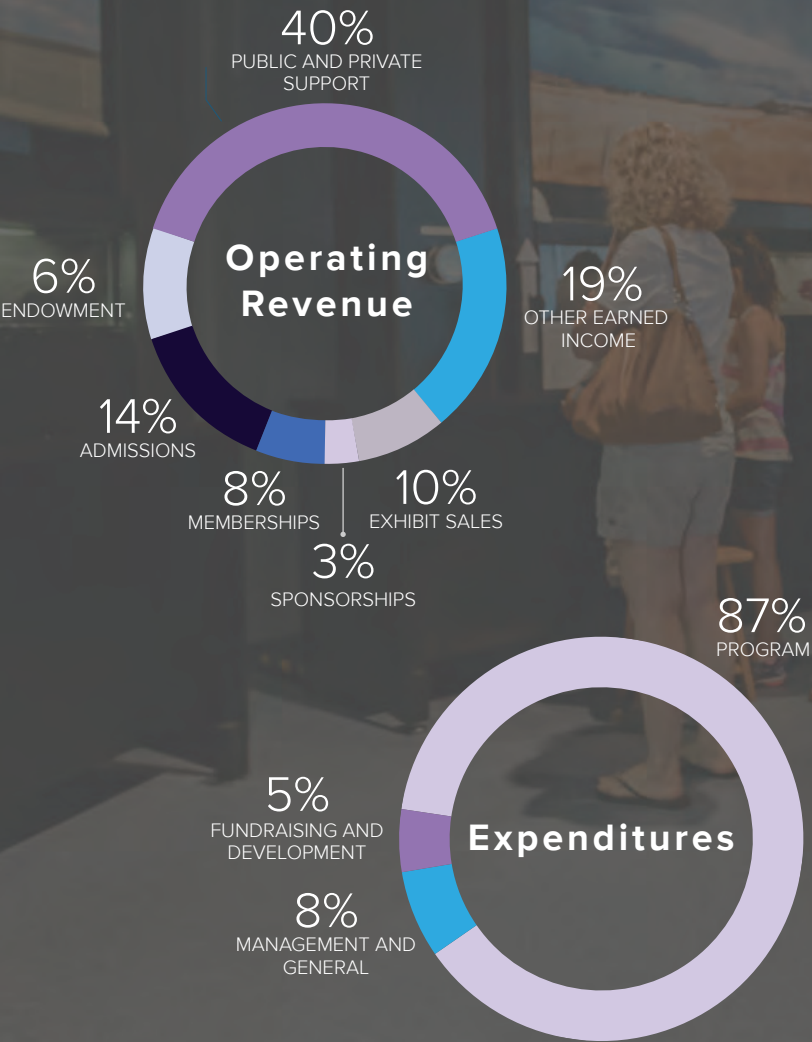
The *Science Behind Pixar*  
gave **119,849 visitors**  
a glimpse at the wide variety  
of STEM jobs at work in their  
favorite animated films.

► **31,703** ◀

Active Memberships of the  
Science Museum of Minnesota



# FINANCIAL STATEMENTS





# STATEMENTS of Financial Position



## ASSETS

Cash and cash equivalents	\$6,513,666
Accounts receivable, net	\$4,890,971
Other assets	\$726,983
Investments	\$43,673,778
Property and equipment, net	\$81,189,288

**TOTAL ASSETS** **\$136,994,686**

## LIABILITIES AND NET ASSETS

### LIABILITIES

Accrued expenses	\$3,417,004
Deferred revenue	\$1,945,755
Debt	\$16,343,817

**TOTAL LIABILITIES** **\$21,706,576**

## LIABILITIES AND NET ASSETS

### NET ASSETS

Unrestricted	
Undesignated	\$2,888,069
Designated—board designated	
Endowment and donor restricted	\$15,175,501
Designated—other (net assets)	\$5,014,346
Property and equipment	\$59,406,406
Total unrestricted	\$82,466,322
Temporarily restricted	\$14,413,893
Permanently restricted	\$18,407,895

**TOTAL NET ASSETS** **\$115,288,110**

**TOTAL LIABILITIES & NET ASSETS** **\$136,994,686**

As of June 30, 2017



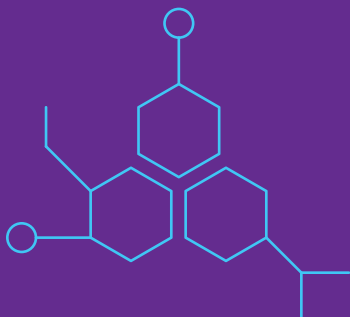
Audited financial reports are available upon request at: [smm.org/annualreport](http://smm.org/annualreport)

# THANK YOU

## Premier Partners

Premier Partners make it possible for the Science Museum to shape the next generation of scientists.

Together, we build a strong foundation for developing curious minds that will solve tomorrow's biggest challenges. Thank you for standing behind the Science Museum's mission and programs!









# THANK YOU

## to Our Contributors

### \$100,000+

3M

Andersen Corporate Foundation  
Fred C. & Katherine B. Andersen Foundation  
Katherine B. Andersen Fund of The Saint Paul  
Foundation  
Roger and Barbara Brown  
The Cargill Foundation  
Flint Hills Resources  
Greater Twin Cities United Way  
HealthPartners  
Hugh J. Andersen Foundation  
Manitou Fund  
Medtronic Communities Foundation  
Gilman and Margaret Ordway  
Target Foundation  
U.S. Bank

### \$99,999 - \$50,000

Anonymous (2)  
Accenture LLP  
Darrell H. Boyd\*  
Patrick and Aimee Butler Family Foundation  
Delta Air Lines  
The Donaldson Foundation  
General Mills Foundation  
Orville C. Hognander, Jr.  
Horton Holding, Inc.

John and Ruth Huss  
Roger and Nancy McCabe Foundation  
McCarthy-Bjorklund Foundation  
The McKnight Foundation  
The Saint Paul Foundation  
The Scrooby Foundation  
Thomson Reuters

### \$49,999 - \$25,000

The Cove Foundation  
Berger Transfer & Storage, Inc.  
Donald Weesner Charitable Trust  
The Driscoll Foundation  
Ecolab Foundation  
Donald and Patricia Garofalo  
H.B. Fuller Company Foundation  
Dorothy and C. Johnson  
MAHADH Fund of HRK Foundation  
Mahle Family Foundation  
National Oceanic & Atmospheric Administration  
Otter Tail Power Company  
Piper Jaffray Foundation  
Richard M. Schulze Family Foundation  
Margaret\* and Hugh Schilling  
Jean and Mark Schroepfer  
Securian  
Xcel Energy Foundation  
Thomas and Julianne Youngren

### \$24,999 - \$10,000

Avant Energy  
Best Buy Co., Inc. and Best Buy Foundation  
Ron and Janet Christenson

John and Theresa Cosgriff  
The Dorsey & Whitney Foundation  
Emerson  
The Estee Lauder Companies Inc.  
Charlotte Fitzpatrick Brown  
Mr. and Mrs. William B. Frels  
GSK  
International Paper Foundation  
Betty Wold Johnson  
Art & Martha Kaemmer Fund of HRK Foundation  
Kinney Family Foundation  
David and Sarah Lilja  
Margaret H. and James E. Kelley Foundation  
Richard and Joyce McFarland  
Metro Transit  
Midwest Coca-Cola Bottling Company  
William and Gail Munsell  
The Nicholson Brothers Fund of The Saint Paul  
Foundation  
Richard and Nancy Nicholson  
Robert Owens  
The Pentair Foundation  
Louise Benz Plank  
Steve and Barbara Proeschel  
The Rodman Foundation  
Allan and Deborah Schneider  
Marion Scott  
Gary and Nanci Smaby  
Travelers Companies, Inc.  
Verizon Foundation  
Virginia Wellington Cabot Foundation  
Wells Fargo Foundation Minnesota  
The Benno and Gertrude Wolff Family Fund  
of The Saint Paul Foundation

*\*Deceased*



## \$9,999 - \$5,000

Anonymous (2)

Kari Arneson and Cody Blotske

H. Brewster and Martha Atwater

Ayco Charitable Foundation

BAE Systems

Josephine and Gordon Bailey

Mark Baird and Janis Maercklein Baird

Gay and Ron Baukol

Beckman Coulter

Ruth and John Bergerson

Carol and Craig Beveroth

Holly and Brad Boehne

Boss Foundation

Alison Rempel Brown and Owen Brown

Nicky Benz Carpenter\*

Jane and Mark Chronister

Carlson Family Foundation

Judson and Shelley Dayton

Julia W. Dayton

Ruth Stricker Dayton

Dellwood Foundation

Dick and Joyce H. McFarland Family Fund of The

Minneapolis Foundation

Dorothy M. Leonard Trust

Elizabeth Driscoll

Education Minnesota Foundation for Excellence  
in Teaching & Learning

Faegre Baker Daniels LLP

Anna Gerenday

Louis F. and Kathrine E. Hill

Wayne and Dianne Hoeschen

The Hubbard Broadcasting Foundation

James and Peggy Hunter

Jewish Community Foundation

Judith and Alan Johnston

Morton and Merle Kane

Rick and Marcia Lund

Stephen and Kathi Austin Mahle

Margaret Rivers Fund

Mayo Clinic

McVay Foundation

Michael V. and Ann C. Ciresi Foundation

Nancy Middleton

The Minneapolis Foundation

MTS Systems Corporation

Mutual of America

John and Marla Ordway

Dr. Frederick J. Palensky and Mrs. Barbara  
J. Palensky

*\*Deceased*






Nickolas and Judith Priadka  
William D. Radichel Foundation  
Red Wing Shoe Company Foundation  
Richard and Shirley DeLeo Fund of The  
Saint Paul Foundation  
Sandra Roe  
Susan Rosenberger  
Jenni and Edwin Ryan  
Benno and Marlys Gapstur Sand  
Schwegman, Lundberg & Woessner, P.A.  
Shakopee Mdewakanton Sioux Community  
Todd and Cathie Soller  
Evelyn Sweasy  
Terhuly Foundation  
Tides Center  
Union Pacific Foundation  
UnitedHealth Group  
Vanguard Charitable  
Bernie and Jan Wagnild  
Andrea and Tim Walsh  
Neil Winston  
Carl and Janet Kuhrmeyer

## **\$4,999 - \$2,500**

Anonymous (4)  
Chady and Mireille AIAhmar  
Alex Stern Family Foundation  
Ken Allen  
Gloria and M. George Allen  
Suzanne Ammerman  
Sarah Andersen and Christopher Hayner  
Charles and Nancy Arend  
Debra and James Arneson  
Jerry L. Artz  
Association of Science-Technology Centers

Baker Tilly Virchow Krause, LLP  
Bank of America Foundation  
Andy and April Barker  
BASF Corporation  
The Lillian Wright & C. Emil Berglund Foundation  
Marcy and Randy Betcher  
Bill and Katherine Fox Foundation  
Bio-Techne Corporation  
Colleen P. Brandel  
Alice and Charles Bresnahan  
Priscilla Brewster  
Thomas and Mary Campbell  
Carlson Caspers  
Catholic Community Foundation  
Drs. Wenlan Cheng and Peter Lee  
Alex and Judy Cirillo  
Clayton Family Foundation  
Consolidated Communications Community Fund  
Gretchen and John Corkrean  
Charles and Kathryn Cunningham Family  
Foundation  
Laura and Mike Day  
Roy Dika  
William and Janice Dircks  
Jack and Kirsten Driscoll  
Wally Ebertz and Kathryn Schoenberg-Ebertz  
Dondi and Daphne Edwards  
Eric and Lisa Eng  
Timothy and Christine Etter  
Tony and Janelle Fisher  
Chuck and Rhonda Fletcher  
Francis D. & Eunice S. Butler Fund  
Jimmy and Juliette Francis  
Joan and James Gardner  
Terry and David Gilberstadt  
Geoffrey Glasrud and Petra Lodder

Duane Gorder  
J & B Group, home of No Name  
Sandra A. Johnson  
Bill and Christy Jonason  
Keith and Karen Kaestner  
Paul and Carey Kasbohm  
George and Christine Kehl  
Kinder Morgan Foundation  
KPMG LLP  
Land O'Lakes Foundation  
Mary LaRock  
Thomas and Bridget Lee  
Robert and Melissa Leick  
Allen and Kathy Lenzmeier  
Jean R. Ljungkull  
Elizabeth Maloney and Ralph Magnusson  
Paul Martin and Maria McNamara  
Robert and Laurie McNeill  
Michael Merrick  
Douglas and Sandra Milroy  
Marilyn and Ron Mirsch  
Sid Munson and Maralyn Weihe  
Joan and Richard Newmark  
Nushka Fund  
Timothy and Gayle Ober  
Robert M. Olafson  
OneBeacon Insurance Group, Ltd.  
Phil and Cassy Ordway  
Kori and Michael Parish  
Luann and Michael Pendency  
Alicia and Bryan Phillips  
Phyllis S. Poehler/Walter E. Stremel  
Charitable Trust  
Judy Poferl  
Mary and Robey Price  
Susan and Paul Rankin



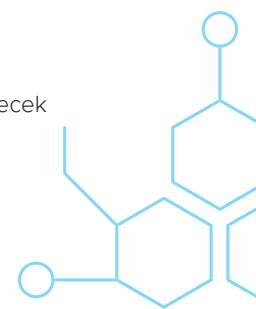
Ritchie Engineering Company  
Salem Foundation  
Lisa and Jay Schlosser  
Jennifer and Blake Schmidt  
Jim and Yvonne Sexton Family Foundation  
Sit Investment Associates Foundation  
Renee and Tim Skidmore  
Helene and Jeff Slocum  
St. Croix River Fund of the St. Croix Valley  
Foundation  
The St. Paul Radiology Foundation of The  
Saint Paul Foundation  
Star Tribune  
SurModics, Inc.  
Jean Taylor and Roger Griffith  
The Tennant Foundation  
Steve and Jyneen Thatcher  
Stephen Thompson  
Judy and Daniel Titcomb  
Richard and Celeste Trembley  
TSI Incorporated  
Michael Urbanos and Rosann Fischer  
Michael and Lisa Vale  
Archie D. & Bertha H. Walker Foundation  
Jill and Matt Walker  
Mary and Stuart Weitzman  
Jane and James Wiltz  
Theresa and Jim Wise

## **\$2,499 - \$1,000**

Anonymous (18)  
Beverly and Steven Aanenson  
Alice and Fred Wall Family Foundation  
Adrian and Sally Almquist  
Mary Anne Anderson

Quentin and Mary Anderson  
David and Debra Andreas  
Pete and Margie Ankeny Fund  
API Group, Inc.  
Karon Armstrong  
Tom and Sharon Auth  
Sondra and Gerald Backhaus  
Kathryn and Tom Barnett  
Barr Engineering Company  
James Beardsley  
Bemis Company Foundation  
Ellen and Michael Bendel-Stenzel  
Arthur Bergstrom and Alice Stelling  
F. R. Bigelow Foundation  
Patrick and Patty Bradley  
Roger and Ronnie Brooks  
The Caravan Trust  
Dr. A. S. Cargill  
Heather Christianson  
Clifford C. & Virginia G. Sorensen Charitable  
Trust of The Saint Paul Foundation  
Yvonne Condell  
Lydia Crawford and Phil Davies  
Ellie Crosby  
Darryl Cuddy and Kristin Ruble  
Dakota Electric Association  
Mark and Mary Davis  
Edward and Sherry Ann Dayton  
Deloitte  
Charles Denny  
Ariel Dickerman  
Sara and Jock Donaldson  
Edward and Jo Anne Driscoll  
Robin and Pamela Ehrlich  
The Elizabeth C. Quinlan Foundation  
Federated Insurance

Mr. & Mrs. Litton Field, Jr.  
Tom and Ellen Fridinger  
Susan Gabrys and Roger Shimada  
Deneen Gannon and Brian Neidermeier  
Lowell and Lety Gillette  
Glen A. Taylor Foundation  
Alan and Lynn Goldbloom  
Cindi and Harold Goldfine  
Elizabeth and Michael Gorman  
Charles and Cheryl Granlund  
Karen and Gary Gray  
Patricia Haddad  
Roger Hale and Nor Hall  
Heidi Hardner and Bill Humphrey  
Robert L. Harms Family  
Hawkins, Inc.  
Thane and Blanche Hawkins  
The Head Family Foundation  
Martha Head  
Donald Helgeson and Sue Shepard  
Karel and Mike Helgeson  
Lowell and Cay Shea Hellervik  
Dean and Nancy Heng  
Rodney and Susan Heuer  
Randy and Teresa Hillson  
Judith and Walter Hinck  
Elfrieda Hintze  
Elizabeth and Edwin Hlavka  
John and Linda Hoeschler  
Diane and Tony Hofstede  
Lori Holdridge  
Bill Holecek and Luana Marrier Holecek  
Holiday Inn St. Paul Downtown  
William and Linda Holley  
Michelle and Dave Horan  
Dr. James and Janelle House






Larry and Frances Hum  
IBM Foundation  
Lucy Imholte  
Elizabeth and Peter Jackson  
Jeffrey A. and Debra J. Kohen Fund  
Joanne and Jerry Robertson Fund of Gulf  
Coast Community  
WILEY/Inscape Publishing  
Charlotte and Ward Johnson  
Lucy Rosenberry Jones  
Anne Joseph and Philip McGlave  
The Julia Kaemmer Fund of HRK Foundation  
Charles and Mary Jungmann  
Kenneth H. Keller and Bonita F. Sindelir  
Martin and Esther Kellogg  
Greg and Gail Kenton  
Duane and Barbara Kocik  
Jeffrey and Debra Kohen  
Drs. Robert Kriel and Linda Krach  
Robert and Denice Krish  
Constance and Daniel Kunin  
Megan Kuntuzos  
L. and N. Andreas Foundation  
James and Gail LaFave  
Lake Monster Brewing Company  
Lakeland Companies  
The Laura Jane Musser Fund  
Jack and Joan LeGare-Hansen  
Laurence and Jean Lejeune  
William Lipschultz  
George M. Logan  
The Longview Foundation  
Richard and Juanita Luis  
Bill Lurton  
Rhoda and Don Mains  
Dusty Mairs

Frederick and Helen Markwardt  
The Mauriel Family Foundation  
MaryAnne and John Mauriel  
Susan and Edwin McCarthy  
Robert and Polly McCrea  
Vanessa McGuire  
Marlene McKeown  
Kendrick Melrose  
Mendon F. Schutt Family Fund of  
The Minneapolis Foundation  
Darryl and Jo Meyer  
Joseph and Jane Micallef  
Mikros Engineering, Inc.  
Mille Lacs Corporate Ventures  
Evelyn Miller  
Katherine Miller and Robert Anderson  
Michael C. and Robin M. Miller  
Jerry and Jane Mlinar  
George and Cheryl Moore  
Erik and Karen Nelson  
Barbara and Raleigh Nelson  
The Nicholson Family Foundation  
Ford and Catherine Nicholson  
Todd and Martha Nicholson Fund of  
the Nicholson Family Foundation  
Micah and Nikki Niermann  
D. William O'Brien and Julie  
Smendzuik-O'Brien  
Audrey and David Olsen  
Bart and Kandi Osborn  
Amy S. Owen  
E. Ronald and Pat Parish  
Tom and Sally Patterson  
Missy and Willard Patty  
Deborah Pederson  
Arlene Peterson





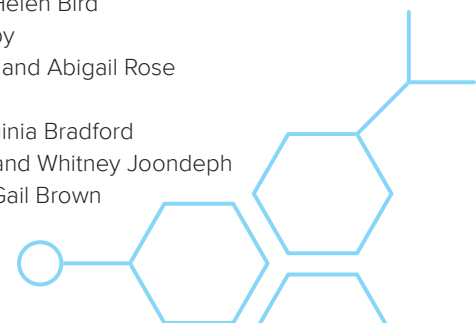
Philip and Katherine Nason Fund of The Saint  
Paul Foundation  
Pamela Hermann and Daniel Polglaze  
David and Norma Porter  
Diane and George Power  
PricewaterhouseCoopers  
The Queenan Foundation  
Thomas and Mary Kay Racette  
Donna and James Radford  
Kristin Rasmussen  
Rehael Fund of The Minneapolis Foundation  
Remele Family Fund of The Minneapolis  
Foundation  
Peter and Mary Rhode  
Daniel and Christine Rice  
Jane Richards  
John and Arlis Riedel  
Daniel Rischall and Karen Blumberg  
Jerry and Joanne Robertson  
Robins, Kaplan, Miller & Ciresi L.L.P.  
James and Sheren Rogne  
Barbara Roy  
Thomas Rumreich and Ruth Ronning  
Juliana Kaufman Rupert  
Ryan Companies U.S., Inc.  
The S. Bartley Osborn Family Charitable Trust  
Wayne Salverda  
Dorothy Sanford  
Karen and Steve Sanger  
Nancy DeSchane and Dean Sather  
Scandia Marine Lions Club  
Jason Schreiber  
Jim and Jan Seifert  
Jon and Jennifer Severson  
Anne Simpson  
Robert Sivertsen

Richard and Marilyn Skimland  
Carolyn Sorensen and Dave Kelm  
Spatz Family Partnership  
John M. and Tammy Lee Stanoch  
Stinson Leonard Street LLP  
Robert and Celia Stretmater  
Jeanne and Rupert Strobel  
Karen Tracy Sutherland  
Sarah Wilson Sweatt  
Ron and Margaret Tabar  
Tim and Naomi Tatarek  
Glen A. Taylor Foundation  
Grizelda and Robert Taylor  
Ergodyne/Tenacious Holdings Inc.  
Jay and Mary Kay Thacker  
Jon and Lea Theobald  
Dr. Gerald W. and Susan E. Timm  
Rick and Suzy Titcomb  
TKDA  
Elsie Trapp  
Greg Tuenge  
Twin City Filter Service  
Kathryn and Martin Urberg  
Fred and Alice Wall  
Dr. Ann and Mr. David Wasson  
Maria and Michael Westfall  
The Charles A. Weyerhaeuser Memorial  
Foundation  
Ted and Nancy Weyerhaeuser  
Colleen and Keith Wieteck  
Robert and Jeanette Williams  
Margherita Gale Harris  
The WMN Foundation  
Margaret and Angus Wurtele  
Tamara Young Heck  
Eric Zilley

Larry and Victoria Zobel  
Michael Zwank and Nienke Wijnia

## **\$999 - \$500**

Anonymous (25)  
Alice and Arthur Aamodt  
Jim and Julia Adams  
Sara and Ranjit Ahluwalia  
Tom and Arlene Alm  
Owen Anderson  
Gregory and Janice Aplin  
Drew and Laurie Arnold  
Sharon and Terrance Avent  
Diane and Robert Awsumb  
Ginger and Walt Bailey  
John and Jill Baltes  
Lynda and Stephen Bany  
Diana J. Barber  
Joel and Susan Barker  
Jane and Walter Barry  
Brian and Jennifer Bault  
Glen A. Bean  
H. John and Vanessa Beardsley  
Dan and Jody Beech  
Robert Beltz Jr  
Rev. Audrey and Andrew Benjamin  
Pamela and Bruce Bennett  
Jodi Billy and William Van Dyke  
Michael and Helen Bird  
Elizabeth Bixby  
Michael Blum and Abigail Rose  
Lois E. Bohon  
Larry and Virginia Bradford  
Eric Brodeur and Whitney Joondeph  
Andrew and Gail Brown

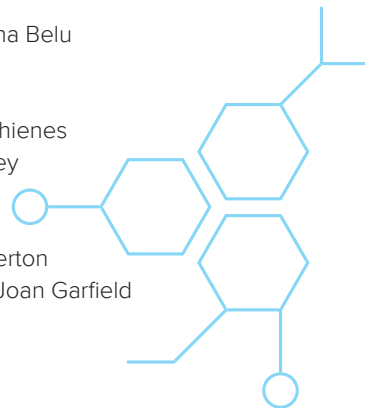




Nancy Carlson  
Pete and Laura Carpenter  
David Cartier  
Michael and Judith Cartier  
City of Calumet  
Richard W. and Jean Illsley Clarke  
CoBank  
Al Colling  
James Cowie and Kathleen Keegan  
Charles and Trudy Cowman  
Kenneth and Gwen Crabb  
The Craighead Family Fund  
Donald H. and Sandra L. Craighead  
Robert Crone and Mary Cameron  
David and Kitty Crosby  
Gretchen and Robert Crosby  
Yang and Mo Dao  
Deluxe Corporation Foundation  
Chris and Heather Demko  
John and Nicole Donlon  
Jay Dornfeld  
Tom and Paula Dosland  
Dr. Yang Dao Fund of The Saint Paul Foundation  
David and Patricia Drew  
Joan Duddingston  
Karen Durant  
Norman Ehrentreich and Jennifer Nylander  
OECS Inc.  
Keith Eklund and Lei Zhang  
Tom and Sharon Engels  
Ernest and Sarah Lehmann Family Fund  
Richard and Lisa Ernst  
Titus and Carol Evans  
Shannon Evenstad  
Lyle and Jane Fahning  
Jonathan and Holly Brod Farber

Craig Feathers and Amy Kolan  
Richard M. and Beverly Wexler Fink  
Bruce and Debra Firkins  
Randall and Amy Fish  
Mike and Linda Fiterman Family Foundation  
Chadwick and Ashley Flitter  
Dr. Arlo and Stephanie Frost  
Michael and Rebecca Frost  
James and Julie Gasper  
Robert and Charlotte Gavin  
James and Joyce Gay  
Bob and Sue Gehrz  
Jerry and Beth Geis  
Teddy and James Gesell  
Gilbert Mechanical Contractors, Inc.  
Jason Gilbertson and Katja Jeanneret  
Robert and Phyllis Goff  
Mary and Steven Goldstein  
Doris Graf and Ken Berglund  
Sara K. Graffunder  
Greystone Foundation  
Kristin Guild  
Dorothea Gumbrill  
Perry and Carol Hackett  
Rebecca Haddad and Ziad Amra  
McCormick Hadley Family Fund  
David and Catherine Hanson  
Samantha and Colin Hanson  
Steven Harmer  
James and Roberta Harper  
Jim Harrell and Louise Mattson  
Ingrid and Alfred Harrison  
Robert and Justine Haselow  
Michele and Eric Haugen  
Joel and Debby Hendrickson  
Jim Henk and Kathy Donovan

Anne Pantelich and Douglas Hepper  
Jackie and Marc Hertz  
Carrie and Richard Higgins  
Joel and June Hoffa  
Stan and Jane Hooper  
Kate and Rob Huebsch  
John And Kathleen Rooney Family Fund  
of the St. Paul Foundation  
Fredrik and Sharon Johnson  
James E. Johnson  
Nancy and Jim Johnson  
Joel Johnson and Tara Uppman  
Richard H. Johnson and Rev. Dr. Janet Johnson  
Roger N. Johnson  
Janet N. Jones  
William and Nancy Jones  
Joel T. Juelich  
Andrew and Virginia Kass  
Kodo Kawamura and Irene Carlson Kawamura  
Miriam and Erwin Kelen  
Byong Moon Kim and Kyung Hyang Park  
Gary and Greg King  
Matthew J. Kisch, Jr.  
Jerry and Nancy Knoth  
Cameron and Natasha Kotula  
James Leibold and Nancy Cameron  
Richard and Sally Leider  
Bruce Lemmons and Anna Belu  
Joe Lenartz  
Dick and Peggy Lidstad  
Leon Lillie and Jessica Thienes  
Calvin and Christine Litsey  
S.K. and S.F. Lo  
Dana R. Lonn  
Ann Lowry and John Overton  
Michael Luxenberg and Joan Garfield





Connie MacRostie and Rebecca Miniscalco  
Kathy and Tom Malaske  
Deane C. Manolis  
Edward G. Maranda  
Megha and Saugar Maripuri  
David and Staci Mattson  
Charles and Carolyn Mayo  
Peter McCloud and Amy Irvin  
Andrea and Larry McGough Fund of  
the Catholic Community Foundation  
Adrian McNulty  
Barbara Meier and Peter McSwiggen  
Jerry Meigs  
Sharon Meyer and Rodney Massey  
Janice and Russell Michaletz  
Minnesota Department Of Transportation  
Florence Sprague and David Misemer  
Lynn Montgomery  
David Moteelall  
John and Marlene Mulrooney  
Peter and Michelle Nagel  
Pamela Nagorske and Family  
National Checking Company, Inc.  
Amy and Jeff Nelson  
Charles Nelson  
Win and Christie Neuger  
David and Sheryll Norback  
David and Billie Novy  
Mary and Gary Nussbaum  
Mary and Gary O'Brien  
Brian O'Connell and Lynne Rasmussen  
Peter and Bonnie Olin  
Deborah Olson  
Donald and Charlotte Orlando  
C. Thomas Osthoff  
David and Valerie Pace

Julie and Robert Paschke  
Roger and Karen Pavlis  
Lisa and Gary Pederson  
Renè and Barbara Pelletier  
Jonathan and Erin Penne  
Timothy and Patricia Peterson  
The Philemon C. and Barbara Blanch Roy,  
Jr. Fund of The Saint Paul Foundation  
Polaris Industries Inc.  
James and Louiva Puffer  
Shannon and Theodore Raveling  
Reell Precision Manufacturing  
Daniel and Kari Rehrauer  
James and Julie Reimer  
Frank Rekuski and Kerri Shaughnessy  
Nancy and Kevin Rhein  
Richard and Beverly Fink Family Foundation  
John Riehle in memory of Mary Riehle  
David Ristuben and Leisa Meeuwen-Ristuben  
Carol Robertson  
David A. Robinson  
Bud and Kathy Rooney Family  
Craig and Mildred Rotzoll  
RSP Architects, Ltd.  
Denise Rutherford and Maurice Kuypers  
Dr. and Mrs. Robb Rutledge  
James and Beatrice Sanders  
Valeria C. Sassi & Jose Sebastian Battig  
Jim and Georgie Saumweber  
Tom and Lynn Schaefer  
Nancy and Jeff Schmitz  
Paul and Sherrill Schottler  
Matthew Schrack  
Robert and Evangeline Schroeder  
Science Museum of MN Designated Fund of  
The Saint Paul Foundation

Daniel and Donna Scott  
SEH - Short-Elliott-Hendrickson, Inc.  
Stephen and Mary Seidlitz  
Dennis and Barbara Senneseth  
Joseph and Kristina Shaffer  
Richard and Barbara Shank  
Shapco Printing, Inc.  
Raymond Shields and Opal Richards  
Sieff Family Foundation  
Claudette Skaja and Chris Christianson  
Craig and Barb Skone  
Douglas and Katherine Skor  
Patrick Hagan and Brenda Smeby  
Joan Smith  
Robert and Angela Smithson  
Toni Sordahl  
The Stablich Foundation  
Maureen Steinwall and Mike Lavelle  
Elizabeth and Eric Stephan  
Dr. Elizabeth Styrvoky  
Sunde Land Surveying, LLC  
John and Sandra Ann Sutter  
Terry E. Swor  
The T. Rowe Price Program For Charitable Giving  
Molly Taylor  
James and Diane Tonnison  
The Thayer Family Foundation of the MN  
Community Foundation  
Robin Tost  
Dick Trapp  
Emily Anne Staples Tuttle Fund  
Sue-Mii and Robert Tuttle  
The U.S. Charitable Gift Trust  
John and Jennifer Urbanski  
Wayne and Katherine Vagts  
Carroll and Michele Vance

Victory Parking, Inc.  
Jim and Cheryl Viera  
Yan Vinnik  
Bill and Karen Walkowski  
Michael and Stacy Walters  
Jim and Ruth Weaver  
Eric and Jody Wetterlind  
Annette and John Whaley  
Joel and Nancy Wiberg  
Richard and Jane Wicklund  
Nancy and Larry Wigley  
Stephen Willging  
Jane and Brian Williams  
Jennifer Willner and Brendan Bennett  
Wayne and Mary Lou Wolsey  
Sarah Youngerman and Paul Cassidy  
Tammi and Riad Youssef  
Michelle and Fabian Zeller

## **\$499 - \$250**

Anonymous (58)  
Alexander Aavang and Amanda Hayward  
Carolyn M. Adams  
Agilent Technologies Foundation  
Michael and Jackie Akin  
Ray and Kittie Alexander  
Andrews Allen  
Jim and Amy Almendinger  
Ameriprise Financial  
Richard and Sarah Amos  
Art and Judy Anderson  
Deloris A. Anderson  
Eric Anderson and Geraldine Urbanski  
Katherine Anderson  
Lawrence Anderson and E. Guerero-Anderson



Roger and Margie Anderson  
Thomas and Amy Anderson  
Thomas and Rhonda Anderson  
Tom and Meredith Anderson  
Karen L. Angell  
Nigel Anton  
Roger H. Appeldorn  
Charles Arend  
Terry and Betty Astleford  
Susan and David Austin  
Avago Technologies  
Joseph and Michael Bailey  
Justin and Scholastica Baker  
Adrienne Banks  
Laird Barber  
Allison and Robert Barmann  
Michelle and Phillip Barry  
Dana Bartocci and Jason Borden  
Bernard Barton and Elsa Carpenter  
Robert Barton  
Katherine Bass  
Malcolm and Mary Bastron  
Roger Battreall and Jayne Funk  
James and Marlene Bauer  
Sarah Baxter  
Richard and Tiffany Belmonte  
Terriel Bennett  
Bonita Benson  
John and Barb Benson  
Phyllis E. Berg  
Brenda and Mark Berg-Arnold  
Jennifer and Matthew Bertolatus  
Timothy and Susan Bertrand  
Shane and Lori Bethke  
Miquette and Mark Bethke  
Robert Beugen and Joanne Ferraro

Christina and Mark Bigelow  
Rebecca and Robert Binder  
John Bisgaard  
BNSF Railway Foundation  
Sokun Bobson and Matthew Derosier  
Muriel Bochnak  
Sarah and Peter Borgen  
Boston Scientific Foundation  
Jennea and Steven Botts  
Paul E. and Rose Marie C. Boucher  
Phillip and Kristine Boyle  
Steve and Gail Brand  
Ken Breheim and Linda Green  
Steve Brehm  
Severin and Carol Brenny  
Brock White Company, LLC  
Jane and Mark Brossart  
Paul H. Brown  
Sheila and William Brown  
Ann-Marie Burton and Alyssa Rodriguez  
Courtney Burton  
Joseph and Kristen Busch  
Lou and Maureen Bushard  
Christine and Daniel Buss  
Darrell Butterwick  
Brian and Megan Caauwe  
Sue Cammack  
Rwanda and Lloyd Campbell  
Tyler Candee and Jessica Intermill  
Laurie Carlson and William Voedisch  
Alan and Ruth Carp  
Julie Carr  
Thomas and Susan Cathey  
Cecil and Penny Chally  
Oscar Chamberlain and Sue Patrick  
Peggy Chase

Catherine Chenault and Erik Amundson  
Richard Chi  
Alessandra Chiareli and Michael Haase  
The Blackstone Family  
Mary and Francie Christenson  
Bill and Sharon Clapp  
Chris Claude  
Haines Clausen and Barbara Duncan  
Anthony and Katherine Clinch  
Lawrence Cochran and Sandra Williams  
Loyde and Madigan Cochran-Bjerke  
Michael and Michelle Colbert  
Douglas and Sandy Coleman  
Marlene and John Coleman  
Steven and Nancy Colford  
Tom and Cathy Condie  
Laura and Chris Conroy  
Jennifer and Rob Cook  
Doug and Ann Cooley  
Jeanne and David Cornish  
Charles and Nancy Cornwell  
William J. and Maureen Cosgriff  
Robin and David Councilman  
Elizabeth Cowan Wright and Geoffrey Scott Wright  
Jay and Page Cowles  
Tim and Nancy Crothers  
Norman and Carol Crouch  
Nora Crowley  
Adrian Cumming  
Edward and Karayn Cunningham  
Paul and Patricia Curran  
Laurie and David Dahl  
E. Dahlberg and Megan Gunnar Dahlberg  
Thomas Dahlstrom and Michelle Filkins  
Daniel Dahm  
Austin and Rachel Damiani



Kathy Davis  
Marjorie E. DeBace  
DeMars-Kaiser Charitable Fund of The Saint Paul  
Foundation  
Cathy & Bill Dessert  
Jose Diaz  
Hazel F. Dicken  
Lori L. Dietrich and Steven J. Piazza  
Courtney and Josh Dingman  
Robert J. Dolle, Jr.  
Carol Donkersgoed  
Ernest and Mary Dorn  
Jim and Dee Dorsey  
Eric J. Douglas  
Joy and Jon Drummond  
Arthur and Diane Dunn  
Ralph D. Ebbott  
John and Ginny Edgerton  
Brooks and Terri Edwards  
Mary and Stephen Ekker  
Mark Engstrom and Joanne Slavin  
Dale and Karen Erickson  
David and Christine Erickson  
Mark and Chelli Esser  
Wendy Evans  
Karen and Scott Evenson  
Deann Everson and Doug Opheim  
Frank and Patricia Farnham  
Jon and Elyse Farnsworth  
Thomas Feidt  
Evan Fercho  
Brian Ferrari and Jenna Madrid  
Randy Ferrin and Kathy Trombly-Ferrin  
Kevin Filter and Sandra Tazelaar  
John and Mary Finch  
Susan Fisher

CDF Foundation  
Beverly Fitzgerald  
Gary and Dorothy Foley  
James Forman  
Christopher Foster  
Cheri Fox and Jay Miller  
James and Stephanie Fox  
John and Joan Frank  
Bernard P. and Damaris Friel  
Amy and Rich Gammill  
Lee and Bev Gehrke  
Leslie and Richard Gentner  
Geological Society Of Minnesota  
Drs. Pierre and Camille George  
Sally and Bill Giese  
Andrew and Gretchen Gifford  
Mark and Lin Gisselquist  
Barry and Sarah Gisser  
Jennifer Glaeser and Michele Allen  
Kristine and Aran Glancy  
Robert Glass and Marsha Kimble  
Ray and Judith Goebel  
Janet Goehle  
Brianna and Johnathan Gohde  
David and Lessa Gorgos  
Johnathan Gorke and Yongling Zhang-Gorke  
Jean and Ezra Gorman  
Jim Gorski and Mary Lou Rice  
Jeremy Gottlieb and Kate Lockwood  
Richard and Marsha Gould  
Madeline Gragg and Zafar Khan  
Rosemary Graham  
Karen Grewe and David Foster  
George Griffiths  
Chauncey and Ethel Griggs  
Jennifer Gross

Nancy Gruber  
Michael and Carol Guncheon  
Sameer Gupta and Rebecca Ameduri  
Richard and Joyce Gwizdala  
Jesse Hanawalt and Margaret Collins  
Keith and Vicki Hanson  
Nancy Hanson  
Scott Hanson  
Christine and Charlie Hardcastle  
Kathie and Phil Harder  
James Patrick and Meghann Harker  
Charles Hartfiel and Joseph Johnson  
Daniel Hathaway  
Anne E. Haugan  
Phebe Saunders Haugen  
Ron and Lisa Have  
Tanya and Doug Hawkins  
H. B. "Bud" and Carol Hayden  
Heidi and David Hegenbarth  
Bob and Janis Heilig  
Les and Jusy Heinen  
Stefan and Lonnie Helgeson  
Douglas and Tami Henry  
Susan and Lawrence Henry  
Randy Herman and Debra Pallazza  
Michael and Sarah Herrmann  
Dale and Linda Herron  
John Hevern  
Garrett Hilk and Megan Brandt Hilk  
Wil and Myra Hirsch  
Mark and Renee Hohol  
Dan and Emily Hoisington  
Ken and Elizabeth Holec  
John Carlson\* and Lois Hollingsworth  
William and Mary Hollinshead  
John and Barb Holm



Kenneth and Linda Holmen  
Randall and Julie Holmes  
Steven Holmgren and Margaret Browning  
Holmgren  
Corey and Denise Holtz  
Rev. Judy Hoover  
Lanning and Kathleen Houston Foundation  
James and Ann Howard  
Ryan Hunter  
Margaret Hustad-Perrin and David Perrin  
Robert and Nina Hysick  
Cheryl Indehar  
Jeffrey and Carol Ingram  
Rex and Monica Ingram  
Stacie and Myia Jablonecki  
Janet and Dan Jakobitz  
Kevin and Linda Janni  
Leonard C Jannusch  
Jessica Jarnot  
John and Joan Jerhoff  
Elizabeth Jesso  
Barbara and Jim Joers  
Bruce and Judy Johnson  
Darold and Carol Johnson  
Gerhard and Janet Johnson  
Harry and Marian Johnson  
Janette and Rex Johnson  
Jeff and Jenn Johnson  
Orv and Kathy Johnson  
Paul Johnson and Jane Hogan  
David and Julie Jones  
Stephen Jones  
Sheila and David Juran  
Bruce and Marsha Kaehne  
Kenneth and Annette Kaiser  
Michael and Kristi Kampmeyer  
Gary and Angela Kaufman

David and Kathleen Kauppi  
John Keimel and Ellen Kraft  
John Keller and Sandra Jo Shill  
Margaret T. Kelly  
Christopher and Michele Kennedy  
Joseph and Carole Killpatrick  
Andrea and Ray Kim  
Steven King  
George and Julie Kinney, Jr.  
Patricia D. Klass  
Jennifer and Nick Kleinjan  
Thomas Kleinschmit and Liana Magee  
John and Mary Kluge  
Susan Knapton-Hoffmann  
Christine and Paul Knirk  
John Knoedler and Maureen Kane  
Emily Knox and Brian Lammers  
Sam and Kate Knuth  
Daniel and Charlotte Knutson  
Nicole and Joshua Knutson  
Kent and Teresa Kocher  
Agnes Koehn  
Peter and Nancy Koenig  
Meg Kohn  
Bryan Kopitzke and Wade Vannorman  
Brian Krafthefer  
Kristopher and Jacqueline Kramer  
Michael and Karen Kramer  
Jerome Kroll and Kathy Carey  
David A. and Susan M. Kroska  
Michael and Charlene Kruger  
John, Theresa, James and Michael Krues  
Maureen Kucera-Walsh and Michael Walsh  
Larry and Carolyn Kuechle  
Donald Kulick  
Duane and Susan Kullberg  
Jean M. Kummerow







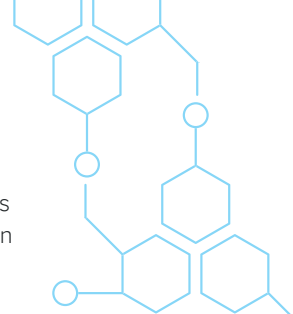
Robert and Margary Kurland  
Michael and Laura Kycek  
Nicole and Derek Laberge  
Ruth Ladwig  
Joanne and David Laird, Jr.  
Karla and Scott Lalim  
Lancer Service Auto Care  
Leonette Lanners and Kathy Carruth  
Robert D. Lawrence  
Kara and Benjamin Lazarus  
Rolfe and Barbara Leary  
Don and Joann Leavenworth  
Art Lebeau  
Dorothy Lee and Cristi Chow  
Steven Lee  
Joshua and Marie Lemon  
David and Mary Jo Lenzen  
Amanda Leonard  
Peter Leppik and Carla Hennes  
David and Mary Le Roux  
David and Laurie Levi  
Sharon and Antoni Lewandowski  
Gregory and Tanya Lewerenz  
Jonathan and Lisa Lewis  
Steve and Judy Lewis  
Liberty Diversified Industries  
Sheila and Stephen Lieberman  
Andrew and Taylor Lilja  
Gerald and Joyce Lillquist  
Diane and Wallace Lind  
Willard and Nancy Lines  
William and Patricia Litchy  
Ken and Harriett Livermore  
Henry and Ginny Llop  
Tim and Susanna Lodge  
Richard and Judy Logan  
James and Caroline Loken

Margro Long  
Margaret Longlet  
Maggie and Todd Loudenslager  
Myron Lowe  
Troy Lund and Dawn Lowe  
Tim Lunsford and Lynn Litchy  
John and L. Dixie Luoma  
George and Anita Lusher  
Lauren Luther and Alex Anderson  
Daniel and Carol Luthringshauser  
Dale and Linda Lutz  
Don and Joan Lynch  
Stephen Lyster and Heather Cooley  
Chris and Kathleen Macosko  
Dr. Joan Madden  
Julie and Ben Maegi  
Frank and Regina Maguire  
Helmut and Mary Maier  
David, Ashley, Frederick & Stonley Malek  
Margaret and Todd Mangelsen  
Colleen and Andy Marine  
Merritt and Betty Marquardt  
Susan and Kevin Marschke  
Mark and Kristine Marshall  
Catherine and Dennis Martenson  
R. R. and C. B. Maslonkowski  
Julie and John Mathews  
John and Joyce Matsuura  
Ron and Mary Mattson  
Drs. Loring and Lucy McAllister  
Donald W. McCarthy  
J. & C. McClellan  
Patricia and Malcolm McDonald  
Mary Bigelow McMillan  
Terry and Mary McNellis  
Jennifer and Randy McVean  
Tom and Joan Mears



Alison and Andrew Mellin  
William C. Melton  
John and Leslie Mercer  
W. Randolph and Marthanne Merton  
John and Karen Meslow  
Allen and Mary Messerli  
Mike and Jeny Meyer  
Linda and Larry Meyer  
Stan and Susanne Meyer  
Sue Meyer  
Aaron and Brittany Meza  
Stacey and Robert Michels  
Cindi Miller  
John and Elizabeth Miller  
Kathryn and Terrence Miller  
KristyAnne and Dave Minkinen  
Kathryn Mitchell and Terry Brueck  
Sheryl and Bradley Moe  
Charles and Kathy Moen  
Jim and Carol Moller  
Bjorn and Margot Monson  
David and Susan Montgomery  
Deborah and Robert Montgomery  
Patrick and Kristina Moore  
Yvonne Morehouse  
R. Vance Morey  
Bennett and Sharon Morgan  
M. Morrison-Pimental and Paul Pimental  
James and Kathy Morton  
Randall and Julie Moseng  
William and Miriam Moss  
William P. Muldoon  
Luann F. Muller  
Craig and Joanie Murphy  
Elizabeth Murray  
Jeff Murray

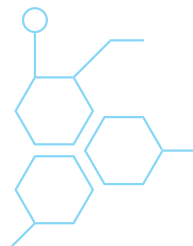
Michael and Marilyn Myers  
Megan and Roxanne Nagel  
Linda Nellis  
Bruce Nelson and Barbara Watts  
Christopher and Michelle Nelson  
Clyde and Judy Nelson  
Audrey and David Nelson  
John and Janet Nelson  
Stephen Nelson  
Marc and Kari Newell  
William and Leah Nicholson  
Gregory and Suzanne Niemi  
Richard Nigon  
Anders Nilsson and Jennifer Wightman  
Hugh and Mary Norsted  
Cynthia Novak-Krebs  
David and Gail Nozal  
Prayati and Mike Ockenga  
Carol and Doug Ogren  
Tom and PJ Olander  
Ben and Rita Olk  
Eugene and Julie Ollila  
Olmsted County Social Services PACE  
Roxanne Olson  
Suzanne Olson  
Wayne Olson  
Nicole and Timothy Olynick  
Kevin O'Malley  
Steven and Katherine Onken  
Louise Otten  
Darryle and Dawn Owens  
Steven and Robin Pachuta  
Palani and Rebecca Palapala  
David and Marilyn Palmer  
Nancy Sue Van Sant and Kenneth Palmer  
John and Julie Parizek



George and Mercy Paul  
Jannette and Gary Paulu  
Mark and Carrie Anne Payton  
Daniel and Nancy Pedersen  
Kenneth Pedersen  
George and Mary Peichel  
Carlos and Michaelle Pena  
Andrea and Marco Perzichilli  
Mr. and Mrs. Stephen Pesavanto  
Nancy Peterson  
Saunya and David Peterson  
Martin and Beth Peyer  
Eugene L. Piccolo  
Kristin and Steven Pippin  
Ed and Peggy Pluimer  
Joel Poeschl and Jeanne Pemble  
Lindsey and Steve Port  
Robert Prentiss Jr.  
Paul and Abigail Pribbenow  
Robert and Maureen Proebstle  
Proto Labs  
Prudential Foundation  
Robert and Laurel Purple  
Irene Qualters  
Richard and Lois Quinn  
Shona Ramchandani  
Tom and Laura Rasmussen  
James W. Reagan  
John Reay  
Dr. Lawrence J. Record and Ginnie Weyerhaeuser  
Chuck Reese  
Bryon and Paula Reinhart  
John and Jamie Lyn Reinschmidt  
Troy and Christy Rens  
Pat Retterath  
Cathy and Andrew Reuter

Jack and Ede Rice  
Steve and Hallie Richards  
Angela M. Bohmann and Jonathan Riehle  
Isaac Rischall and Karen Hessel  
Christine and Duke Ritchie  
Karen Robinson  
Mary and Stephen Robinson  
James and Jennifer Rohl  
Allan and Helen Rossman  
Dr. David A. and Kathleen S. Rothenberger  
RSP Architects, Ltd.  
Vincent and Barbara Ruane  
Russ and Karen Rubin  
Bob and Lynn Rudell  
Dennis and Sharon Ryan  
Patricia and Michael Ryan  
Audrey Sabinske  
Linda and Marlys Sackreiter  
Pauline Samb  
Kristin and Alan Sandau  
Melissa and Jason Sanders  
Sheva and Tom Sanders  
Robert and Beverly Sands  
Becki Sanford  
Pam Sarne and Bob Molacek  
Fred and Ruth Sauer  
Gerald and Elizabeth Sauter  
Steven and Nancy Schachtman  
Thomas and Kathy Scheid  
John P. and Shirley Scheidel  
Gia-Hue and Scott Schendel  
Carey and Paul Schiller  
Brian Schmalz  
William and Cynthia Schmidt  
Marv and Barb Schmidt  
Kara Schmitt

Edward Schneider and Susan Pemberton  
Gary Schoener and V. Katherine Gray  
Loren and Stacey Schoenzeit  
Jeffrey and Patricia Schott  
Louise B. Schroeder  
Kevin and Elizabeth Schwarzbauer  
Craig and Norma Scott  
Mark and Susan Scully  
Gregory Sebald and Patricia Docherty  
Martin A. Segal  
Sarah Seger  
Bruce and Julianne Seiber  
David and Tracy Seitz  
Douglas Sellner and Trisha Follestad  
David and Pamela Serdar  
Kevin and Katie Sevcik  
McNeil V. Seymour  
Rossy Shaller  
Jerald and Leona Shannon  
Frank and Lynda Sharbrough  
Gregory and Jane Shaughnessy  
Sonja Short and Mike Vraa  
John and Nancy Showalter  
Wilfried and Louise Shushelnycky  
Morton and Artice Silverman  
Dr. Byron H. Simmons  
Tom and Sharon Simpson  
Stanley Skinner and Sarah Prim Skinner  
Marianne Short and Ray Skowrya  
Arthur Smith and Marcia Thoen  
Brandon Smith and Amber Kispert  
Jacqueline Smith  
Mr. and Mrs. Bradner Smith  
Karen Smith and Kristen Miller  
Karl and Lila Smith  
Lowery and Mary Ann Smith





Robert Smith  
Steven and Darlene Smith  
Daniel Spiegel and Marilyn Robinson  
Kathleen Stack  
Paul Stein and Marie Kelsey  
Glen and Linda Stenlund  
Robert Stoltman and Sharon Walesch  
Macia and John Stout  
Jenna Strain and John Lutz  
Stephen and Cecilia Strauss  
Chad Strunk and Gail VonWahlde  
Ben and Bridgette Suri  
Susan Surine  
Joshua Swanson  
Frank and Doreen Swendsen  
Julie Switzer and Matt Layman  
Selmer and Alice Syverson  
Margaret and John Taft  
Joseph and Vivien Talghader  
Kevin and Katie Tavares  
Thalia and Larry Taylor  
TCF Foundation  
Mary and Donald Tehven  
Eric Tennesen and Sarah Kolar  
Michael and Susan Tewksbury  
Susan and Stephen Theissen  
Dave and Kara Therkelsen  
Jeanette Thomas and Larissa Nelson  
Caroline and Mary Gwen Thompson  
Trudy and Dan Thompson  
Robert and Pearl Thompson  
Thrivent Financial  
James and Stephani Tikalsky  
HRK Foundation  
Karl and Marian Tise

Mary Tracy  
David Tronson  
Jerry and Rita Trupe  
Marie and Jon Tuhy  
Thomas and Virginia Turba  
Alicia Turenne and Mark Kristjanson  
James and Linda Turner  
Megan and Andrew Ulland  
United FCS  
John and Melissa Uppgren  
Josh Urdahl  
UTC Aerospace Systems  
James and Virginia Vandervest  
Victoria K. Veach  
Michael and Susan Vekich  
Karen Viskochil  
Ray and Terry Voelker  
Dennis and Kim Vogel  
Erik Giberti and Gretchen Voss  
David and Marilyn Wachs  
Lawrence and Gretchen Waggoner  
Marianne Remedios and John Wald  
Richard Walker  
Dale and Linda Wallner  
Mary Wandrei and John Schrager  
Robert and Ellen Ward  
Nicole Wascoe Bauman  
James and Sharrol Webb  
Berton and Cynthia Weberg  
Larry Wechsler  
Bonnie Weisenburger  
Lauren and Josh Weiser  
Jim Weiske  
Melvin Weiss  
Samuel and Lacey Welter

Dave and Joyce Wenck  
Jeff and Mary Werbalowsky  
Jane and Dobson West  
Anita Westberg  
Richard and Judy Wheeler  
Barbara C. White  
David and Nancy Whitney  
Nedra and John Wicks  
Donald and Claudia Wiebold  
Frances and Frank Wilkinson  
Michelle Williams and Rob Kahl  
Dan and Ruth Ann Willius  
Kent and Ann Wilson  
Cynthia A. Wiltjer  
Thomas and Estelle Winiecki  
Louis and Carole Winslow  
Frederick and Eleanor Winston  
James and Rose Wisner  
S.R. Wold, M.D.  
Timothy Wong and Jodi Pope  
Nan and Bob Woodburn  
Amanda and Matthew Woodham  
E. James and Carol L. Woodward  
William and Ghitiann Worcester  
Roberta and David Worrell  
Carl Youngdahl  
Ellen Zacharias and Franklin Segovia-Revis  
Leon and Jeanette Zaczkowski  
Todd, Kyoko, and Emma Zaun  
Tricia and Kevin Zehrer  
Zero-Max  
Bernie and Evie Zeruhn  
Jake and Stephanie Zojonc  
Kevin and Kimberly Zwiefelhofer







# GOVERNMENT GRANTS 2016-2017

The list that follows includes new grants received by the museum from July 1, 2016 – June 30, 2017.

## CITY OF SAINT PAUL

Through the **Cultural STAR Program**:

- For “*Read Between the Lines*,” a Science Live Theater presentation about under-recognized Minnesota-based scientists of color

## STATE OF MINNESOTA

From the **Art & Cultural Heritage Fund of the Legacy Amendment**:

- For *An Archaeological Survey of Dakota County, MN*
- For research Documenting the 1973-1977 *Silvernale Site Archaeological Collection at the Science Museum of Minnesota*
- For research on *Archaeobotany at the Energy Park Site: Plant Use at*
- a *12th-13th Century Native American Village*

From the **Legislative and Citizen Commission on Minnesota Resources**

- St. Croix Watershed Research Station: *Harmful Algal Blooms* research project
- St. Croix Watershed Research Station: *National Wetlands Inventory* research project

From the **Minnesota Department of Natural Resources**

- St. Croix Watershed Research Station: *Tanglewood Habitat Restoration* project

## FEDERAL GOVERNMENT

**National Science Foundation – Advancing Informal STEM Learning program**

- For IPAGE: a research project to study the PAGE model (Peer Alliance for Gender Equity) developed by the museum’s Teacher Professional Development Group and apply it to the professional development for informal STEM educators nationally

**National Science Foundation – Advancing Informal STEM Learning program**

- For *STEM Justice*: a research project to study the Kitty Andersen Youth Science Center’s STEM Justice Framework







## IN-KIND GIFTS

3M

Ms. Elaine Alper

Mr. Robert J. Dolle, Jr.

KARE 11 TV/Gannett Foundation

Liberty Diversified Industries

Metro Transit

Shapco Printing, Inc.

Star Tribune

Mark Stehly Household

Westgaard Properties @ Hickory Lodge

## GIFTS IN HONOR OF

Bruce Erickson

Duane Kocik

Holly Boehne

Frederick and Paula Mitchell

Judith Cartier

James Bachman

Spahn family

Tim Skidmore

## GIFTS IN MEMORY OF

Dean Honetschlager

Ethel Shubat

Helen Hadd

Joan Olson

Karl and Hilda Sophia Magnuson Family Farm

Ione Hildebrandt

Marjorie Christiansen

Sally Lehmann

## FIBONACCI SOCIETY MEMBERS

The Fibonacci Society proudly recognizes donors who have chosen the Science Museum of Minnesota as a part of their legacy.

Anonymous (13)  
Andrews Allen  
Jerry L. Artz  
Gay and Ron Baukol  
Arthur Bergstrom  
Darrell Boyd\*  
Charlotte Fitzpatrick Brown  
Charles Denny  
Dorothy M. Leonard\*  
Tim and Chris Etter  
James E. Fergen\*  
Leticia Hernandez Gillette and Lowell Gillette  
Sara K. Graffunder  
Elfrieda Hintze  
Orville C. Hognander, Jr.  
John M. and Bonnie K. Holub  
Ron and Cathy Huber  
John and Ruth Huss  
Dan Jennrich\*  
Vera J. Likins\*  
Richard and Juanita Luis  
Sid Munson  
Joan and Richard Newmark  
Alfred and Ardis Nier\*

John and Marla Ordway  
Robey Price  
Jessie Richardson\*  
Dean K. Rizer, Ph.D. and Betty Rizer\*  
John H. Roe, III \* and Sandra B. Roe  
Thomas Rumreich, DDS, MA and Ruth Ronning  
Thomas E. Ryan  
Marion K. Scott\*  
Sarah Olson Scovill  
Ted Shabert  
Sylvia Soucheray\*  
William and Renate Sperber  
Anita Ward Thompson\*  
Dona M. Thorpe\*  
Bernie and Jan Wagnild  
Betty Jane Walen\*  
Mary and Stuart Weitzman  
Richard A. Zgodava\*  
Judson and Barbara Bemis\*  
Elinor Brodie\*  
Clara M. Claussen\*  
Frieda H. Claussen\*  
Dorothy Mann Cordry\*

Richard and Shirley DeLeo\*  
Lori L. Dietrich and Steven J. Piazza  
George\* and Ann Doty  
James Taylor Dunn\*  
Harold and Rada Fredrikson\*  
Reuel and Peggy Harmon\*  
John G. and Alice L. Harrison\*  
Audrey Koenig\*  
Lester C. Krogh, Ph.D. \* and Joan M. Krogh  
J. Keith and Barbara MacKenzie  
Wesley and Jean Madsen\*  
Samuel and Natalie Morgan\*  
Hal\* and Luann Muller  
Frances M. Norbeck\*  
Fred\* and Marvel Norton  
Louise Benz Plank  
Robert B. Ridder\*  
Allan and Deborah Schneider  
Inez Roach Thexton\*  
Dr. David D. Webster\*  
Mr. and Mrs. Donald Weesner\*  
Benno and Gertrude Wolff\*  
Gertrude M. Yates\*

*\*Deceased*









# BOARD OF TRUSTEES 2016–2017

## OFFICERS:

George J. Kehl, Chair, *KPMG LLP*

Theresa M. H. Wise, Vice Chair, *Retired, Delta Air Lines, Inc.*

William A. Jonason, Vice Chair, *Dorsey & Whitney LLP*

Jean M. Taylor, Secretary, *Life is Now, Inc.*

Mark Chronister, Treasurer, *Chronister Strategies, Ltd.*

Alison Rempel Brown, ex-officio, *President & CEO, Science Museum of MN*

## TRUSTEES:

Chady AlAhmar, *U.S. Bank Wealth Management*

Holly M. Boehne, *Andersen Corporation*

John Corkrean, *H.B. Fuller Company*

John W. Cosgriff, *UnitedHealthcare*

Dondi Edwards, *Wells Fargo Business Payroll Services*

Eric L. Engh, *Ryan Companies US, Inc.*

Tony S. Fisher, *K1 Sportswear*

Chuck Fletcher, *Minnesota Wild*

Geoff Glasrud, *Flint Hills Resources*

Paul J. Kasbohm, *Star Tribune Media Company*

Melissa Leick, *Cargill*

Luann M. Pendy, *Medtronic*

Bryan K. Phillips, *SurModics, Inc.*

Judy M. Pofert, *Xcel Energy, Inc.*

Steven J. Proeschel, *Piper Jaffray & Co.*

Susan M. Rankin, *Land O' Lakes, Inc.*

Lisa Schlosser, *Thomson Reuters*

James J. Seifert, *Ecolab, Inc.*

Timothy N. Skidmore, *CHS, Inc.*

Todd A. Soller, *Best Buy Co., Inc.*

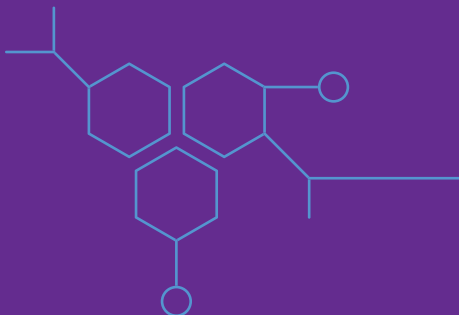
Jennifer Spaulding-Schmidt, *McKinsey & Company*

Richard G. Trembley, *Bank of America Merrill Lynch*

Dr. Michael G. Vale, *3M*

Jill Walker, *PricewaterhouseCoopers LLP*

Andrea M. Walsh, *HealthPartners*







## Thank You, George Kehl

With sincere gratitude, the Science Museum salutes George Kehl for his outstanding service to the Science Museum's Board of Trustees. A trustee since 2011, George chaired the Governance and Nominating Committee, played a key role on the Executive Committee, served on the Presidential Search Committee, and was integral to bringing Alison Brown on board as president and CEO. He led the board this past year as chair, providing thoughtful leadership through the completion of the Science Museum's new strategic plan. Thank you, George, for guiding the Science Museum to continued growth and fiscal prosperity!







## OUR LEADERSHIP TEAM

### **ALISON REMPEL BROWN**

President and CEO

### **MIKE DAY**

Executive Vice President

### **MARK DAHLAGER**

Vice President of Exhibits

### **LAURIE FINK**

Vice President of Science

### **JULIETTE FRANCIS**

Vice President of Human Resources

### **BARRY GISSER**

Chief Financial Officer

### **JOE IMHOLTE**

Vice President of Visitor Experience

### **JOANNE JONES-RIZZI**

Vice President of STEM Equity and Education

### **MIMI DALY LARSON**

Vice President of Mission Advancement

### **DAN WALLACE**

Vice President of Marketing & Brand Strategy

### **SCIENCE MUSEUM OF MINNESOTA**

120 West Kellogg Boulevard

Saint Paul, MN 55102

(651) 221-9444

[smm.org](http://smm.org)



---

**Turn on the Science:  
Inspire Learning. Inform Policy. Improve Lives.**