

Workplace Solution Suite



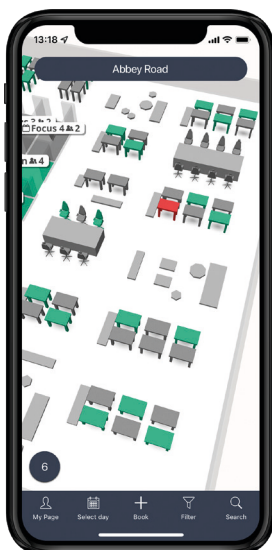


Workplace Solution Suite

Flowscape embraces the concept of the modern workplace and we have an aversion to friction caused by not optimizing workplace processes. Office friction leads to hidden costs, such as decreased productivity, weaker employee relations, and unnecessary facility costs. Our mission is to create a frictionless office environment so employees can focus on doing their job.

Flowmap

The core of our solution suite is Flowmap, an interactive colour map of desks, rooms, resources, and points of interest. An available resource is indicated as green on our Flowmap, while a booked or occupied one is red. The Flowmap a part of our mobile app, desktop software, and kiosk screen display.



Desk Management Solution

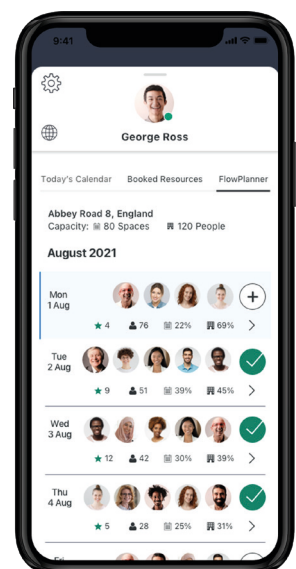
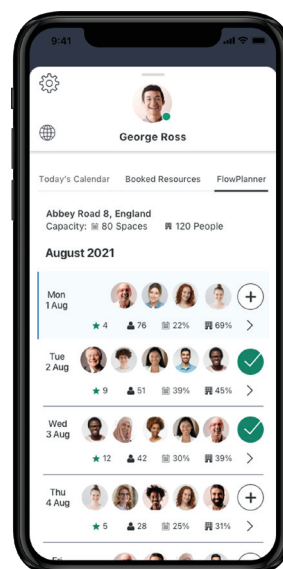
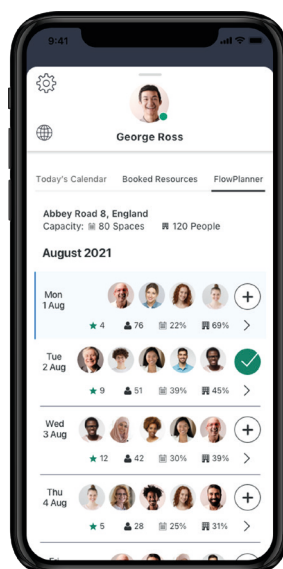
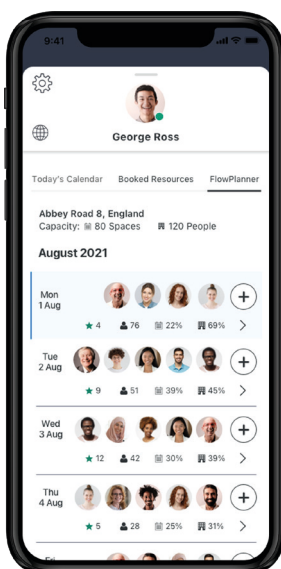
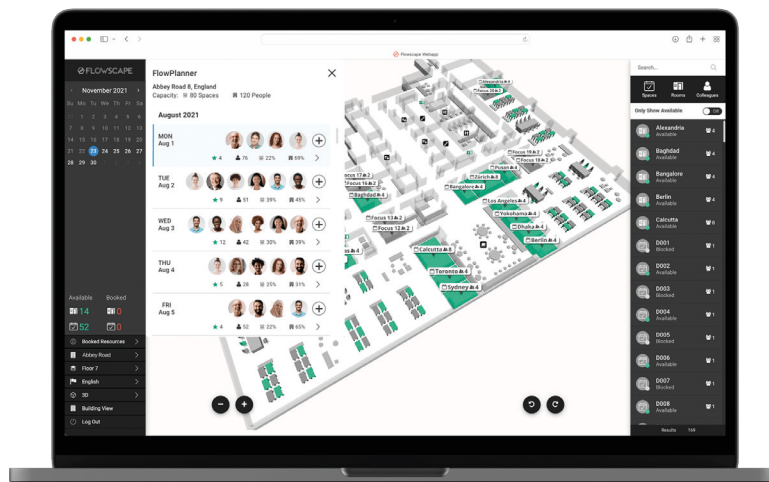
Book a desk from the mobile app or desktop. If you click on a green desk on the Flowmap, you will book it and it will turn red to inform others it is occupied. Use the search function to filter with your preferences to find an available desk. You can also use the colleague finder if you want to sit near a team member. You can book a desk for the day or for several days in advance, as well as book on behalf of colleagues or guests. Find your booked desk with our built-in wayfinder, and use our analytics tool to monitor desk utilization or to produce cleaning reports for cleaning staff.

FlowPlanner - NEW FEATURE! -

FlowPlanner is our new web application that empowers employees to efficiently plan their attendance in the office. Flowplanner enables staff to tag specific colleagues in order to view when they will be in the office, so that they can then book the same days if they need to collaborate on project work. Employees can set up a 'colleagues list' to scan all of their future office attendances with just one click. And with one further click a desk or workspace can be booked. Flowplanner is also a useful application for Building Managers to monitor office attendance and to ensure that it never exceeds the building capacity. If the maximum capacity is reached for a certain day, the employee will be guided to book a space on another day. Building Managers can also view an attendance report for any specific day.

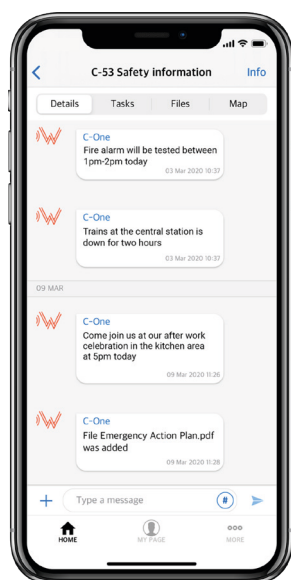
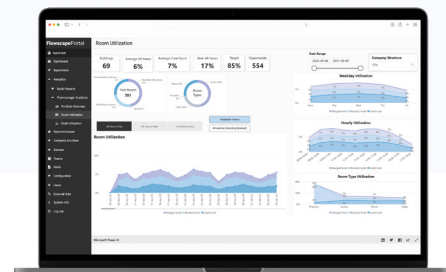
With FlowPlanner you can:

- Plan in advance which days you should go to the office
- View colleagues' planned office attendance
- Add team members to your selected 'colleague list'
- View desk availability to determine if a desk needs to be pre-booked
- Limit attendance at the office based on office capacity
- Report office attendance on specific days



Workplace Analytics

Gain a complete understanding of the utilization of office resources with Flowscape's sensors and our powerful analytics portal. Get real-time data on the utilization of rooms, desks and different zones. Analyze the data in a monthly, weekly or daily view, or select a specific period for analysis. Use the collected data to optimize your office utilization or to make management decisions about your office space.



Building Messaging

Flowscape's cloud-based secure communication solution delivers geolocation based messages to all employees and visitors. Unlike mass messaging applications, our solution allows you to send specific messages to users within selected geo-fenced locations. Messages can be delivered via push notifications using the mobile data network, WiFi or SMS. The solution can be linked to your existing digital signage to display live information or urgent messages during an emergency or incident, while all content delivered is secured and fully auditable.

Flowscape enterprise solution

Combine any of our smart solutions to create the perfect digital experience across all your offices. Our multi-tenant functionality enables the booking of both your company's and shared resources in the same building, while Flowscape's Bluetooth indoor positioning solution locates colleagues even when they are on-the-go. The indoor positioning system can also be used as an inhouse Wayfinding system. We can integrate our solution with your access control system to restrict access to those who have booked a desk or a meeting. Flowscape's cloud platform is built on open-interface technology, making it seamless to integrate our solutions with your existing IT systems. Our solution experts will design the optimum solution, which not only addresses your present digital workplace requirements, but also anticipates the future needs of your business.

Contact us!

To find out more about Flowscape's solution or to request a demo, please email sales@flowscapecolutions.com

