

959 PANIGALE



Index

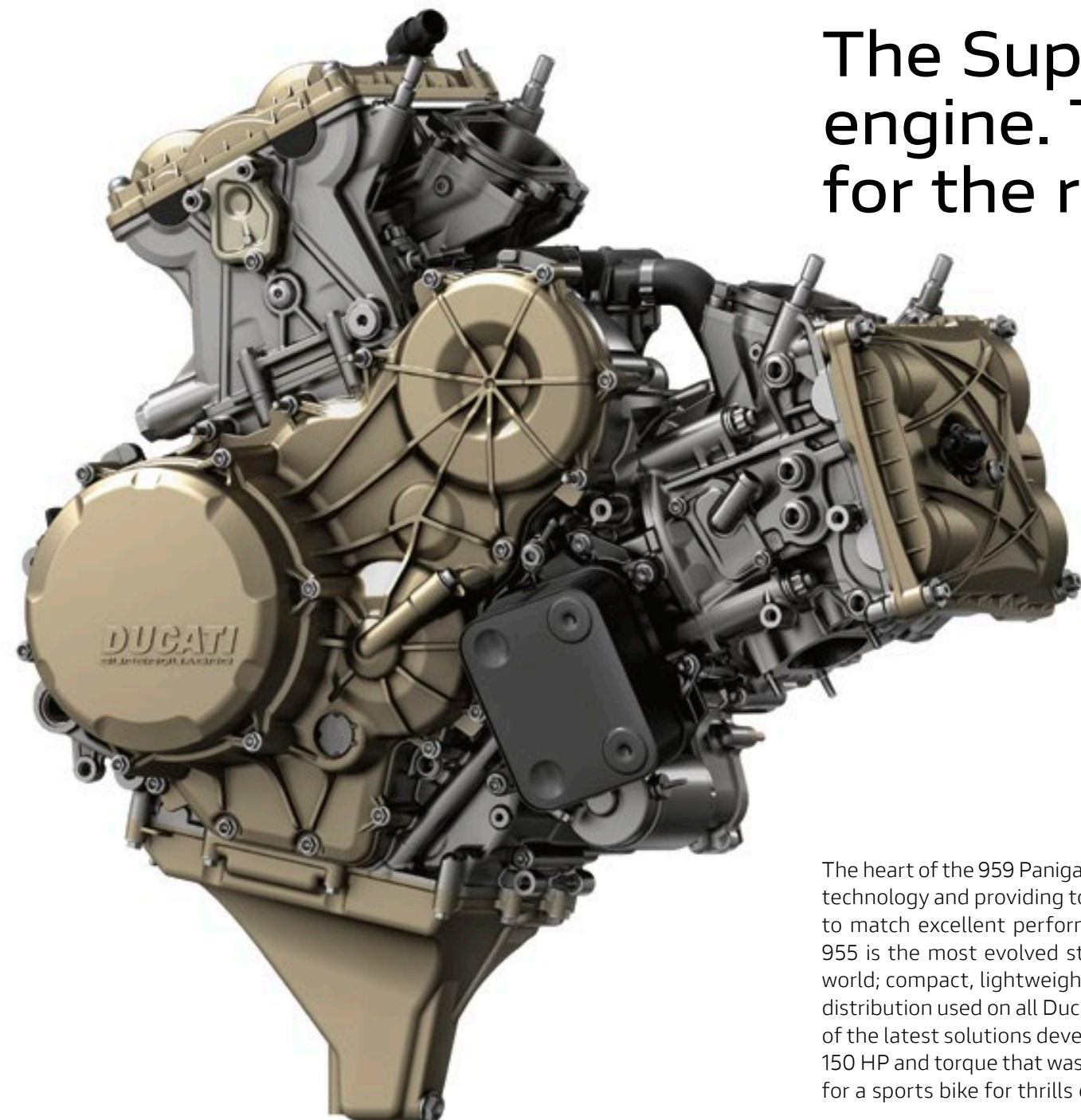
The essence of Superbike philosophy	3
The Superquadro engine. Two cylinders for the rider	5
Electronics: invisible yet effective	7
The combination of technical features and design	9
The perfect balance	15
Advanced chassis design	17
Power and control	19
959 Panigale Corse, Racing DNA	21
Safety as Standard	23
Endless excitement	25
Always by your side	27
More value to your passion	29
Technical data and equipment	31
Accessories	41
Apparel	51



The essence of Superbike philosophy

The track as a testing bench; the stopwatch has the final decision. Victories and pole positions mean only one thing: the potential to build even better road bikes; as competition and series production at Borgo Panigale go hand in hand. Technology, materials, innovative and at times “visionary” ideas are the starting point for unique motorcycles; such as the 959 Panigale that has taken the DNA and the spirit of the winning Superbikes on the track to a level of road-applicability never seen before.





The Superquadro engine. Two cylinders for the rider.

The heart of the 959 Panigale is a twin-cylinder engine with state-of-the-art technology and providing top performance. 955 cc is the ideal displacement to match excellent performance and superior usability. The Superquadro 955 is the most evolved standard production twin-cylinder engine in the world; compact, lightweight, complete with the all-essential Desmodromic distribution used on all Ducati engines, MotoGP included. It has inherited all of the latest solutions developed on the track by the Panigale SBK. Packing 150 HP and torque that was never so full and enjoyable, it is the ideal engine for a sports bike for thrills on the track and pure enjoyment on the road.





Electronics: invisible yet effective

All Ducati Superbikes have a high technological content, shared by the 959 Panigale whose electronics make it the benchmark in its category. The engine is managed by a Full Ride By Wire system with three Riding Modes (Race, Sport, Wet), that not only adjust the engine's characteristics but also change the level of support provided by the Bosch ABS, the DTC (Ducati Traction Control), and the EBC (Engine Brake Control).

These electronic support systems assure the maximum performance of the Superquadro twin-cylinder engine, while enhancing rider safety. The specific menu for each electronic control system makes it possible to set the 959 Panigale based on the driving style of each individual rider. Ducati Quick Shift provides ultra-fast gear shifting without using the clutch: the perfect final touch for its extremely high-tech electronic systems.



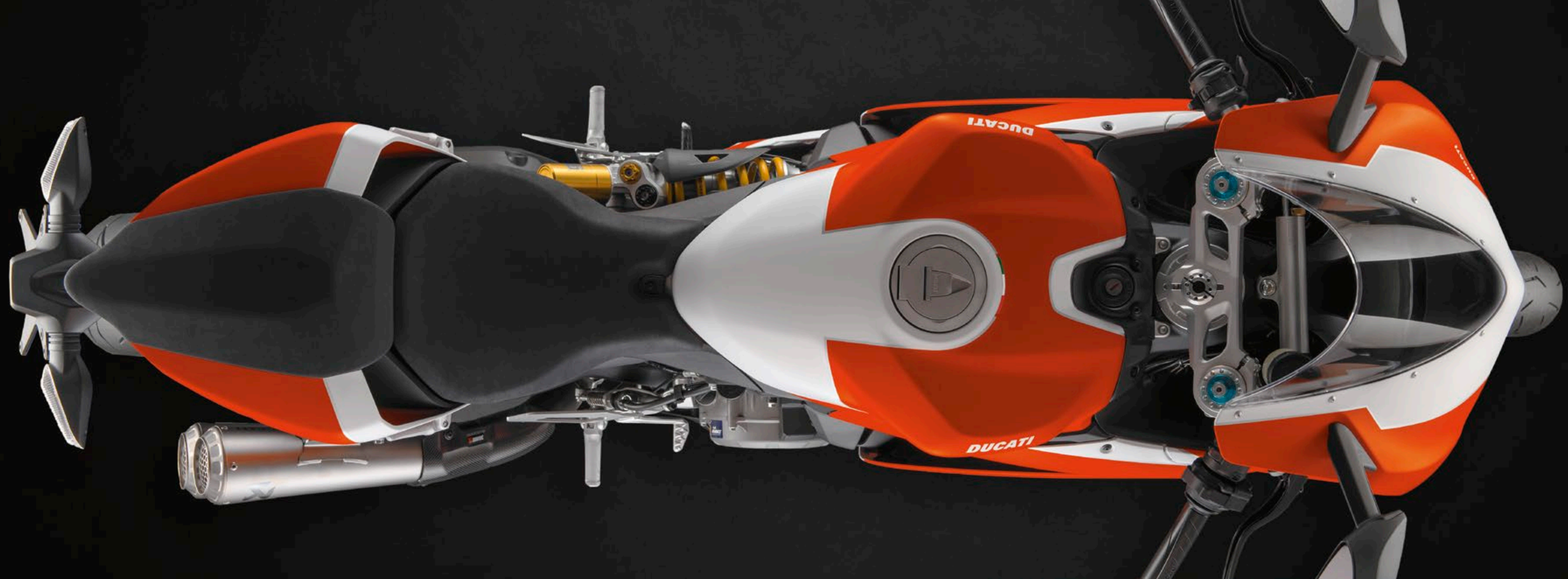


The combination of technical features and design

For the 959 Panigale, design is a fundamental and distinctive element, stemming from a tradition that has seen numerous Ducatis win some of the most prestigious design awards. The LED headlamp has a light design that is instantly recognisable; the front fairing optimises the aerodynamic protection and the airflow to the engine; the tail fairing gives the rear of the bike an even more aggressive look.









The perfect balance

Power and light weight. Performance and control. The 959 Panigale strikes the perfect balance of elements that are apparently in total contrast. The power of the 955 cc Superquadro twin-cylinder engine and the exclusive monocoque frame create a unique mix of performance and effortless handling so the rider can put his limits to the test easily and in safety.

Lightweight, easy to handle, extremely precise on the road; the superior technical features of the 959 Panigale include the Brembo Monoblock brakes with Bosch ABS, the slipper clutch, the adjustable suspensions, and all the electronics for control and handling.



Advanced chassis design



An ultra-light monocoque frame, twin-cylinder engine with supporting function and chassis design, studied to offer maximum experience for the rider. All intended to strike the ideal dynamic balance during riding, whether on the road or track. The swingarm with lowered pin and optimised wheelbase work together with the cutting edge suspensions, like the 43 mm Showa BPF fork and the Sachs monoshock, both fully adjustable.



Power and control

According to tradition, the Superquadro twin-cylinder engine mounted on the 959 Panigale is an integral part of the chassis and the Desmodromic core of the motorcycle. 150 HP at 10,500 rpm and 102 Nm torque at 9,000 rpm are Superbike specifications, manifest in the 959 Panigale in the cutting-edge chassis and a technical package that is the benchmark in its category. The DTC (Ducati Traction Control) manages the grip during acceleration, while the EBC (Engine Brake Control) works in conjunction with the slipper clutch, allowing the rear wheel not to lose adherence when leaning into the curve.





959 Panigale Corse, Racing DNA

A racing soul, two-colour livery inspired by the Desmosedici GP, with white providing the contrast for the matt red. The 955 cc Superquadro twin-cylinder engine. The type-approved Ducati Performance titanium exhaust by Akrapovič and the lithium battery that reduce the kerb weight by 2.5 Kg (4.6 lb). The 959 Panigale Corse is the maximum sports experience of the famous twin-cylinder bike from Borgo Panigale. A steering damper and a suspension calibrated for optimal racing performance, both by Öhlins, complete the componentry. State-of-the-art technology, for a more exciting driving experience than ever before.





Safety as Standard

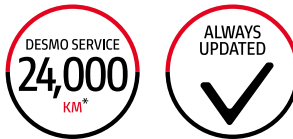


The continuous work that Ducati carries out in terms of design, research and development serves to ensure cutting-edge bikes characterised by maximum active safety levels. A commitment that involves the definition of increasingly advanced technological systems to increase the rider's level of control, like the Bosch ABS and Ducati Traction Control (DTC) systems. Equipment that optimises the bike's dynamic performance in both braking and acceleration and that offers numerous levels of adjustment with three different intervention levels for the Bosch ABS and eight for the Ducati Traction Control (DTC).



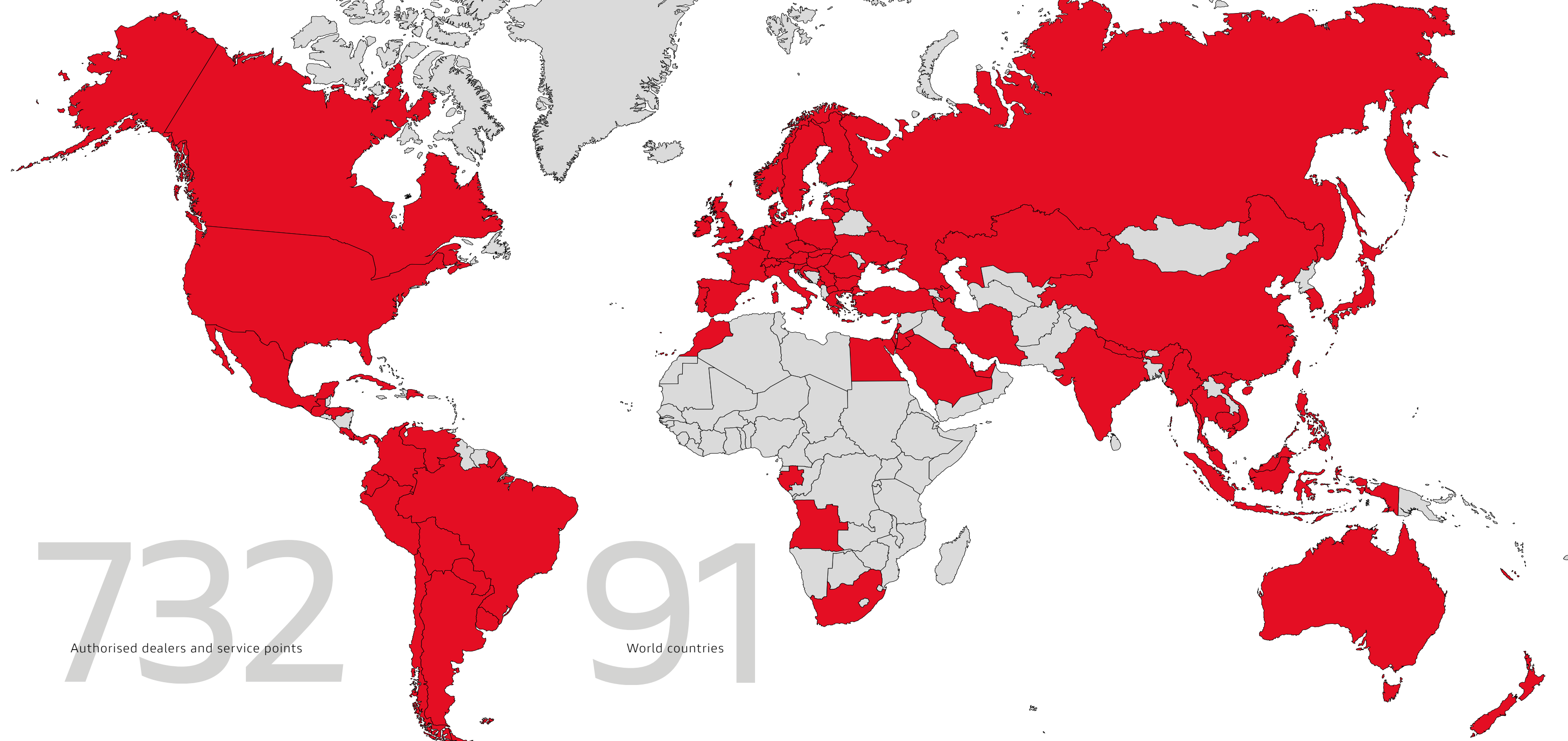
Endless excitement

In designing each bike, Ducati constantly strives to ensure maximum reliability while reducing service costs. A commitment that has seen the intervals for the main Desmo Service, in which valve clearance is checked and adjusted if necessary, extended to 24,000 km for the 959 Panigale. Even the simplest of checks, such as the Oil Service, are extended to 15,000 km or 12 months. A considerable interval for such high-performance engines, which only confirms the high quality standards adopted in terms of material selection and R&D processes. Ducati continuously invests in the technical training of its dealers. The specific skills offered by the official Ducati Service network ensure that all those operations needed to keep every Ducati in perfect condition are thoroughly executed, while advanced equipment such as the Ducati Diagnosis System allows the software on each Ducati to be updated with the latest releases, ensuring that the electronics continue to perform at the maximum level.



* equal to 15,000 miles.





732

Authorised dealers and service points

91

World countries

Always by
your side



One of Ducati's main goals is to offer every Ducatista the chance to enjoy unlimited and safe travel all over the world. To achieve this aim, Ducati offers a "fast delivery" original spares service, with delivery in 24/48 hours across 85% of the areas in which it operates. With a distribution network that covers more than 90 countries, thanks to 766 official Dealers and Service Points*, choosing a Ducati means you can travel worry-free and in total freedom, wherever the road may take you, and count on capillary support that ensures Ducati quality and professionalism is always close at hand.

*Information updated as of December 2017

More value to your passion

Ever Red

Extended Warranty

With Ever Red, the quality and reliability of the Ducati brand remain your inseparable travelling companions over time. Ever Red is the exclusive Ducati warranty extension programme. With its activation you can continue to feel protected for 12 or 24 months beyond the expiration of the Ducati Warranty (24 months). Ever Red includes roadside assistance for the entire coverage period and no mileage limits. In this way you can ride for all the kilometres you want, even abroad, enjoying your Ducati without any worries.

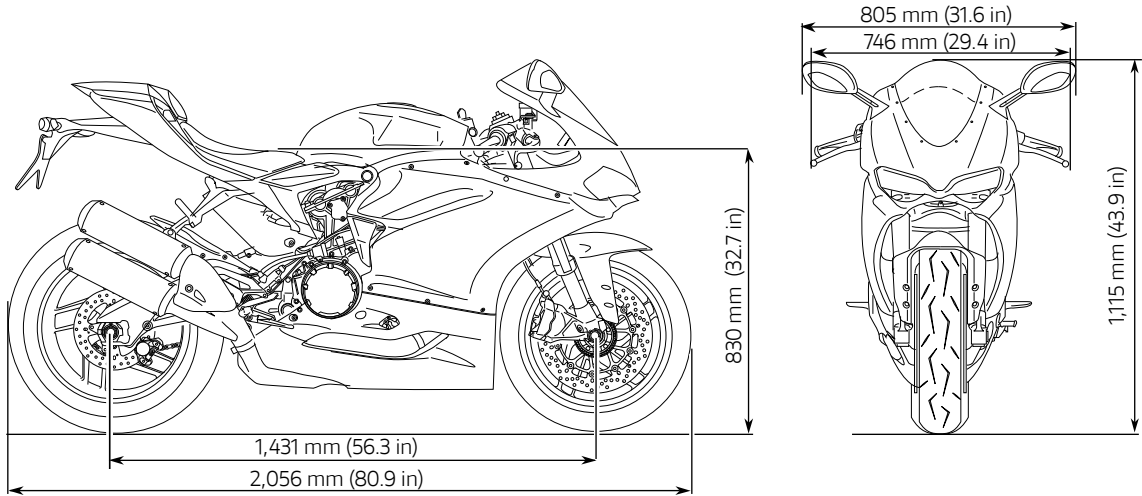
To find out if the Ever Red extension is available in your country and for further information contact your Ducati dealer or visit ducati.com.



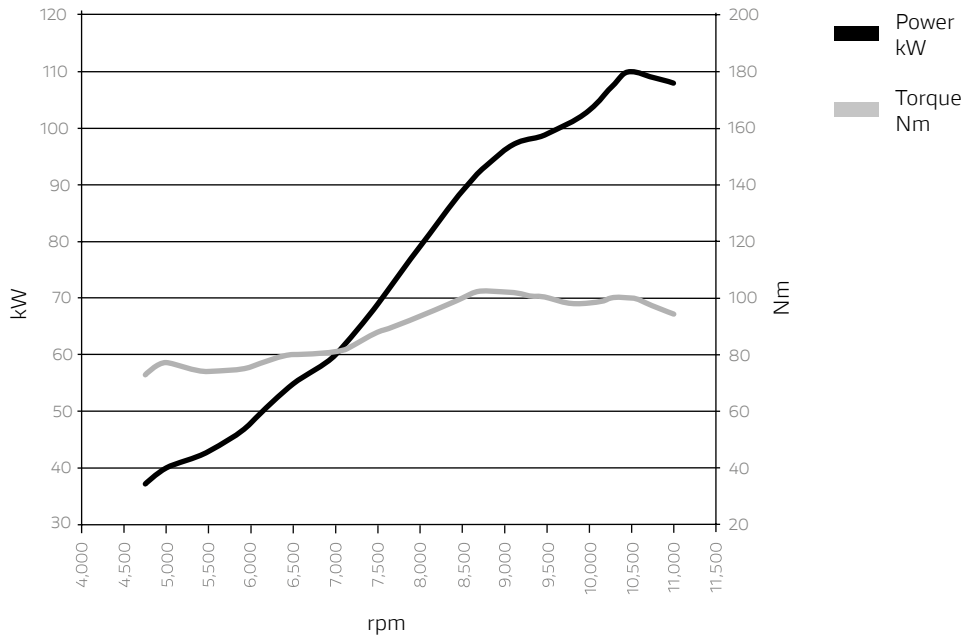


Technical data
and equipment

Dimensions



Power and torque



Engine	
Engine	Superquadro: L-twin cylinder, 4 valves per cylinder, Desmodromic distribution, liquid cooled
Displacement	955 cc
Bore X stroke	100 x 60.8 mm
Compression ratio	12.5:1
Power*	110 kW (150 HP) @ 10,500 rpm
Torque*	102 Nm (75 lb-ft) @ 9,000 rpm
Fuel Injection	Electronic fuel injection system. Twin injectors per cylinder. Full Ride-by-Wire elliptical throttle bodies
Exhaust	2-1-2 system. Stainless steel pre-silencer + twin aluminium side mufflers. 2 lambda probes and 2 catalytic converters.

Transmission	
Gearbox	6-speed with Ducati Quick Shift (DQS)
Primary drive	Straight cut gears; Ratio 1.77:1
Ratio	1=37/15 2=30/16 3=27/18 4=25/20 5=24/22 6=23/24
Final drive	Chain; Front sprocket 15; Rear sprocket 43
Clutch	Slipper and self-servo wet multiplate clutch with hydraulic control

Chassis	
Frame	Aluminium alloy monocoque
Front suspension	Fully adjustable Showa BPF fork, with 43 mm chromed inverted legs
Front wheel	10-spoke light alloy, 3.50" x 17"
Front tyre	Pirelli Diablo Rosso Corsa 120/70 ZR17
Rear suspension	Fully adjustable Sachs damper. Aluminium double-sided swingarm
Rear wheel	10-spoke light alloy, 5.50" x 17"
Rear tyre	Pirelli Diablo Rosso Corsa 180/60 ZR17
Wheel travel (front/rear)	120 mm - 130 mm
Front brake	2 x 320 mm semi-floating discs, radially mounted M4.32 Brembo Monoblock 4-piston callipers, Bosch ABS
Rear brake	245 mm disc, 2-piston calliper, Bosch ABS
Instrumentation	Full LCD display

Dimension and weights	
Dry weight	176 kg (388 lb)
Weight in running order	200 kg (440 lb)
Seat height	830 mm (32.7 in)
Wheelbase	1,431 mm (56.3 in)
Rake inclination	24°
Front wheel trail	96 mm (3.78 in)
Fuel tank capacity	17 l - 4.5 gallon (US)
Number of seats	Dual seat
Safety and technical equipment	
Bosch ABS, Ducati Traction Control (DTC), Engine Brake Control (EBC), Riding Modes	
Standard equipment	
Power Modes, Ducati Quick Shift (DQS), Steering damper, Ready for DDA + with GPS module	
Warranty	
24 months unlimited mileage	

Maintenance	
Maintenance	12,000 km (7,500 mi) /12 months
Control of valve clearance	24,000 km (15,000 mi) Desmo Service
Emissions & Consumption* *	
Standard	Euro 4
CO2 Emissions	133 g/km
Consumption	5.6 l/100 km



Equal to 15,000 miles

Kilometers refer to the first Desmo Service, i.e. when the valve clearance is checked and adjusted if necessary.

* The power/torque values indicated were measured on a static testing bench according to type-approval standards and match the data read during the type-approval tests as listed on the vehicle's log book.

** Only for countries where Euro 4 standard applies.

959 Panigale		959 Panigale Corse
Front suspension	Fully adjustable Showa BPF fork, with 43 mm chromed inverted legs	Fully adjustable TiN treated 43 mm NIX30 Öhlins fork
Rear suspension	Fully adjustable Sachs damper	Fully adjustable Öhlins TTX36 damper
Steering damper	Sachs	Öhlins
Lithium-ion battery	-	✓
Ducati MotoGP Livery	-	✓
Dry weight	176 kg (388 lb)	175.5 kg (387 lb)
Weight in running order	200 kg (440 lb)	197.5 kg (435,4 lb)



1 Öhlins steering damper

2 Adjustable Öhlins suspension calibrated for performance



3 Ducati Performance type-approved titanium exhaust by Akrapovič

959 PANIGALE

Colour: Arctic White Silk



959 PANIGALE

Colour: Ducati Red



959 PANIGALE
CORSE

Colour: Ducati MotoGP Livery





Accessories

Sport Pack



Carbon fibre cover for ignition key switch



Carbon cover for rear shock absorber



Carbon fibre heel guards



Billet aluminium tank filler plug



Carbon and aluminium alloy plate holder



Carbon front sprocket cover



Billet aluminium handlebar weights



Adapters for handlebar counterweights



Carbon fibre fuel tank protector



1



1

Evolution complete exhaust system in titanium



2



2

Titanium racing silencer kit



3



3

Titanium racing manifolds





1 Akrapovič approved silencers

2 Carbon fibre front mudguard

3 Carbon rear mudguard

4 Carbon guard for generator casing

5 Carbon cover for rear shock absorber

6 Carbon fibre covers for air intake conveyors

1 Carbon fibre heel guards

2 Carbon shark fin chain guard

3 Passenger seat cover

4 Ducati Corse oversized windscreen

5 Mirror hole caps

6 Carbon and aluminium alloy plate holder

This product is designed exclusively for race bikes ridden on a closed racetrack. Its use on public roads is forbidden by law.



2 Radiator protective grill



3 Raised adjustable billet aluminum rider footpeg kit



1 Handlebar counterweights



4 Brake fluid reservoir



5 Clutch fluid reservoir



6 Brake lever protection



1 Clutch lever



2 Brake lever



3 Set of footpegs



4 Anti-theft kit



5 Pair of LED turn indicators



6 Soft bag in technical fabric



1 Racing seat in technical fabric

3 Passenger comfort seat



2 Rider comfort seat

Other accessories for your 959 Panigale

Fairing upgrade kit



Racing tail fairing kit



Rear paddock stand for double-sided swinging arm

Lower fairings

Aluminum front axle protectors

Reverse gear change control wiring

Panigale Paddock bike cover

Transparent tank cover



Key to symbols



This product is designed exclusively for race bikes ridden on a closed racetrack. Its use on public roads is forbidden by law.



Accessory realized in cooperation with Ducati Corse.



This accessory is not approved for road circulation.



Accessory type-approved for road use.



Type-approved silencer according to Regulation (EU) No. 168/2013 of 15/01/2013.



For racing use only. The product marked with this symbol can only be used on competition vehicles. Use outside a competition track of motorcycles equipped with this product is prohibited by law. Verify any further restrictions with the relevant race course. Motorcycles equipped with this accessory are prohibited from operating on public roads.



This accessory cannot be used/sold in Japan.



Accessory type-approved for road use in Japan.



Anodized



Matt



Tinted



Red



Black



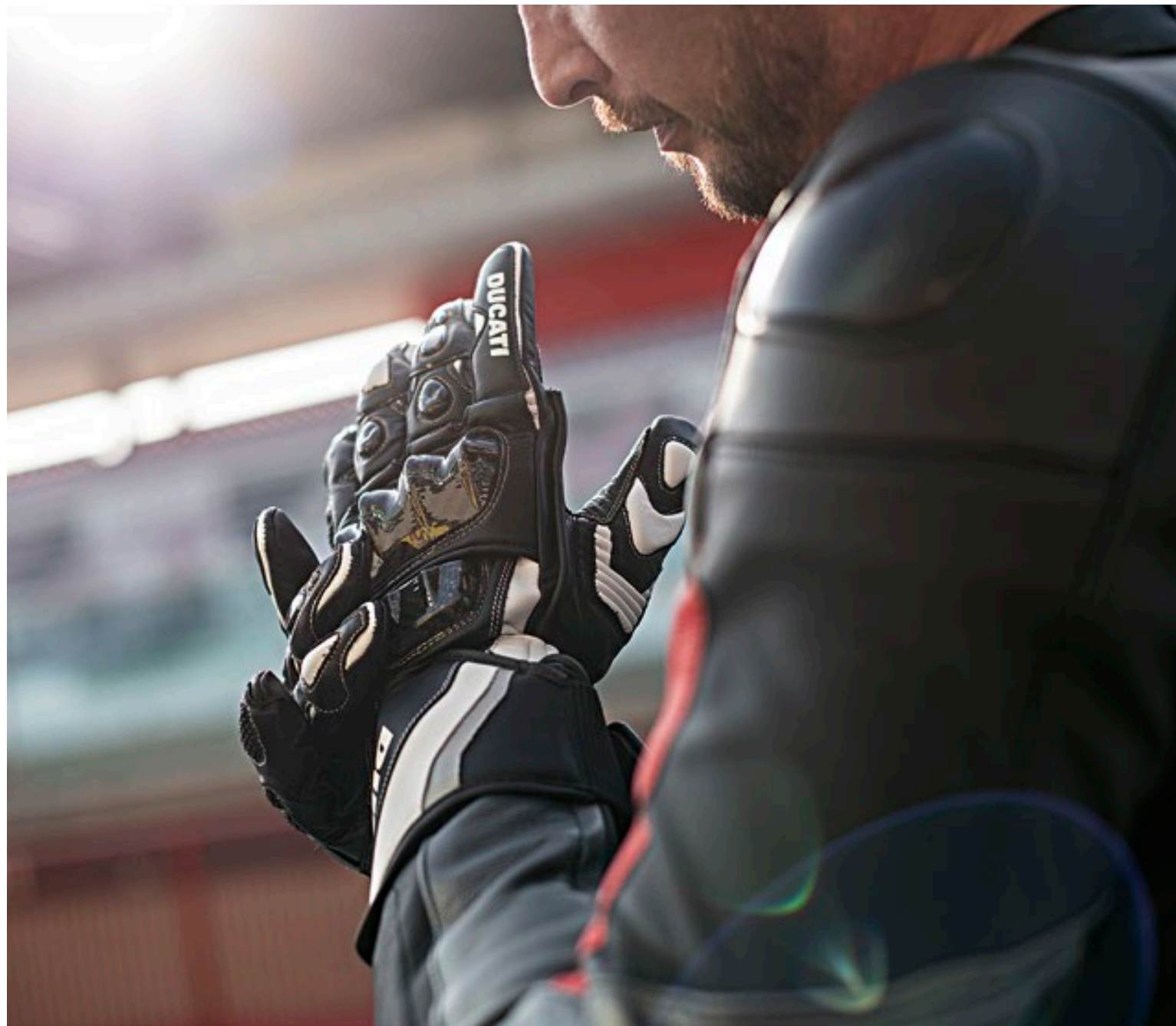
Silver



Artik White Silk

Apparel





Ducati Corse C3
Leather gloves
98104203_ black
98104216_ red

Ducati Corse C3
Racing suit
9810371_perforated

Ducati Corse C3
Two-piece racing suit
9810372_standard

For more information on the apparel collection go to a Ducati Dealership or visit the site [ducati.com](https://www.ducati.com)

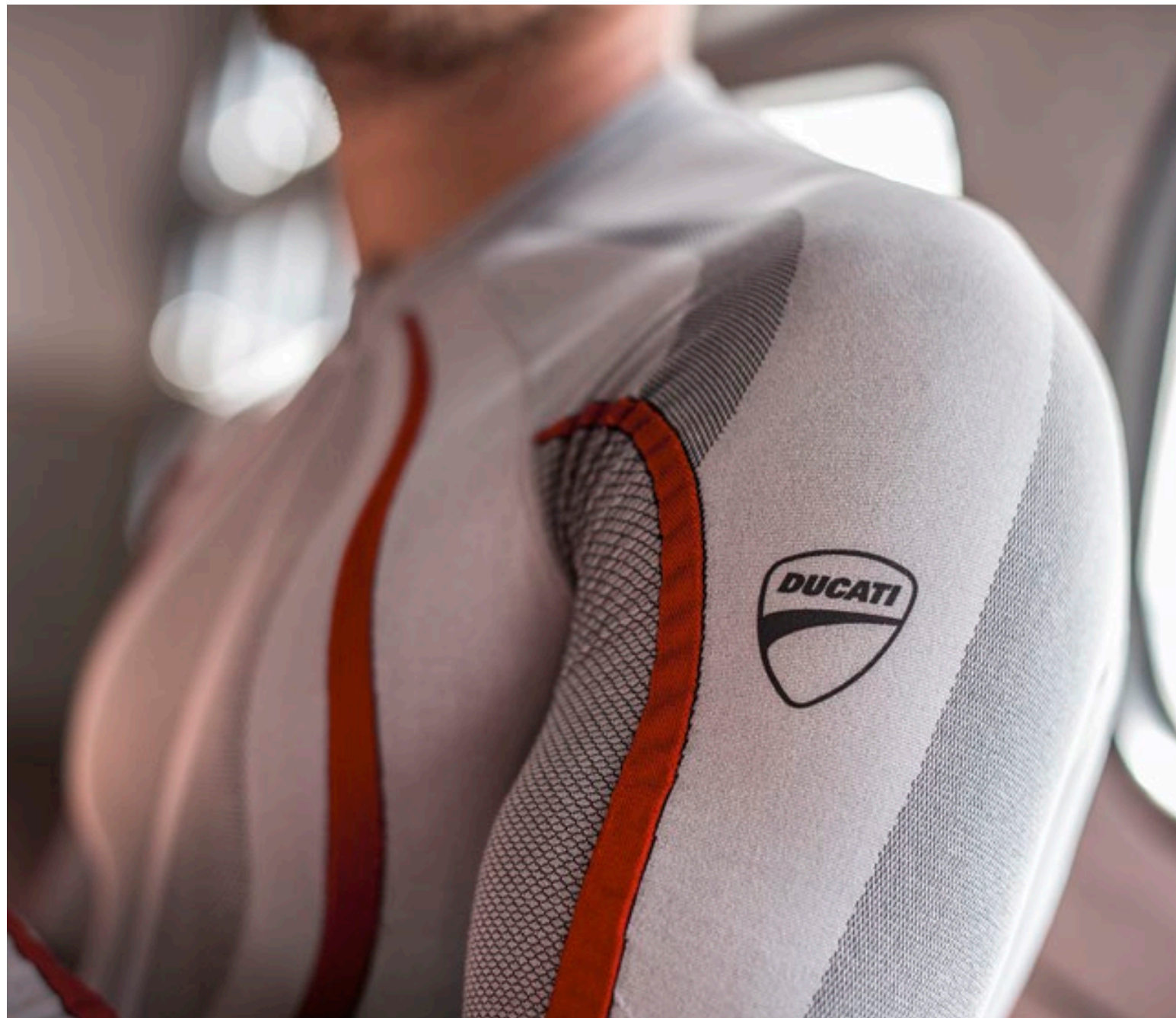




Ducati Corse K1
Kangaroo leather racing suit
9810445_perforated



Ducati Corse Speed
Full-face helmet
98104051_ECE
98104052_USA
98104053_JAP



Cool Down
Seamless undersuit
98104000_

Ducati Corse K1
Kangaroo leather racing suit
9810445_perforated

For more information on the apparel collection go to a Ducati Dealership or visit the site [ducati.com](https://www.ducati.com)





Redline T1
Trolley
981040451

Ducati Corse C3
Racing boots
9810417_



91750124ZE

Riding a motorcycle is the most exciting way to enjoy the road, and offering the utmost safety to the motorcyclist is Ducati's commitment. Ducati bikes are increasingly easy to handle, reliable and better equipped to guarantee maximum safety and enhance riding pleasure. Technical clothing is made with more and more advanced materials for adequate protection and increased visibility. The safety of motorcyclists is Ducati's commitment. For more information visit the safety section of the Ducati site (www.ducati.com).

WARNING: The photos and technical information in this catalogue may refer to prototypes subject to modifications during production and are purely for illustration and reference purposes, and are therefore not binding on Ducati Motor Holding S.p.A. Sole Shareholder Company - Company subject to the direction and coordination of AUDI AG ("Ducati"). Ducati cannot be held responsible for any print and/or translation errors. This catalogue is transnational and therefore some products may not be available and/or their features may vary in accordance with local laws. Not all colours and versions are available in each country. Ducati reserves the right to make changes and improvements to any product without obligation of prior notice or to make such changes to products already sold. Further characteristics of the products are contained in the pertinent owner's manuals. The products represented are not definitive versions and are therefore subject to significant changes at Ducati's discretion without prior notice. The photographs published in this catalogue show only professional riders under controlled street conditions. Do not attempt to imitate such riding behaviour as it could be dangerous for you or other people on the road. This catalogue, including but not limited to the trademarks, logos, texts, images, graphics and table of contents herein, constitute Ducati intellectual property, or in any event Ducati has the right to reproduce it; any reproduction, modification or other whole or partial use of the catalogue or its contents, including publication on the Internet without the prior written consent of Ducati, is prohibited.

Actual fuel consumption may vary based on many factors, including but not limited to riding style, maintenance performed, weather conditions, surface characteristics, tyre pressure, load, weight of the rider and the passenger, accessories.

Ducati indicates the dry weight of the motorcycle excluding battery, lubricants and coolants for liquid-cooled models. The weights in running order are considered with all operating fluids, standard equipment and the fuel tank filled to 90% of its useful capacity (UE regulation no. 168/2013). For more information visit www.ducati.com. Printed in December 2018.

Developed with  **Shell**
ADVANCE
RACING

Technical partner



ducati.com