

MULTISTRADA 1260





Index

Expand your comfort zone	3
Ducati Testastretta DVT	5
Innovation at the service of functionality	9
Form and function in a single concept	13
Travelling without compromise	15
Total control	17
Limitless comfort	19
Complete safety	21
Ducati Link App, excitement and control 2.0	23
To each his own configuration	25
The D air® Safety System	27
Pikes Peak. A legendary race	29
The king of every mountain	33
Safety as Standard	35
Endless Excitement	37
Always by your side	39
More value to your passion	41
Specifications and equipment	43
Accessories	59
Apparel	73

Expand your comfort zone

A new engine. Greater usability and control. The Multistrada 1260 takes you into a brand new “comfort zone”, where the pleasure of driving becomes a sense of well-being, travelling is turned into an experience and performance becomes pure emotion.

With its larger displacement, the Multistrada 1260 offers higher torque values at low engine speeds and greater ease of use, so you can master any situation, on any road.

Greater control: technology applied to riding dynamics allows you to get the most out of the features of the new Multistrada 1260, with all the necessary safety.

Flowing lines: the care and precision with which each detail is designed give the Multistrada 1260 a unique personality.

Frame, engine, suspension and electronics have all been updated and improved. More stable, more intuitive in its approach, more exciting than ever, whether with a single rider or with passenger and luggage. The new Multistrada 1260 is a project intended to create an even more intense bond between man and motorcycle, raising riding to a superior level of comfort.



Ducati Testastretta DVT

Ducati Testastretta DVT (Desmodromic Variable Timing): 1,262 cc revolutionises the very concept of the twin-cylinder engine, thanks to its 158 HP power at 9,500 rpm and 13.2 kgm torque at 7,500 rpm. The Ducati Testastretta DVT twin-cylinder engine makes excellent torque delivery even at low engine speeds, one of its many strengths. You can feel the thrust the moment you open the throttle, along with the certainty that breathtaking performance and absolute ease of control are always at your fingertips.

The Ducati Testastretta DVT's strength lies in its use of refined design and state-of-the-art technology. Its electronics, for instance, contribute to the generous torque delivery, with higher performance than ever before. Simply consider the fact that 85% of maximum torque is already available at just 3,500 rpm. The result? Pure riding pleasure.





More technology means control is smoother and easier. The Ducati Testastretta DVT twin-cylinder engine uses Desmodromic Variable Timing to control the intake and the exhaust valves, so as to offer the rider optimised power delivery and torque at all times. It provides all of the immediacy guaranteed by Ride By Wire, which has been updated to make it even more responsive and progressive. It provides the characteristic versatility of the four Riding Modes, which determine specific power

and torque curves. It provides the comfort and sporty spirit of the Ducati Quickshift up/down system (standard on the S, Pikes Peak and S D [air® versions) for changing gears. Riding the new Multistrada 1260, accompanied by the characteristic throb of its twin-cylinder engine, is to make the most of Ducati technology, adventuring into hitherto unexplored vistas of comfort, riding pleasure and travel quality.



Innovation at the service of functionality

Being in your comfort zone means being able to customise the personality of your Multistrada 1260 to fit your personal needs, sensibilities and attitude. This is made possible thanks to the four Ducati Riding Modes, Touring, Sport, Enduro and Urban. The Riding Modes determine the motorcycle's dynamic behaviour through extensive interaction with the Cornering ABS, traction control (Ducati Traction Control), front wheel lift control (Ducati Wheelie Control) and the power delivery and torque curves. In the S and S D|air® versions, the adjustment of the Ducati Skyhook Suspension (DSS) Evo has been changed, adapting performance in response to different riding and load conditions (by means of the monoshock spring preload) or simply based on the rider's choice at that moment. That's not all: each Riding Mode allows the rider to set up specific individual parameters, making it possible to create profiles that are even more personalised. It's all about riding pleasure, whether alone or with a passenger; either in the city or on unsurfaced roads, when travelling or when you just want to experience the curves.





Form and function in a single concept

Design and functionality. Performance and style. Comfort and beauty. The Multistrada 1260 captivates with its original lines, making it recognisable at a glance. Design research has allowed us to achieve an even more recognisable and sporty design, while simultaneously improving ergonomics for rider and passenger. The special care put into the seat details, the new exhaust system, the wheels designed especially for this model together with those of the Pikes Peak version: all of these elements go to reinforce the identity of the new Multistrada 1260, as does the Ducati Testastretta DVT engine, whose value is both technical and aesthetic.



Travelling without compromise

Thanks to continuous technological development and the use of the highest-quality materials, the Multistrada 1260 offers longer maintenance service intervals, so all you have to do is climb aboard and enjoy the ride. An oil change is required just every 15,000 kilometres, and twice that (30,000 km) before each Desmo Service – the main maintenance visit, when the valve clearance is checked and, if necessary, set. This is just one more way that the new Multistrada 1260 expresses its desire to take on all the challenges of the journey, without compromise.





Total control

The chassis of the Multistrada 1260 is characterised by the typical Ducati tubular steel trellis frame, with aluminium alloy lateral subframes to complete the lower part of the chassis, as well as a single-sided swingarm. The suspension is adjustable, with semi-active electronic control provided by the Ducati Skyhook Suspension (DSS) Evo system, giving the S and S D|air® versions added value. The DSS Evo adjusts damping to keep the pitch as neutral and balanced as possible during every stage of your ride, including during acceleration and deceleration. The new single-sided swingarm is 48 mm longer, so as to improve traction and stability in all riding conditions. The geometry up front has been revised for the same reason, and the wheelbase lengthened to 1,585 mm.

The brake system is state-of-the-art in terms of both performance and ease of use. Its principal feature is its pair of 330-mm front discs with Brembo M50 monoblock calipers and radial pump, featured on the S, S D|air® and Pikes Peak versions. Its Bosch ABS 9.1 ME Cornering system provides braking control in to corners, guaranteeing safety and effectiveness. Our quest for improved ergonomics for rider and passenger has touched on everything, from the special seat materials to the revised grab handles and new rearview mirrors. To what purpose? Riding comfort and safety.

Limitless comfort

Excellent protection from the wind, greater stability and optimised ergonomics for rider and passenger. Comfort is much more than just a design goal for the new Multistrada 1260. The new Hands-Free ignition system (without a mechanical key), and the improved Ride By Wire system, now more accurate and easier to use, all contribute to its greater comfort. Adjustable suspension makes it possible to adapt fork and damper response to riding conditions, while the S and S D|air® versions offer the opportunity to take advantage of the semi-active control offered by DSS Evo (Ducati Skyhook Suspension Evo) technology.

The new heated grips provide valuable additional comfort in low temperatures or poor weather conditions. On the S, S D|air® and Pikes Peak versions, the Full LED headlight with Ducati Cornering Lights (DCL) functionality provides optimal road surface illumination based on the lean angle detected by the inertial platform. Last but not least, the convenient Cruise Control, activated with a simple push of a button.





Complete safety

The new TFT display (standard on the S, S Dlair® and Pikes Peak versions) is not only brighter, and therefore easier to read in direct sunlight, but it is also more user-friendly, thanks to a brand new graphic set-up and menu layout which make the available information even easier to access. The TFT display and handlebar controls, with left-handlebar buttons revised for easier use, provide the interface between rider and motorcycle, allowing you to get the most out of your bike's wealth of electronics, now improved and enhanced. The interface can be personalised based on the chosen Riding Mode and on rider preferences.

The new Multistrada 1260 uses the Bosch IMU inertial platform to get the most out of the bike's chassis design, for an easy and exciting riding experience. A broad framework of services is available to assist the rider, from Ducati Traction Control (DTC) to the Bosch 9.1 ME Cornering ABS, which together make up the Ducati Safety Pack (DSP); from the riding comfort offered by Cruise Control to the rider-settable 8-level Ducati Wheelie Control (DWC) system; from the Ducati Quickshift up/down (standard on S, S Dlair®, Pikes Peak) to the Vehicle Hold Control (VHC) system, which assists with restarts and is standard on all versions. Turn indicators have also been updated, and now feature an auto-off feature triggered by lean angle or after covering a certain distance, as well as new LED rear turn indicators. The Ducati Multimedia System (DMS) allows you to make or receive calls, receive text message notifications or play music using your smartphone, for rider and passenger. Helping you stay connected and informed, to the beat of your songs.

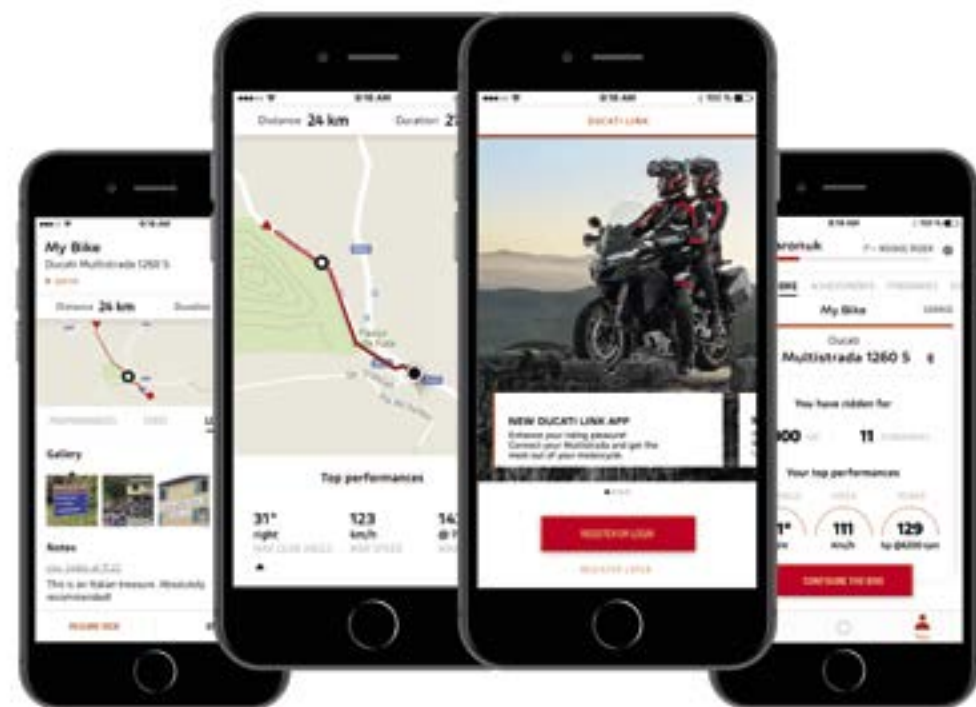


Ducati Link App, excitement and control 2.0

Enhance your riding pleasure and get the most out of your motorcycle. With the Ducati Link App, all of this is possible. The new application available for the new Multistrada 1260 is designed for the purpose of offering the rider a more complete and engaging experience. Working in harmony with your motorcycle has never been so easy. Available for iOS and Android smartphones, Ducati Link App allows you to record performance data ranging from speed and power to lean angle, fuel consumption and much more. You can also set the Riding Mode and numerous other parameters directly from your smartphone using a Bluetooth® connection. Maintenance is also made easier thanks to information and notifications on scheduled maintenance intervals and the presence of any abnormal operation. In addition, helpful information and the ability to contact a dealer directly are provided.

With the new app for the Multistrada 1260, the riding experience also offers endless exciting challenges. When riders reach different goals set by the application, Ducati Link App “rewards” them with prizes for each result achieved.

Opportunities to interact with the community have also multiplied. Ducati Link App lets you record your ride itinerary and share it with other Ducati enthusiasts who subscribe to the app. This offers a unique source of inspiration for future journeys, as well as a way to discover new and exciting travel routes, meet new friends and organise events and rallies. All of this can be shared on social networks at any time.





To each his own configuration

Personalising your bike with our accessories catalogue is the easiest way to make the Multistrada 1260 into “your” Multistrada 1260 and to emphasise this model’s natural versatility. The availability of specific accessories packages inspired by the four Riding Modes enhances the possibilities for personalisation: in keeping with the different engine and electronic control characteristics provided by each Riding Mode, the accessory packages (Touring Pack, Sport Pack, Enduro Pack and Urban Pack) allow riders to create truly unique riding set-ups of their own.

Each pack comes with specific accessories, designed and developed directly by Ducati to guarantee performance, comfort, functionality and style. For those who refuse to settle for or who are always on the look out for new roads to explore, there’s the possibility to create new combinations based on your personal taste and the bike’s intended use. You can make it more sporty or more practical for urban use. It can be perfect for unsurfaced roads or for touring, for riding alone or with a passenger.

The D|air® Safety System



The Multistrada 1260 S D|air® offers the rider the exclusive protection of the D|air® system, developed by Dainese. The system activates just 45 milliseconds after impact, due to its complete integration with the motorcycle. Sensors measure the motorcycle's deceleration and send the data to the control unit, where an algorithm is triggered which detects a dangerous scenario and proceeds to inflate the Ducati D |air® jacket airbag, a revolution in safety for the rider and passenger.

0.005 SEC.

The front wheel sensor begins to measure deceleration

0.020 SEC.

Inflation begins upon detection of an accident



0.001 SEC.

Frontal impact
Initial impact of front wheel against an obstacle

0.012 SEC.

The algorithm detects a collision

0.045 SEC.

Inflation complete





Pikes Peak. A legendary race.

Pikes Peak, the race to the clouds. A course beloved of racing enthusiasts, Pikes Peak has seen car and motorcycle lovers alike race each other along its 156 curves since 1916. It is a route that is unique for its difficulty and pathos, set against the stunning background of Colorado's Rocky Mountains (USA). Ducati is dedicating a version of its new Multistrada 1260 to this race, which is unique not only for its difficulty and race conditions – the route winds for 12.42 miles, from 2,800 to 4,300 metres of altitude – but also in terms of stress put on the engines, which are forced to deal with the lack of oxygen that is inevitable at high altitudes. The Multistrada has triumphed three times at Pikes Peak.





The king of every mountain

The new Multistrada 1260 Pikes Peak was developed based on the successes achieved in the “Race to the Clouds”. It is equipped with the same abundance of advanced electronics as the S version, with many components that are specific to this model, such as the completely adjustable Öhlins fork and damper – which, with their traditional gold finish, are recognisable at a glance. The newly designed wheels, dedicated exclusively to the new Multistrada 1260 Pikes Peak, are especially light due to the forging process used.

The “Ducati Performance by Termignoni” type-approved exhaust gives the motorcycle a distinctly sporty character, as do the numerous components in carbon fibre: the low windscreen, the front mudguard, the air-intake covers and the Hands-Free system cover. The new Multistrada 1260 Pikes Peak is extremely sporty and immediately recognisable, thanks not only to its dedicated livery of white stripes on a red background, but also to details like the anodised black passenger footpegs and engine guard.



Safety as Standard



The continuous work that Ducati carries out in terms of design, research and development serves to ensure cutting-edge bikes characterised by maximum active safety levels. A commitment that involves the definition of increasingly advanced technological systems to increase the rider's level of control, such as the Ducati Safety Pack (DSP) that, for Multistrada 1260, includes Bosch 9.1MP ABS and Ducati Traction Control (DTC). Equipment that optimises the bike's dynamic performance in both braking and acceleration and that offers numerous levels of adjustment with three different intervention levels for the Bosch 9.1MP ABS and eight for the Ducati Traction Control (DTC).



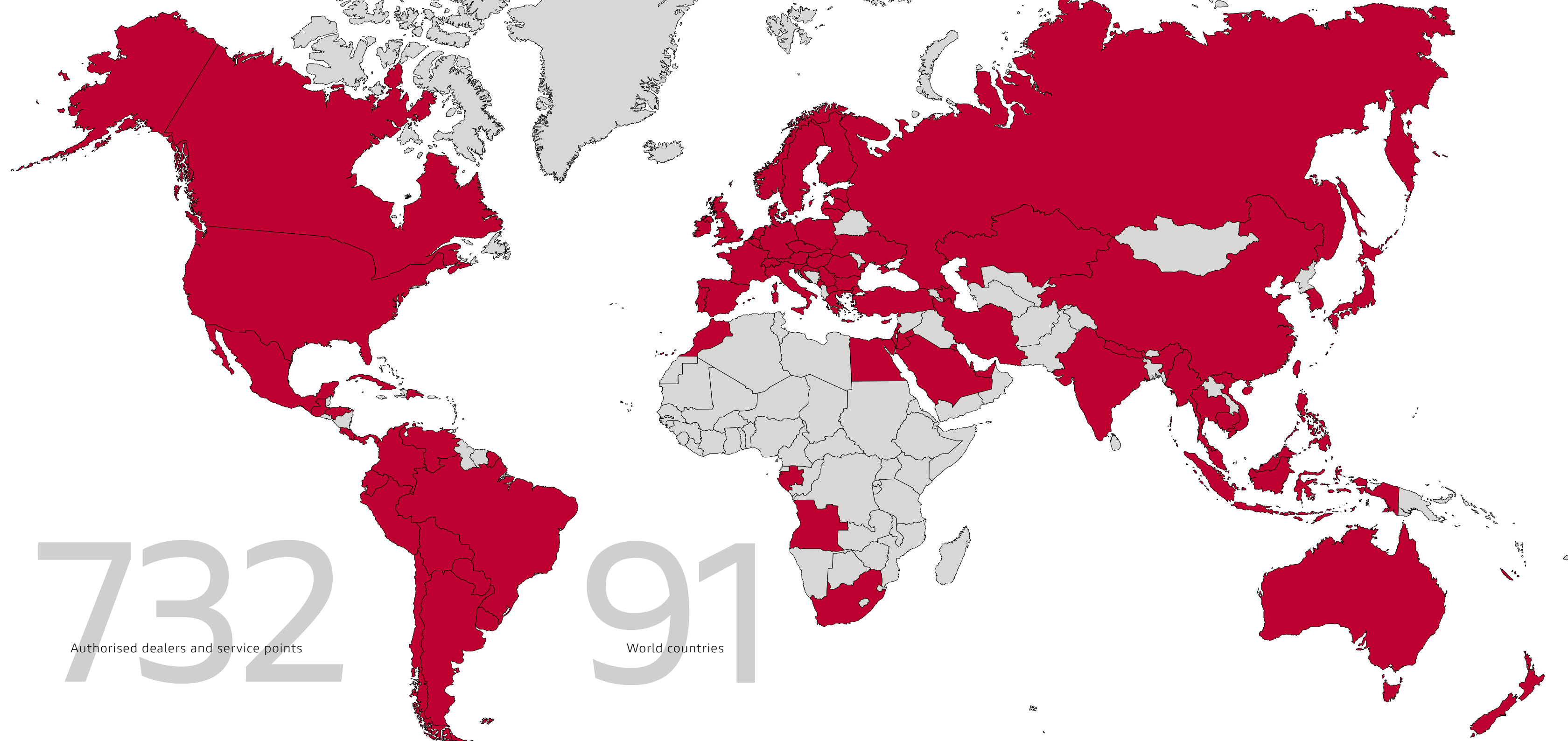
Endless Excitement

In designing each bike, Ducati constantly strives to ensure maximum reliability while reducing service costs. A commitment that has seen the intervals for the main Desmo Service, in which valve clearance is checked and adjusted if necessary, to be extended to 30,000 km for the Multistrada 1260. Even the simplest of checks, such as the Oil Service, are extended to 15,000 km or 12 months. A considerable interval for such high-performance engines, which only confirms the high quality standards adopted in terms of material selection and R&D processes. Ducati continuously invests in the technical training of its dealers. The specific skills offered by the official Ducati Service network ensure that all those operations needed to keep every Ducati in perfect condition are thoroughly executed, while advanced equipment such as the Ducati Diagnosis System allows the software on each Ducati to be updated with the latest releases, ensuring that the electronics continue to perform at the maximum level.



* equal to 18,000 miles.





732

Authorised dealers and service points

91

World countries

Always by
your side



One of Ducati's main goals is to offer every Ducatista the chance to enjoy unlimited and safe travel all over the world. To achieve this aim, Ducati offers a "fast delivery" original spares service, with delivery in 24/48 hours across 85% of the areas in which it operates. With a distribution network that covers more than 90 countries, thanks to 766 official Dealers and Service Points*, choosing a Ducati means you can travel worry-free and in total freedom, wherever the road may take you, and count on capillary support that ensures Ducati quality and professionalism is always close at hand.

*Information updated as of December 2017



More value to your passion

Ever Red

Extended Warranty

With Ever Red, the quality and reliability of the Ducati brand remain your inseparable travelling companions over time. Ever Red is the exclusive Ducati warranty extension programme. With its activation you can continue to feel protected for 12 or 24 months beyond the expiration of the Ducati Warranty (24 months). Ever Red includes roadside assistance for the entire coverage period and no mileage limits. In this way you can ride for all the kilometres you want, even abroad, enjoying your Ducati without any worries.

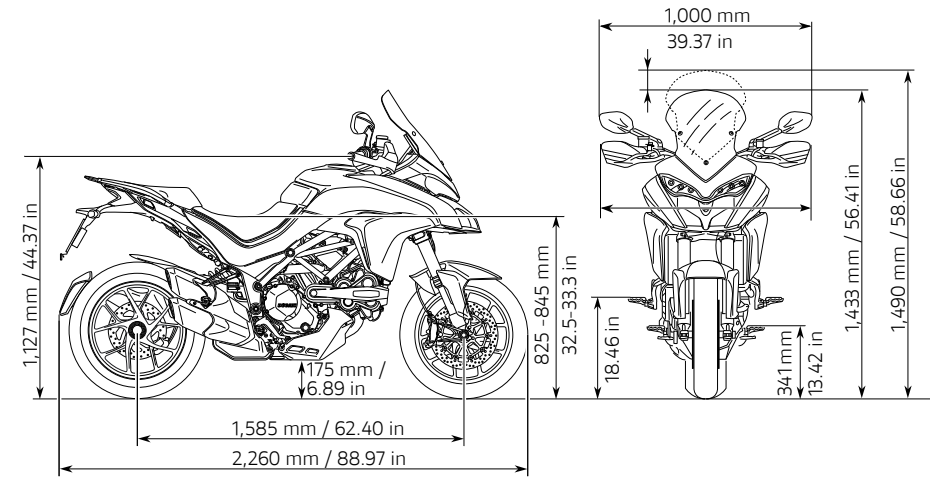
To find out if the Ever Red extension is available in your country and for further information contact your Ducati dealer or visit [ducati.com](https://www.ducati.com).

Specifications and equipment

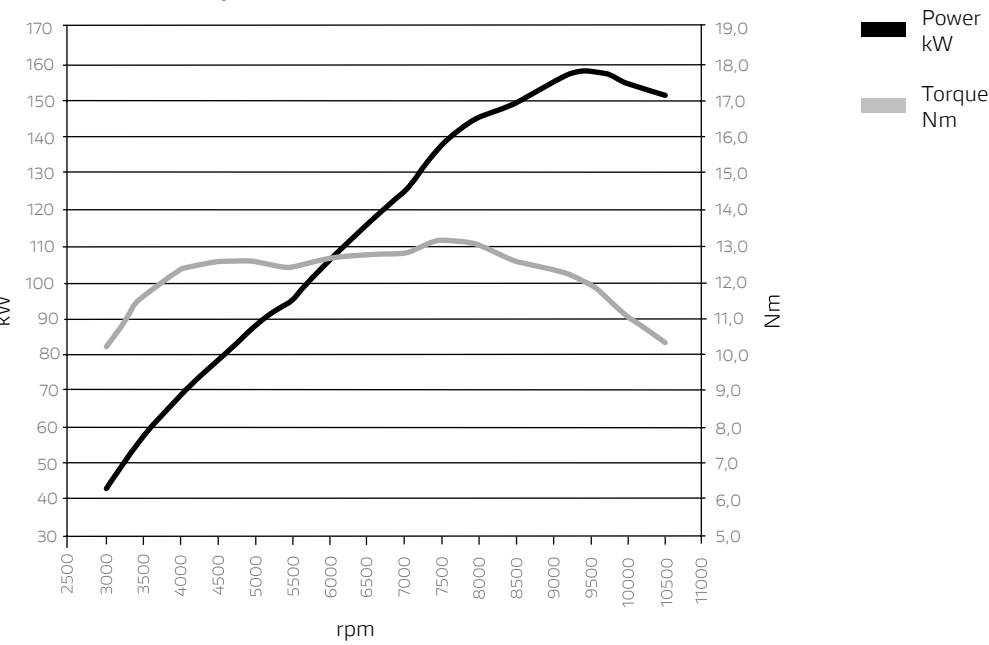


MULTISTRADA 1260

Dimensions



Power and torque



Engine	
Engine	Ducati Testastretta DVT with Desmodromic Variable Timing system, L-twin cylinder, 4 valves per cylinder, Dual Spark, liquid cooled
Displacement	1,262 cc
Bore x stroke	106 x 71.5 mm
Compression ratio	13:1
Power *	116 kW (158 HP) @ 9,500 rpm
Torque *	129 Nm (95.5 lb-ft) @ 7,500 rpm
Fuel Injection	Bosch electronic fuel injection system, elliptical throttle bodies, Ride by Wire controlled, equivalent diameter 56 mm
Exhaust	Stainless steel silencer, aluminium tail pipes; catalytic converter and 2 lambda probes
Transmission	
Gearbox	6-speed
Primary drive	Straight cut gears; ratio 1.84:1
Ratios	1=37/15 2=30/17 3=27/20 4=24/22 5=23/24 6=22/25
Final drive	Chain drive; Front sprocket 15; Rear sprocket 40
Clutch	Slipper and self-servo wet multiplate clutch with hydraulic control

Chassis	
Frame	Tubular steel trellis frame
Front suspension	Fully adjustable 48 mm upside down (USD) fork
Front wheel	Light-alloy, cast, with 5 Y-shaped spokes, 3.50" x 17"
Front tyre	Pirelli Scorpion Trail II 190/55 ZR 17
Rear suspension	Fully adjustable Sachs monoshock with progressive linkage. Remote spring preload adjustment. Single-sided aluminium swingarm
Rear wheel	Light-alloy, cast, with 5 Y-shaped spokes, 6.00" x 17"
Rear tyre	Pirelli Scorpion Trail II 190/55 ZR 17
Wheel travel (front/rear)	170 mm - 170 mm
Front brake	2 x 320 mm semi-floating discs, radially-mounted Brembo monoblock 4-piston calipers with Bosch Cornering ABS
Rear brake	265 mm disc, 2-piston floating caliper, Bosch Cornering ABS
Instrumentation	LCD display

Dimension and weights	
Dry weight	209 kg (461 lb)
Weight in running order	232 kg (511 lb)
Seat height	Adjustable 825 - 845 mm (32.5- 33.3 in)
Wheelbase	1,585 mm (62.4 in)
Rake	25°
Front wheel trail	111 mm
Fuel tank capacity	20 l - 5.3 gallon (US)
Number of seats	Dual seat
Safety and technical equipment	
Ducati Safety Pack (Bosch Cornering ABS + DTC), Vehicle Hold Control (VHC), Riding Modes, Power Modes, Ducati Wheelie Control (DWC)	
Standard equipment	
Cruise control, Hands-Free, Backlit handlebar switches, Auto-off indicators	
Ready for	
Ducati Quick Shift (DQS) up/down, Ducati Multimedia System (DMS), Anti-theft, Tyre-pressure monitoring system (TPMS)	
Warranty	
24 months unlimited mileage	

Maintenance	
Maintenance service intervals	15,000 km / 12 months
Valve clearance check	30,000 km (Desmo Service)
Emissions and consumption**	
Standard	Euro 4
CO ₂ Emissions	120 g/km
Consumption	5.2 l/100 km

DESMO SERVICE

30,000

KM

Equal to 18,000 miles.

Kilometers refer to the first Desmo Service, i.e. when the valve clearance is checked and adjusted if necessary.

* The power/torque values indicated were measured on a static testing bench according to type-approval standards and match the data read during the type-approval tests as listed on the vehicle's log book.

** Only for countries where Euro 4 standard applies.

MULTISTRADA
1260S

Multistrada 1260		Multistrada 1260 S
Gearbox	6-speed	6-speed with Ducati Quick Shift (DQS) up/down
Front suspension	Fully adjustable upside down (USD) 48 mm fork	Fully adjustable 48 mm Sachs USD fork, hydraulic brake in extension and compression, electronically controlled with Ducati Skyhook Suspension (DSS) Evo
Rear suspension	Fully adjustable Sachs monoshock with progressive linkage. Remote spring preload adjustment. Single-sided aluminium swingarm	Progressive linkage with fully adjustable Sachs monoshock, electronically controlled with Ducati Skyhook Suspension (DSS) Evo. Single-sided aluminium swingarm
Front brake	2 x 320 mm semi-floating discs, radially-mounted Brembo monoblock 4-piston calipers with Bosch Cornering ABS	2 x 330 mm semi-floating discs, radially-mounted Brembo monoblock Evo M50 4-piston calipers, radial pump with Bosch Cornering ABS
Instrumentation	LCD display	Colour TFT 5" display
Dry weight	209 kg	212 kg
Weight in running order	232 kg	235 kg
Safety equipment	Vehicle Hold Control (VHC), Riding Modes, Power Modes, Ducati Safety Pack (Bosch Cornering ABS + DTC), Ducati Wheelie Control (DWC)	Vehicle Hold Control (VHC), Riding Modes, Power Modes, Ducati Safety Pack (Bosch Cornering ABS + DTC), Ducati Wheelie Control (DWC), Ducati Cornering Lights
Standard equipment	Cruise control, Hands-Free, Backlit handlebar switches, Auto-off indicators	Ducati Skyhook Suspension (DSS) Evo, Ducati Quick Shift (DQS) up/down, Cruise control, Hands-Free, Backlit handlebar switches, Ducati Multimedia System (DMS), Colour TFT Display, Full LED Headlight, Auto-off indicators
Ready for	Ducati Quick Shift (DQS) up/down, Ducati Multimedia System (DMS), Anti-theft, Tyre-pressure monitoring system (TPMS)	Anti-theft, Tyre-pressure monitoring system (TPMS)



1 Ducati Quickshift (DQS) up/down



2 Ducati Skyhook Suspension (DSS) Evo



3 New TFT 5" instrumentation display

MULTISTRADA
1260S D|air®

Multistrada 1260		Multistrada 1260 S D air®
Gearbox	6-speed	6-speed with Ducati Quick Shift (DQS) up/down
Front suspension	Fully adjustable upside down (USD) 48 mm fork	Fully adjustable 48 mm Sachs USD fork, hydraulic brake in extension and compression, electronically controlled with Ducati Skyhook Suspension (DSS) Evo
Rear suspension	Fully adjustable Sachs monoshock with progressive linkage. Remote spring preload adjustment. Single-sided aluminium swingarm	Progressive linkage with fully adjustable Sachs monoshock, electronically controlled with Ducati Skyhook Suspension (DSS) Evo. Single-sided aluminium swingarm
Front brake	2 x 320 mm semi-floating discs, radially-mounted Brembo monoblock 4-piston calipers with Bosch Cornering ABS	2 x 330 mm semi-floating discs, radially-mounted Brembo monoblock Evo M50 4-piston calipers, radial pump with Bosch Cornering ABS
Instrumentation	LCD display	Colour TFT 5" display
Dry weight	209 kg	213 kg
Weight in running order	232 kg	236 kg
Safety equipment	Vehicle Hold Control (VHC), Riding Modes, Power Modes, Ducati Safety Pack (Bosch Cornering ABS + DTC), Ducati Wheelie Control (DWC)	Vehicle Hold Control (VHC), Riding Modes, Power Modes, Ducati Safety Pack (Bosch Cornering ABS + DTC), Ducati Wheelie Control (DWC), Ducati Cornering Lights
Standard equipment	Cruise control, Hands-Free, Backlit handlebar switches, Auto-off indicators	Ducati Skyhook Suspension (DSS) Evo, Ducati Quick Shift (DQS) up/down, Cruise control, Hands-Free, Backlit handlebar switches, Ducati Multimedia System (DMS), Colour TFT Display, Full LED Headlight, Auto-off indicators
Ready for	Ducati Quick Shift (DQS) up/down, Ducati Multimedia System (DMS), Anti-theft, Tyre-pressure monitoring system (TPMS)	D air® System, Anti-theft, Tyre-pressure monitoring system (TPMS)



1 Ready for D|air® system

2 330 mm front brakes with M50 calipers (also available on the Multistrada 1260 S)



3 Full LED Headlight with Ducati Cornering Lights (DCL) (also available on the Multistrada 1260 S)

MULTISTRADA
1260 PIKES PEAK

Multistrada 1260		Multistrada 1260 Pikes Peak
Exhaust	Stainless steel silencer, aluminium tail pipes; catalytic converter and 2 lambda probes	Stainless steel silencer, Termignoni carbon fibre tail pipe; catalytic converter and 2 lambda probes
Gearbox	6-speed	6-speed with Ducati Quick Shift (DQS) up/down
Front suspension	Fully adjustable upside down (USD) 48 mm fork	Fully adjustable 48 mm upside down (USD) Öhlins fork
Front wheel	Light-alloy, cast, with 5 Y-shaped spokes, 3.50" x 17"	Forged aluminium alloy, with 3 Y-shaped spokes, 3.50" x 17"
Rear suspension	Fully adjustable Sachs monoshock with progressive linkage. Remote spring preload adjustment. Single-sided aluminium swingarm	Fully adjustable Öhlins TTX36 monoshock with progressive linkage. Single-sided aluminium swingarm
Rear wheel	Light-alloy, cast, with 5 Y-shaped spokes, 6.00" x 17"	Forged aluminium alloy, with 3 Y-shaped spokes, 6.00" x 17"
Front brake	2 x 320 mm semi-floating discs, radially-mounted Brembo monoblock 4-piston calipers with Bosch Cornering ABS	2 x 330 mm semi-floating discs, radially-mounted Brembo monoblock Evo M50 4-piston calipers, radial pump with Bosch Cornering ABS
Instrumentation	LCD display	Colour TFT 5" display
Dry weight	209 kg	206 kg
Weight in running order	232 kg	229 kg
Safety equipment	Vehicle Hold Control (VHC), Riding Modes, Power Modes, Ducati Safety Pack (Bosch Cornering ABS + DTC), Ducati Wheelie Control (DWC)	Vehicle Hold Control (VHC), Riding Modes, Power Modes, Ducati Safety Pack (Bosch Cornering ABS + DTC), Ducati Wheelie Control (DWC), Ducati Cornering Lights
Standard equipment	Cruise control, Hands-Free, Backlit handlebar switches, Auto-off indicators	Ducati Quick Shift (DQS) up/down, Cruise control, Hands-Free, Backlit handlebar switches, Ducati Multimedia System (DMS), Colour TFT Display, Full LED Headlight, Auto-off indicators, type-approved Ducati Performance exhaust by Termignoni, Carbon fibre windscreen, High-performance Öhlins suspension, Carbon fibre front mudguard, Carbon fibre lateral air-intake covers, Carbon fibre Hands-Free cover
Additional equipment	-	Plexiglass windscreen
Ready for	Ducati Quick Shift (DQS) up/down, Ducati Multimedia System (DMS), Anti-theft, Tyre-pressure monitoring system (TPMS)	Anti-theft, Tyre-pressure monitoring system (TPMS)

1



1

Marchesini aluminium forged wheels

2



2

Type-approved Ducati Performance exhaust by Termignoni

3



3

High-performance Öhlins suspension

MULTISTRADA 1260

Bodywork: Ducati Red
Frame: Mineral Grey
Wheels: Black



MULTISTRADA 1260S

Bodywork: Ducati Red
Frame: Mineral Grey
Wheels: Black

Bodywork: Iceberg White
Frame: Mineral Grey
Wheels: Gold

Bodywork: Volcano Grey
Frame: Mineral Grey
Wheels: Gold



MULTISTRADA 1260S | Dair®

Bodywork: Ducati Red
Frame: Mineral Grey
Wheels: Black



MULTISTRADA 1260 PIKES PEAK

Bodywork: Pikes Peak livery
Frame: Ducati Red
Wheels: Black



Accessories



Touring Pack



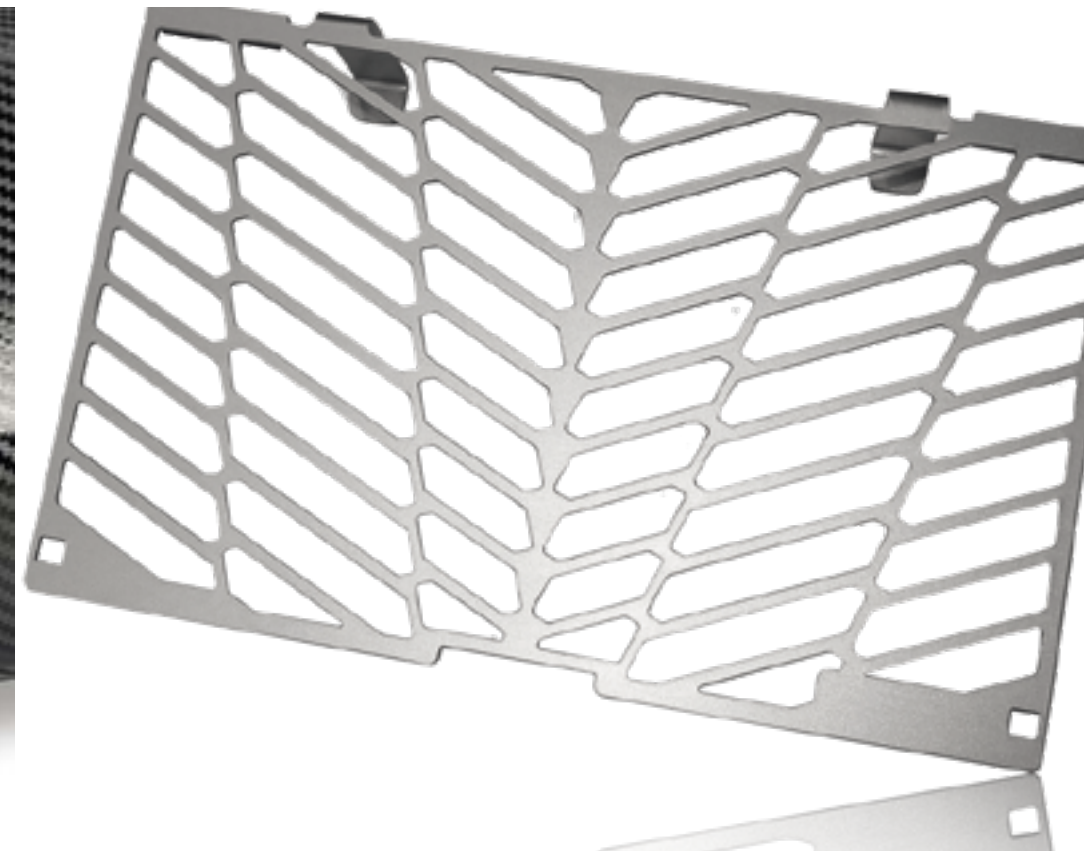
The new Multistrada 1260's innate passion for touring is accentuated by the Touring Pack, which contains the accessories best suited for taking on a mid- to long-distance trip in any sort of weather. Its 58-litre side panniers blend perfectly with the bike's design. The heated grips, with three different heat settings, are a necessary accessory when dealing with rain and low temperatures. The sturdy and easy-to-operate centre stand is convenient when stopping, especially if the bike is fully loaded.

Sport Pack



The Sport Pack is all about performance and sporty design. This pack, designed for those who wish to emphasise the sporty side of the new Multistrada 1260, comes with three accessories: the type-approved "Ducati Performance by Termignoni" exhaust, in light-weight high-end materials such as carbon fibre, which enhances the distinctive sound of the Testastretta DVT twin-cylinder engine; the brake-fluid reservoir cap in CNC machined billet light aluminium alloy; a set of components to protect the frame.

Enduro Pack



To protect the bike while simultaneously making it more functional and better suited to off-road use: that is the goal of the Enduro Pack project. The extensive extra protection it provides for the lower section of the bike means it can handle stone and dirt tracks without any risk of damage to the Testastretta DVT twin-cylinder engine. The fuel tank is protected by a sturdy structure of steel bars, while a dedicated grill protects the radiator from accidental impacts. The off-road footpegs provide the best possible grip for your boots, even in the mud. The supplementary LED lights improve visibility in all sorts of riding conditions. Lastly, the bigger kickstand base offers support even when parking on soft or loose surfaces.

Urban Pack



For those who wish to increase the new Multistrada 1260's load capacity, there's the Urban Pack, consisting of a 48-litre top case – the exact amount of space needed for two full-face helmets – and a semi-rigid tank bag with a quick-release mechanism. The tank bag features a handy transparent pocket for your smartphone, which you can charge using another accessory, also included in the Sport Pack: a USB duplicator ideal for smartphones and other devices.



1 Brake lever



2 Complete Termignoni racing exhaust system

For more information about the accessories range, technical specifications and instructions, visit a Ducati Dealer or the Accessories section of the [ducati.com](https://www.ducati.com) site.

Touring Pack*



Heated plug-&-play handgrips



Set of rigid side panniers*



Center stand

Sport Pack



Type-approved end silencer in carbon fiber



Carbon fibre front mudguard



Covers for brake and clutch fluid tanks



Enduro Pack



Engine lug made with steel tubes



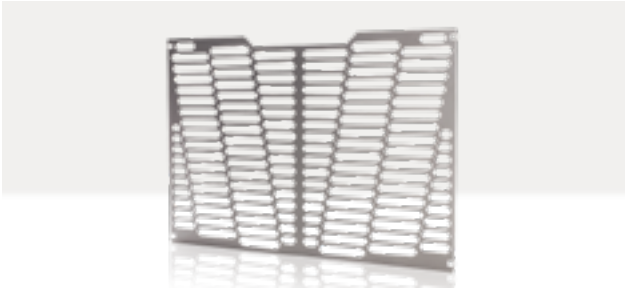
Set of additional LED headlamps



Steel footpegs



Engine cover plate



Protective mesh for water radiator



Urban Pack*



Top case kit *



Tank pocket bag



Tanklock® flange kit



Power extension cable with USB port



1 Complete racing exhaust with titanium silencer



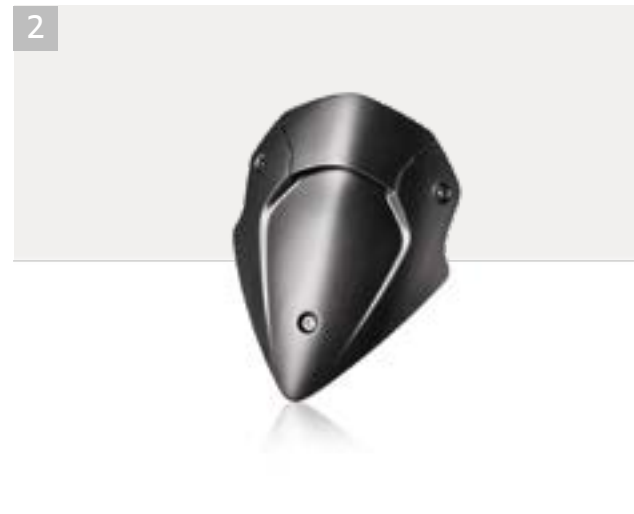
2 Type-approved end silencer in carbon fiber



3 Carbon fiber rear mudguard



1 Carbon rear splashguard



2 Carbon fiber headlight fairing



3 Carbon fiber covers for air intake conveyors



4 Carbon fiber rear chain guard




5 Carbon fiber number plate holder cover




6 Gran Turismo smoke-tinted Plexiglas windscreen.





1 Set of billet aluminium frame plugs  **A**

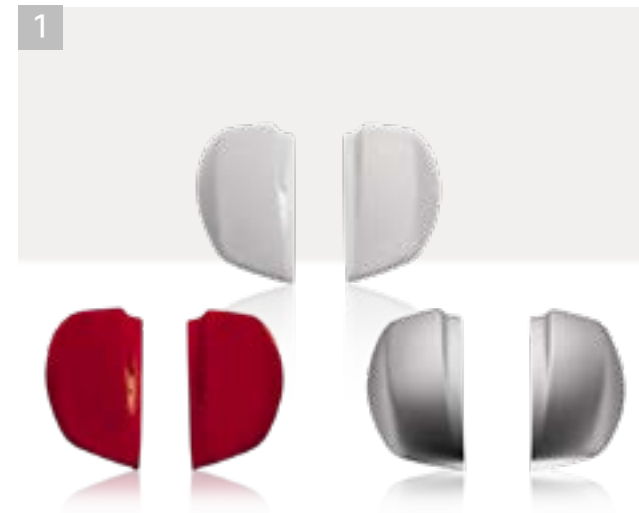
2 Billet aluminium water pump cover  **A**


3 Protective mesh for oil cooler **A**

4 Ducati Zumo 396 satellite navigator kit **EU USA**

5 Ducati Performance antitheft system

6 Set of covers for side panniers  **IW VG**



1 Set of covers for top case  **IW VG**

2 Aluminium top case **A**

3 Aluminium side panniers **A**

4 Cushion for aluminium top case

5 Set of side pannier liners

6 Top case liner **A**



1 Tank bag with tank-lock fastener

A



2 Rear bag for passenger seat or luggage rack

A



3 Rear aluminium luggage rack

A

Other accessories for your Multistrada 1260

Lowered seat

Rider comfort seat

LED turn indicators

Ducati Multimedia System

'Enduro windscreen

Carbon fuel tank protector

Indoor storage bike canvas cover

Handlebar riser

High navigator mount set

Ducati Quick Shift

Pneumatic sensors

OK

M

Liners for aluminium side panniers

Liner for aluminium top case

Steel footpegs

Carbon cover for hands-free antenna

Brake fluid reservoir

Clutch fluid reservoir

LH aluminium rear-view mirror

RH aluminium rear-view mirror

Set of footpegs

Brake lever - clutch lever

Hands-free tank filler plug

EU M

Black Red

Black Red

Black Silver

Black Silver

Black Silver

Black Silver

Key to simbols



This product is designed exclusively for race bikes ridden on a closed racetrack. Its use on public roads is forbidden by law.



This accessory is not approved for road circulation.



Accessory type-approved for road use.



USA



Europa



For racing use only. The product marked with this symbol can only be used on competition vehicles. Use outside a competition track of motorcycles equipped with this product is prohibited by law. Verify any further restrictions with the relevant race course. Motorcycles equipped with this accessory are prohibited from operating on public roads.



Type-approved silencer according to Regulation (EU) No. 168/2013 of 15/01/2013.



This Aftermarket Ducati Performance Kit is certified according the California Air Resources Board for use on public highways.



Anodized



Matt



Tinted



Transparent



Yellow



Red



Black



Silver



Iceberg White



Volcano Grey



Phantom Gray



Apparel

Ducati Apparel Collection designed by *Drudi Performance*



Tour V2

Fabric jacket

98103697_woman
98103693_man

Tour V2

Fabric trousers

98103699_woman
98103698_man

Strada C3

Fabric jacket

9810380_man
9810381_woman

Strada C3

Fabric trousers

9810382_man
9810383_woman

All Terrain

Touring-adventure boots

9810352_

Ducati Recon

Full-face helmet

98104054_ECE
98104055_USA
98104056_JAP





Strada C4
Fabric-leather gloves

98104007_

D|air® Street Ducati
Fabric vest

9810275_

Ducati Horizon
Flip-up helmet

98104200_ECE
98104201_USA





91750123ZE

Riding a motorcycle is the most exciting way to enjoy the road, and offering the utmost safety to the motorcyclist is Ducati's commitment. Ducati bikes are increasingly easy to handle, reliable and better equipped to guarantee maximum safety and enhance riding pleasure. Technical clothing is made with more and more advanced materials for adequate protection and increased visibility. The safety of motorcyclists is Ducati's commitment. For more information visit the safety section of the Ducati site (www.ducati.com).

WARNING: The photos and technical information in this catalogue may refer to prototypes subject to modifications during production and are purely for illustration and reference purposes, and are therefore not binding on Ducati Motor Holding S.p.A. Sole Shareholder Company - Company subject to the direction and coordination of AUDI AG ("Ducati"). Ducati cannot be held responsible for any print and/or translation errors. This catalogue is transnational and therefore some products may not be available and/or their features may vary in accordance with local laws. Not all colours and versions are available in each country. Ducati reserves the right to make changes and improvements to any product without obligation of prior notice or to make such changes to products already sold. Further characteristics of the products are contained in the pertinent owner's manuals. The products represented are not definitive versions and are therefore subject to significant changes at Ducati's discretion without prior notice. The photographs published in this catalogue show only professional riders under controlled street conditions. Do not attempt to imitate such riding behaviour as it could be dangerous for you or other people on the road. This catalogue, including but not limited to the trademarks, logos, texts, images, graphics and table of contents herein, constitute Ducati intellectual property, or in any event Ducati has the right to reproduce it; any reproduction, modification or other whole or partial use of the catalogue or its contents, including publication on the Internet without the prior written consent of Ducati, is prohibited.

Actual fuel consumption may vary based on many factors, including but not limited to riding style, maintenance performed, weather conditions, surface characteristics, tyre pressure, load, weight of the rider and the passenger, accessories.

The weights in running order are considered with all operating fluids, standard equipment and the fuel tank filled to 90% of its useful capacity (UE regulation no. 168/2013). For more information visit www.ducati.com. Printed in December 2018.



Developed with



Technical partner



ducati.com