



Historical Services

October 14, 2011

Mr. Arthur Cockrell
4340 SE 40th Lane
Ocala, FL
34480-4974

Re: Information Request

Dear Mr. Cockrell,

Enclosed, please find a copy of the build card and the Build Record Certificate for your 1966 Plymouth Belvedere I requested on October 5, 2011.

Due to the quality of the microfilm, we cannot guarantee the quality of the build card that has been printed for you. Every effort to print the best quality copy is done with every order. We cannot zoom in or focus any further than we have printed for you. I apologize for the inconvenience this may have caused you.

If you have any further questions, please let me know. Thank you for your order.

Regards,

A handwritten signature in blue ink, appearing to read "Danielle Szostak-Viers".

Danielle Szostak-Viers
Historical Services – Chrysler Group LLC

RL21H61179112 61 57476 AA1 LIR 12/23 163877 C1302010

PLANT NO. TRUCK SHIPPED DATE EQUIPMENT NO. SHIPPING POINT NO.

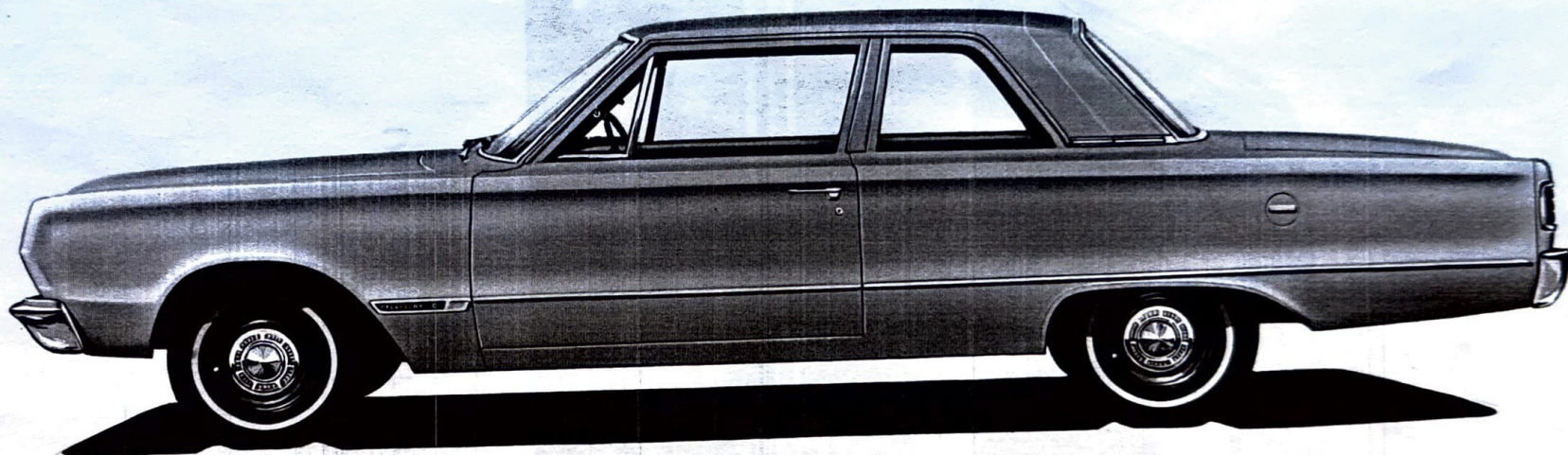
POWER EQUIPMENT

CHRYSLER MOTORS CORPORATION CAR RECORD CARD - 1966

1 2 3 4 5 6 7 8 9 10 11 12 13 14 15 16 17 18 19 20 21 22 23 24 25 26 27 28 29 30 31 32 33 34 35 36 37 38 39 40 41 42 43 44 45 46 47 48 49 50 51 52 53 54 55 56 57 58 59 60 61 62 63 64 65 66 67 68 69 70 71 72 73 74 75 76 77 78 79 80 81 82 83 84 85 86 87 88 89 90 91 92 93 94 95 96 97 98 99 100

PLANT NO.	TRUCK	SHIPPED DATE	EQUIPMENT NO.	SHIPPING POINT NO.
61	57476	12/23	AA1	LIR
1	2	3	4	5
6	7	8	9	10
11	12	13	14	15
16	17	18	19	20
21	22	23	24	25
26	27	28	29	30
31	32	33	34	35
36	37	38	39	40
41	42	43	44	45
46	47	48	49	50
51	52	53	54	55
56	57	58	59	60
61	62	63	64	65
66	67	68	69	70
71	72	73	74	75
76	77	78	79	80
81	82	83	84	85
86	87	88	89	90
91	92	93	94	95
96	97	98	99	100

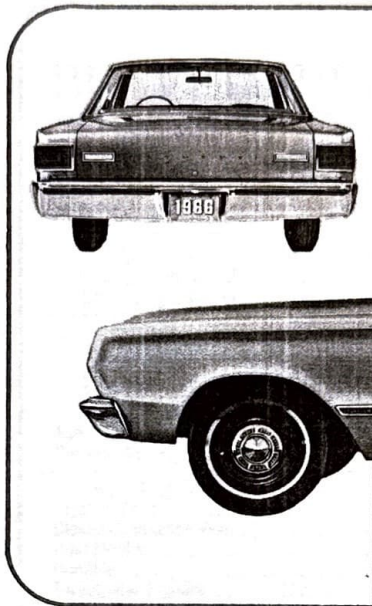
61-57476-0406 12/65



BELVEDERE I TWO-DOOR SEDAN

1966 PLYMOUTH BELVEDERE I
CHRYSLER LLC.

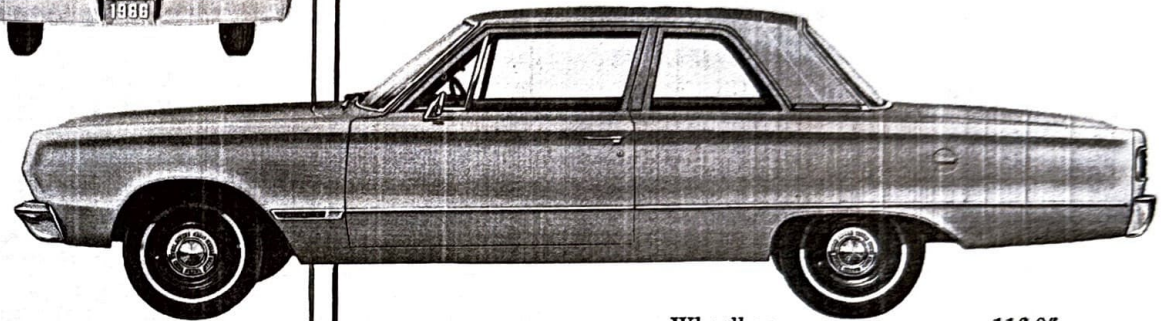
-FROM CHRYSLER CORPORATE HISTORICAL
COLLECTION



BELVEDERE I

4-DOOR SEDAN • 2-DOOR SEDAN

(See Station Wagon Section for Wagons)



Wheelbase	116.0"
Overall length	200.5"
Overall width	75.5"

54

BELVEDERE I FEATURES

ENGINES AND TRANSMISSIONS

Standard Eight: 273-cu.-in. V-8, 180 horsepower.
Standard Six: 225-cu.-in. Economy Six, 145 horsepower.

Optional Engines: See Engineering Section.

Standard Transmission: 3-speed manual.

Optional Transmissions: 3-speed TorqueFlite automatic, 4-speed manual with floor-mounted shift lever (See Optional Equipment, page 68, for availability).

EXTERIOR FEATURES

- Bright aluminum body side molding, $\frac{3}{4}$ -length.
- Belvedere I nameplate on front fenders.
- Solid red taillight lenses without division bars.
- Chrome-plated letters PLYMOUTH on rear of deck lid.
- Stainless-steel hubcaps with satin silver inserts; wheel covers optional.

INTERIOR FEATURES

- Nylon-blend cloth-and-vinyl seat trim.
- Acoustical-vinyl headlining.

- Color-keyed rubber floor covering.
- 2-spoke steering wheel with half-circle horn ring.
- 6-way custom-positioned front seat.
- Right and left fresh-air inlets under instrument panel (except on air-conditioned cars which have left only).
- Fresh-air heater and defroster with quick, air-mix temperature control.
- Curved-glass side windows.
- Ash receivers: instrument panel and rear armrests.
- Cigar lighter in instrument panel.
- Glove box lock.

SAFETY FEATURES

- Safety-padded instrument panel.
- Safety seat belts, front and rear (four).
- Variable-speed anti-windlift electric windshield wipers, parallel-operating, 16" long.
- Electric windshield washer.
- Outside rearview mirror, left.
- Back-up lights.
- Safety door latches.
- Inside safety release handles.
- Safety-Rim wheels.
- Low-profile tires: 6.95 x 14".

55

BELVEDERE STANDARD EQUIPMENT

	Satellite	Belvedere II	Belvedere I
Alternator—35-amp (46-amp. w/AC).....	S	S	S
Armrests, Front	N.A.	N.A.	S
Short, Color-Keyed.....	N.A.	S	N.A.
Short, Bright Finish.....	S	N.A.	N.A.
Long, Bright Finish.....			
Armrests, Rear	N.A.	N.A.	S
Short, Color-keyed.....	N.A.	S	N.A.
Short, Bright Finish.....	S	S	N.A.
Rear Quarter Bright Finish (2-dr. Hardtop).....	S	S	N.A.
Pocket Panel (Convertible).....	S	S	S
Ash Receivers, Front and Rear.....	S	S	S
Battery, 48-amp.-hr.....	S	S	S
Brakes, Self-adjusting.....	S	S	S
Cigar Lighter.....	S	S	S
Closed-crankcase Vent System.....	S	S	S
Coat Hooks.....	S	S	S
Console.....	S	N.A.	N.A.
Directional Signals.....	S	S	S

62

Engine—6-cyl., 225 cu. in., 145 hp.....	S	S	S
—V-8, 273 cu. in., 180 hp.....	S	S	S
Floor Covering (Passenger Compartment)			
Color-keyed Rubber Mat.....	N.A.	N.A.	S
Color-keyed Formed Carpet.....	S	S	N.A.
Floor Covering (Trunk Compartment)			
Vinyl-coated Rubber Mat.....	S	S	S
Floor Covering (Cargo Area Wagons)			
Color-keyed Vinoleum.....	—	S	S
Glove-box Lock.....	S	S	S
Heater & Defroster.....	S	S	S
Horns, Dual.....	S	S	S
Hubcaps.....	N.A.	S	S
Instrument Panel Safety Padding.....	S	S	S
Lights			
Backup.....	S	S	S
Console Courtesy.....	S	—	—
Dome (except Convert.).....	S	S	S
Rear Center Dome (3-seat Wagon).....	—	S	E
Glove Box.....	S	S	E

63

BELVEDERE OPTIONAL EQUIPMENT

	Satellite	Belvedere II	Belvedere I
Air Conditioning—Front Unit, Integral Heater (N.A. with 361 w/4-speed Man. Trans. or 426)	E	E	E
Air Foam Front Seat.....	S	S	E
Bumper Guards, Front.....	E	E	E
Bumper Guards, Rear (Incl. Step Pads on Wagons—Std. on 3-seat Wagon).....	E	E	E
Cleaner Air Package (Mandatory Calif., N.A. otherwise).....	E	E	E
Clock, Electric.....	E	E	E
Differential, Sure-Grip.....	E	E	E
Emergency Flasher (Mandatory New York state).....	E	E	E
Engines, V-8—318-cu.-in. 2-bbl., 230 hp.	E	E	E
—361-cu.-in. 2-bbl., 265 hp. (N.A. 3-speed Manual Transmission).....	E	E	E
—383-cu.-in. 4-bbl., 325 hp. (N.A. 3-speed Manual Transmission).....	E	E	E
—426-cu.-in. 2—4-bbl., 425 hp. (N.A. 3-speed Manual Trans., AC/ or Wagons)....	E	E	E
Glass, Tinted—All Windows.....	E	E	E
Windshield Only.....	E	E	E
Lights—Glove Box.....	S	S	E
—Parking Brake Warning.....	E	E	E
—Trunk Compartment.....	E	E	E
—Rear Center Dome (2-seat Wagon—Std. 3-seat Wagon).....	I	E	E

66

Lock, Luggage Compartment—2-seat Wagon.....	I	E	E
Luggage Rack (Wagons).....	I	E	E
Mirrors			
Outside, Left—Remote-control.....	E	E	E
Inside Rearview—Day/Night.....	E	E	E
Paint, Two-tone (Except Convertibles).....	E	E	E
Power—Brakes.....	E	E	E
Steering.....	E	E	E
Windows (Hardtops and Convertibles Only).....	E	E	N.A.
Tail-gate Window (2-seat Wagon—Std. 3-seat Wagon).....	I	E	E
Radios—Transaudio—AM w/Antenna.....	E	E	E
Rear-seat Speaker (N.A. Convertible or Wagon).....	E	E	E
Seat Belts—Custom Retractable—Front & Rear (With Bright Buckle).....	E	E	E
Steering Wheel—Deluxe 2-spoke w/Full Horn Ring.....	E	E	E
—3-spoke Simulated Wood Grain.....	E	E	N.A.
Sun Visors—Safety Padded (N.A. Convertible).....	E	E	E
Tachometer—Console Mounted.....	E	N.A.	N.A.
Tires, Low-profile			
6.95 x 14" Whitewall (6-cyl. Only).....	N.A.	E	E
7.35 x 14" Blackwall (6-cyl. Only, Std. w/Convertible and on V-8 Engines Except 426. Minimum Size Required on 6-cyl. w/AC).....	S	E	E

67

BELVEDERE OPTIONAL EQUIPMENT (Continued)

Tires (continued)

7.35 x 14" Whitewall (N.A. V-8 w/AC or 426)	E	E	E
7.75 x 14" Blackwall (Std. w/426 & 2-seat Wagons. Min. Size Req'd on V-8 w/AC)	E	E	E
7.75 x 14" Whitewall	E	E	E
8.25 x 14" Blackwall (Wagons Only, Std. 3-seat Wagon)	N.A.	E	E
8.25 x 14" Whitewall (Wagons Only)	N.A.	E	E
8.25 x 14" H.S. Nylon Blackwall (Wagons Only)	N.A.	E	E
8.25 x 14" H.S. Nylon Whitewall (Wagons Only)	N.A.	E	E

Trailer-Towing Package (V-8 only N.A. w/Man. Trans., 273- or 426-cu.-in. Engines)	E	E	E
Transmissions—4-speed Manual	E	E	E
(N.A. 225-, 273- or 318-cu.-in. Engine, Std. w/426-cu.-in. Engine)	E	E	E
Torqueflite—3-speed Automatic	E	E	E

Undercoating—Includes Underhood Pad	E	E	E
Vinyl Roof—Black or White (2-door Hardtop)	E	E	E
Wheel Covers, Deluxe	N.A.	E	E

68-R 12-65

PLYMOUTH BELVEDERE ACCESSORY GROUPS

BASIC—All Models

- Radio—Transradio AM—with antenna.
- Mirror—Outside left (remote control).
- Mirror—Day/Night—inside rearview.
- Wheel covers—deluxe (Custom covers std. on Satellite)

LIGHT PACKAGE—All Models

- * Glove-box light (Std. Belvedere II and Satellite).
- * Parking brake warning light.
- * Luggage compartment light (Std. on 3-seat Wagons).

PERFORMANCE SUSPENSION PACKAGE

- (Std. with Trailer-towing Pkg. and with 426-cu.-in. engine)
- * H.D. rear springs
 - * H.D. torsion bars
 - * Sway bar
 - * H.D. shock absorbers

* Available in package only.

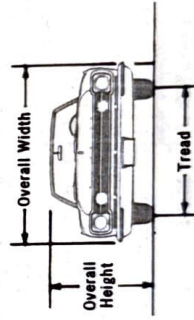
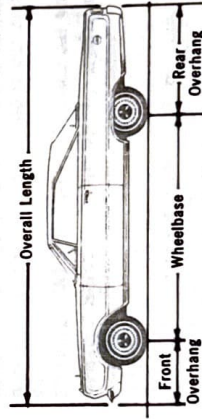
69-R 12-65

1966 BELVEDERE BASIC DIMENSIONS

Interior Dimensions	Plymouth Belvedere		
	Sedans	2-door Hardtop	Convertible
Seat Height—Front	8.6"	8.6"	8.6"
—Rear	11.0"	9.9"	9.9"
Headroom (eff.)—Front	38.8"	37.8"	38.7"
—Rear	37.8"	37.1"	37.2"
Legroom—Front	42.0"	42.0"—41.6"	42.0"—41.6"
—Rear	36.5"	34.2"—34.3"	34.2"—34.3"
Hiproom—Front	60.4"	60.4"	60.4"
—Rear	60.4"	60.6"	43.0"
Shoulder-room—Front	58.0"	58.0"	58.0"
—Rear	58.0"	58.0"	58.0"
Kneeroom—Rear	4.4"	3.3"—4.3"	3.3"—4.3"

*Second figure Satellite.

70



Exterior Dimensions	Plymouth Belvedere		
	Sedans	2-door Hardtop	Convertible
Wheelbase	116.0"	116.0"	116.0"
Overall Length	200.5"	200.5"	200.5"
Overall Width	75.5"	75.5"	75.5"
Overall Height (Full rated load)—Six	53.7"	52.8"	53.2"
—V-8	54.0"	53.2"	53.2"
Tread—Front	59.5"	59.5"	59.5"
—Rear	58.5"	58.5"	58.5"
Overhang—Front	31.4"	31.4"	31.4"
—Rear	53.1"	53.1"	53.1"
Turning Diameter (Curb to Curb)	40.6'	40.6'	40.6'
Brake Lining Area (sq. in.)—Six-cyl.	165.9	165.9	165.9
—V-8	196.2	196.2	196.2
Brake Drum Diameter	10"	10"	10"
Gasoline Tank Capacity (gals.)	19	19	19
*11" drums and 263.3 sq. in. lining area w/426.			

Trunk Dimensions	
Opening Width (at sill)	48.5"
Interior Height (max.)	16.6"
Interior Width (max.)	71.5"
Interior Length (max.)	57.7"
Luggage Capacity—usable (cu. ft.)	16.8

Plymouth Belvedere (Sedans & Hardtops)

1966 BELVEDERE SPECIFICATIONS

Air Cleaner, Engine—Heavy-duty, micronic replaceable-element dry type. Unsilenced on Commando 383 and Commando 426 engines.

Axle Assembly, Rear—Semi-floating flanged axle with 30 rolled splines on axle shaft. Hypoid gears, 2-pinion differential. Ring-gear size: 6-cyl., 7 $\frac{1}{4}$ " ; V-8, 8 $\frac{3}{4}$ " .

Axle Ratios, Rear:

	225 6-cyl.	273 V-8	318 V-8	361 V-8	383 V-8	426 V-8
With 3-speed manual transmission:						
Standard	3.23	3.23	2.94	N.A.	N.A.	N.A.
Optional	3.55	2.94	3.23	N.A.	N.A.	N.A.
Sure-Grip	—	3.55	3.55	N.A.	N.A.	N.A.
	3.23	3.23	3.23	N.A.	N.A.	N.A.
	—	2.94	2.94	N.A.	N.A.	N.A.

With 4-speed manual transmission:

Standard	N.A.	N.A.	N.A.	3.23	3.23	3.54
Optional	N.A.	N.A.	N.A.	3.55	—	—
Sure-Grip	N.A.	N.A.	N.A.	3.23	3.23	3.54

With TorqueFlite transmission:

Standard	2.94*	2.94	2.94	3.23†	3.23†	3.23
Optional	3.23	3.23	3.23	2.94†	2.94†	—
	3.55	3.55	—	3.55†	3.55†	—
Sure-Grip	3.23	3.23	3.23	3.23	3.23	3.23
	2.94	2.94	2.94	2.94†	2.94†	—

* 2.93 is standard on wagons.

† N.A. w/automatic and air conditioning.

‡ Std. w/automatic and air conditioning.

72-R 12-65

Battery—12-volt, 48-ampere-hour capacity, 59-ampere-hour, with 361. 70-ampere-hour capacity, with 383 and 426.

Bearings, Wheel—Tapered-roller all wheels.

Brakes, Service—Four-wheel, hydraulic internal-expanding, duo-servo, self-energizing. Self-adjusting on all 10" brakes, manual adjusting on 11" brakes. 10" x 2.5" front and rear on V-8 models (except 426), all wagons and front on six-cyl. models. 10" x 1.75" rear on six-cyl. models except wagons. With 426 eng., 11" x 8" front, 11" x 2.5" rear.

Effective Lining Area: 195.2 sq. in. on V-8 models except 426 eng. 165.9 sq. in. on six-cyl. models except wagons. With 426 eng. 263.3 sq. in.

Camshaft—V-8—High-intensity, silent-cam design. Long quieting ramps for smooth engine idling. 6-cyl.—High-lift, silent-cam design.

Chrome Plating—Double-nickel under chrome, lasts up to 3 times longer than ordinary chrome plating. Two layers of nickel with different grain structures provide a weather-tight base for the chrome plating.

Circuit Breakers—Circuit breakers keep vital electrical units operating when intermittent "shorting" occurs.

The following electrical circuits are protected with circuit breakers: Headlights, headlight beam indicator, windshield wipers and power windows.

Fusible safety link between battery and ammeter protects main electrical circuits.

Clutch (Manual Transmission)—Outside diameter, 273-10", 318 and 361-10.5", 383-10.5" H.D.; 426-11" H.D., 6-cyl.-9.25". Release bearing is permanently lubricated ball bearing.

Cooling Systems, Engine—14 p.s.i. pressure-vent, bypass system (16 p.s.i. with air conditioner and 426 engine). Full-circle water jackets for all cylinders. Capacity: 273-18 qts. with heater. 318-21 qts. with heater. 361, 383 and 426-17 qts. with heater. Economy Six-13 qts. with heater. Thermostat, expansion-pellet-controlled, 180° F.

Crankcase Capacity—All engines except Commando 426: 4 qts. Commando 426: 5 qts. When oil filter is changed, an additional quart is required.

Exhaust System—Single exhaust system on 273, 318, 361 and Economy Six. Dual exhaust system on 383 and 426. Aluminized mufflers and tail pipes on all engines—383 and 426 have stainless steel in critical parts of left-side muffler.

73-R 12-65

1966 BELVEDERE SPECIFICATIONS (Continued)

Filter, Fuel—Two filters with all engines. Woven plastic 40-micron filter in gas tank. 15-micron filter in fuel line between fuel pump and carburetor.

Filter, Oil, Engine—Full-flow throwaway-type.

Filter, TorqueFlite Transmission Oil—Full-flow internally mounted, provides 100% filtration of all circulating oil. Under normal driving conditions transmission oil and filter should not require changing.

Fuel Tank Capacity—19 gallons, all models.

Gauges—Oil pressure—red warning light. Alternator gauge—needle indicator. Fuel level (gasoline)—needle indicator, thermal-electric. Engine temperature—needle indicator, thermal-electric.

Glass Area (Square inches)

Belvedere Models	Over-all		Rear		Side	
	Windshield	Windows	Window	Windows	Windows	Windows
4-door Sedans	3726	1317	1026	1383	1383	1383
2-door Sedans	3695	1317	1026	1352	1352	1352
2-door Hardtops	3860	1264	1321	1275	1275	1275
Convertibles	3526	1264	1045	1217	1217	1217
4-door Station Wagons	4877	1317	826	2734	2734	2734

Glass, Safety — Windshield, laminated safety glass. Rear window, solid tempered safety glass. Side windows, solid tempered safety glass.

Headlamps, Single—12-volt, sealed-beam, glare-protected; 7" lenses.

Hydraulic Tappets—Standard on 361 and 383. Chrome-plated plungers for longer life and quieter, more efficient operation.

Ignition System—12-volt, weather-resistant, with automatic distributor spark advance, ventilated contact points and neoprene resistor spark plug cables used on all engines. Dual breaker distributor points on 426.

Lubrication, Suspension and Steering—Four front-suspension ball joints require lubrication at 36,000 miles or 3 years, whichever occurs first.

Muffler, Exhaust—Aluminized, reverse-flow, 3-pass, asbestos-wrapped muffler. Muffler and tail pipe are aluminized, inside and out, all engines. Extra-aluminized resonator with Convertible muffler. Dual aluminized mufflers and tail pipes used on 383 and 426. Critical

74-R 12-65

parts in left-side muffler are stainless steel for longer life.

Plugs, Spark—14 mm. with deep rubber-cap moisture seals and resistor cables.

Pump, Oil, Engine — Rotary-type, positive displacement pump.

Pump, Water—Centrifugal-type, sealed ball bearing—all engines. No lubrication required.

Safety-Rim Wheels—Two tire-retaining beads on rim for protection in case of a blowout. Rim width: 5.0" sedans and hardtops, 5.5" wagons.

Seat Adjustment, Front—Manual, two-way adjustment is made by releasing lever on left side of driver's seat and moving seat forward or backward. Adjustment limit: 4.5" front-to-rear with 1.2" rise as seat moves forward on inclined track. Custom-positioned front seat gives additional 1.6" fore-and-aft and 1" vertical travel plus 7.5° seat tilt.

Shock Absorbers, Oriflow—Hydraulic, double-acting, telescopic.

Starter—Reduction-gear, high torque, low current draw. 426 uses straight-through starter w/man. trans. Solenoid shift for positive engagement; starter gear remains engaged with engine flywheel until ignition key is released.

Steering, Ball-Joint—Steering knuckles pivot on low-friction ball joints for easy steering.

Steering, Manual—Low-friction, recirculating ball-nut gear. Symmetrical idler-arm linkage with equal-length tie rods, low-friction ball joints. Gear ratio, 24.0 to 1. Overall ratio, 29.0 to 1. Number of steering wheel turns, full left to full right, 5.4.

Steering, Power, Constant-Control — Full-time constant-control. Gear ratio, 15.7 to 1. Overall ratio, 19.0 to 1. Number of steering wheel turns, full left to full right, 3.5.

Tire Pressures—Refer to Owner's Manual.

Transmission, Synchro-Silent 3-speed Manual—3-speed, synchronous-meshing in 2nd and 3rd gears, with manual shift lever on steering column. Helical gears all speeds.

1966 BELVEDERE SPECIFICATIONS (Continued)

Transmission Gear Ratios, 3-speed:

Gear Ratios	225 6-cyl.	273 & 318 V-8
1st	2.95	3.02
2nd	1.83	1.76
3rd	1.00	1.00
Reverse	3.80	3.95

Transmission, Synchron-Silent 4-Speed Manual— 4-speed, fully synchronized in all forward gears. Floor-mounted shift lever. Console-mounted on Satellite models.

Gear Ratios	361, 383, and 428 V-8 engines*
1st	2.66
2nd	1.91
3rd	1.39
4th	1.00
Reverse	2.58

* Not available with 273, 318 V-8 engine or 225-cu.-in. Six.

Transmission, Torque-Flite— 3-speed automatic. Water-cooled. Maximum torque-converter ratio, 2.2 to 1 (6-cyl. and 273 V-8); 2.0 to 1 (All V-8's except 273). Planetary-gear ratios: first, 2.45 to 1; second, 1.45 to 1; reverse, 2.20 to 1. Maximum overall ratio, 5.39 to 1 (6-cyl. and 273 V-8); 4.90 to 1 (All V-8's except 273).

Turning Diameter (Curb-to-Curb) — 40.6'; wagons, 40.9'.

Universal Joint, Drive Shaft— Front and rear: Cross and roller.

Voltage Regulator, Alternator— 12-volt voltage control with cut-out relay; moisture-protected.

Windshield Washers, Electric Push-button — Electric-driven washer pump operates at push on windshield wiper knob.

Windshield Wipers, Electric— Variable-speed, electrically operated. Wiper blade length, 16". Wiper-blade arms have airfoil design that increases blade pressure on windshield as car speed increases, prevents wind-lift of wiper blades at turnpike speeds.

1966 PLYMOUTH EXTERIOR COLORS

BELVEDERE I 2 SEAT WAGONS
 BELVEDERE I 4 DOOR SEDAN AND 2 DOOR SEDAN

BASIC CAR COLOR

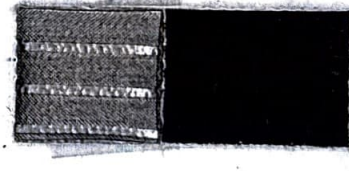
INTERIOR TRIM COLOR AND CODE	BASIC CAR COLOR																	
	SILVER METALLIC	BLACK	LIGHT BLUE	LIGHT BLUE METALLIC	DARK BLUE METALLIC	DARK GREEN METALLIC	LT. TURQUOISE METALLIC	DK. TURQUOISE METALLIC	BRIGHT RED	DARK RED METALLIC	YELLOW	SOFT YELLOW	WHITE	BEIGE	BRONZE METALLIC	CITRON GOLD METALLIC	CHARCOAL	LIGHT MAUVE METALLIC
L4B-L1B Blue	AA1	BB1	CC1	DD1	EE1	GG1	KK1	LL1	PP1	QQ1	RR1	SS1	WW1	XX1	YY1	ZZ1	221	661
L4T-L1T Tan	α	α	α	■	■		α	α					■	■				
L4R-L1R Red	■	■						α	α	■			■					

■ Recommended
 α Acceptable

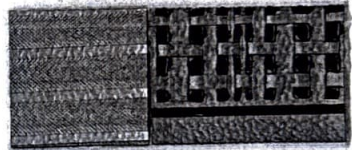
(See page 4 for convertible top and vinyl roof selections)

1966 PLYMOUTH INTERIOR TRIMS

BELVEDERE I
 2 SEAT WAGON



BLUE
Code L4B



TAN
Code L4T

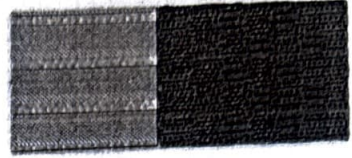


RED
Code L4R

BELVEDERE I
 4 DOOR SEDAN AND 2 DOOR SEDAN



BLUE
Code L1B



TAN
Code L1T



RED
Code L1R

VINYL AND VINYL

All specifications subject to change without notice.

VINYL AND FABRIC

BELVEDERE I