

<div style="border: 1px solid black; padding: 2px; display: inline-block;">W703</div> <p style="text-align: center; margin: 0;">Studebaker</p> <p style="text-align: center; margin: 5px 0;">PASSENGER CAR ORDER AND INSPECTION RECORD</p> <p style="font-size: small; margin: 0;">INSTRUCTIONS: Made in multiple from Sales Orders by Production Records Department, Original written with hectograph ink and copied for distribution. When car passes over final line, salmon copy retained by Production Records Dept., pink copy to Invoice Bureau, green copy to Works Accounting Dept. After final inspection, blue copy forwarded to Works Accounting Dept., manila copy by Production records Office, and other copies distributed as required in all cases if specifications change, this form must be reissued.</p>	Factory Order No. <i>74570-A</i>	Engine No.	Serial No.	
	Date Written <i>7-19-40</i>	<i>100510</i>	<i>G 89322</i>	
	Sales Order No. <i>534</i>	Model and Body Type <i>2G-Q4</i>	Control { Left Right	
	Item No.	Body No.		
	Quantity on Item	<i>211</i>	Gear Ratio	
	Date to Ship	Speedometer Miles Metric	Key No. <i>1670</i>	
	Paint No. <i>1848 TULIP CREAM</i>	How To Ship	Option	Key No. <i>1334</i>
			Overdrive	Reinforced Springs
	Trim No. <i>4707 MM LEATHER</i>	Wheels { Steel Painted Spoke Steel Painted Disc.		
		Tires { Black White Cylinder Head Accessory Group No.		
Other Special Body Features	Other Special Chassis Features			
	<i>TAKE ABOVE SERIAL & SERVICE:</i>			
	<i>INST. AC 807 CLOCK; AC 512 SPOTLITE; AC 970 FRT GUARD.</i>			
	Destination <i>SAN FRANCISCO, CALIF</i>			
	Date Final Assn. <i>6-24-40</i>	Final Inspector	Date	
	Date Shipped	Invoice No.	Shipper No.	

Acme



STUDEBAKER CHAMPION BULLETIN No. 7

1940 STUDEBAKER-CHAMPION COLORS

L A C Q U E R

No. 5858 TULIP CREAM Fill to
 716 White 53 1/4
 723 Oxide Yellow 54 1/4
 807 Yellow 56
 807 Yellow Tint
 715 Black Tint

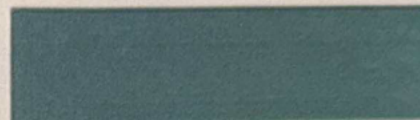
Car Mfgr's.
 Color Symbol
 W-JK



No. 5858 TULIP CREAM

No. 4928 LAUREL GREEN Fill to
 719 Light Green 17
 810 Prussian Blue 25 1/4
 715 Black 34 1/4
 716 White 56
 726 Green Toner Tint

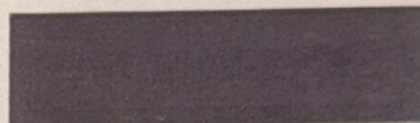
W-JY



No. 4928 LAUREL GREEN

No. 4931-A CHAMPION MAROON Fill to
 809 Maroon 49
 737 Deep Maroon 54
 736 Bright Maroon 56

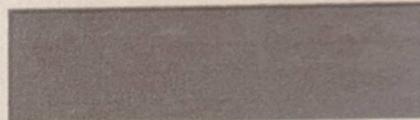
W-KE



No. 4931-A CHAMPION MAROON

No. 5859 BELMONT TAN Fill to
 716 White 31 1/2
 718 Brown 47 1/4
 715 Black 52 1/2
 723 Oxide Yellow 55 1/4
 724 Red Oxide 56

W-KL



No. 5859 BELMONT TAN

No. 5861 PILGRIM GRAY Fill to
 716 White 38 3/4
 715 Black 46 3/4
 731 Blue Toner 51 3/4
 723 Oxide Yellow 56
 724 Red Oxide Tint

W-KM



No. 5861 PILGRIM GRAY

No. 5860 BELVEDERE BLUE Fill to
 716 White 24
 810 Prussian Blue 39 1/2
 715 Black 53
 724 Red Oxide 56

W-KN



No. 5860 BELVEDERE BLUE

5862-A RUBY RED Fill to
 732 Dark Red 33 3/4
 738 Permanent Maroon Toner 53 3/4
 715 Black 56

W-KP



No. 5862-A RUBY RED