



Corvettes are all we do.

Zip Products

8067 Fast Ln.

Mechanicsville, VA 23111-1189

Phone: 800.962.9632 www.zip-corvette.com



CP

Order

Date	Page	Number
12/19/25	1	2535305100

Bill To

Ship To

Account	Ordered	Ship Date	Customer PO#	Telephone	Operator	Terms	Ship Method
1258063	12/19/25			508.847.0520	Carson	CreditCard	UPS Ground

Item #	Bin	Description	UM	QOR	QBO	QSH	Price	Amount
XR-220	C-07-07	67 AM/FM Stereo Bluetooth Radio	EA	1	0	1	869.990	869.99
DR-438	F04-06	64L-67 Outer Door Handle Set (US Reproduction)	EA	1	0	1	107.990	97.19
GT-21	J09-04A	67 Gas Door Assembly	EA	1	0	1	193.990	174.59
DB-707	KIT	67-82 Stainless Steel Park Brake Cable Kit	EA	1			93.990	84.59
.PB-285	D06-02B	67-82 Park Brake Front Cable (Stainless)	EA	1	0	1		Included
.DB-46	J12-11B	65-82 Stainless Rear Park Brake Cable	EA	1	0	1		Included
.DB-466	J13-08E	65-82 Rear Park Brake Cable Guide	EA	2	0	2		Included
A-339	KIT	67-68 Antenna Assembly	EA	1			120.990	63.00
.A-202	B13-05E	63-68 Antenna Nut Spacer	EA	1	0	1		Included
.A-208	B13-05H	65-68 Antenna Nut	EA	1	0	1		Included
.A-206	B13-05H	67-68 Antenna Body	EA	1	0	1		Included
.WS-402	B16-03B	63-78 Antenna Base Gasket	EA	1	0	1		Included
.A-378	D15-VT	67-68 Antenna Mast (Correct Reproduction)	EA	1	0	1		Included
CATC2	Z-CAT	1963-1967 Corvette Catalog	EA	1	0	1	0.000	0.00

?? 10% ??

Merchandise	Shipping	Add Charge	Other	Credits	Tax	Order To
1289.36	22.04	0.00	0.00	0.00	90.27	140

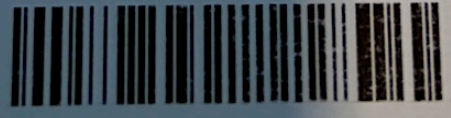
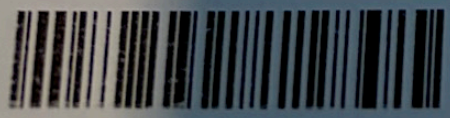
Please inspect your package carefully.

Paid Amount 140

Balance on Order

PATRICK MOTORS
#2535305100 Pkg# 3 2 09

PATRICK MOTORS
#2535305100 Pkg# 2 2 09



TILDEN CAR CARE CENTER

Invoice (#80816)
 Against Estimate #: 11441
 Customer: Niel/Irwin Patrick
 Vehicle: 1967 CHEVROLET CORVETTE
 Service Advisor: Paul Triones

[Download](#) [Approve](#)

CREDIT FOR OLD ENGINE (-2500.0)

\$0.00

Assigned techs: No tech assigned

[Approved](#)

	Price x Qty / Hrs	Disc./Fees	Total
Misc Part	\$0.00		
	x1		
CREDIT FOR OLD ENGINE SEE DISCOUNT SECTION			\$0.00
Service subtotal:			\$0.00

PRELIMINARY

\$90.00

Assigned techs: Paul Triones

[Approved](#)

[Approve](#)

[Download](#)

	Amount	Disc./Fees	Total
FUEL	\$90.00		\$90.00

PRELIMINARY

Items in good condition

✓ 1

Items that need to be monitored

ⓘ 0

Items that require immediate attention

✗ 0

[View Details](#)

Service subtotal: \$90.00

MULTIPOINT

\$128.60

[Approved](#)

Assigned techs: No tech assigned

	Price x Qty / Hrs	Disc./Fees	Total
BULB	\$32.15		\$128.60
	x4		

Comprehensive Inspection

- Items in good condition ✔ 0
- Items that need to be monitored ⓘ 0
- Items that require immediate attention ✖ 0

[View Details](#)

Service subtotal: \$128.60

BUILD AND INSTALL ENGINE
\$14,552.54

✔ Approved

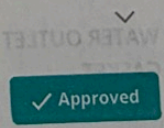
Assigned techs: No tech assigned

	Price x Qty / Hrs	Disc./Fees	Total
MISC LABOR	\$155.00 x10	-\$155.00	\$1,395.00
ASSEMBLE ENGINE FOR INITIAL REMOVE OLD ENGINE & INSTALL NEW SET UP AND TUNE			
TIMING COVER GASKET SET	\$42.48 x1		\$42.48
INTAKE MANIFOLD GASKETS	\$79.98 x1		\$79.98
VALVE COVER GASKETS	\$79.98 x2		\$159.96
HEAD BOLT	\$95.88 x1		\$95.88
HEAD GASKET	\$56.98 x2		\$113.96
THERMOSTAT	\$18.58 x1		\$18.58
BELT	\$24.88 x1		\$24.88
DISTRIBUTOR GASKET	\$6.65 x1		\$6.65
SPARK PLUG	\$9.28 x8		\$74.24

V- BELT	\$47.60	x1	\$47.60
V-BELT	\$23.73	x1	\$23.73
ENGINE MOUNT	\$24.70	x2	\$49.40
WATER PUMP	\$130.35	x1	\$130.35
VALVE LIFTER	\$19.98	x16	\$319.68
ENGINE BREAK IN OIL	\$49.99	x1	\$49.99
ASSEBLY LUBE	\$10.60	x1	\$10.60
CAMSHAFT & TIMING CHAIN KIT	\$0.00	x1	\$0.00
INCLUDED WITH SHORT BLOCK			
IGNITION WIRE SET	\$122.85	x1	\$122.85
IGNITION MODULE	\$90.35	x1	\$90.35
IGNITION COIL	\$63.85	x1	\$63.85
TRANSMISSION MOUNT	\$29.68	x1	\$29.68
LUK CLUTCH KIT	\$274.65	x1	\$274.65
THERMOSTAT	\$18.58	x1	\$18.58
WATER OUTLET GASKET	\$10.95	x1	\$10.95
Misc Part	\$8,749.00	x1	\$8,749.00
ENGINE SHORT BLOCK 454CU			
Misc Part	\$600.00	x2	\$1,200.00
OVAL PORT CYLINDER HEAD			

Misc Part	\$160.00 x1	\$160.00
PUSH ROD		
Misc Part	\$229.00 x1	\$229.00
ROCKER ARM		
Misc Part	\$199.00 x1	\$199.00
CHROME VALVE COVER		
Misc Part	\$74.10 x1	\$74.10
TIMING COVER		
Misc Part	\$37.10 x1	\$37.10
OIL PAN GASKET		
Misc Part	\$0.00 x1	\$0.00
USED HEI DISTRIBUTER		
Misc Part	\$69.45 x1	\$69.45
LUCAS ZINC BREAK IN OIL 5QT		
Misc Part	\$278.63 x1	\$278.63
EXTERNAL WEIGHTED HARMONIC BALANCER		
Misc Part	\$228.43 x1	\$228.43
EXTERNAL WEIGHTED FLYWHELL		
OIL FILTER	\$6.99 x2	\$13.98
Amaanti	\$29.99 x2	\$59.98
AMALIE HIGHLINE OEM COOLANT		
		Amount: \$14,707.54
		Discount: \$155.00
		Service subtotal: \$14,552.54

INSTALL AFTERMARKET POWER STEERING KIT
\$3,264.53



Assigned techs: No tech assigned

	Price x Qty / Hrs	Disc./Fees	Total
MISC LABOR	\$155.00 x5	-\$77.50	\$697.50
INSTALL AFTERMARKET POWER STEERING KIT			

\$228.43
x1

\$228.43

\$6.99
x2

\$13.98

\$29.99
x2

\$59.98

Amount: \$14,707.54

Discount: \$155.00

Service subtotal: \$14,552.54

RING KIT

✓ Approved

Disc./Fees

Total

-\$77.50

\$697.50

POWER STEERING CONVERSION KIT	\$2,550.25 x1	\$2,550.25
POWER STEERING FLUID	\$16.78 x1	\$16.78
		Amount: \$3,342.03
		Discount: \$77.50
		Service subtotal: \$3,264.53

INSTALL CLIENT SUPPLIED FUEL TANK FLIP TOP
\$36.00

✓ Approved

Assigned techs: No tech assigned

	Price x Qty / Hrs	Disc./Fees	Total
MISC LABOR	\$40.00 x1	-\$4.00	\$36.00
			Amount: \$40.00
			Discount: \$4.00
			Service subtotal: \$36.00

INSTALL CLIENT SUPPLIED ANTENNA BASE AND MAST
\$139.50

✓ Approved

Assigned techs: No tech assigned

	Price x Qty / Hrs	Disc./Fees	Total
MISC LABOR	\$155.00 x1	-\$15.50	\$139.50
			Amount: \$155.00
			Discount: \$15.50
			Service subtotal: \$139.50

ALIGNMENT
\$99.99

✓ Approved

Assigned techs: No tech assigned

	Price x Qty / Hrs	Disc./Fees	Total
MISC LABOR	\$99.99 x1		\$99.99
WHEEL ALIGNMENT			

Service subtotal: \$99.99

REMOVE AND REPAIR LEFT DOOR LATCH
\$75.00

✓ Approved

Assigned techs: No tech assigned

	Price x Qty / Hrs	Disc./Fees	Total
MISC LABOR	\$75.00 x1		\$75.00
REMOVE AND REPAIR LEFT DOOR LATCH			

Service subtotal: \$75.00

INSATLL CLIENT SUPPLIED DOOR HANDLES
\$251.10

✓ Approved

Assigned techs: No tech assigned

	Price x Qty / Hrs	Disc./Fees	Total
MISC LABOR	\$155.00 x1.8	-\$27.90	\$251.10
INSTALL CLIENT SUPPLIED DOOR HANDLES			

Amount: \$279.00

Discount: \$27.90

Service subtotal: \$251.10

INSATLL CLIENT SUPPLIED RADIO ADD SPEAKERS TO INVOICE
\$378.00

✓ Approved

Assigned techs: No tech assigned

	Price x Qty / Hrs	Disc./Fees	Total
MISC LABOR	\$155.00 x1.5	-\$23.25	\$209.25
INSTALL RADIO RE WIRE & SPEAKERS			
Misc Part	\$168.75 x1		\$168.75
2 SPEAKERS 6X9 WITH ENCLOSURES			

Amount: \$401.25

Discount: \$23.25

Service subtotal: \$378.00

DIAG AND REPAIR RT SIDE HEADLIGHT DOOR HITTING BUMPER
\$225.00

✓ Approved

Assigned techs: No tech assigned

✓ Approved

Disc./Fees

Total

-\$27.90

\$251.10

Amount: \$279.00

Discount: \$27.90

Service subtotal: \$251.10

RS TO INVOICE



✓ Approved

Disc./Fees

Total

-\$23.25

\$209.25

	Price x Qty / Hrs	Disc./Fees	Total
MISC LABOR	\$250.00 x1	-\$25.00	\$225.00
DIAG AND REPAIR RT SIDE HEADLIGHT DOOR HITTING BUMPER REPAIR WIRING FOR HEAD LIGHTS AND ADJUST BUMPER			
Amount:			\$250.00
Discount:			\$25.00
Service subtotal:			\$225.00

CHECK BRAKES CLIENT FEELS LIKE IT DOES NOT STOP ✓
 \$0.00

Approved

Assigned techs: No tech assigned

	Price x Qty / Hrs	Disc./Fees	Total
MISC LABOR	\$155.00 x0		\$0.00
BRAKE FRICTUON MATERIAL GOOD HAS NO PWR BRAKES IN THIS MODEL RECOMMEND ADDING PWR BRAKE KIT			
Service subtotal:			\$0.00

Summary

Parts	\$16,021.92
Labor	\$3,456.49
Other	\$90.00
Subtotal	\$19,568.41
Total Item Discount	\$328.15
RO Fees	
Shop supplies	\$39.99
Order Discount	
ENGINE CREDIT	\$2,500.00
Grand total	\$16,780.25
Paid to date	\$16,780.25
Remaining Balance	\$0.00
Deferred Total	\$0.00

Service Advisor: Paul Trigonos

Notes

- INSTALL NEW ENGINE AND TUNE
- INSTALL POWER STEERING SYSTEM
- INSTALL CLIENT SUPPLIED ADDITIONAL PARTS

\$16,021.92

\$3,456.49

\$90.00

\$19,568.41

\$328.15

\$39.99

\$2,500.00

\$16,780.25

\$16,780.25

\$0.00

\$0.00

Payment Method: CreditCard

Ship Method: UPS Ground

Item	Description	Quantity Ordered	Back Ordered	Unit Price	Extended Price
XR-220	67 AM/FM Stereo Bluetooth Radio	1	0	869.99	869.99
DR-438	64L-67 Outer Door Handle Set (US Reproduction)	1	0	97.19	97.19
GT-21	67 Gas Door Assembly	1	0	174.59	174.59
DB-707	67-82 Stainless Steel Park Brake Cable Kit	1	0	84.59	84.59
..PB-285	67-82 Park Brake Front Cable (Stainless)	1	0	0.00	0.00
..DB-46	65-82 Stainless Rear Park Brake Cable	1	0	0.00	0.00
..DB-466	65-82 Rear Park Brake Cable Guide	2	0	0.00	0.00
A-339	67-68 Antenna	1	0	63.00	63.00

	Assembly				
	63-68				
..A-202	Antenna Nut	1	0	0.00	0.00
	Spacer				
	65-68				
..A-208	Antenna Nut	1	0	0.00	0.00
	67-68				
..A-206	Antenna Body	1	0	0.00	0.00
	63-78				
..WS-402	Antenna Base	1	0	0.00	0.00
	Gasket				
	67-68				
..A-378	Antenna Mast	1	0	0.00	0.00
	(Correct				
	Reproduction)				
	1963-1967				
CATC2	Corvette	1	0	0.00	0.00
	Catalog				

Comments:

Subtotal	1289.36
Shipping	22.04
Add Charge	0.00
Other	0.00
Credits	0.00
Tax	90.27
Total (USD)	1401.67

Thank you for your order.

Emails sent or received do not constitute acceptance of conducting transactions via electronic means, nor will they create a binding