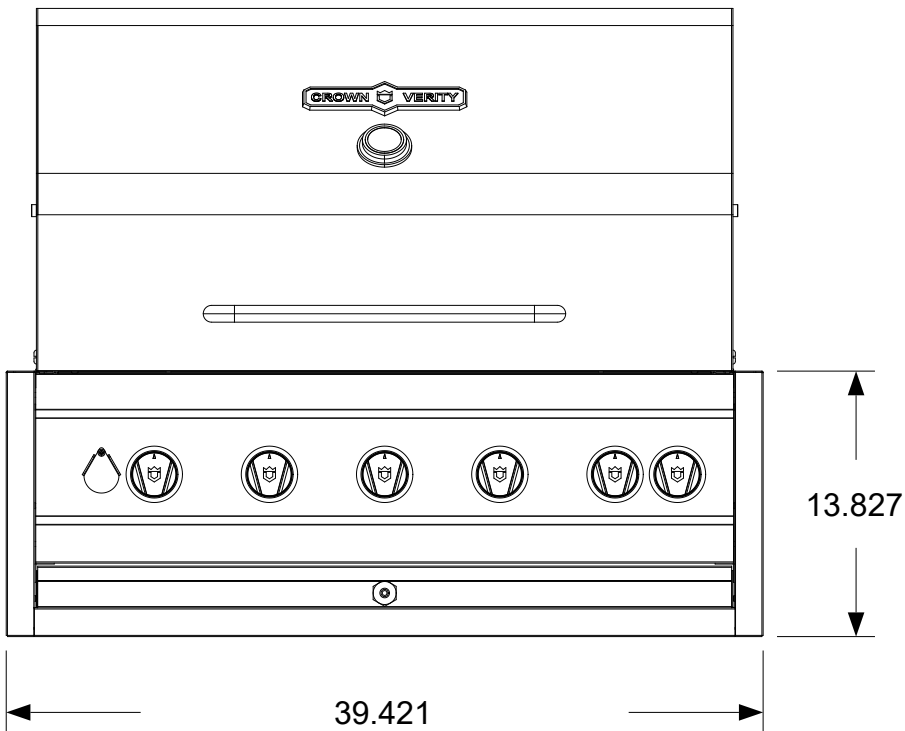
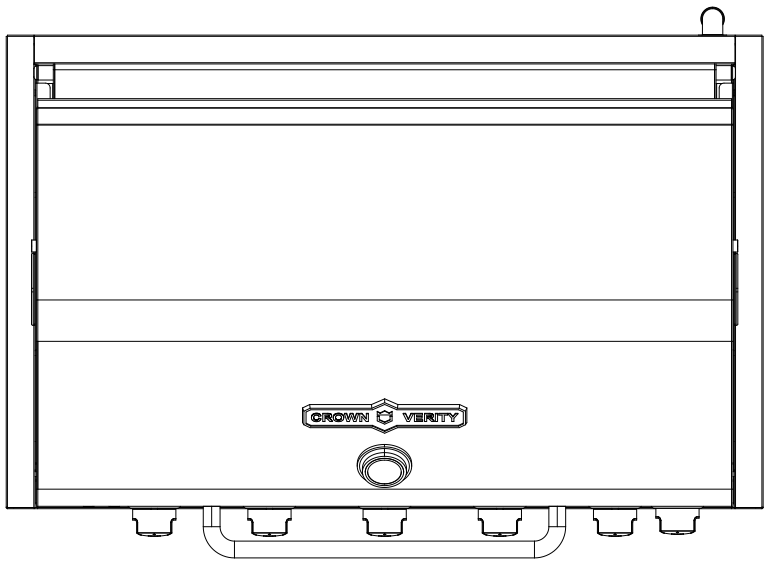
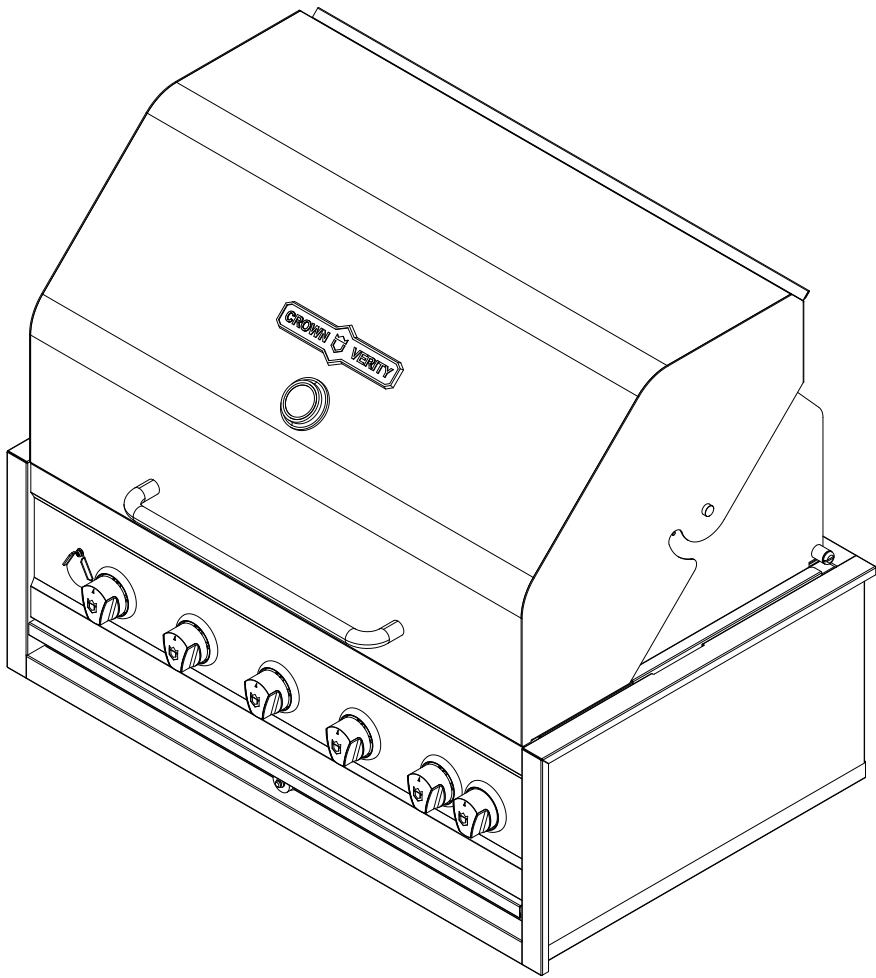
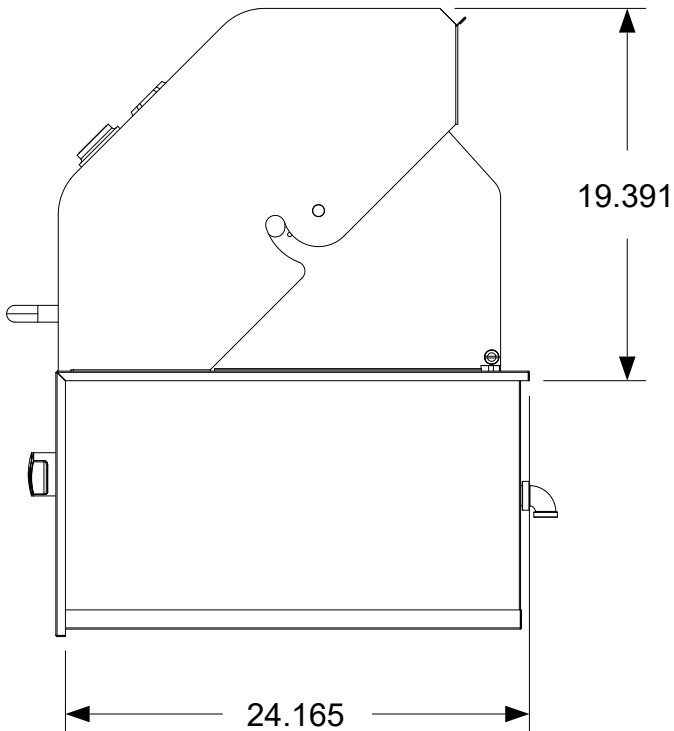


REVISION HISTORY			
REV	DESCRIPTION	DATE	APPROVED
-	Engineering Release	03/20/2018	Todd Stone



EE36 Shown
For EE24 Dimension is 27.421
For EE30 Dimension is 33.421
For EE48 Dimension is 52.821

Dimensions shown are actual dimensions. Please refer to the installation manual for additional clearances and clearances to combustibles



CROWN VERITY

37 Adams Blvd., Brantford, Ontario, N3S 7V8
P: (519) 751-1800 www.crownverity.com

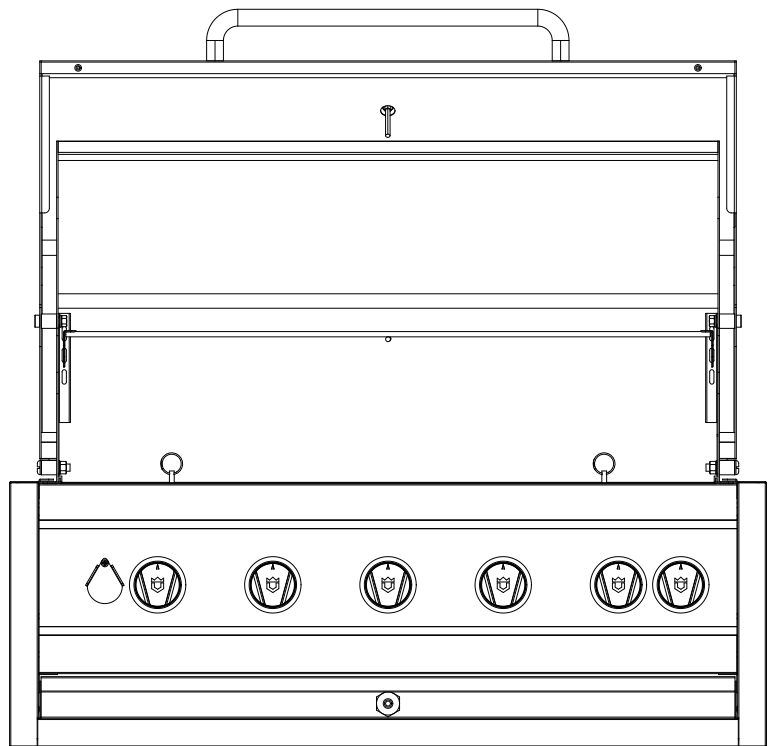
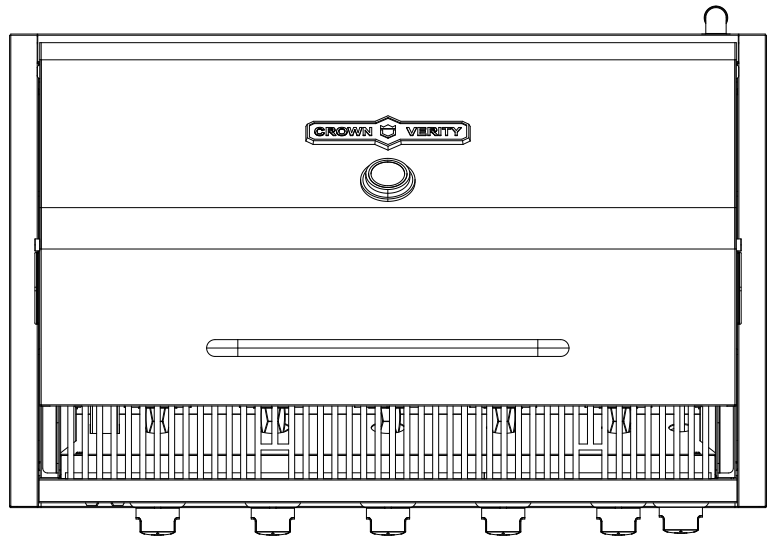
TITLE

Estate Elite BI with Insulated Jacket Clearances

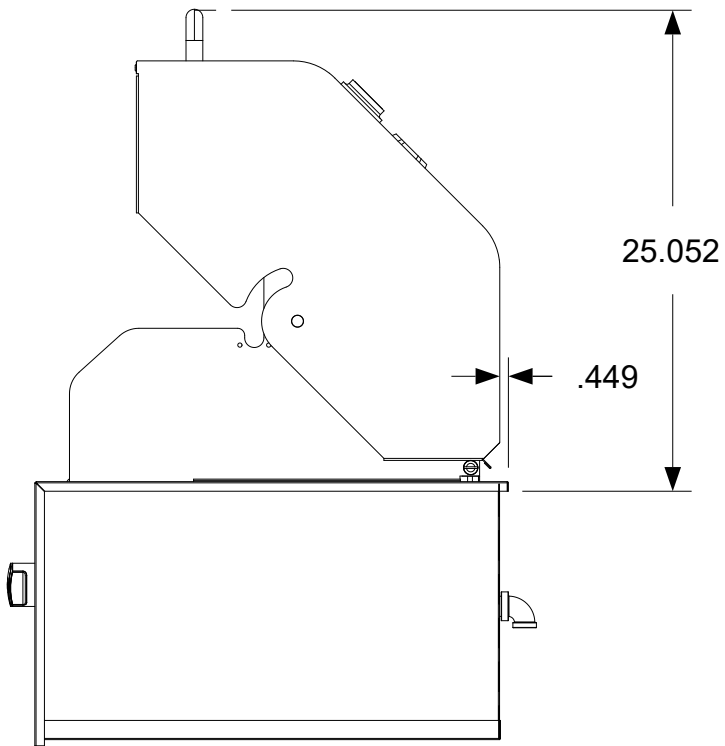
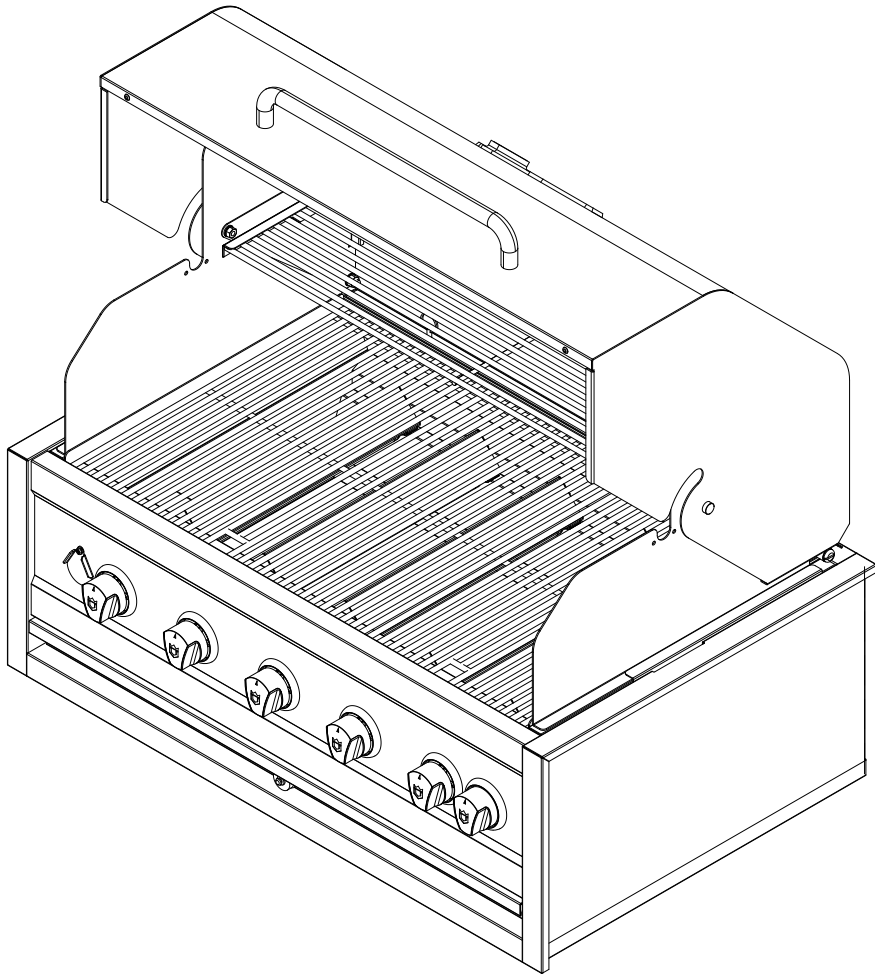
SIZE	Customer	DWG NO	REV
B	Crown Verity	-	-

SCALE	1:10	03/20/2018	SHEET	1 of 3
-------	------	------------	-------	--------

Gauge	N/A	Dimensions are in inches Linear Tolerance: +/- .015 Bend Tolerance: +/- .020 Angular Tolerance: +/- 0.5 Radial Tolerance: +/- .005
Weight (Kg)	N/A	
K Factor	N/A	
Finish	#4	
Material	SS 304	DRAWN BY: Todd Stone



REVISION HISTORY			
REV	DESCRIPTION	DATE	APPROVED
-	Engineering Release	03/20/2018	Todd Stone

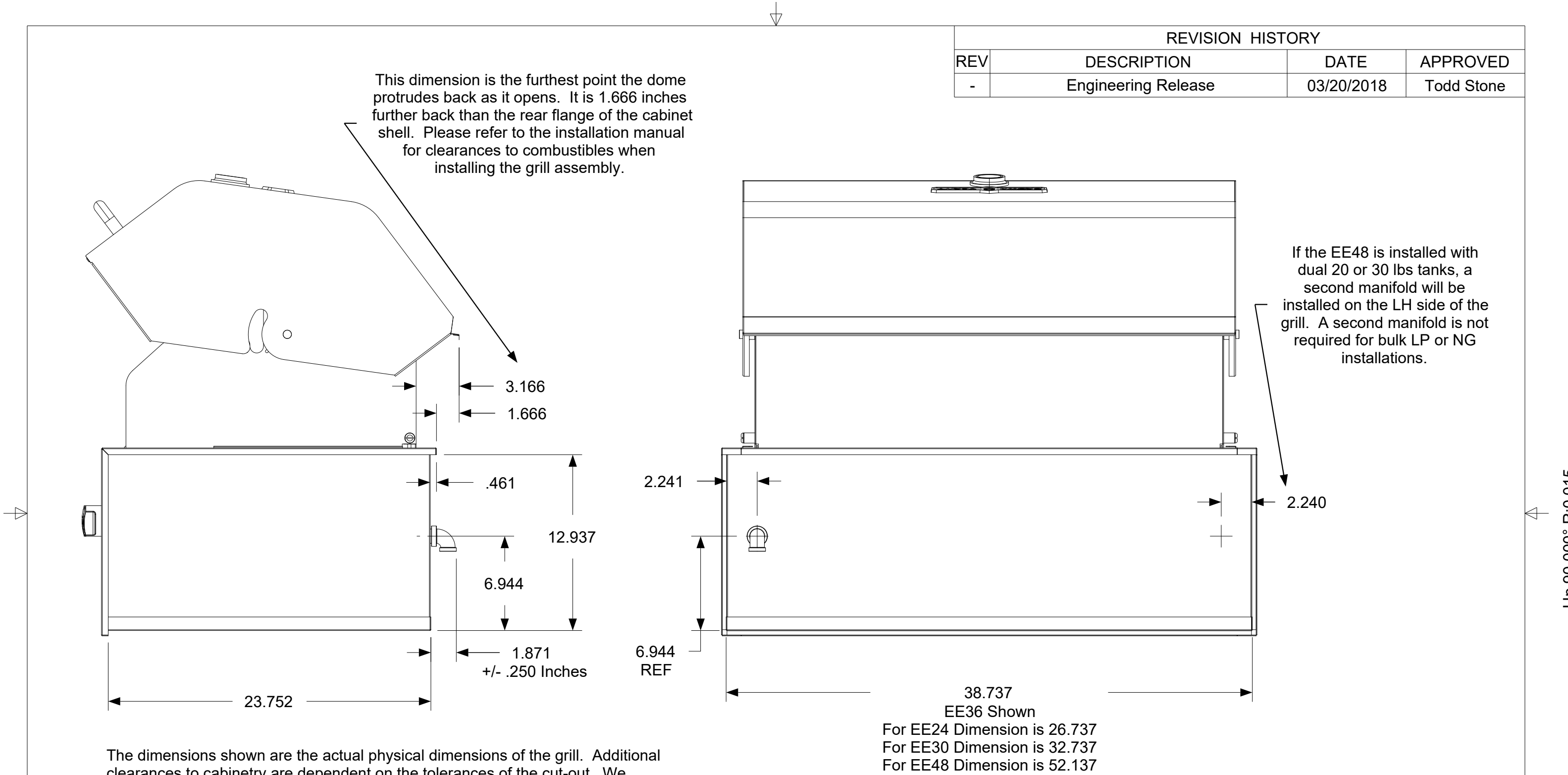


Dimensions shown are actual dimensions. Please refer to the installation manual for additional clearances and clearances to combustibles

Gauge	N/A	Dimensions are in inches Linear Tolerance: +/- .015 Bend Tolerance: +/- .020 Angular Tolerance: +/- 0.5 Radial Tolerance: +/- .005
Weight (Kg)	N/A	
K Factor	N/A	
Finish	#4	
Material	SS 304	DRAWN BY: Todd Stone


CROWN VERITY			
37 Adams Blvd., Brantford, Ontario, N3S 7V8 P: (519) 751-1800 www.crownverity.com			
TITLE		Estate Elite BI with Insulated Jacket Clearances	
SIZE	Customer	DWG NO	REV
B	Crown Verity	-	-
SCALE	1:10	03/20/2018	SHEET 2 of 3

REVISION HISTORY			
REV	DESCRIPTION	DATE	APPROVED
-	Engineering Release	03/20/2018	Todd Stone



The dimensions shown are the actual physical dimensions of the grill. Additional clearances to cabinetry are dependent on the tolerances of the cut-out. We recommend an additional .125 inches per side but the opening can be made smaller if the tolerances are controlled.

Please refer to the installation manual for additional clearances to combustibles.



37 Adams Blvd., Brantford, Ontario, N3S 7V8
P: (519) 751-1800 www.crownverity.com

TITLE Estate Elite BI with Insulated Jacket Clearances

SIZE	Customer	DWG NO	REV
B	Crown Verity	-	-

SCALE	1:5	03/20/2018	SHEET	3 of 3
-------	-----	------------	-------	--------

Gauge	N/A	Dimensions are in inches Linear Tolerance: +/- .015 Bend Tolerance: +/- .020 Angular Tolerance: +/- 0.5 Radial Tolerance: +/- .005
Weight (Kg)	N/A	
K Factor	N/A	
Finish	#4	
Material	SS 304	DRAWN BY: Todd Stone