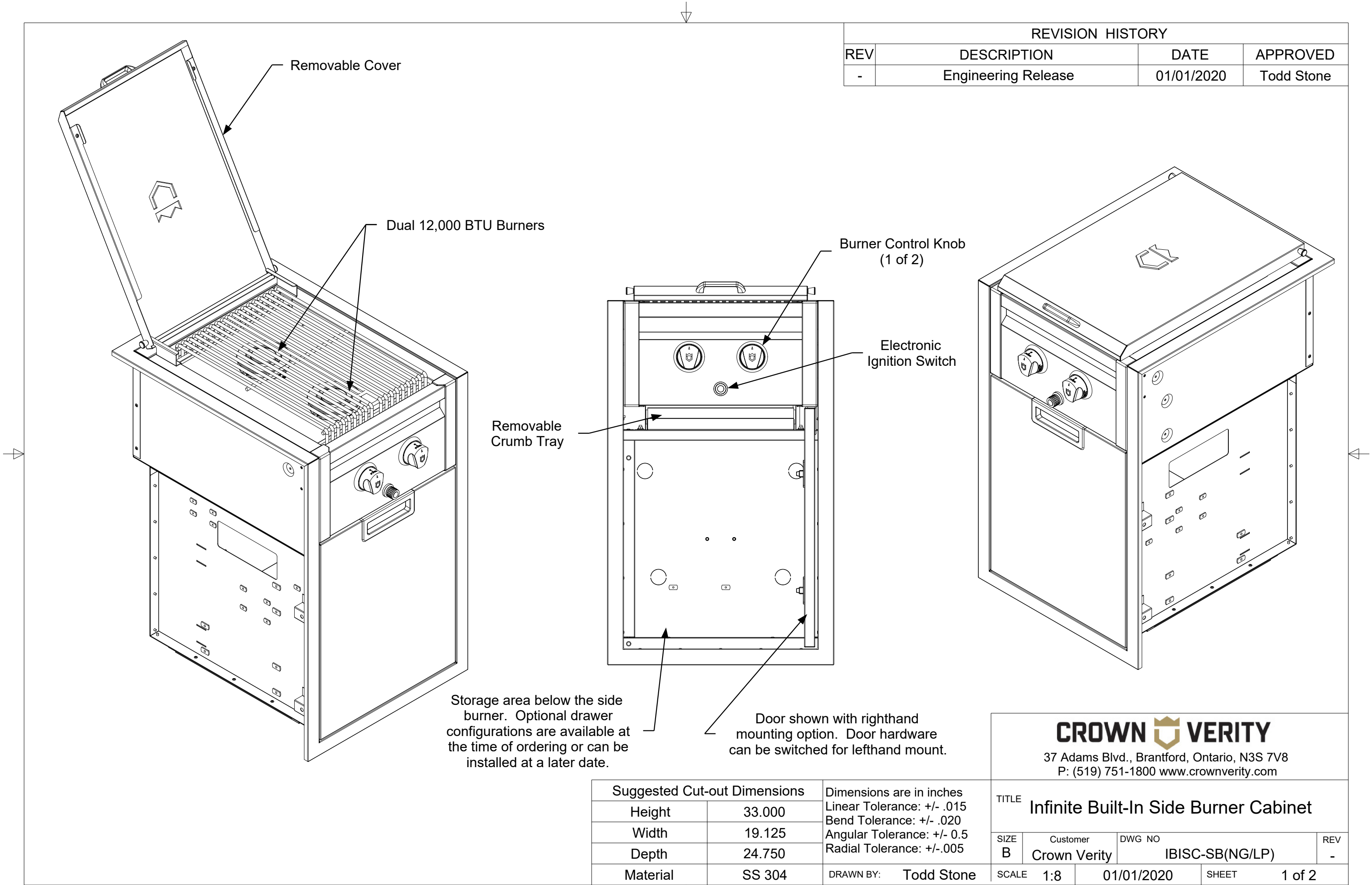


REVISION HISTORY			
REV	DESCRIPTION	DATE	APPROVED
-	Engineering Release	01/01/2020	Todd Stone





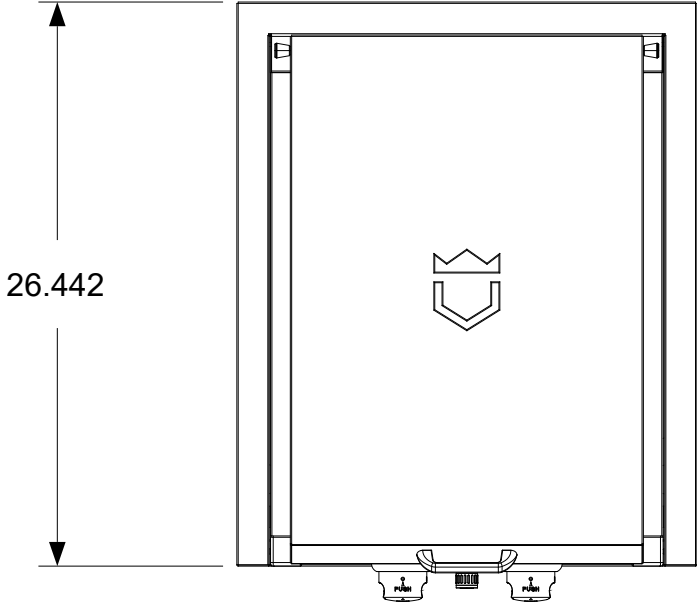
37 Adams Blvd., Brantford, Ontario, N3S 7V8
P: (519) 751-1800 www.crownverity.com

Suggested Cut-out Dimensions		Dimensions are in inches Linear Tolerance: +/- .015 Bend Tolerance: +/- .020 Angular Tolerance: +/- 0.5 Radial Tolerance: +/- .005
Height	33.000	
Width	19.125	
Depth	24.750	
Material	SS 304	DRAWN BY: Todd Stone

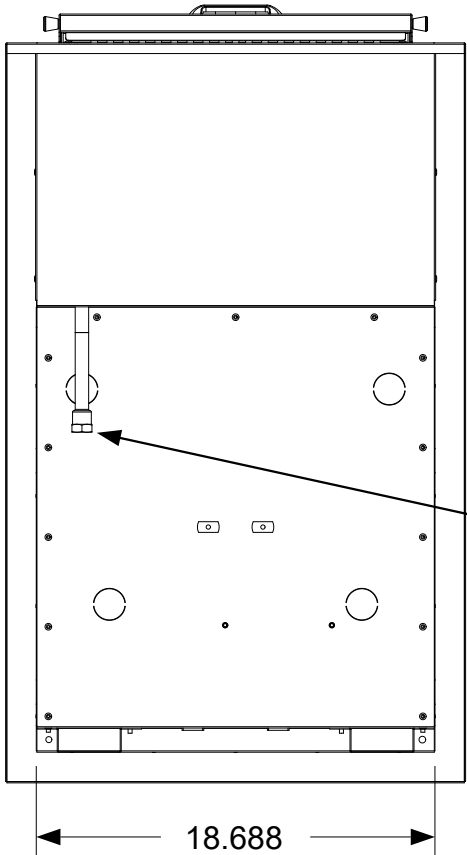
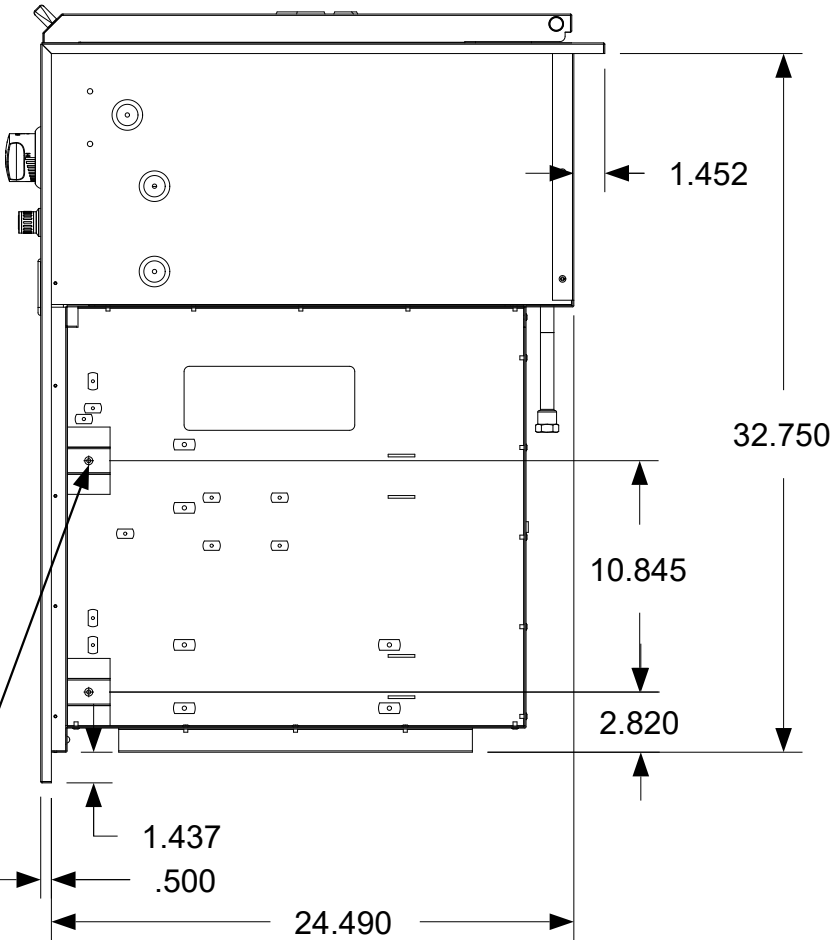
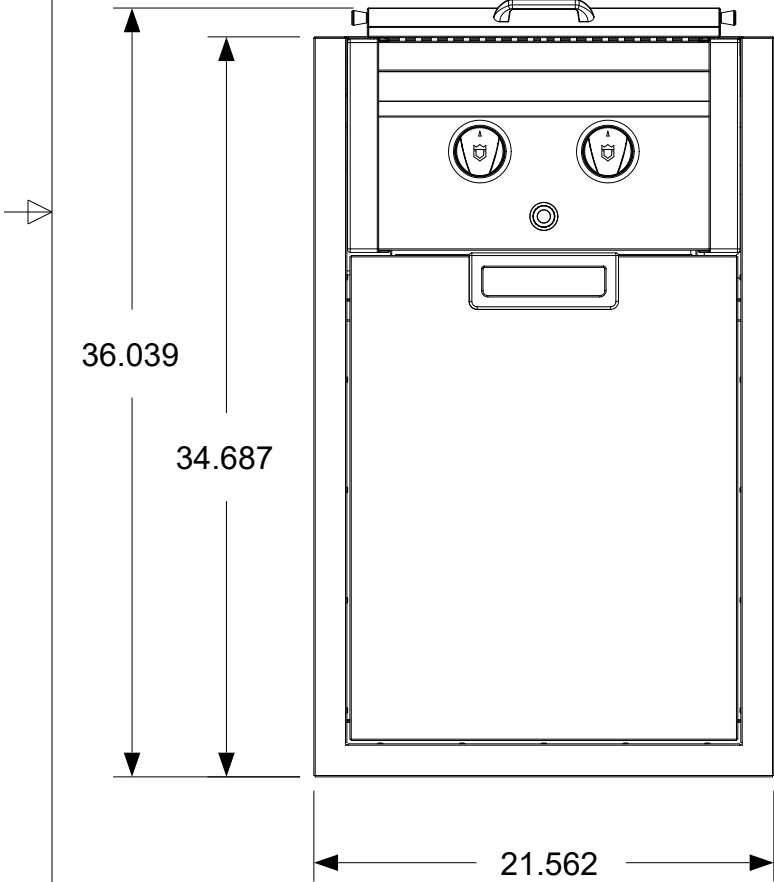
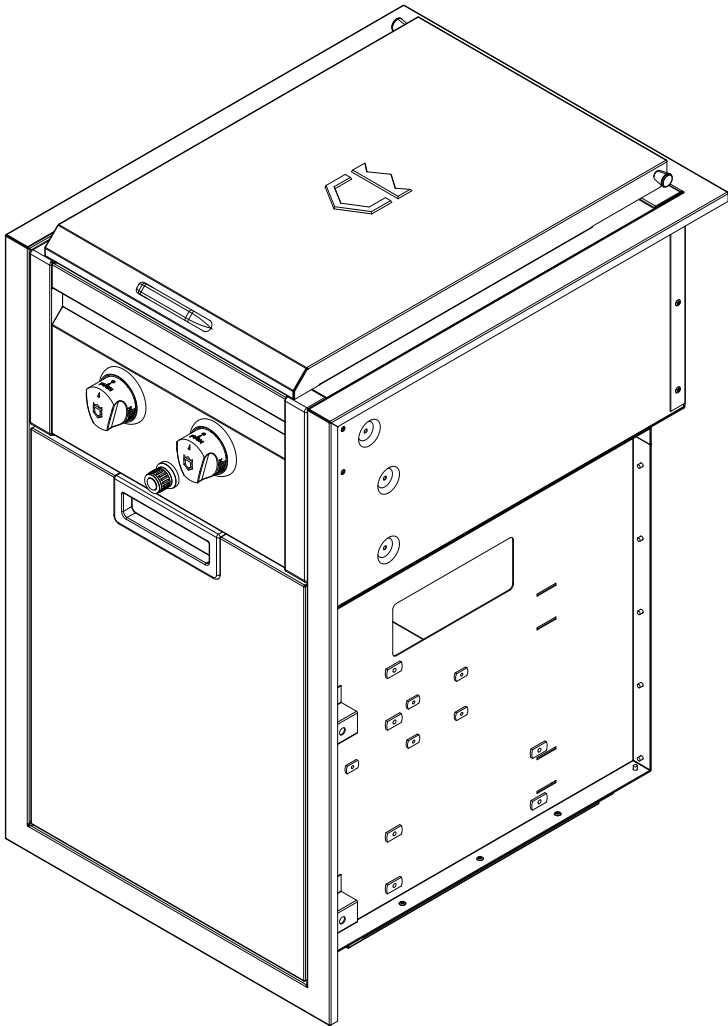
TITLE Infinite Built-In Side Burner Cabinet			
SIZE B	Customer Crown Verity	DWG NO IBISC-SB(NG/LP)	REV -
SCALE 1:8	01/01/2020	SHEET 1 of 2	



REVISION HISTORY			
REV	DESCRIPTION	DATE	APPROVED
-	Engineering Release	01/01/2020	Todd Stone



Dimensions shown are actual physical dimensions. Additional clearances to the cabinetry are dependent on the tolerances of the cut-out. The suggested cut-out dimensions are listed in the chart below but these dimensions can be reduced if the tolerances are controlled. Please refer to the installation manual for additional clearances to combustibles and installation instructions.



Gas connection for Natural Gas or Bulk Propane installations

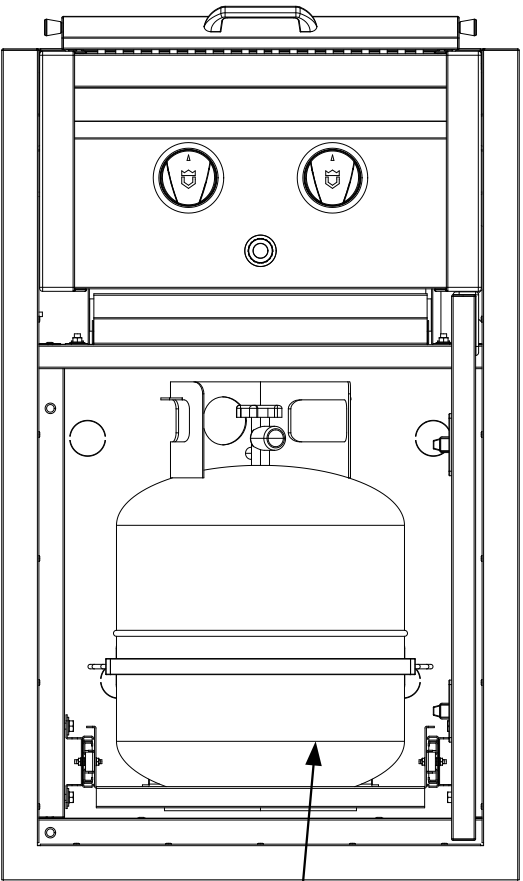
Through hole mounting point for cabinet installation

Suggested Cut-out Dimensions		Dimensions are in inches Linear Tolerance: +/- .015 Bend Tolerance: +/- .020 Angular Tolerance: +/- 0.5 Radial Tolerance: +/- .005
Height	33.000	
Width	19.125	
Depth	24.750	
Material	SS 304	DRAWN BY: Todd Stone

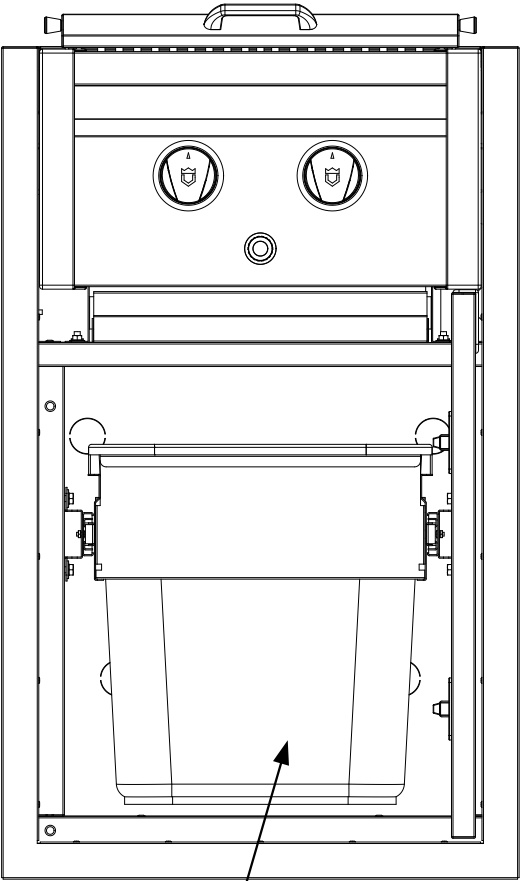
CROWN VERITY			
37 Adams Blvd., Brantford, Ontario, N3S 7V8 P: (519) 751-1800 www.crownverity.com			
TITLE Infinite Built-In Side Burner Cabinet			
SIZE B	Customer Crown Verity	DWG NO IBISC-SB(NG/LP)	REV -
SCALE 1:9	01/01/2020	SHEET 2 of 3	



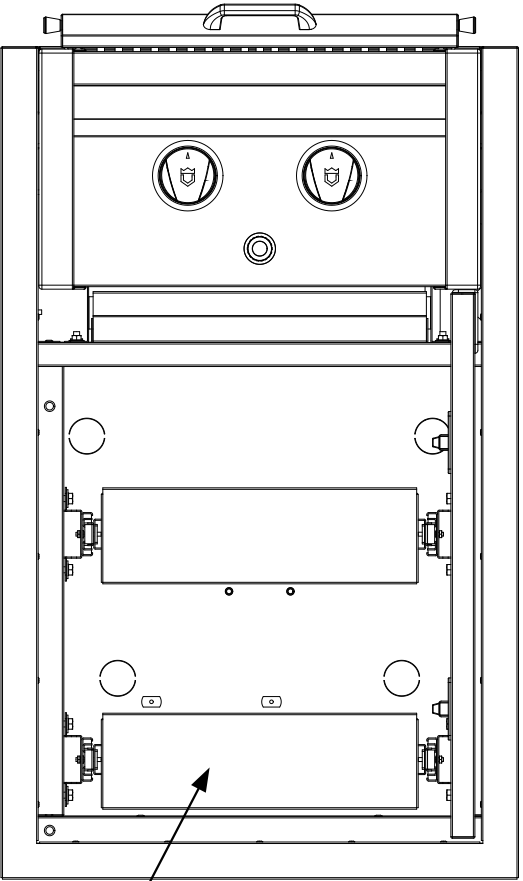
REVISION HISTORY			
REV	DESCRIPTION	DATE	APPROVED
-	Engineering Release	01/01/2020	Todd Stone



For LP applications that are not connected to a bulk supply, a pull-out tank drawer is factory installed along with a hose and regulator assembly to attach to a 20 lbs. tank (not supplied)



Storage area below side burner is shown with the optional garbage drawer



Storage are below the side burner is shown with the optional utility drawer. The cabinet can accommodate a single or dual drawer as shown

Suggested Cut-out Dimensions		Dimensions are in inches Linear Tolerance: +/- .015 Bend Tolerance: +/- .020 Angular Tolerance: +/- 0.5 Radial Tolerance: +/- .005
Height	33.000	
Width	19.125	
Depth	24.750	
Material	SS 304	DRAWN BY: Todd Stone

CROWN VERITY			
37 Adams Blvd., Brantford, Ontario, N3S 7V8 P: (519) 751-1800 www.crownverity.com			
TITLE Infinite Built-In Side Burner Cabinet			
SIZE B	Customer Crown Verity	DWG NO IBISC-SB(NG/LP)	REV -
SCALE 1:8	01/01/2020		SHEET 3 of 3