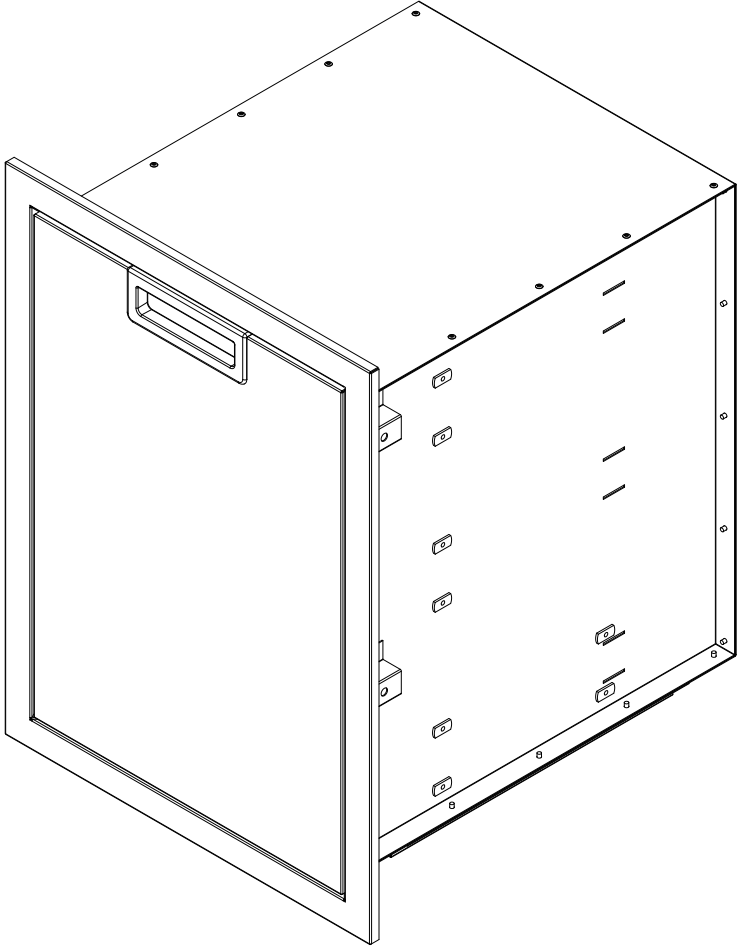
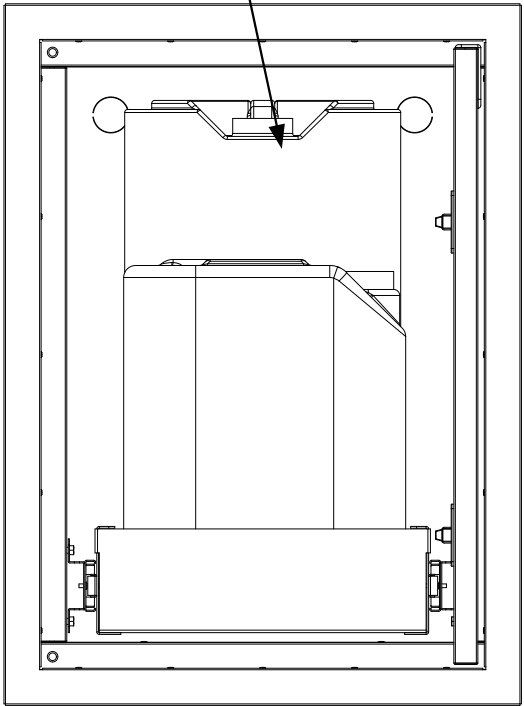
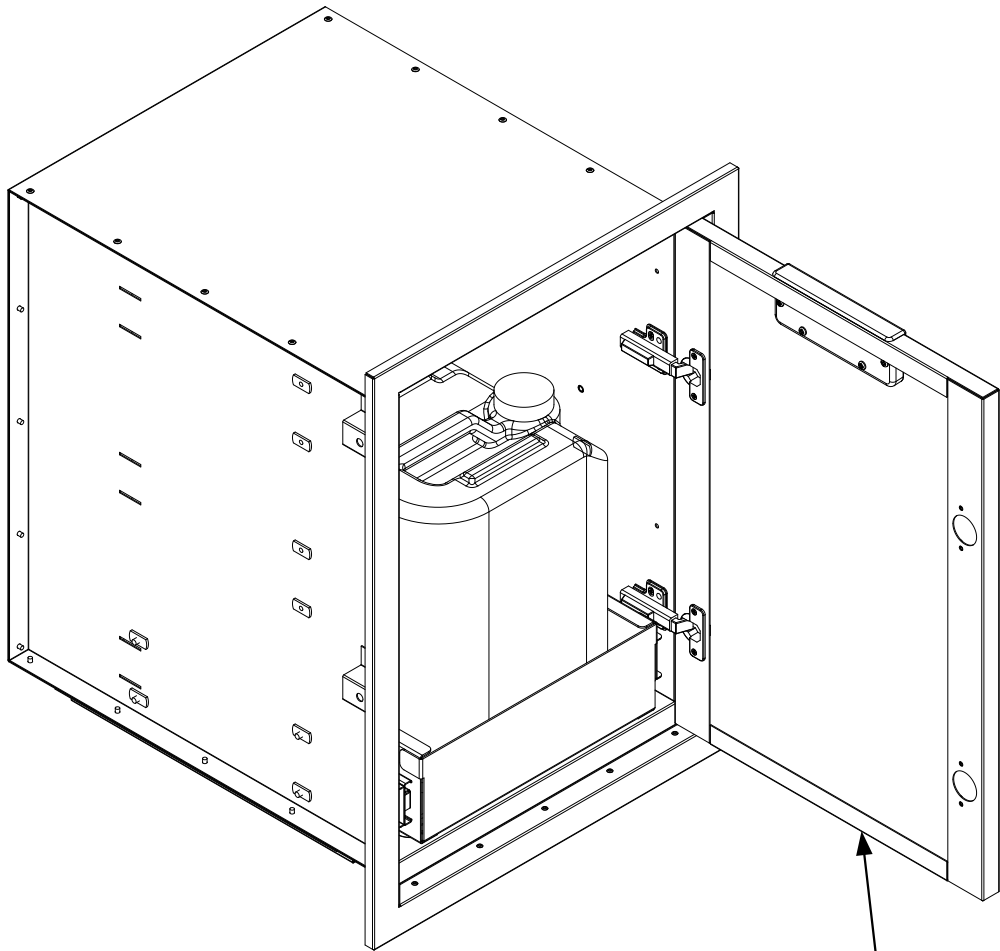


REVISION HISTORY			
REV	DESCRIPTION	DATE	APPROVED
-	Engineering Release	01/01/2020	Todd Stone

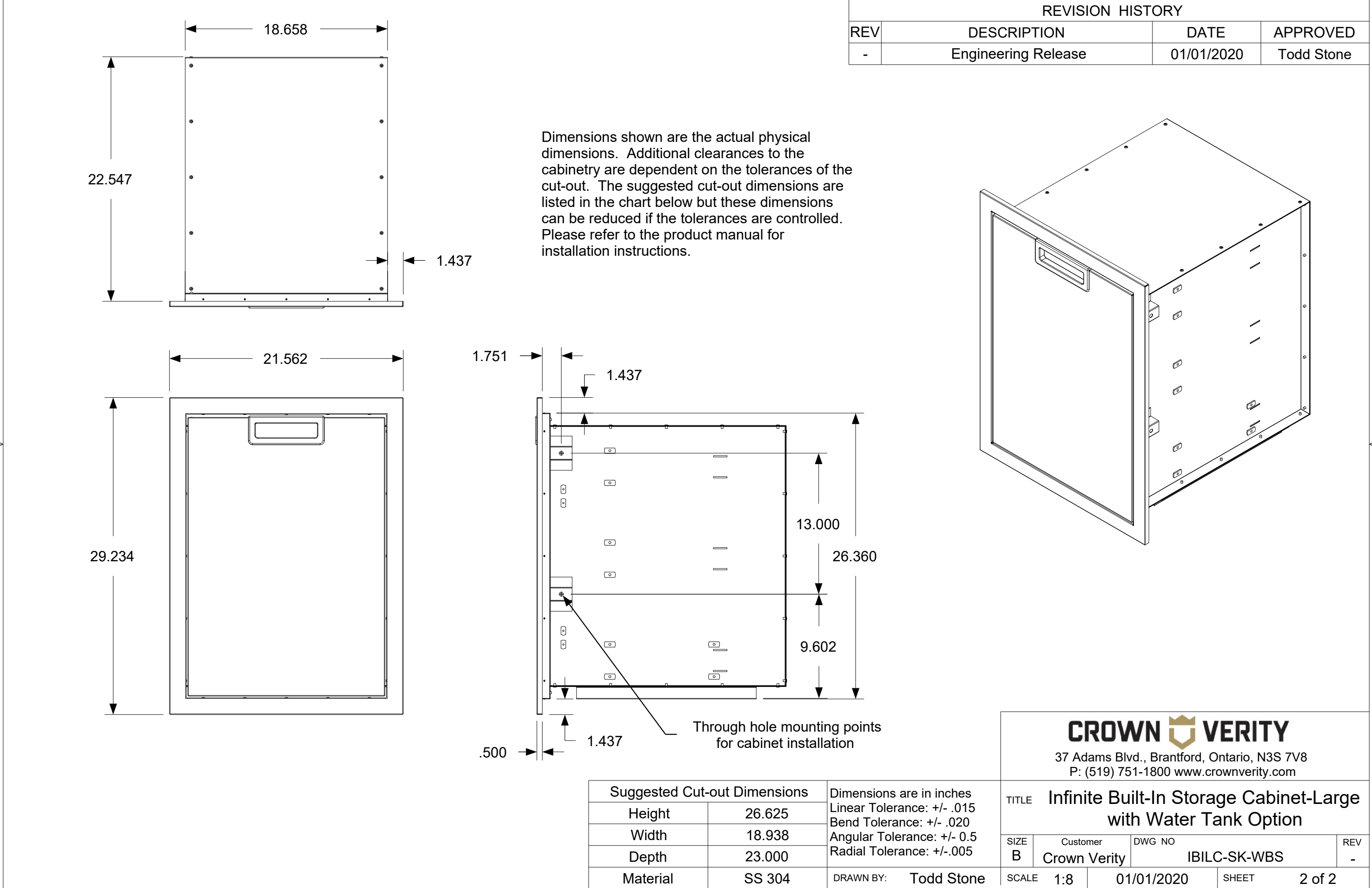
Water Tank drawer shown. To be used in conjunction with the built-in sink option ( IBISC-SK ) when water and waste are not plumbed directly.



Door shown with righthand mounting option. Door hardware can be switched for a lefthand mount

Suggested Cut-out Dimensions		Dimensions are in inches Linear Tolerance: +/- .015 Bend Tolerance: +/- .020 Angular Tolerance: +/- 0.5 Radial Tolerance: +/- .005
Height	26.625	
Width	18.938	
Depth	23.000	
Material	SS 304	DRAWN BY: Todd Stone

CROWN VERITY			
37 Adams Blvd., Brantford, Ontario, N3S 7V8 P: (519) 751-1800 www.crownverity.com			
TITLE Infinite Built-In Storage Cabinet-Large with Water Tank Option			
SIZE B	Customer Crown Verity	DWG NO IBILC-SK-WBS	REV -
SCALE 1:8	01/01/2020	SHEET 1 of 2	



REVISION HISTORY			
REV	DESCRIPTION	DATE	APPROVED
-	Engineering Release	01/01/2020	Todd Stone

Dimensions shown are the actual physical dimensions. Additional clearances to the cabinetry are dependent on the tolerances of the cut-out. The suggested cut-out dimensions are listed in the chart below but these dimensions can be reduced if the tolerances are controlled. Please refer to the product manual for installation instructions.

**CROWN VERITY**  
37 Adams Blvd., Brantford, Ontario, N3S 7V8  
P: (519) 751-1800 [www.crownverity.com](http://www.crownverity.com)

TITLE

Infinite Built-In Storage Cabinet-Large  
with Water Tank Option

SIZE

B

Customer

Crown Verity

DWG NO

IBILC-SK-WBS

REV

-

SCALE

1:8

01/01/2020

SHEET

2 of 2

Suggested Cut-out Dimensions		Dimensions are in inches Linear Tolerance: +/- .015 Bend Tolerance: +/- .020 Angular Tolerance: +/- 0.5 Radial Tolerance: +/- .005
Height	26.625	
Width	18.938	
Depth	23.000	
Material	SS 304	DRAWN BY: Todd Stone