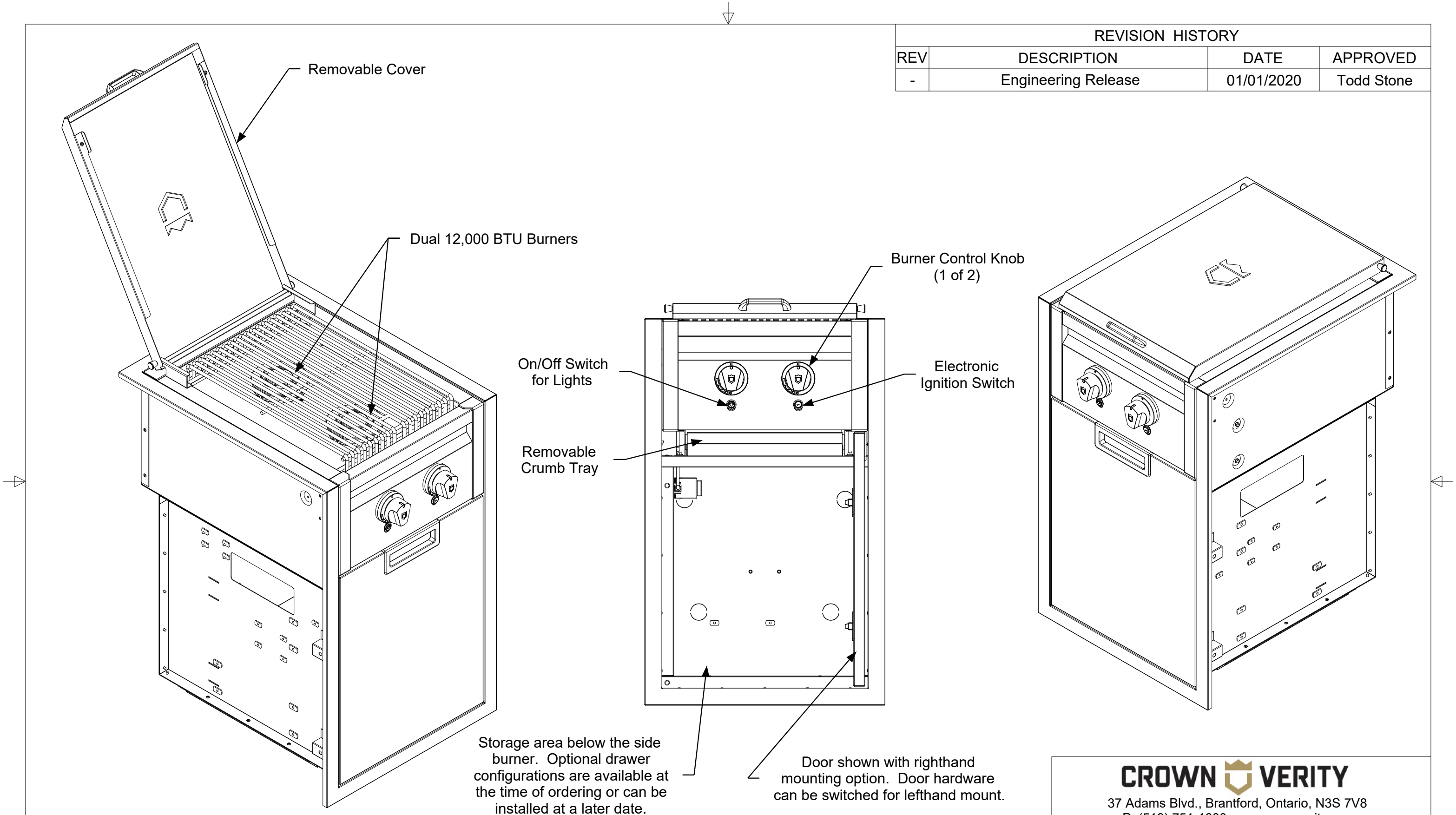


REVISION HISTORY			
REV	DESCRIPTION	DATE	APPROVED
-	Engineering Release	01/01/2020	Todd Stone



Storage area below the side burner. Optional drawer configurations are available at the time of ordering or can be installed at a later date.

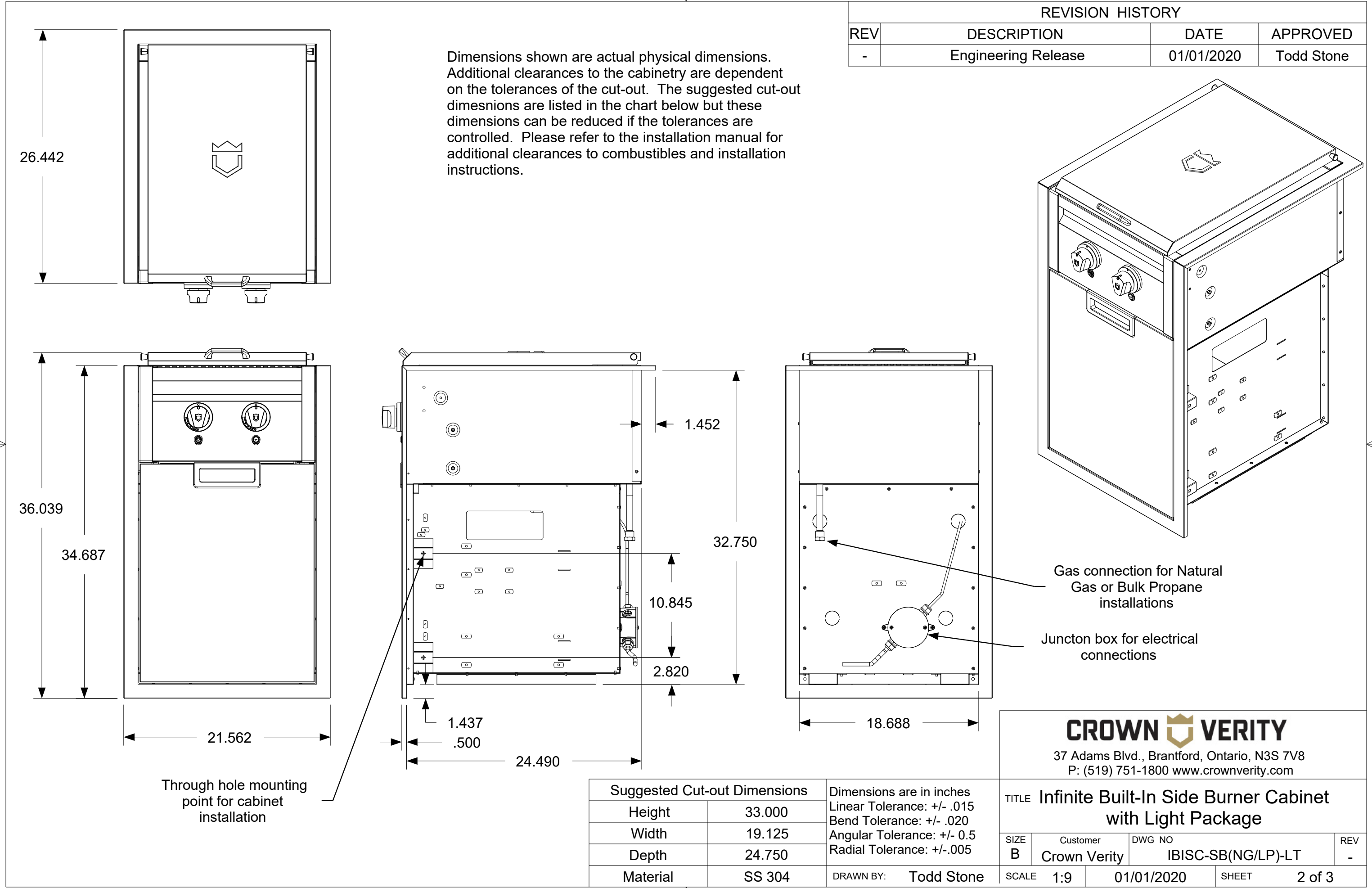
Door shown with righthand mounting option. Door hardware can be switched for lefthand mount.



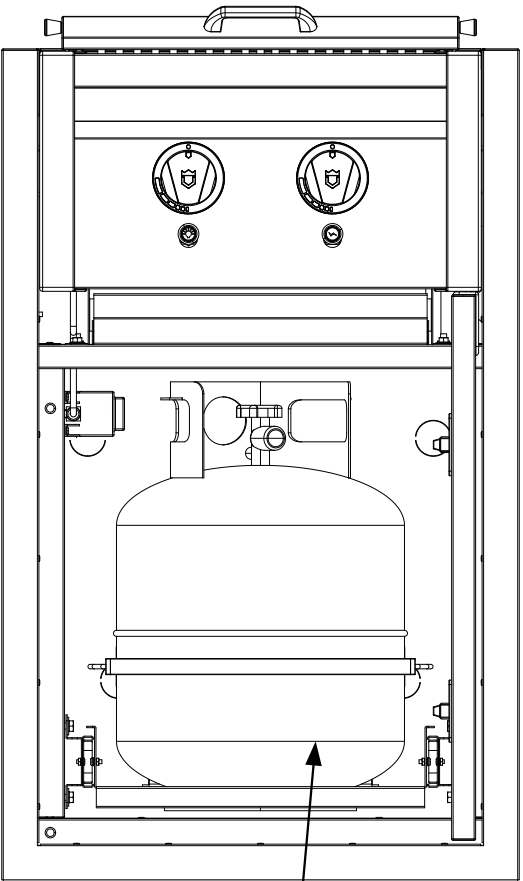
37 Adams Blvd., Brantford, Ontario, N3S 7V8  
P: (519) 751-1800 [www.crownverity.com](http://www.crownverity.com)

Suggested Cut-out Dimensions		Dimensions are in inches Linear Tolerance: +/- .015 Bend Tolerance: +/- .020 Angular Tolerance: +/- 0.5 Radial Tolerance: +/- .005
Height	33.000	
Width	19.125	
Depth	24.750	
Material	SS 304	DRAWN BY: Todd Stone

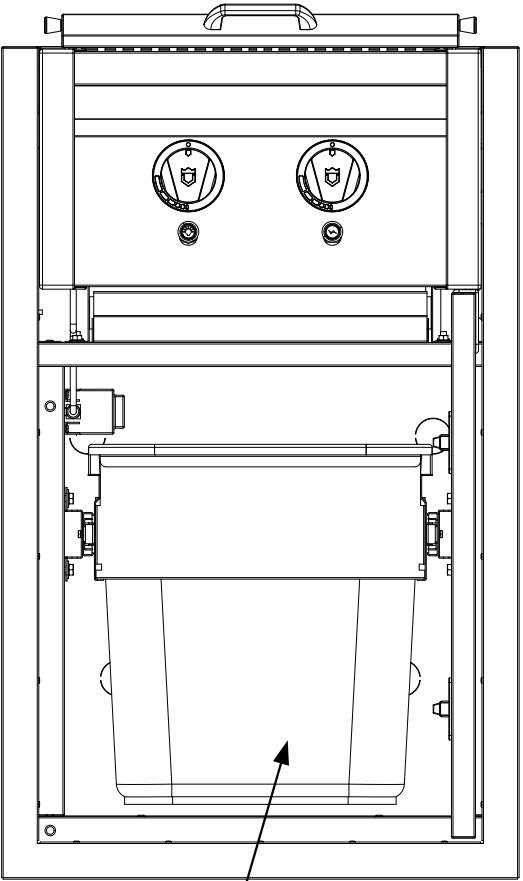
TITLE Infinite Built-In Side Burner Cabinet with Light Package			
SIZE B	Customer Crown Verity	DWG NO IBISC-SB(NG/LP)-LT	REV -
SCALE 1:8	01/01/2020	SHEET 1 of 2	



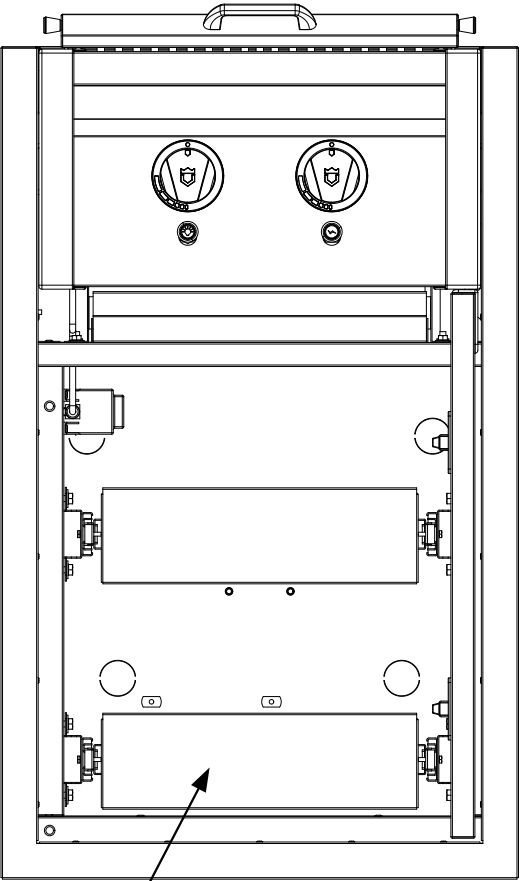
REVISION HISTORY			
REV	DESCRIPTION	DATE	APPROVED
-	Engineering Release	01/01/2020	Todd Stone



For LP applications that are not connected to a bulk supply, a pull-out tank drawer is factory installed along with a hose and regulator assembly to attach to a 20 lbs. tank (not supplied)



Storage area below side burner is shown with the optional garbage drawer



Storage area below the side burner is shown with the optional utility drawer. The cabinet can accommodate a single or dual drawer as shown

Suggested Cut-out Dimensions		Dimensions are in inches Linear Tolerance: +/- .015 Bend Tolerance: +/- .020 Angular Tolerance: +/- 0.5 Radial Tolerance: +/- .005
Height	33.000	
Width	19.125	
Depth	24.750	
Material	SS 304	DRAWN BY: Todd Stone

<b>CROWN VERITY</b> 37 Adams Blvd., Brantford, Ontario, N3S 7V8 P: (519) 751-1800 www.crownverity.com			
TITLE Infinite Built-In Side Burner Cabinet with Light Package			
SIZE B	Customer Crown Verity	DWG NO IBISC-SB(NG/LP)-LT	REV -
SCALE 1:8	01/01/2020		SHEET 3 of 3