



SCHOOL STREETS

A step-by-step guide for
schools and communities



BEE NETWORK



Transport for
Greater Manchester

What is a School Street?

A School Street makes it safer for students to walk, wheel, scoot or cycle to and from school by restricting access to motorised vehicles, with a Traffic Regulation Order and related signage, to make the road(s) outside the school a pedestrian and cyclist zone only at drop-off and pick-up times during school terms.

School Streets aim to create a pleasant, safe and child-friendly environment around schools, while making sure that essential access to the area is still possible. Each School Street is set up in a way that suits the needs of the school and local community.



Benefits of School Streets

- The School Street becomes safer for all road users by restricting vehicle access and enabling pupils to walk, wheel, scoot or cycle.
- Children and parents are encouraged to travel actively and sustainably, which promotes healthier lifestyles.
- Travelling actively can help to improve a pupil's behaviour, concentration, and mental health.
- The community becomes better connected as the environment around the school becomes cleaner, calmer and safer.
- Journeys become quicker and more reliable, with fewer vehicles and less congestion at drop-off and pick-up times.
- Children's health will be improved as a result of fewer vehicles on the road and a reduction in air pollution.



Driving children to school accounts for approximately **31% of traffic** on GM roads during peak times of day.



Building the case for a School Street at your school

Not all schools are suitable for a School Street. This may be due to where the school is located, the community it serves or the connecting roads.

If you feel your school is suitable, why not start building your case?

Here are four things to consider, including information that you can collect. This can then be shared with your local authority:

- 1** What traffic and parking issues does the school have? Can you evidence these?
- 2** Talk to others. Do the school staff, pupils, residents and ward members know about School Streets, and would they support the scheme?
- 3** Talk to your pupils and understand their opinions. Conduct a Hands Up Survey to find out how your pupils currently travel to school, and how they would prefer to travel to school.
- 4** Ensure your school has a travel plan and conduct some school route audits, making note of any popular routes or crossing points.



Want to start a School Street? First things first...

A School Street is a great way of enabling more children to walk, wheel or scoot safely to and from school, but it's one piece of the puzzle.

As a school, parent or member of the community, there is a lot that you can do to encourage pupils and others to travel actively to your school:

1 Sign up to Modeshift STARS

Modeshift STARS is a nationally accredited online travel planning toolkit where schools can create a school travel plan. It will also help you to identify and address transport issues, understand how your pupils currently travel, and track any active travel initiatives that the school takes part in.

Register for STARS at www.modeshift.org.uk/modeshift-stars
For more information, contact active.travel@tfgm.com

2 Read our school run resources

The Road Safety Champion Handbook helps teach students how to remain safe whilst travelling.

Find out more at tfgm.com/safer-roads/road-safety-champions

3 Set up a Park and Stride for your school

Is there a local supermarket, place of worship or business near your school with a large car park? Get in touch and ask their permission to use it as a Park and Stride for your school so that families who can't walk the whole way have the option to park up and walk, wheel or scoot from there.

4 Create a map of the area around your school with TfGM's help

TfGM can help you to create a free map showing what's within a 5-minute and 10-minute walk of your school, as well as showing popular walking routes and Park and Stride locations in the area. For more information, contact active.travel@tfgm.com

5 Take part in Living Streets WOW Travel Tracker

WOW is a pupil-led initiative, where children share how they get to school each day using the interactive WOW Travel Tracker. If they travel sustainably (walk, wheel, cycle or scoot) once a week for a month, they get rewarded with a badge.

For more information visit livingstreets.org.uk



6 Sign up to TfGM's Youth Travel Ambassador programme

Secondary schools across Greater Manchester can take part in TfGM's Youth Travel Ambassador programme, where pupils are empowered with the skills and confidence to identify and address the transport issues that affect their school community.

Head to beeactive.tfgm.com or email active.travel@tfgm.com for more information.



7 Sign up to Bikeability training

Bikeability is the Department for Transport's national cycle training programme, available all year-round for school children in England.

Make sure your school is signed up and equip your pupils with the skills for a lifetime of cycling.

Find out more at bikeability.org.uk



8 Encourage adults to sign up for TfGM's free and subsidised cycle training sessions

Whether an absolute beginner, needing to build up confidence or looking to learn how to fix your bike, TfGM offers free and subsidised cycle training and maintenance courses to anyone aged 12+.

More information can be found at beeactive.tfgm.com



9 Set up a bike bus

Are you a parent, guardian or member of the community who wants to encourage children to cycle? Join forces with others and set up your own bike bus, helping children cycle safely together as a group.

Visit sustrans.org.uk for tips on how to get started.



10 Set up a walking bus

If you don't own a bike or can't cycle yet – why not set up a walking bus instead? Choose a start point and time and make the journey to school together as a team!



Your school has been selected for a School Street scheme = what next?

Step 1

Meet with your local authority officers

- Share all the evidence and data you have collected when building your case.
- Conduct a site audit and feasibility study with the local authority officer.*
 - How many road closure points will you have?
 - Where should the road be closed?
 - How will the road be closed?
 - What other issues could this cause?
- Identify opportunities nearby the school to set up a Park and Stride, if you haven't already.

*If you have already carried out a school route audit with your pupils, it is important to bring this evidence along to the meeting. It'll help to understand pupils' perspectives and include them in the conversation too.





Step 2

Understand roles
and responsibilities

Work closely with your local authority to decide how your School Street will be enforced and what signage, barriers and equipment will be needed.*

What are schools responsible for?

- Marshalling the road closure, if required.
- Organising any volunteer marshals where needed.
- Collecting Hands Up Survey data termly and uploading to Modeshift Stars.
- Promoting and disseminating information and surveys via multiple channels.
- Communicating with the local authority and providing feedback during the trial stage.
- Hosting active travel activities at the school.

What are local authorities responsible for?

- Providing marshal training and risk assessments.
- Providing equipment, signage, banners, flyers and some communication materials.
- Managing vehicle exemptions.
- Assisting with resources and supporting the school with Modeshift STARS travel plans and accreditation.
- Regular check-ins and support for at least the first six months.
- All processes relating to the Traffic Regulation Order (TRO).

*The School Street will initially be set up for a trial period using an Experimental Traffic Regulation Order (ETRO), which can last up to 18 months. During the trial phase, a School Street can be changed or amended to better suit the needs of the pupils, the school and the local community. It's important to share information and feedback with your local authority during this time.

Step 3

Engaging with
parents, residents,
ward members and
stakeholders

Once the local authority has agreed to a start date and where the restricted access will be, it is important to start sharing the news! Talk to as many pupils, parents, guardians, residents and ward members as possible.*

- Promote your School Street:
 - Send a letter and emails to parents.
 - Invite residents to a meeting.
 - Include the news in your school newsletter.
- Create maps with the help of TfGM and share them with pupils, parents and carers. The maps can show your school within a 5-minute and 10-minute walking bubble.
- Promote the use of a Park and Stride.
- Work with parents to help them find new routes to school.
- Engage with your pupils and share the benefits of travelling actively.

*Your local authority might also help you to organise a one-day trial prior to launching, so that your school community can understand what the School Street will be like.

Step 4

Preparation time!
Get ready for the
School Street launch

- If you are running the School Street with marshals, your local authority will send hi-vis, signage and equipment to the school, so make sure you have somewhere safe to store these items.
- Nominate your marshals and make sure they have all been fully trained.
- Work with the local authority to ensure that risk assessments are in place.
- Work with your local authority to organise a launch event or party on the street, to celebrate the first day of the scheme.

Step 5

Launching your School Street

Start your School Street with a big celebration and see how safer, quieter roads help to transform the school run and improve physical and mental wellbeing!





Step 6

Feedback time:
reviewing the scheme

During the first few months of your School Street, it is important to regularly feedback to your local authority and discuss any issues.

- Get ready for public consultation by:
 - Sending out surveys to parents.
 - Providing some before and after photos of the street.
 - Collecting student feedback. Are your children happier, safer, more ready to learn?
- Consider how the scheme might be improved:
 - Are the timings right or do these need to be amended?
 - Are there issues with people parking elsewhere?
 - Is the way of enforcing the scheme sustainable and suitable in the long-term?

*Following a formal public consultation period, the Experimental Traffic Regulation Order will become a Permanent Traffic Regulation Order (PTRO), and the School Street will become permanent.

Step 7

Celebrate
your success

- Conduct a Hands Up Survey to understand how many of your pupils are now travelling actively to school and learn what a difference your School Street has made.
- Celebrate and thank your marshals.
- Throw a birthday party for your School Street.
- Consider how to integrate the School Street into your school policies to keep momentum going and ensure long-term success.
- Continue to promote active travel at your school to change the travel behaviours of pupils, parents and carers and members of the surrounding community.

School Streets = a typical timeline

Each school and community are different, and so is each School Street! This guide shows how long the School Street process might take, but remember, there are many factors that can affect this. Make sure to keep in regular contact with your local authority to ensure that your School Street keeps running smoothly.

Year 1

Year 2 and beyond!

Term 1

Term 2

Term 3

Identify and promote the benefits of School Streets

Having a School Street will enable your school community to travel more actively and feel safer. Identify members of your community that can help support and promote your School Street.

Meet with your local authority officers

Share the evidence you collected when building your case, conduct a site audit and discuss Park and Stride opportunities.

Understand roles and responsibilities

Decide how you will work together with your local authority to make the scheme a success. Decide how the School Street will be enforced and what signage, safety barriers and equipment will be needed, and consider how the scheme will best suit the needs of your school and community.

Preparation time! Get ready for the School Street launch

If you are using marshals, make sure they are nominated, fully trained and comfortable with their duties. Check the local authority has delivered the appropriate hi-vis clothing and signage needed.

Engage with pupils, parents, residents, ward members and other stakeholders

Once your local authority has agreed to a start date and where the restricted access will be, it is important to start spreading the news!

Let your community know when it'll begin, hand out flyers and letters, invite parents, carers and residents to assemblies or meetings, hand out maps and promote the use of any Park and Stride schemes.

Launch the School Street

Start your School Street with a big celebration and see how safer, quieter roads help get pupils walking, wheeling, scooting or cycling to and from school.

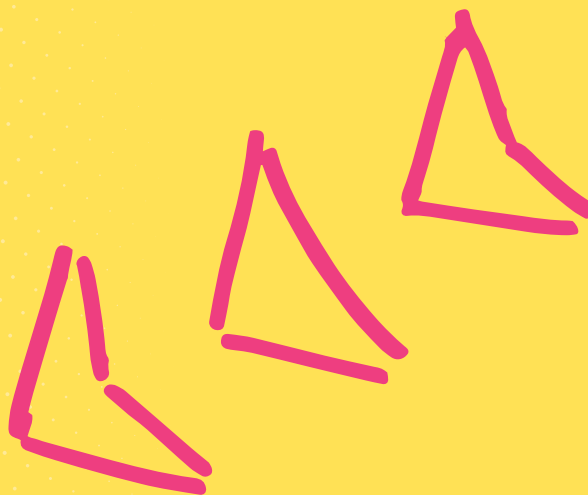
Feedback time: reviewing the scheme

Help your local authority to prepare for public consultation by providing them with data and helpful feedback on the scheme. This might include Hands Up Survey data, parent surveys, before and after photographs of the street and feedback from your pupils.

Celebrate success – you're helping to transform the school run!

Whether that's throwing an on-street party one year on, thanking your marshals or checking back with pupils to see what they think about their School Street. Make sure you continue to promote and share the benefits of walking, wheeling, scooting or cycling to school and improve the school run for everyone!





For further advice and information about starting a School Street in your area, visit [**beeactive.tfgm.com/support-for-schools/school-streets**](https://beeactive.tfgm.com/support-for-schools/school-streets)



BEE NETWORK



Transport for
Greater Manchester