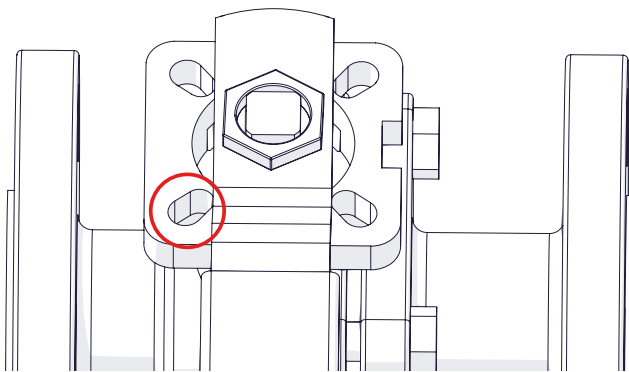
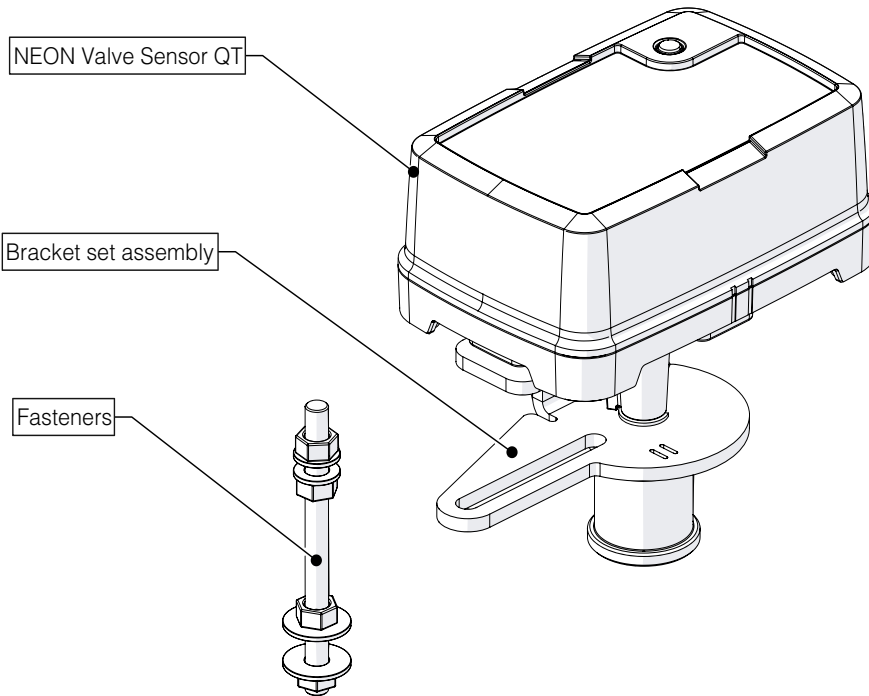
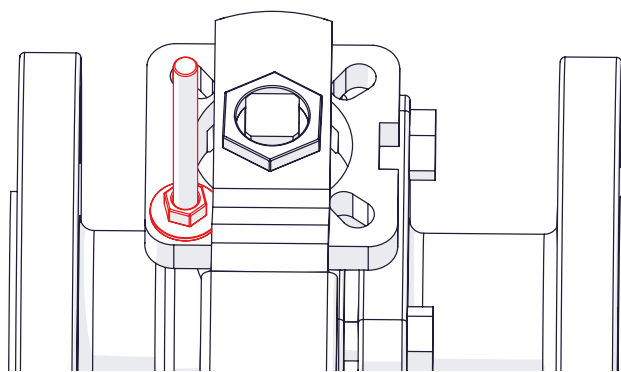


NEON Installation Manual

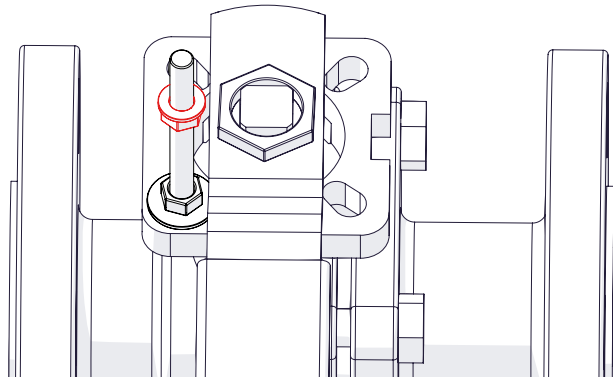
N01-01 Valve Sensor QT (Pilot)



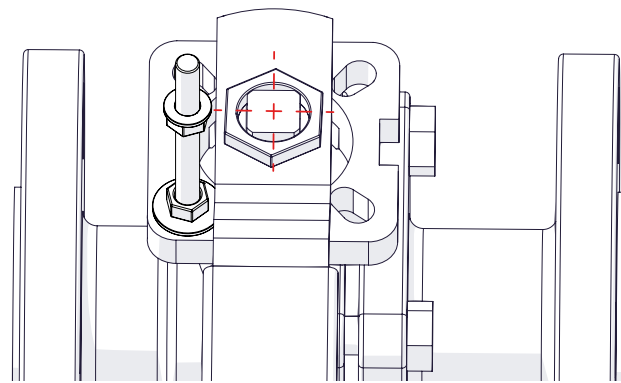
Valve Evaluation: Identify the end-stop on the valve's flange (alternative mounting holes may be utilized, provided they ensure continued operability of the valve following installation).



Step 1: Insert the M5 threaded rod (1x) into the mounting hole, using the M5 washers (2x) and M5 nuts (2x).



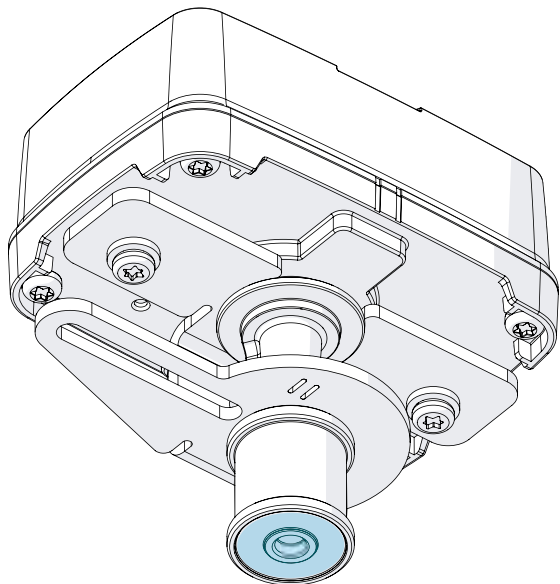
Step 2: Place an M5 washers (1x) and M5 nut (1x) onto the stem, these will be used to determine the height of the valve sensor in step 5.



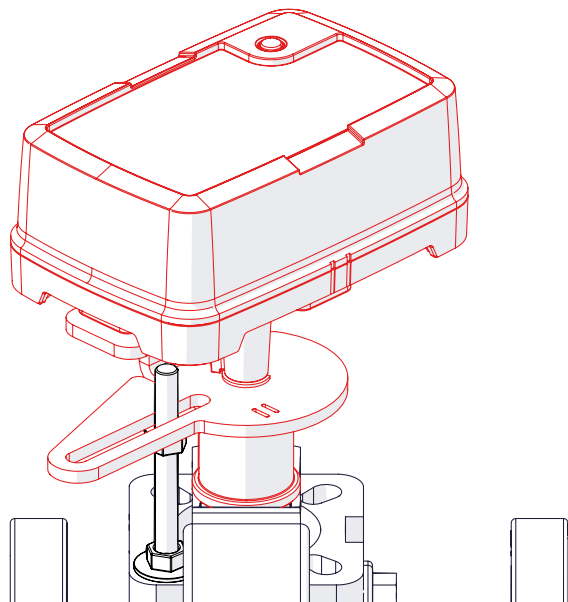
Valve Evaluation: The valve sensor shall be positioned precisely at the central point of the stem.

NEON Installation Manual

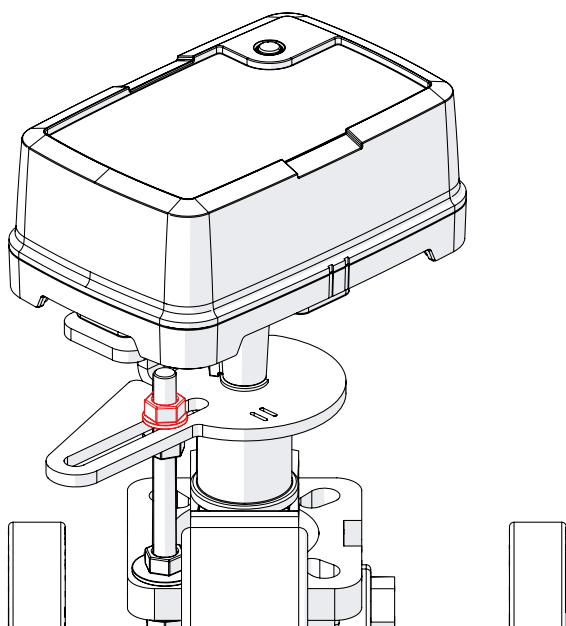
N01-01 Valve Sensor QT (Pilot)



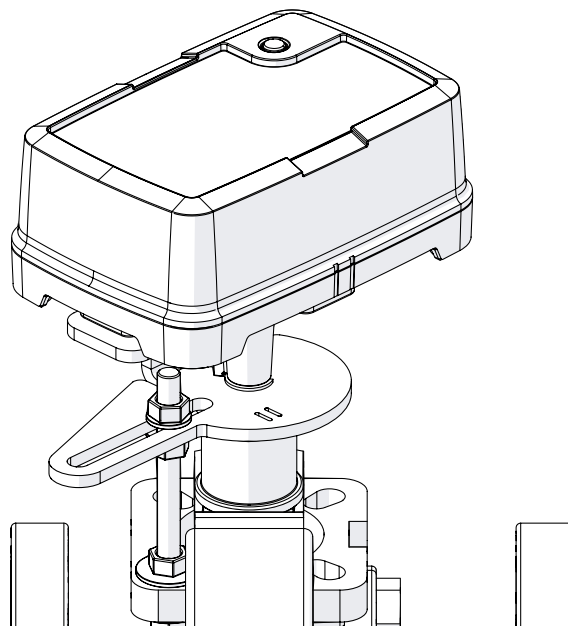
Step 3: Apply glue to the bottom of the valve sensor bracket, see designated area in blue (Use "3M DP8405 Green" Acrylic Adhesive and compatible dispenser products).



Step 4: Position the valve sensor bracket over the M5 threaded rod, ensuring that the body is perfectly centered on the stem, and secure it in place. Let the adhesive cure for the time as stated in the "3M Scotch Weld Epoxy Datasheet"



Step 5: Securely fasten the valve sensor in position by using two M5 nuts and two washers, both at the top and bottom of the bracket.



Valve sensor installation has been completed.