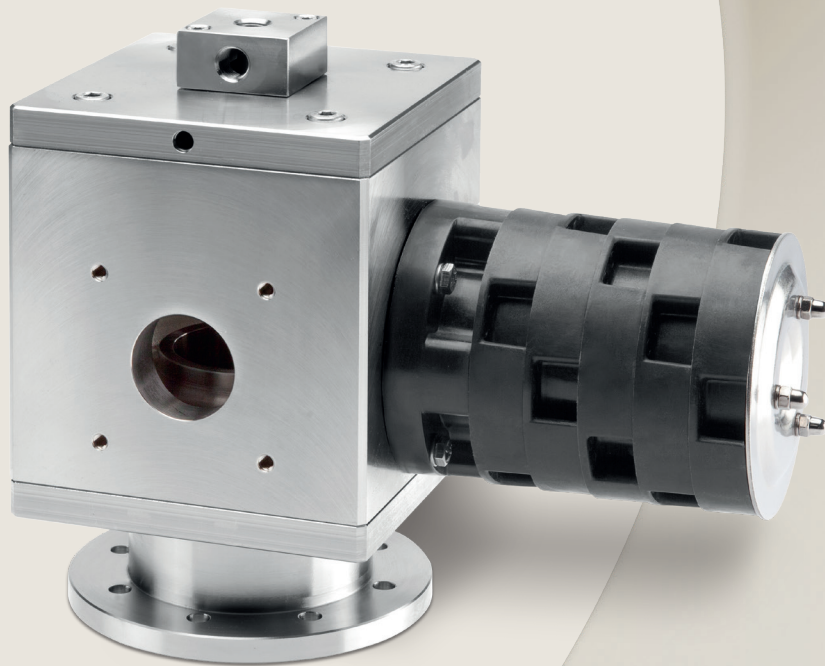


Process Automation

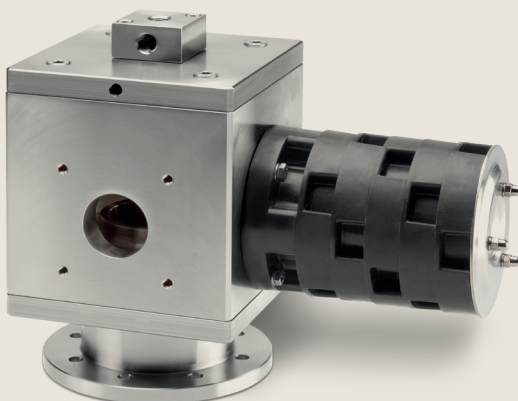
IMI STI

CS

Quick Exhaust



Breakthrough
engineering for
a better world



CS

Quick Exhaust

The Quick Exhaust (model CS) is a two-way valve used for on/off movement (trip or fail) to fully exhaust the connected chamber of the actuator. When this device is pilot operated and mounted on a modulating actuator it allows quick exhausting of the connected chamber, even when piloted by a small CV device.

Product features

Suitable for:
Standard, offshore,
sandstorm or copper-free
ambient conditions.

Single and double acting
actuators.
Low and high ambient
temperature.

Technical specifications

Housing materials
Anodised aluminium
Stainless steel 316

Actuator connections
Dedicated flange

CV max
Inlet = 60
Outlet = 20

Operating temperature*
-20°C to 70°C
-40°C to 70°C
-20°C to 85°C

Operating pressure
P min = 2.5 bar
P max = 7 bar
Design pressure = 10 bar

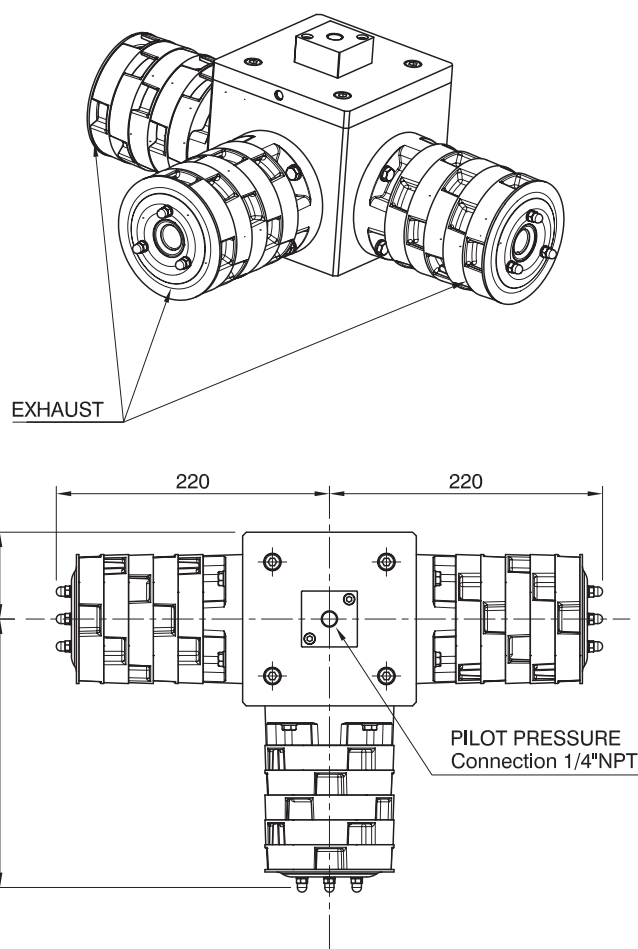
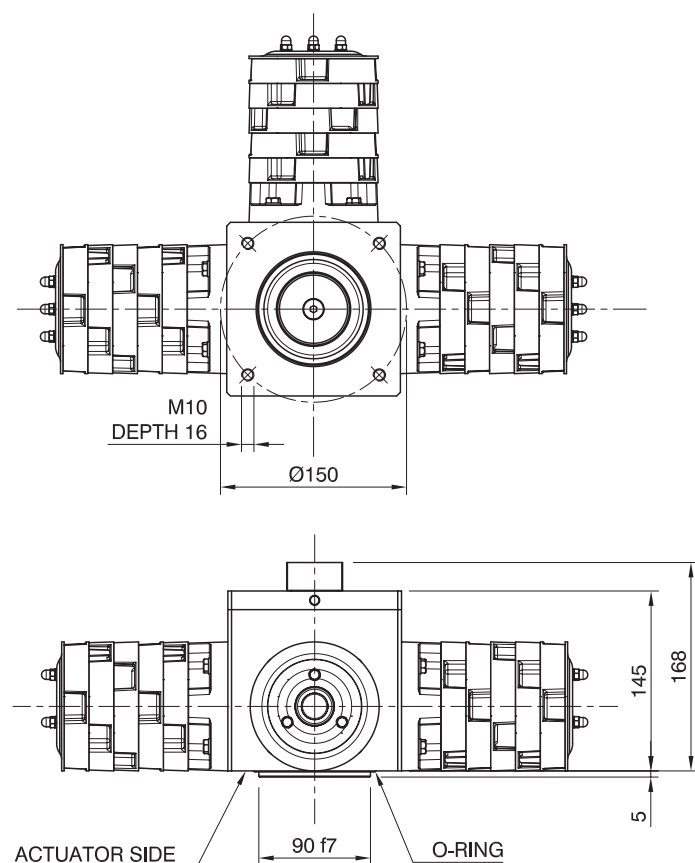
Exhaust connections
Dedicated to SL

Pilot signal connection
1/4" NPT

Weight
Aluminium = 5kg
Stainless steel 316 = 12.5kg

* Lower or higher temperature available on request.

Dimensional drawing



Benefits

Compact design.
Big exhaust CV (up to 60).
Metal piston operated
(diaphragm free).

Flange mounted on actuator
cap.
Suitable for internal actuator
damper.

Suitable for SL exhaust
protection system (from 1
to 3 max SL) depending on
exhaust flow requirement.

Process Automation

The information in this brochure is provided for general informational purposes only. Specifications for products and services are subject to change without prior notice. IMI plc and its subsidiaries own all product brands mentioned herein.

IMI makes no warranties or representations about the accuracy or completeness of the content in this brochure and assumes no liability for any errors or omissions it may contain. We reserve the right to modify, enhance, or discontinue any product or service described herein without prior notification.

IMI STI

Via dei Caravaggi, 15
24040 Levate (BG) ITALY
Tel: +39 035 2928.2
Fax: +39 035 2928.247

www.imiplc.com/process-automation

07050.02/24en

