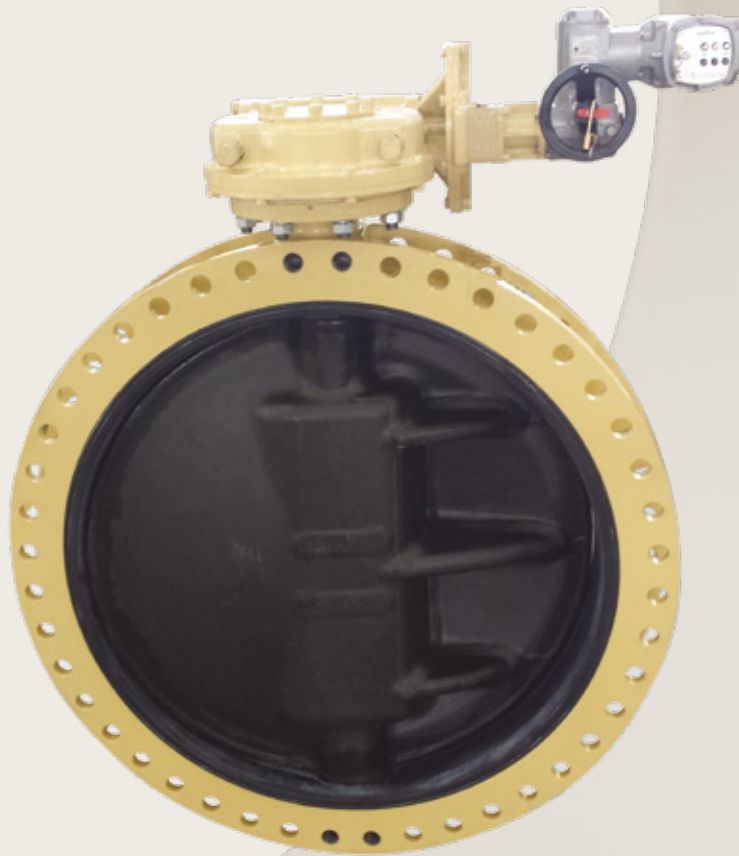




# Process Automation

IMI Orton



Breakthrough  
engineering for  
a better world

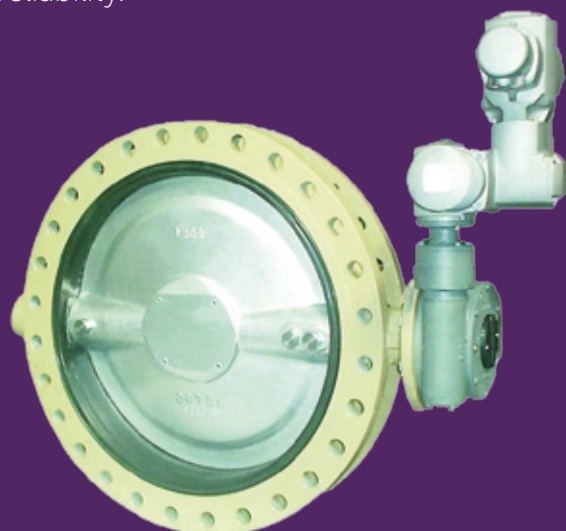


# DS Series Concentric Rubber Lined Valves

Our DS Series valves are specified worldwide for their unique sealing performance delivered by their robust rubber seat design and high quality construction materials. They are manufactured using stable and durable components to ensures long-term reliability.

## Key features

- Fully rated up to 20 bar
- Replaceable rubber liner
- Complete double seal protects stem
- from media
- Self-centering disc (up to 24")
- No pins or keys to connect disc (up to 24")
- Self-lubricating and resistant alloy bushings
- Wide range of materials available



Find out more  
[www.imiplc.com](http://www.imiplc.com)

## Benefits

The DS Series design is based upon the centered shaft concept to allow easy installation and maintenance. These features make the DS Series ideally suitable for small and large size valves where the cost of ownership needs to be kept to a minimum.

- Heavy duty service
- Easy installation and maintenance
- One-piece cast or fabricated design
- Rigid and heavy construction
- Leak free performance
- Replaceable rubber seat
- Critical components completely sealed from the media
- Unsurpassed stability and durability
- Zero chance of detachment, tearing or other inherent 'soft boot' seat failure
- Hydro-dynamically efficient disc profile
- Improves flow capability
- Reduces pressure drop and dynamic torque
- Customized specifications



Disc and shaft connection up to ND 24"



Disc and shaft connection over ND 24"

## Typical applications

- Utilities
- Air
- Water
- Fire fighting
- Sea water
- Slurry brine
- Hydrocarbons
- Sewer
- Geothermal water
- Demineralization of water



IMI Orton engineered solutions draw on the technological and financial backing of IMI plc which operates in over 50 countries.

## Product specification and dimensions

**Materials**  
Ductile iron  
Carbon steel  
Stainless steel  
Aluminium bronze  
High alloy titanium  
Nickel Alloy Steel

**Production range**  
Nominal diameter  
1-1/2" up to 108"

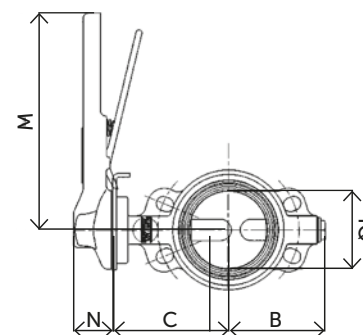
**Temperature limits**  
From -20°C (-4°F) up to +150°C (+302°F)

**Pressure limits**  
300 psi in accordance with UL 1091

**Applicable standards**  
Design:  
- ANSI B16.34/ ASME VIII/ API 609/ UL1091

**Face to face:**  
- API 609/ ISO 5752  
**Double Flanged Connection:**  
B16.5/ B16.47/ ASME VIII/ SIN/ ISO/ AWWA  
**Testing:**  
API 598

**Rating**  
PN 6-10  
ANSI Cl.150



## DS Wafer Type Valve with Lever Operator dimensions

SI Units		A	B	C	Øi	N	M	Ø Y	Weight (kg)
Nominal Diameter (in)	(mm)	(mm)	(mm)	(mm)	(mm)	(mm)	(mm)	(mm)	Wafer
11/2	40	33	79	98	46	36	225	-	3
2	50	44	88	109	56	36	225	-	4
21/2	65	47	95	122	71	36	225	-	4
3	80	46	111	131	83	36	225	-	5
4	100	53	120	152	104	36	225	-	5
5	125	57	137	177	128	36	280	-	9
6	150	57	151	193	152	36	280	-	10
8	200	60	189	225	198	36	280	-	11
10	250	69	226	274	246	51	305	-	22
12	300	79	258	297	298	51	305	-	33

**Other body styles available**  
Double flanged ("U" section)  
Wafer  
Lugged

# Process Automation

The information in this brochure is provided for general informational purposes only. Specifications for products and services are subject to change without prior notice. IMI plc and its subsidiaries own all product brands mentioned herein. IMI makes no warranties or representations about the accuracy or completeness of the content in this brochure and assumes no liability for any errors or omissions it may contain. We reserve the right to modify, enhance, or discontinue any product or service described herein without prior notification.

## IMI Orton

IMI plc

Orton Srl  
Plant 1: Via Dei Bazachi 50  
29121 Piacenza (PC) Italy

Plant 2: Via Grilli 2/A  
29010 S. Nicolò a Trebbia di Rottofreno (PC)  
Italy

[www.imiplc.com/process-automation](http://www.imiplc.com/process-automation)

05009.02/24en

