



Process Automation

IMI STI

BD

Derivative Booster



Breakthrough
engineering for
a better world



BD

Derivative Booster

The Derivative Booster (model BD) is used in conjunction with a positioner on a control valve to increase stroking speed on pneumatic double acting actuators. It has been designed to exhaust one actuator chamber and pressurize the other at the same time. In this way, a short stroking time in one direction can be achieved using just one device. This item is activated by the exhaust flow of the positioner.

Product features

Exclusive manifold mounting system. It is a special STI application to connect our accessories. Fittings or nipples are not necessary as the connection is achieved using machined connection faces with sealing o-ring.

This system saves time for assembly, reduces cost on items such as fittings, reducing inventory and the shortened dimensions save space.

Suitable for:
 Standard, offshore, sandstorm and copper-free ambient conditions
 Double acting actuators.
 Low and high ambient temperature.

Technical specifications

Housing materials
 Anodised aluminium
 Stainless steel 316

Operating pressure
 P min = 2.5 bar
 P max = 7 bar
 Design pressure = 10 bar

Feeding connections
 Manifold mounting

Operating temperature*
 -20°C to 70°C
 -40°C to 70°C
 -20°C to 85°C

CV max
 Inlet = 4.5
 Outlet = 9

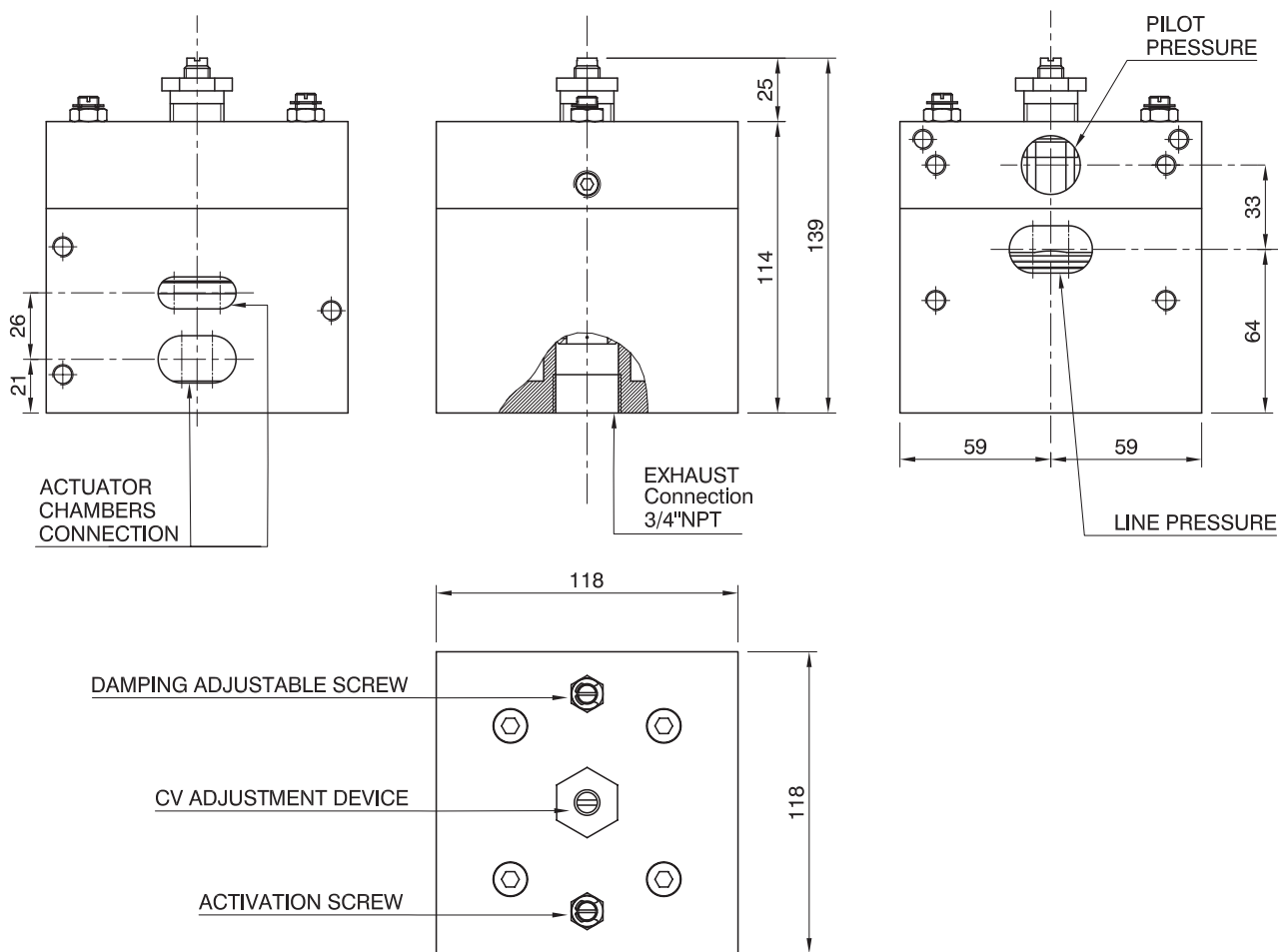
Weight
 Aluminium = 4kg
 Stainless steel 316 = 11kg

* Lower or higher temperature available on request

Pilot signal connection
 1/2" NPT

Output connections
 Manifold mounting

Dimensional drawing



Benefits

The design exhausts one chamber and simultaneously charges the other one. The number of accessories can be reduced because the standard device works only on one chamber. The derivative booster works on both at the same time.

The regulation screw cannot be ejected by internal air pressure. Regulation screw accurate and lockable. Two adjusting screws: one to adjust the activation (Switch ON positioner flow level) and the other one to adjust the deactivation (Switch OFF positioner flow level).

Unique metal piston design with high-integrity diaphragm.

Collettable exhaust. (Silencer/protection/check valve). Suitable for SL exhaust protection system

Compact dimensions compared with other high CV options available.

CV limiter devices available as an option.

The optimal selected CV ratio between exhaust and charge is 2. This ratio optimizes the increase in speed without compromising modulating stability.

The derivative booster can be piloted by positioner with CV between 0.3 to 1. For ON/OFF execution, the derivative booster can be piloted with a minimum CV 0.3.

Process Automation

The information in this brochure is provided for general informational purposes only. Specifications for products and services are subject to change without prior notice. IMI plc and its subsidiaries own all product brands mentioned herein.

IMI makes no warranties or representations about the accuracy or completeness of the content in this brochure and assumes no liability for any errors or omissions it may contain. We reserve the right to modify, enhance, or discontinue any product or service described herein without prior notification.

IMI STI

Via dei Caravaggi, 15
24040 Levate (BG) ITALY
Tel: +39 035 2928.2
Fax: +39 035 2928.247

www.imiplc.com/process-automation

07056.02/24en

