

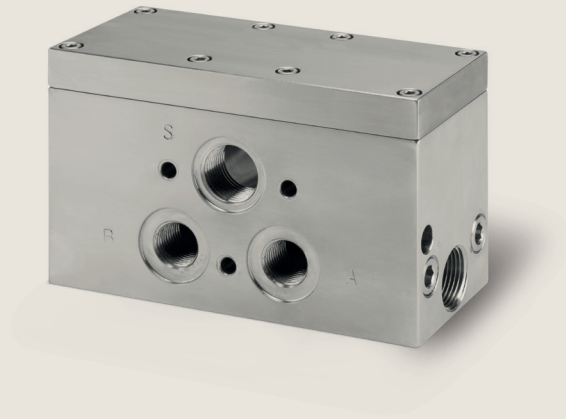
# Process Automation

IMI STI

CF

Fast Commutator





CF

## Fast Commutator

The Fast Commutator (CF) is designed to be combined with two 3-way valves providing a shared pilot conduit. This accessory is designed to operate with a pilot pressure greater than 2 bar while still maintaining a perfect seal on the seats of up to 8 bar. As the pilot fluid goes to work on moving a single membrane, switching speed is maximised.

## Product features

This exclusive manifold mounting system is a specially designed STI application for connecting our accessories. Fittings or nipples are not necessary as the connection is achieved using machined connection faces with a sealing 'o' ring. This system saves assembly time, reduces cost on other items such as fittings, inventory and the reduced dimensions save space.

Suitable for:  
Standard, offshore, sandstorm and copper-free ambient conditions  
Double acting actuators  
Low and high ambient temperature

Designed to work with FT positioner only or in conjunction with BV/BW boosters (see dedicated brochures).

Optional integrated Piezo solenoid valve for fail freeze function.

SIL certified.

Constituted by two 3-way valves having the pilot conduit in common.

Up to 3 units can be mounted on the same positioner to achieve multiple functions:  
Quick open  
Quick close  
Lock in place



Stainless steel 316 manifold mounting with Piezo valve.

## Technical specifications

Materials  
Anodized aluminum  
Stainless steel 316

Operating temperature\*  
-20°C to +70°C  
-40°C to +70°C  
-20°C to +85°C  
-25°C to +60°C with Piezo valve

CV max  
Inlet = 3  
Outlet = 3

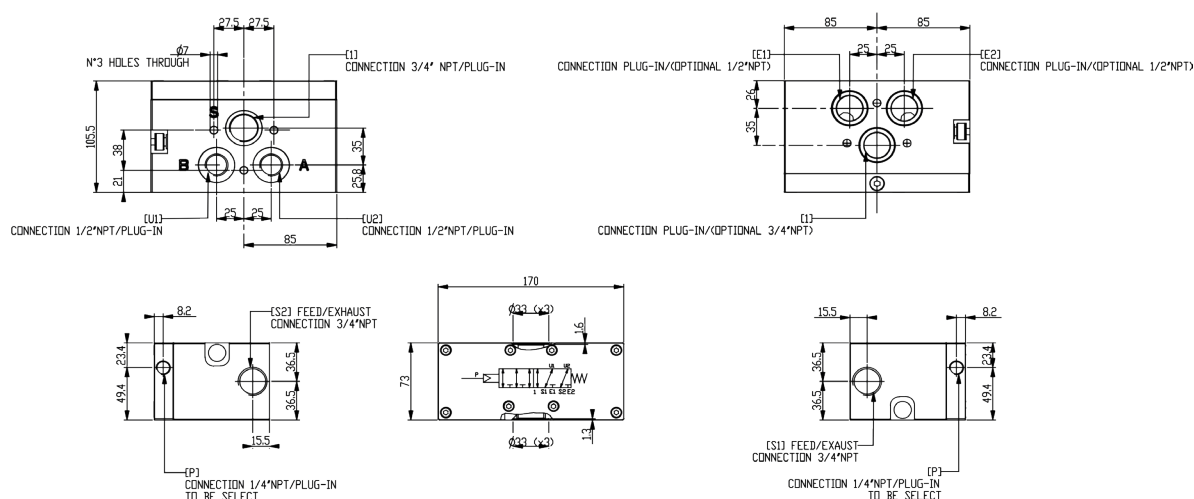
Operating pressure  
P min = 2.5 bar  
P max = 7 bar  
Design pressure = 10 bar

Port size  
Pilot signal = 1/2" NPT  
Other = 3/4" NPT or manifold mounting

Weight  
Aluminium = 3 kg  
Aluminium with Piezo = 3.5 kg  
Stainless steel 316 = 8 kg  
Stainless steel 316 with Piezo = 8.5 kg

\* Lower or higher temperatures available on request

## Dimensional drawing



## Benefits

Compact dimensions.

Without deformable diaphragm.

Can save cost over some bigger 3-way valves even if SIL rating required.

Switching will be very fast even if piloted by low CV solenoid valve.

# Process Automation

The information in this brochure is provided for general informational purposes only. Specifications for products and services are subject to change without prior notice. IMI plc and its subsidiaries own all product brands mentioned herein.

IMI makes no warranties or representations about the accuracy or completeness of the content in this brochure and assumes no liability for any errors or omissions it may contain. We reserve the right to modify, enhance, or discontinue any product or service described herein without prior notification.

## IMI STI

Via dei Caravaggi, 15  
24040 Levate (BG) ITALY  
Tel: +39 035 2928.2  
Fax: +39 035 2928.247

[www.imiplc.com/process-automation](http://www.imiplc.com/process-automation)

07067.02/24en

