

Certificate of Conformity

(1)

(2) Equipment and protective systems intended for use in potentially explosive atmospheres – **Directive 2014/34/EU**

(3) Certificate Number

EPS 22 ATEX 2 456 X

Revision 0

(4) Equipment: Control valve 840/860**, 100D**, 900D

(5) Manufacturer: IMI Critical Engineering Korea

(6) Address: 14, Dangdong, 2-ro, Munsan-eup, Paju-si, Gyeonggi-do, South Korea

(7) This equipment and any acceptable variation thereto are specified in the annex to this Certificate of Conformity and the documentation therein referred to.

(8) Bureau Veritas Consumer Products Services Germany GmbH certifies based on a voluntary assessment that this equipment has been found to comply with the Essential Health and Safety Requirements relating to the design and construction of equipment and protective systems intended for use in potentially explosive atmospheres, given in Annex II of the Directive 2014/34/EU. The examination and test results are recorded in the confidential documentation under the reference number 19TH0190.

(9) Compliance with the essential health and safety requirements has been assured by compliance with:

EN IEC 60079-0:2018

EN ISO 80079-36:2016

EN ISO 80079-37:2016

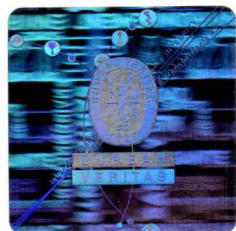
(10) If the sign "X" is placed after the certificate number, it indicates that the equipment is subject to special conditions for safe use specified in the annex to this certificate.

(11) This Certificate of Conformity relates only to the design and the construction of the specified equipment in accordance with Directive 2014/34/EU. Further requirements of this Directive apply to the manufacture of this equipment and its placing on the market. Those requirements are not covered by this certificate.

(12) The marking of the equipment shall include the following:



II 2G Ex h IIB/IIC T6...T4 Gb



Certification department of explosion protection

Tuerkheim, 2023-02-27

Ulrich Feike



Certificates without signature and seal are void. This certificate is allowed to be distributed only if not modified. Extracts or modifications must be authorized by Bureau Veritas Consumer Products Services Germany GmbH.

(13)

Annex

(14) **Certificate of Conformity EPS 22 ATEX 2 456 X**

Revision 0

(15) Description of equipment:

The control valves in combination with an adequate actuator serve for the control and regulation of different fluids. The temperature class depends on ambient temperatures, process temperatures and the used actuator.

Ambient temperature range: -20 °C to +40 °C

(16) Reference number: 19TH0190

(17) Special conditions for safe use:

For permitted ambient temperature range see instruction manual.

Gas group IIC for layer thickness < 0.2 mm and gas group IIB for layer thickness < 2mm.

Control valve shall be used with an applicable certified actuator. Conditions in the instruction manual are to be respected.

The stroke speed or operating speed shall not exceed 1m/s.

(18) Essential health and safety requirements:

Met by compliance with standards.

Certification department of explosion protection

Tuerkheim, 2023-02-27

