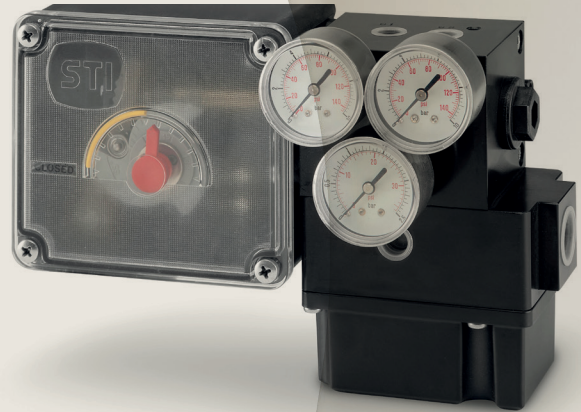


Process Automation

IMI STI

POSITIONERS



Breakthrough
engineering for
a better world

Positioners

Contents

04	CRP-3/M
06	DE/3M-3
08	DT DigitalTrak
10	SA/CL
12	SA
14	SR/CCK
16	UP



CRP-3/M



DE/3M-3



DT DigitalTrak



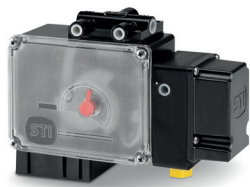
SA/CL



SA-1



SR/CCK



UP-2



CRP-3/M

Compact Positioner

IMI STI's model CRP-3/M is an analog positioner available in pneumatic and electro-pneumatic versions. The positioner has a heavy duty design making it suitable for use in very harsh conditions. It is used as the control part of the pneumatic valve set in oil and gas, refining, chemical, power, metal production and other fields with automated systems. The pneumatic version accepts a 3-15 psi (0.2-1 bar) signal and the electro-pneumatic version a 4-20 mA signal. The positioner is based on the balanced-forces principle with air distribution to the actuator chambers carried out by an internal spool.

This positioner is designed for use on linear (minimum stroke 8mm) or rotary actuators using different feedback systems (e.g. lever or motion converter). The CRP-3/M is a double acting positioner but it can be used as single acting.

The positioner is equipped with a different linear CAM (angle up to 270°) for use on actuators with different stroke lengths.

The CAM operating angles and range adjustments are printed on the positioner. Special CAM profiles are available on request.

Product features and benefits

Compact design.

Metallic case.

Heavy duty design.

High reliability.

Available with lever or with bare shaft, standard or Namur.

Split range signal.

Special characterisation/ range.

Available with a full stainless steel spool valve.

Suitable for:

Standard, sandstorm, copper free ambient condition.

Single and double acting actuators..

Low and high ambient temperature.

Technical specifications

Housing materials
Rynite
Cover polycarbonate

Operating pressure
P min = 2.5 bar
P max = 7 bar
Design pressure = 10 bar

Static air consumption
0.4 Nm³/h (0.25 SCFM) at 400kPa (60 psi)

Static air consumption (I/P converter)
+0.09 Nm³/h (0.06 SCFM)

Feeding connection
ND 1/4"

Output connection
ND 1/4"

Pilot signal connection
1/4" NPTF

Electrical connection for I/P version
ND 1/2" NPTF

Enclosure degree of protection
IP65

CV max low flow
ND 1/4" Inlet = 0.12
ND 1/4" Outlet = 0.12

Operating temperature
20°C / +70°C

-40°C / +85°C available on request

Signal
3-15 psi
4-20 mA

Sensitivity
0.15% of signal range

Linearity
1% of the stroke with linear cam

Hysteresis
0.5% of full stroke

Weights
CRP-3/M ND 1/4" = 1.4 kg
CRP-3/M-EP ND 1/4" = 1.9 kg

Optional Accessories

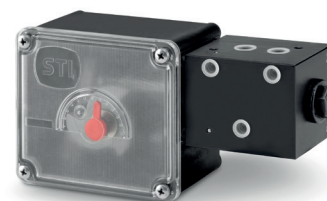
Intrinsically safe EElectro-pneumatic version available.

Customized cam.

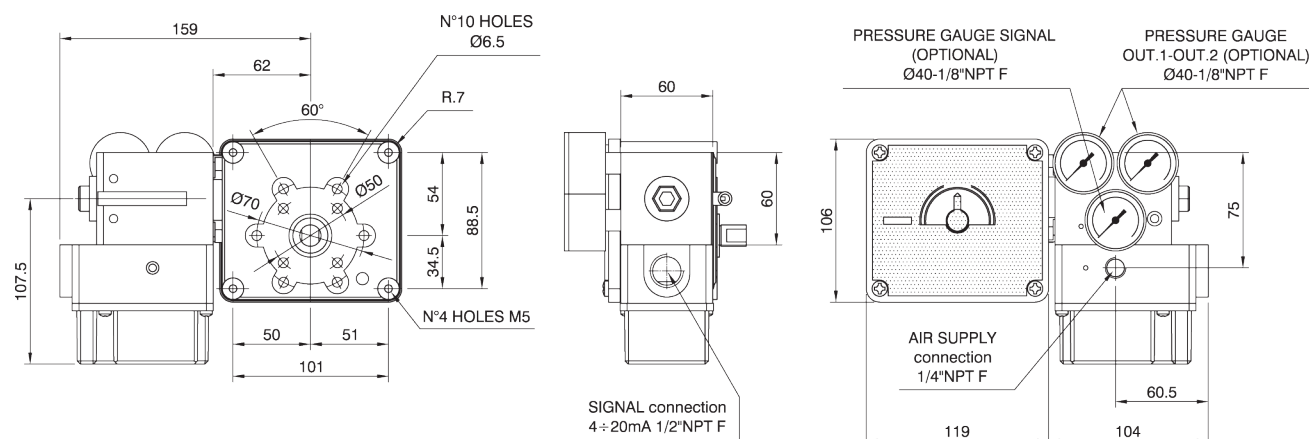
Pressure gauges.

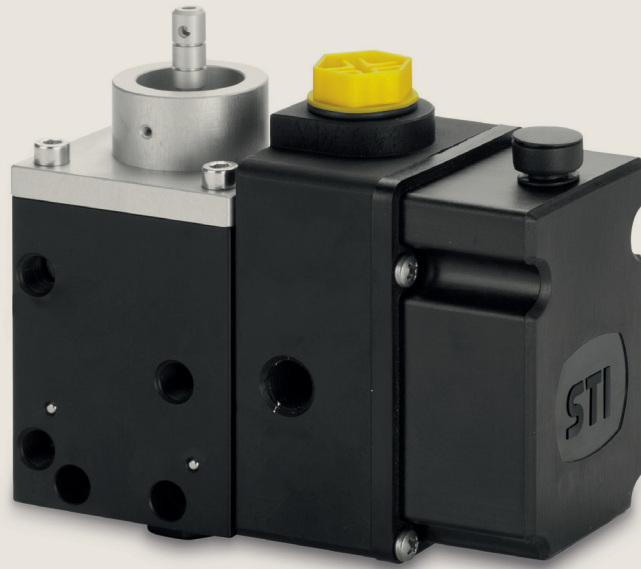
VDI/VDE 3845 EN 15714-3 connections (NAMUR).

CRP-3/M Pneumatic Version.



Dimensional drawing





DE/3M-3

Heavy Duty Positioner

The DE/3M-3 is an analog positioner available in a pneumatic and electro-pneumatic version. The positioner has a heavy duty design making it suitable for use in very harsh conditions. It is used as the control part of the pneumatic valve set in oil and gas, refining, chemical, power, metal production and other fields with automated systems. The pneumatic version accepts a 3-15 psi (0.2-1 bar) signal and the electro-pneumatic version a 4-20 mA signal.

When using the electro-pneumatic version an I/P converter is installed on the pneumatic positioner which allows an electric signal to pilot the positioner. It is based on the balanced-forces principle; air distribution to the actuator chambers is executed by an internal spool.

The DE/3M-3 is designed to be used for applications on linear actuators with a stroke length of up to 300mm. This positioner is double acting but can also be used as single acting if required.

Product features and benefits

Heavy duty design.

Split range signal.

Suitable for:

Single and double acting actuators.

High reliability.

Feedback system lever/arm free.

Standard, sandstorm, copper free ambient condition.

Low and high ambient temperature.

Technical specifications

Housing materials Anodized Aluminum	Feeding connection ND 1/4"	CV max low flow ND 1/4" Inlet = 0.12 ND 1/4" Outlet = 0.12	Sensitivity 0.2% of signal range
Operating pressure P min = 2.5 bar P max = 7 bar Design pressure = 10 bar	Output connection ND 1/4"	Operating temperature -20°C / +70°C	Linearity 1% of the full stroke
Static air consumption 0.4 Nm ³ /h (0.25 SCFM) at 400kPa (60 psi)	Pilot signal connection 1/4" NPTF	-40°C / +85°C available on request	Hysteresis 0.5% of full stroke
Static air consumption (I/P converter) +0.09 Nm ³ /h (0.06 SCFM)	Electrical connection for I/P version ND 1/2" NPTF	Signal 3-15 psi 4-20 mA	Weights DE/3M = 1.8 kg DE/3M-EP = 2.3 kg
	Enclosure degree of protection IP65		

Optional Accessories

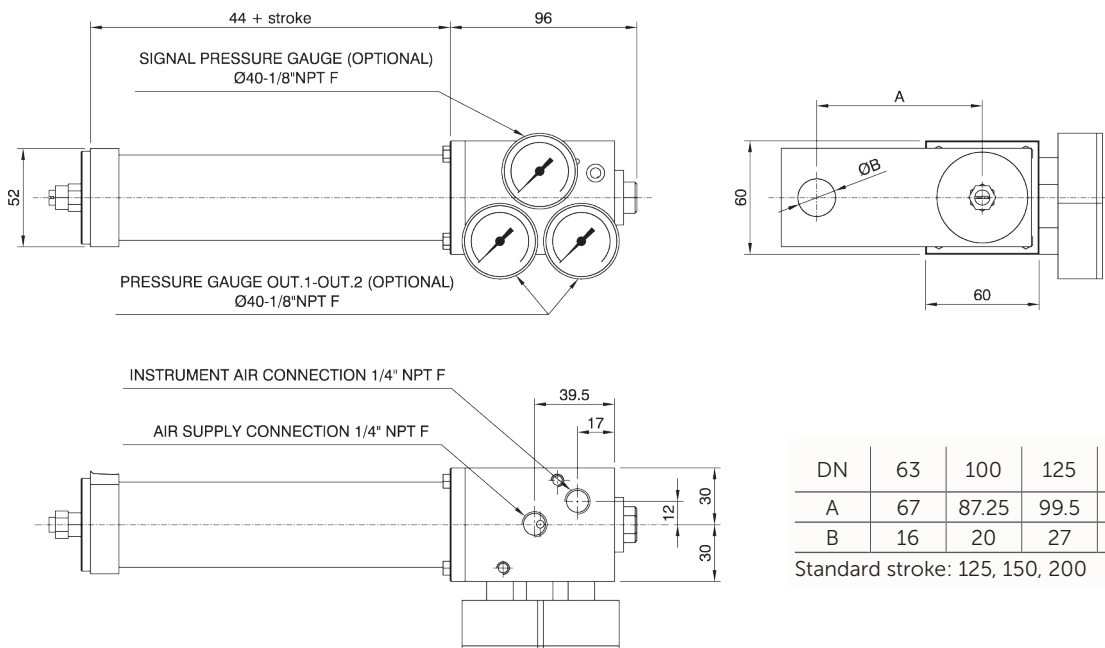
Electro-pneumatic version available - intrinsically safe and explosion proof.

Pressure gauges.

DE-3M-3
Pneumatic
Versionn.



Dimensional drawing



DN	63	100	125	160
A	67	87.25	99.5	123
B	16	20	27	28

Standard stroke: 125, 150, 200



DT

DigitalTrak Loop Powered, Compact Positioner

The DigitalTrak positioner is a loop powered instrument.

As a control part of the pneumatic valve set, this positioner is widely used in petroleum, chemical, electric generation, metal production, light industry and other fields of automation systems.

The DT intelligent electro-pneumatic valve positioner accepts 4-20 mA valve setting signal from the control system; at the same time, it receives the actual valve signal through the local sensors; the two signals are compared by control software in order to control the feeding and exhaust of the air to the actuator, driving the valve to reach the set point.

The DigitalTrak positioner is based on microprocessor technology. It can overcome friction and the imbalance power on the control valve well, and improve the response speed of the control valve. This sets the position rapidly and accurately.

Product features and benefits

Compact design.
Metallic case.
Heavy duty design.

High reliability.
Integrated fail in place on loss of signal device.
Integrated position transmitter.

Display for calibration.
Autotuning system for calibration.
Auto-diagnosis system.

Suitable for:
Standard, sandstorm, copper free ambient conditions.
Single and double acting actuators.
Low and high ambient temperature.

Technical specifications

Housing material Aluminum	Output connection ND 1/4"	Signal 4-20 mA	Hysteresis 0.5% of full stroke
Operating pressure P min = 1.4 bar P max = 7 bar Design pressure = 10 bar	Pilot signal connection 1/2" NPTF	Sensitivity 0.1% of signal range	Environmental humidity 5% - 95%RH
Static air consumption 0.036 Nm ³ /h (0.02 SCFM) at 400kPa (60 psi)	CV max ND 1/4" Inlet = 0.12 ND 1/4" Outlet = 0.12	Repeatability 0.2% of the full stroke	Input independence 375 Ω/20 mA
Feeding connection ND 1/4"	Operating temperature -20°C / +70°C	Accuracy 0.5% of the full stroke	Weight ND 1/4" = 2kg

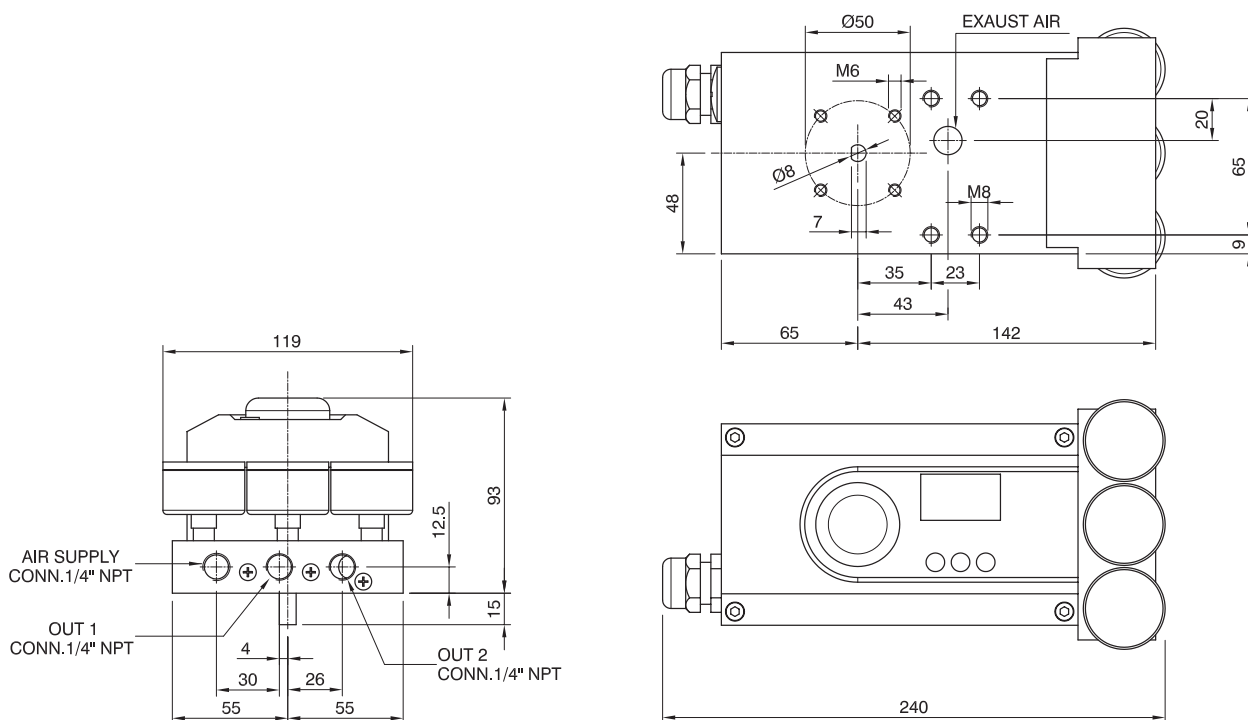
Optional Accessories

Remote mounting equipment.

DT Electro-pneumatic version.



Dimensional drawing





SA/CL

Analog Positioner

The SA/CL is an analog positioner available in a pneumatic and electro-pneumatic version. The positioner has a heavy duty design making it suitable for use in very harsh conditions. It is used as the control part of the pneumatic valve set in oil and gas, refining, chemical, power, metal production and other fields with automated systems. The UP-2 pneumatic version accepts a 3-15 psi (0.2-1 bar) signal and the electro-pneumatic version a 4-20 mA signal.

When using the electro-pneumatic version an I/P converter is installed on the pneumatic positioner which allows an electric signal to pilot the positioner. It is based on the balanced-forces principle; air distribution to actuator chambers is executed by an internal spool.

The SA/CL is designed to be used for applications on linear actuators with a stroke length of up to 70mm. This positioner is double acting but can also be used as single acting if required.

Product features and benefits

Metallic case.	Air purge version.
Heavy duty design.	Sandstorm execution.
High reliability.	Split range signal.
Intuitive mechanical and pneumatic construction.	Special characterisation/range.
Integrated bypass only for ND 1/4" version.	Suitable for big size/fast stroking actuator.
Action inversion without tubing inversion only for ND 1/4" version.	Available full stainless steel spool valve for ND 1/4".
	Full stainless steel spool valve for ND 1/2".

Suitable for:

- Standard, sandstorm, copper free ambient condition.
- Single and double acting actuators.
- Low and high ambient temperature.



DT Electro-pneumatic version

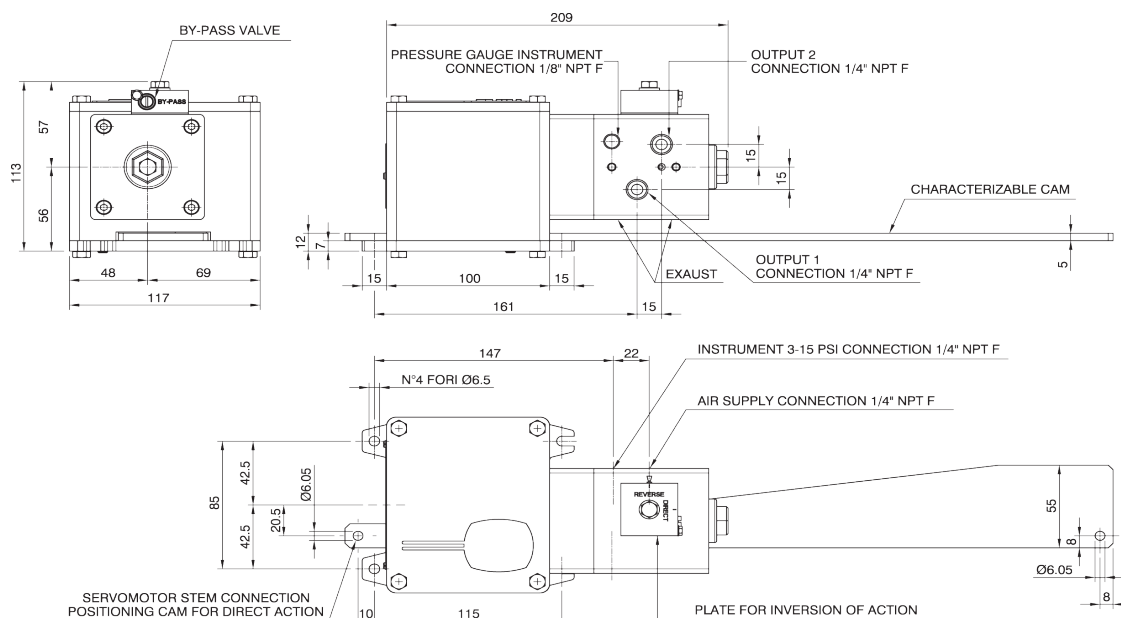
Technical specifications

Housing materials Aluminum	Feeding connection ND 1/4" Model SA/CL-2	Exclusion degree of protection IP65	Sensitivity 0.2% of signal range
Operating pressure P min = 2.5 bar P max = 7 bar Design pressure = 10 bar	ND 1/2" Model SA/CL-1	CV max ND 1/4" Inlet = 0.34 ND 1/4" Outlet = 0.34 ND 1/2" Inlet = 0.637 ND 1/2" Outlet = 0.79	Linearity 1% of the full stroke
Static air consumption ND 1/4" 1.02 Nm ³ /h (0.6 SCFM) at 400 kPa (60 psi) ND 1/2" 1.04 Nm ³ /h (0.8 SCFM) at 400 kPa (60 psi)	Output connection ND 1/4" Model SA/CL-2 ND 1/2" Model SA/CL-1	Operating temperature -20°C / +70°C -40°C / +85°C available on request	Hysteresis 0.5% of the full stroke
Static air consumption (I/P converter) +0.09 Nm ³ /h (0.06 SCFM)	Pilot signal connection 1/4" NPTF	Signal 3-15 psi 4-20 mA	Weight SA/CL-2 ND 1/4" = 2.3 kg SA/CL-1 ND 1/2" = 3 kg SA/CL-2-EP ND 1/4" = 2.8 kg SA/CL-1-EP ND 1/2" = 3.5 kg
	Electrical connection (I/P converter) ND 1/2" NPTF		

Optional Accessories

Air-Lock ND 1/4" integrated.	Change-over plate with by-pass valve.	Customized cam.
Electro-pneumatic version available - intrinsically safe and explosion proof.	Special construction for corrosive environment.	Pressure gauges.

Dimensional drawing





SA

Analog Positioner

The SA-1 is an analogic positioner available in a pneumatic and electro-pneumatic version. The positioner has a heavy duty design making it suitable for use in very harsh conditions. It is used as the control part of the pneumatic valve set in oil and gas, refining, chemical, power, metal production and other fields with automated systems. The pneumatic version accepts a 3-15 psi (0.2-1 bar) signal and the electro-pneumatic version a 4-20 mA signal.

When using the electro-pneumatic version an I/P converter is installed on the pneumatic positioner which allows an electric signal to pilot the positioner. It is based on the balanced-forces principle; air distribution to actuator chambers is done by a spool.

It can be fitted on single or double acting actuators and the operational stroke is between 3-100mm for reverse action with the spring extended.

The standard operational stroke length is 2-65mm for both direct and reverse action with a compressed cylinder spring with a maximum diameter of 200mm. The positioner works on a force balance type operating principle with linear characteristics. The feed-back element consists of a spring with a linear characteristic, actuated by the piston movement: no external elements for movement intake are required. The SA-1 positioner is very compact and can be fully installed on the servo-control system (It is especially suited for pump use).

This positioner is a double acting positioner but it can be used as a single acting one.

Product features and benefits

Compact design.
Metallic case.
Heavy duty design.

High reliability.
Intuitive mechanical and
pneumatic construction.
Split range signal.

Special characterisation/
range.
Available full stainless steel
spool valve.
No external feedback system.

Suitable for:
Standard, sandstorm, copper free
ambient conditions.
Single and double acting actuators.
Low and high ambient
temperature.

Technical specifications

Housing materials
Aluminum

Operating pressure
P min = 2.5 bar
P max = 7 bar
Design pressure = 10 bar

Static air consumption
1.02 Nm³/h (0.6 SCFM) at 400 kPa
(60 psi)

Feeding connection
ND 1/4"

Output connection
ND 1/4"

Pilot signal connection
1/4" NPTF

Electrical connection (I/P
converter)
ND 1/2" NPTF

Exclosure degree of protection
IP65

CV max
ND 1/4" Inlet = 0.34
ND 1/4" Outlet = 0.34

Operating temperature
-20°C / +70°C
-40°C / +85°C available on request

Signal
3-15 psi
4-20 mA

Sensitivity
0.2% of signal range

Linearity
1% of the stroke (direct action)

Hysteresis
0.5% of the full stroke

Weight
SA-1ND 1/4" = 1.9 kg
SA-1-EP ND 1/4" = 2.5 kg

Optional Accessories

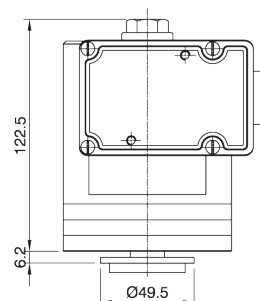
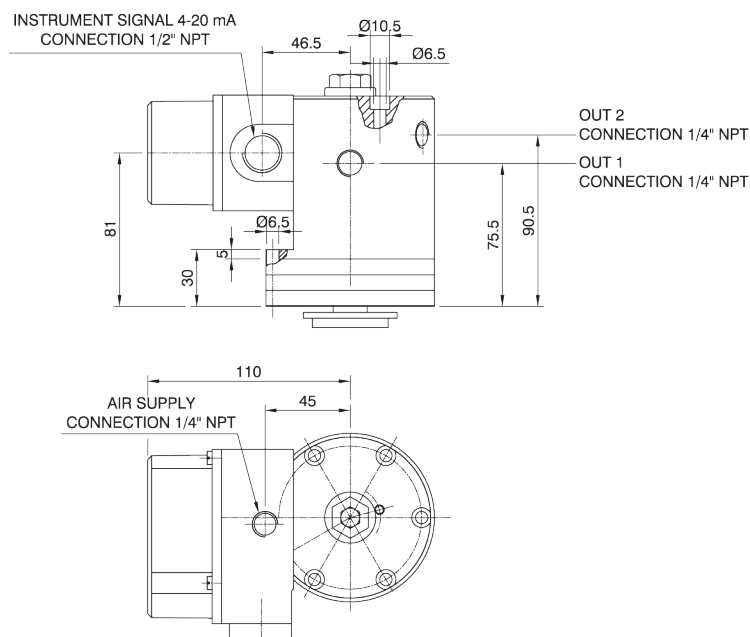
Electro-pneumatic version
intrinsically safe and explosion
proof.

Pressure gauges.

SA-1 pneumatic
version.



Dimensional drawing





SR/CCK

Specialised Quarter Turn Positioner

The SR/CCK is specifically designed for the proportional quarter-turn operation for the actuation of butterfly, plug, ball valves, etc. It can be also used on linear actuators using a specific bracket. It is usually located in the control circuit between the air filter regulator and the actuator of the final control element. This positioner has a heavy duty design to make it suitable for use as part of the pneumatic valve set in the potentially harsh conditions found in petroleum, chemical, power, metal production and other hazardous fields.

This is a double acting positioner which can also be used as single acting. The SR/CCK positioner is equipped with a different linear cam (angle up to 270°) to allow use on actuators with different strokes.

Cam operating angles and range adjustments are printed on the positioner. Special cam profiles are available on request. This positioner is based on the balanced-forces principle and air distribution to the actuator chamber is executed by a spool.

Product features and benefits

Metallic case.
 Heavy duty design.
 High reliability.

Intuitive mechanical and pneumatic construction.
 Split range signal.
 Special characterisation/ range.

Available with full stainless steel spool valve.
 Visual position indicator.

Suitable for:
 Standard, sandstorm, copper free ambient conditions
 Single and double acting actuators
 Low and high ambient temperature.

Technical specifications

Housing materials
 Aluminum painted Jet Black RAL 9005
 Cover polycarbonate

Operating pressure
 P min = 2.5 bar
 P max = 7 bar
 Design pressure = 10 bar

Static air consumption
 1.02 Nm³/h (0.6 SCFM) at 400 kPa (60 psi)

Feeding connection
 ND 1/4"

Output connection
 ND 1/8"

Pilot signal connection
 1/8" NPTF

CV max
 ND 1/4" Inlet = 0.34
 ND 1/4" Outlet = 0.34

Operating temperature
 -20°C / +70°C

Signal
 3-15 psi

Sensitivity
 0.25% of full range

Linearity
 1% of the full range with linear cam

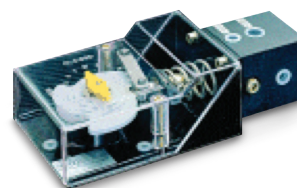
Hysteresis
 0.5% of the full stroke

Weight
 ND 1/4" = 0.9 kg

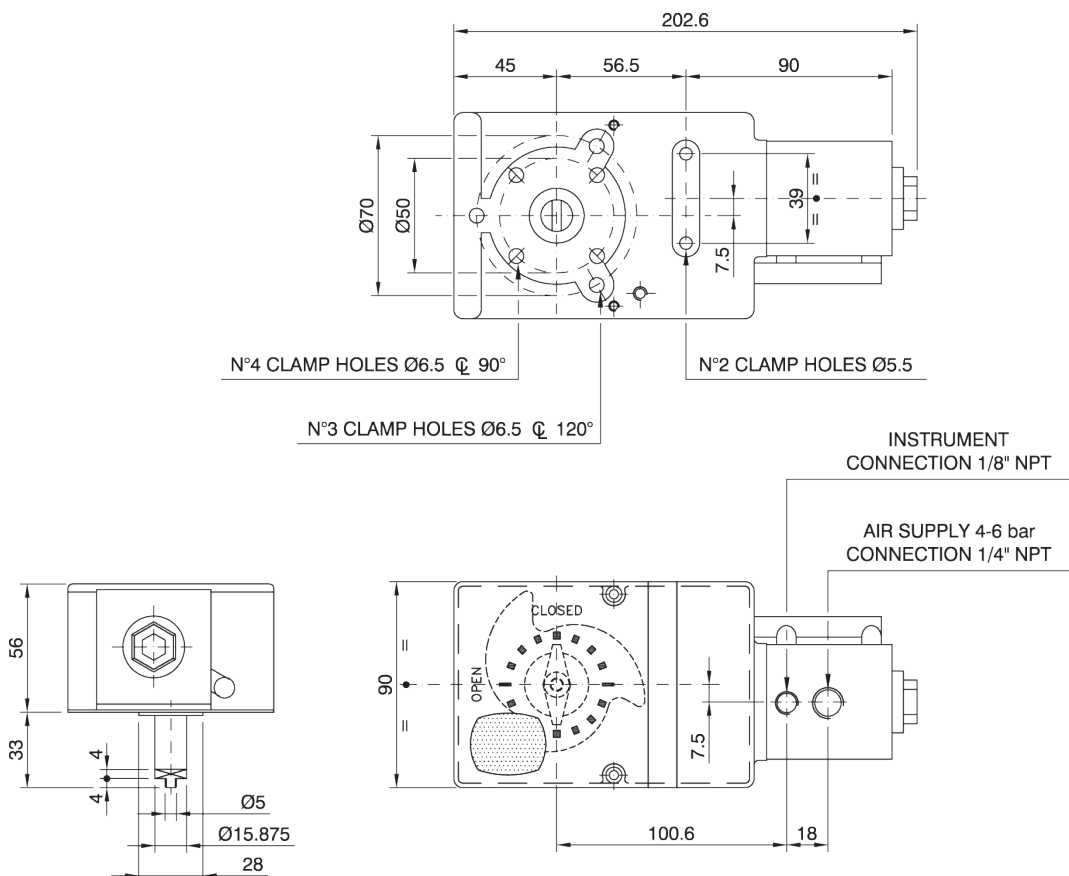
Optional Accessories

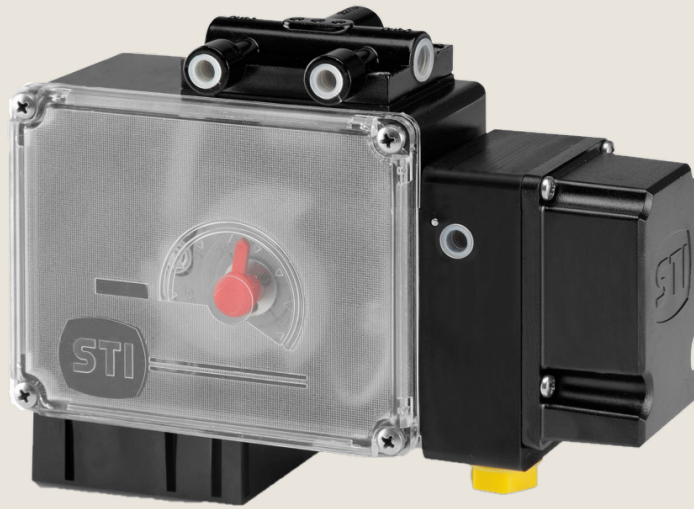
Pressure gauges.

SR/CCK pneumatic version.



Dimensional drawing





UP

Analog Positioner

IMI STI's model UP-2 is an analog positioner available in pneumatic and electro-pneumatic versions. The positioner has a heavy duty design making it suitable for use in very harsh conditions. It is used as the control part of the pneumatic valve set in oil and gas, refining, chemical, power, metal production and other fields with automated systems. The UP-2 pneumatic version accepts a 3-15 psi (0.2-1 bar) signal and the electro-pneumatic version a 4-20 mA signal. The positioner is based on the balanced-forces principle with air distribution to the actuator chambers carried out by an internal spool.

UP-2 is designed to be used on linear actuators (with a minimum stroke of 8 mm) or on rotary actuators which use different feedback systems such as the lever or motion converter MC model.

The positioner is a double acting positioner but it can also be used as single acting. It is equipped with a different linear cam (angle up to 270°) to allow use on actuators with different strokes. The cam operating angles and range adjustments are printed on the positioner. Special cam profiles are available on request.

The UP-2 NC 1/4" is available with a bypass valve between the actuator chamber connections. This is built into the change-over system so the actuator action can be changed without having to rebuild the piping.

The positioner is available in different models: the UP2/L (for lever applications), the UP-2/R (for rotary applications). There are different sizes (ND 1/4" or ND 1/2") and the positioner can come with or without an integrated air-lock device (the AL model), with a lever or bare shaft, standard or Namur.

Product features and benefits

Metallic case.

Heavy duty design.

High reliability.

Integrated bypass only for ND 1/4" version.

Action inversion without tubing inversion only for ND 1/4" version.

Split range signal.

Special characterisation/range.

Suitable for large size/fast stroking actuator.

Available with a full stainless steel spool valve for ND 1/4".

Full stainless steel spool valve for ND 1/2".

Visual position indicator.

Suitable for:

Standard, sandstorm, copper free ambient conditions.

Single and double acting actuators.

Low and high ambient temperature.

Technical specifications

Housing materials

Aluminum painted Jet Black RAL 9005

Cover polycarbonate

Operating pressure

P min = 2.5 bar

P max = 7 bar

Design pressure = 10 bar

Static air consumption

NPTF 1/4" 1.02 Nm³/h (0.6 SCFM) at 400 kPa (60 psi)

NPTF 1/2" 1.3 Nm³/h (0.8 SCFM) at 400 kPa (60 psi)

Static air consumption (I/P converter)

+0.09 Nm³/h (0.06 SCFM)

Feeding connection

ND 1/4"

ND 1/2"

Output connection

ND 1/4"

ND 1/2"

Pilot signal connection

1/8" NPTF

Electrical connection (I/P converter)

ND 1/2" NPTF

Enclosure degree of protection

IP65

CV max

ND 1/4" Inlet = 0.34

ND 1/4" Outlet = 0.34

ND 1/2" Inlet = 0.637

ND 1/2" Outlet = 0.79

Operating temperature

-20°C / +70°C

-40°C / +85°C available on request

Signal

3-15 psi

4-20 mA

Sensitivity

0.15% of full range

Linearity

1% of the full range with linear cam

Hysteresis

0.5% of the full stroke

Weight

UP-2 ND 1/4" = 3.9 kg

UP-2 ND 1/2" = 4 kg

UP-2-EP ND 1/4" = 4.4 kg

UP-2-EP ND 1/2" = 4.5 kg

Optional Accessories

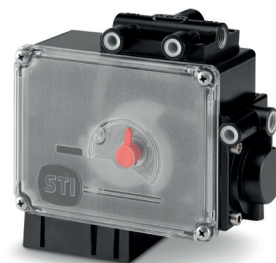
Air-lock ND 1/4" or ND 1/2" integrated.

Electro-pneumatic version available - intrinsically safe and explosion proof with ATEX execution.

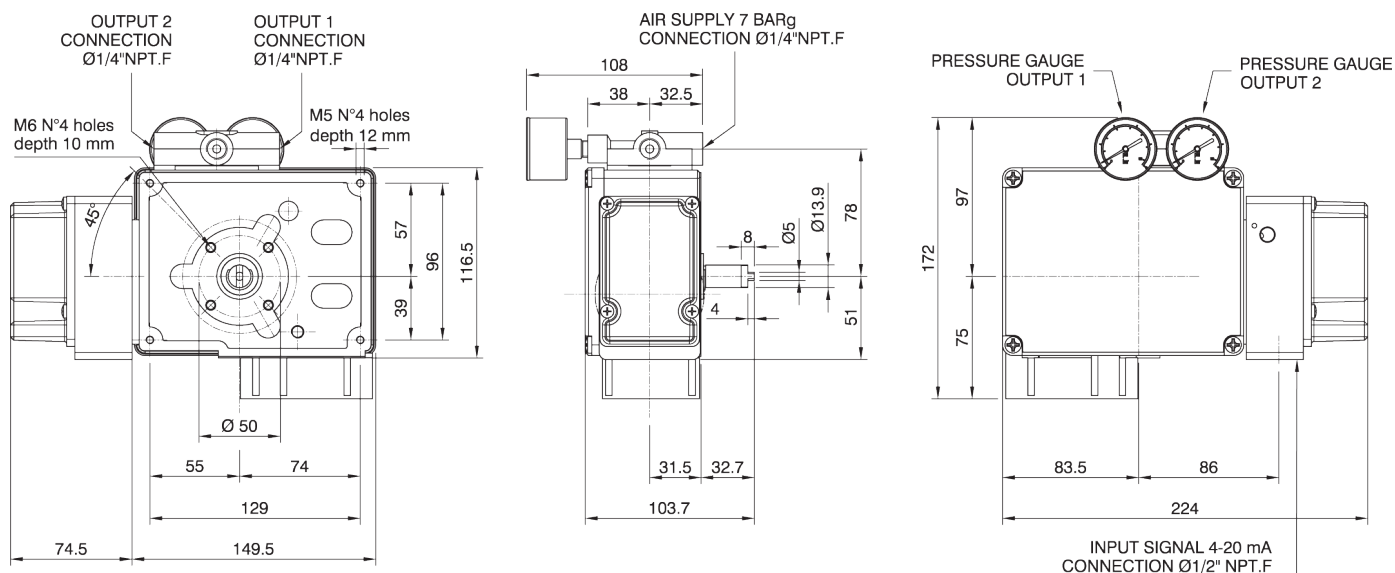
Change-over system with by-pass valve only for ND 1/4" size pneumatic.

1/2" NPTF connections for quick operating times of large actuators pressure gauges.

VDI/VDE 3845 EN 15714-3 connections (NAMUR).



Dimensional drawing



Process Automation

The information in this brochure is provided for general informational purposes only. Specifications for products and services are subject to change without prior notice. IMI plc and its subsidiaries own all product brands mentioned herein.

IMI makes no warranties or representations about the accuracy or completeness of the content in this brochure and assumes no liability for any errors or omissions it may contain. We reserve the right to modify, enhance, or discontinue any product or service described herein without prior notification.

IMI STI

Via dei Caravaggi, 15
24040 Levate (BG) ITALY
Tel: +39 035 2928.2
Fax: +39 035 2928.247

www.imiplc.com/process-automation

07077.02/24en

