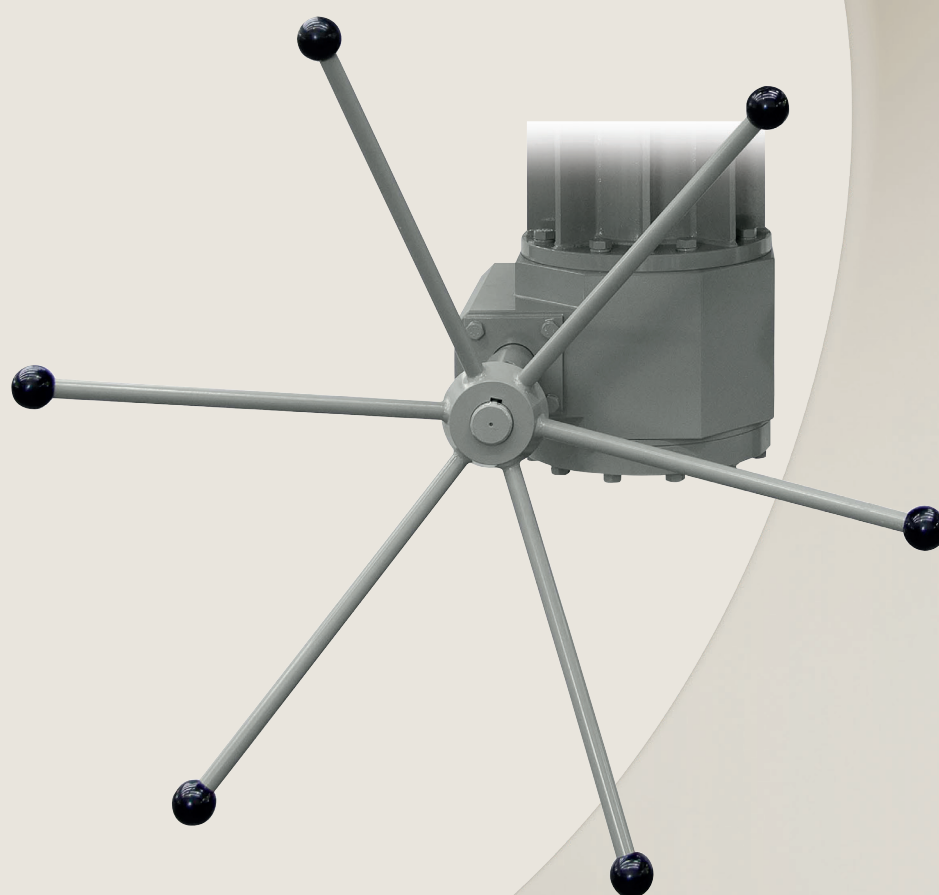


Process Automation

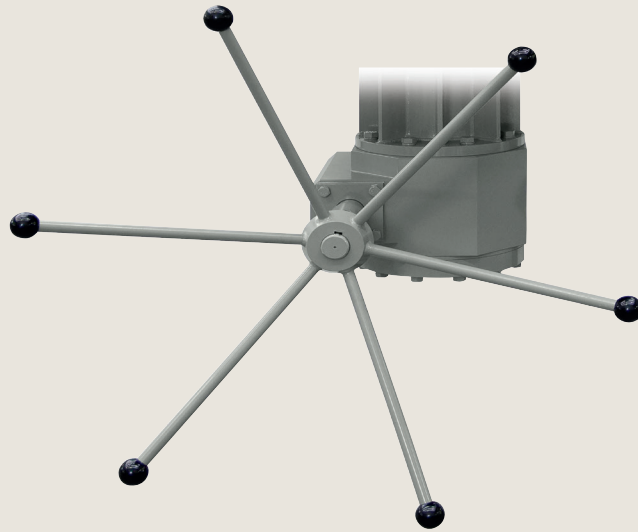
IMI STI

GR

Manual Override



Breakthrough
engineering for
a better world



GR

Manual Override

The Manual Override (model GR) is designed to manually move the actuator stem using a handwheel. The internal gear is mounted on ball bearings for high efficiency and for long operating life. All STI actuators may be equipped with a manual override to allow operation of the control element when instrument air is not available and the actuator has to be operated manually. Several sizes are available according to the actuator required. For STI actuators series SCV the gear box is mounted between the actuator and the yoke, for the SC series it is mounted on the actuator stem cap side. The manual override can be used as an adjustable retraction stroke limiter. A specific version can be direct mounted to operate a valve where no actuator is installed.

Product features

Suitable for standard, offshore, sandstorm and copper-free ambient conditions.

Single and double acting actuators.

Low and high ambient temperature.

Technical specifications

Housing materials
GR 1 = Painted aluminium
GR 2 = Painted aluminium
GR 2.5 = Painted cast iron
GR 3 = Painted carbon steel

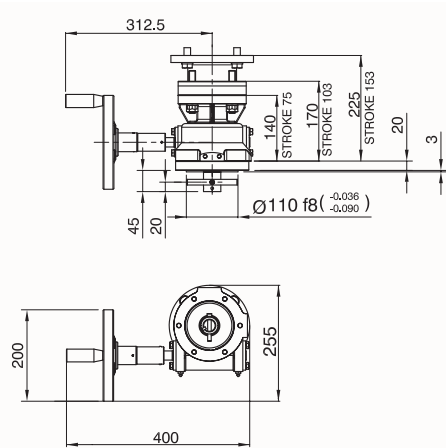
Operating temperature*
-20°C to 70°C
-40°C to 70°C
-20°C to 85°C

* Lower or higher temperature available on request.

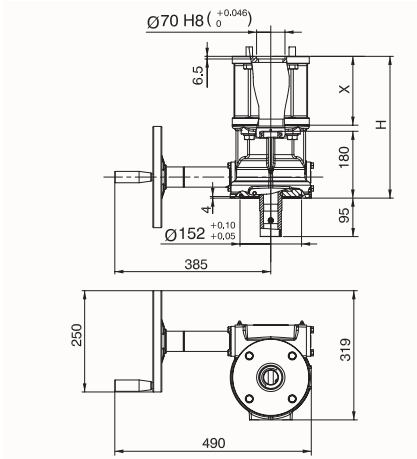


Optional adjustable thrust limiter.

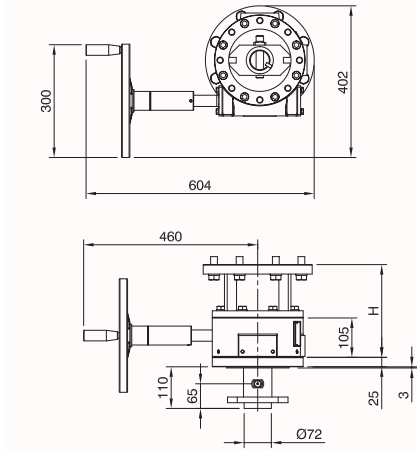
Dimensional drawing



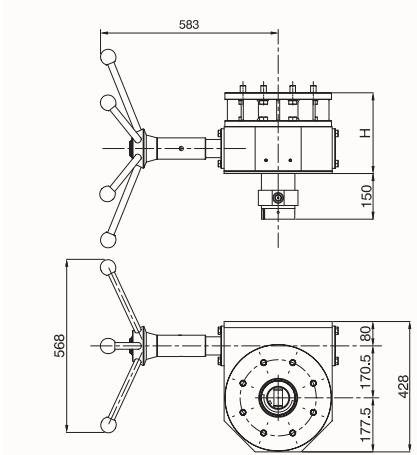
GR 1	Stroke	Weight (kg)	H (mm)	X (mm)
GR_153	153.0	22	225	-
GR_103	103.0	17	170	-
GR_75	75.0	14	140	-



GR 2	Stroke	Weight (kg)	H (mm)	X (mm)
GR_605	605	57	690	520
GR_555	555	55	640	470
GR_505	505	53	590	420
GR_455	455	51	540	370
GR_405	405	49	490	320
GR_355	355	47	440	270
GR_305	305	45	390	220
GR_255	255	43	340	170
GR_205	205	40	300	-
GR_153	153	38	247	-
GR_103	103	32	180	-



GR 2.5	Stroke	Weight (kg)	H (mm)	X (mm)
GR_103	103	71	245	-
GR_153	153	75	295	-
GR_205	205	78	347	-
GR_255	255	82	397	-
GR_305	305	85	447	-
GR_355	355	88	497	-
GR_405	405	91	547	-
GR_455	455	94	597	-
GR_505	505	97	647	-
GR_555	555	100	697	-
GR_605	605	103	747	-
GR_655	655	106	797	-



GR 3	Stroke	Weight (kg)	H (mm)	X (mm)
GR_505	505	240	667	-
GR_455	455	226	617	-
GR_405	405	230	567	-
GR_355	355	225	517	-
GR_305	305	220	467	-
GR_255	255	215	417	-
GR_205	205	209	367	-
GR_153	153	204	315	-
GR_103	103	199	265	-

Benefits

Internal gear mounted on ball bearings to minimize operator effort and long operation life.

Available with sandstorm design with stem and main screw bellows.

Available to lock movement in any position to keep valve in any required position.

Available with adjustable thrust limiter.

Available with mechanical chain transmission of the manual override for remote operator access.

Process Automation

The information in this brochure is provided for general informational purposes only. Specifications for products and services are subject to change without prior notice. IMI plc and its subsidiaries own all product brands mentioned herein.

IMI makes no warranties or representations about the accuracy or completeness of the content in this brochure and assumes no liability for any errors or omissions it may contain. We reserve the right to modify, enhance, or discontinue any product or service described herein without prior notification.

IMI STI

Via dei Caravaggi, 15
24040 Levate (BG) ITALY
Tel: +39 035 2928.2
Fax: +39 035 2928.247

www.imiplc.com/process-automation

07053.02/24en

