

Process Automation

IMI STI

SA/CL

Analog Positioner





SA/CL

Analog Positioner

The SA/CL is an analog positioner available in a pneumatic and electro-pneumatic version. The positioner has a heavy duty design making it suitable for use in very harsh conditions. It is used as the control part of the pneumatic valve set in oil and gas, refining, chemical, power, metal production and other fields with automated systems. The UP-2 pneumatic version accepts a 3-15 psi (0.2-1 bar) signal and the electro-pneumatic version a 4-20 mA signal.

When using the electro-pneumatic version an I/P converter is installed on the pneumatic positioner which allows an electric signal to pilot the positioner. It is based on the balanced-forces principle; air distribution to actuator chambers is executed by an internal spool.

The SA/CL is designed to be used for applications on linear actuators with a stroke length of up to 70mm. This positioner is double acting but can also be used as single acting if required.

Product features and benefits

Metallic case.	Air purge version.
Heavy duty design.	Sandstorm execution.
High reliability.	Split range signal.
Intuitive mechanical and pneumatic construction.	Special characterisation/range.
Integrated bypass only for ND 1/4" version.	Suitable for big size/fast stroking actuator.
Action inversion without tubing inversion only for ND 1/4" version.	Available full stainless steel spool valve for ND 1/4".
	Full stainless steel spool valve for ND 1/2".

Suitable for:

- Standard, sandstorm, copper free ambient condition.
- Single and double acting actuators.
- Low and high ambient temperature.



DT Electro-pneumatic version

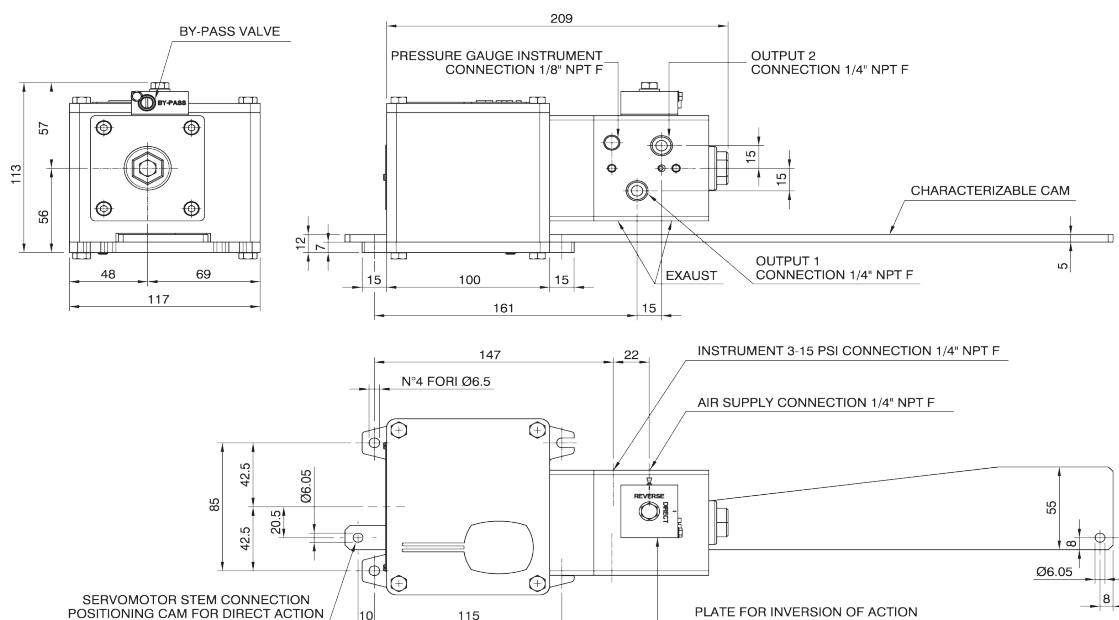
Technical specifications

Housing materials Aluminum	Feeding connection ND 1/4" Model SA/CL-2	Exclosure degree of protection IP65	Sensitivity 0.2% of signal range
Operating pressure P min = 2.5 bar P max = 7 bar Design pressure = 10 bar	ND 1/2" Model SA/CL-1	CV max ND 1/4" Inlet = 0.34 ND 1/4" Outlet = 0.34 ND 1/2" Inlet = 0.637 ND 1/2" Outlet = 0.79	Linearity 1% of the full stroke
Static air consumption ND 1/4" 1.02 Nm ³ /h (0.6 SCFM) at 400 kPa (60 psi) ND 1/2" 1.04 Nm ³ /h (0.8 SCFM) at 400 kPa (60 psi)	Output connection ND 1/4" Model SA/CL-2 ND 1/2" Model SA/CL-1	Operating temperature -20°C / +70°C -40°C / +85°C available on request	Hysteresis 0.5% of the full stroke
Static air consumption (I/P converter) +0.09 Nm ³ /h (0.06 SCFM)	Pilot signal connection 1/4" NPTF	Signal 3-15 psi 4-20 mA	Weight SA/CL-2 ND 1/4" = 2.3 kg SA/CL-1 ND 1/2" = 3 kg SA/CL-2-EP ND 1/4" = 2.8 kg SA/CL-1-EP ND 1/2" = 3.5 kg

Optional Accessories

Air-Lock ND 1/4" integrated.	Change-over plate with by-pass valve.	Customized cam.
Electro-pneumatic version available - intrinsically safe and explosion proof.	Special construction for corrosive environment.	Pressure gauges.

Dimensional drawing



Process Automation

The information in this brochure is provided for general informational purposes only. Specifications for products and services are subject to change without prior notice. IMI plc and its subsidiaries own all product brands mentioned herein.

IMI makes no warranties or representations about the accuracy or completeness of the content in this brochure and assumes no liability for any errors or omissions it may contain. We reserve the right to modify, enhance, or discontinue any product or service described herein without prior notification.

IMI STI

Via dei Caravaggi, 15
24040 Levate (BG) ITALY
Tel: +39 035 2928.2
Fax: +39 035 2928.247

www.imiplc.com/process-automation

07073.02/24en

