

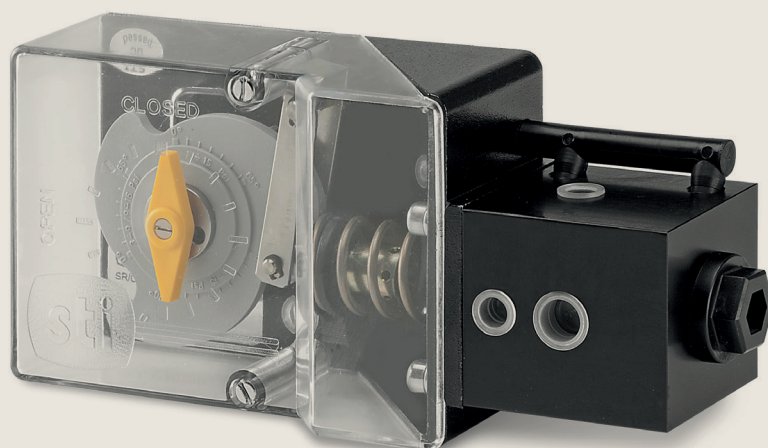
# Process Automation

IMI STI

SR/CCK

Specialised Quarter Turn Positioner





## SR/CCK

# Specialised Quarter Turn Positioner

The SR/CCK is specifically designed for the proportional quarter-turn operation for the actuation of butterfly, plug, ball valves, etc. It can be also used on linear actuators using a specific bracket. It is usually located in the control circuit between the air filter regulator and the actuator of the final control element. This positioner has a heavy duty design to make it suitable for use as part of the pneumatic valve set in the potentially harsh conditions found in petroleum, chemical, power, metal production and other hazardous fields.

This is a double acting positioner which can also be used as single acting. The SR/CCK positioner is equipped with a different linear cam (angle up to 270°) to allow use on actuators with different strokes.

Cam operating angles and range adjustments are printed on the positioner. Special cam profiles are available on request. This positioner is based on the balanced-forces principle and air distribution to the actuator chamber is executed by a spool.

Product features and benefits

|                    |  |  |   |
|--------------------|--|--|---|
| Metallic case.     | Intuitive mechanical and pneumatic construction. | Available with full stainless steel spool valve. | Suitable for:                                       |
| Heavy duty design. | Split range signal.                              | Visual position indicator.                       | Standard, sandstorm, copper free ambient conditions |
| High reliability.  | Special characterisation/ range.                 |  | Single and double acting actuators                  |
|                    |  |  | Low and high ambient temperature.                   |

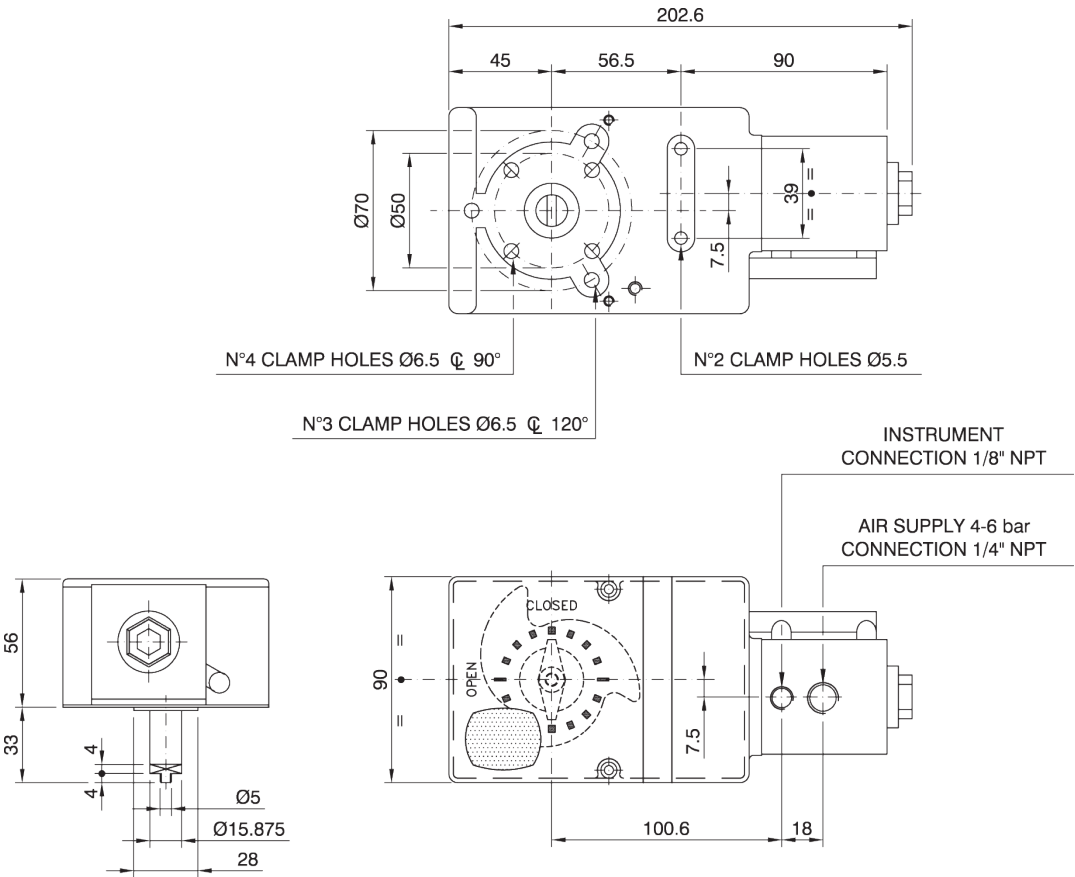
Technical specifications

|  |  |   |   |
|--|--|---|---|
| Housing materials<br>Aluminum painted Jet Black RAL 9005<br>Cover polycarbonate    | Static air consumption<br>1.02 Nm <sup>3</sup> /h (0.6 SCFM) at 400 kPa (60 psi) | CV max<br>ND 1/4" Inlet = 0.34<br>ND 1/4" Outlet = 0.34 | Sensitivity<br>0.25% of full range                |
| Operating pressure<br>P min = 2.5 bar<br>P max = 7 bar<br>Design pressure = 10 bar | Feeding connection<br>ND 1/4"  | Operating temperature<br>-20°C / +70°C                  | Linearity<br>1% of the full range with linear cam |
|  | Output connection<br>ND 1/8"   | Signal<br>3-15 psi                                      | Hysteresis<br>0.5% of the full stroke             |
|  | Pilot signal connection<br>1/8" NPTF   |   | Weight<br>ND 1/4" = 0.9 kg                        |

Optional Accessories

|                  |                           |   |
|------------------|---------------------------|---|
| Pressure gauges. | SR/CCK pneumatic version. |  |
|------------------|---------------------------|---|

Dimensional drawing



# Process Automation

The information in this brochure is provided for general informational purposes only. Specifications for products and services are subject to change without prior notice. IMI plc and its subsidiaries own all product brands mentioned herein.

IMI makes no warranties or representations about the accuracy or completeness of the content in this brochure and assumes no liability for any errors or omissions it may contain. We reserve the right to modify, enhance, or discontinue any product or service described herein without prior notification.

## IMI STI

Via dei Caravaggi, 15  
24040 Levate (BG) ITALY  
Tel: +39 035 2928.2  
Fax: +39 035 2928.247

[www.imiplc.com/process-automation](http://www.imiplc.com/process-automation)

07075.02/24en

