

Process Automation

IMI STI

SAR

Snap Acting Relay



Breakthrough
engineering for
a better world



SAR

Snap Acting Relay

The Snap Acting Relay (model SAR) is a narrow-band pneumatic controller with an adjustable setpoint. Pressure in the input chamber opposes the load on the adjusting spring. Whenever this input pressure exceeds the spring setting, the input signal seat will be closed and the open supply seat will allow full supply pressure to pass directly to the output. Conversely, whenever the input pressure is below the spring setting, the supply seat will be closed and the signal seat will be open. The output, in this case, will be equal to the signal. Generally used for the input signal of pneumatic controlled positioners.

Product features

Suitable for standard, offshore, sandstorm and copper-free ambient conditions.

Single and double acting actuators.

Low and high ambient temperatures.

Technical specifications

Housing materials
Anodised aluminium

Pilot signal connection
1/8" NPT

Output connections
1/4" NPT

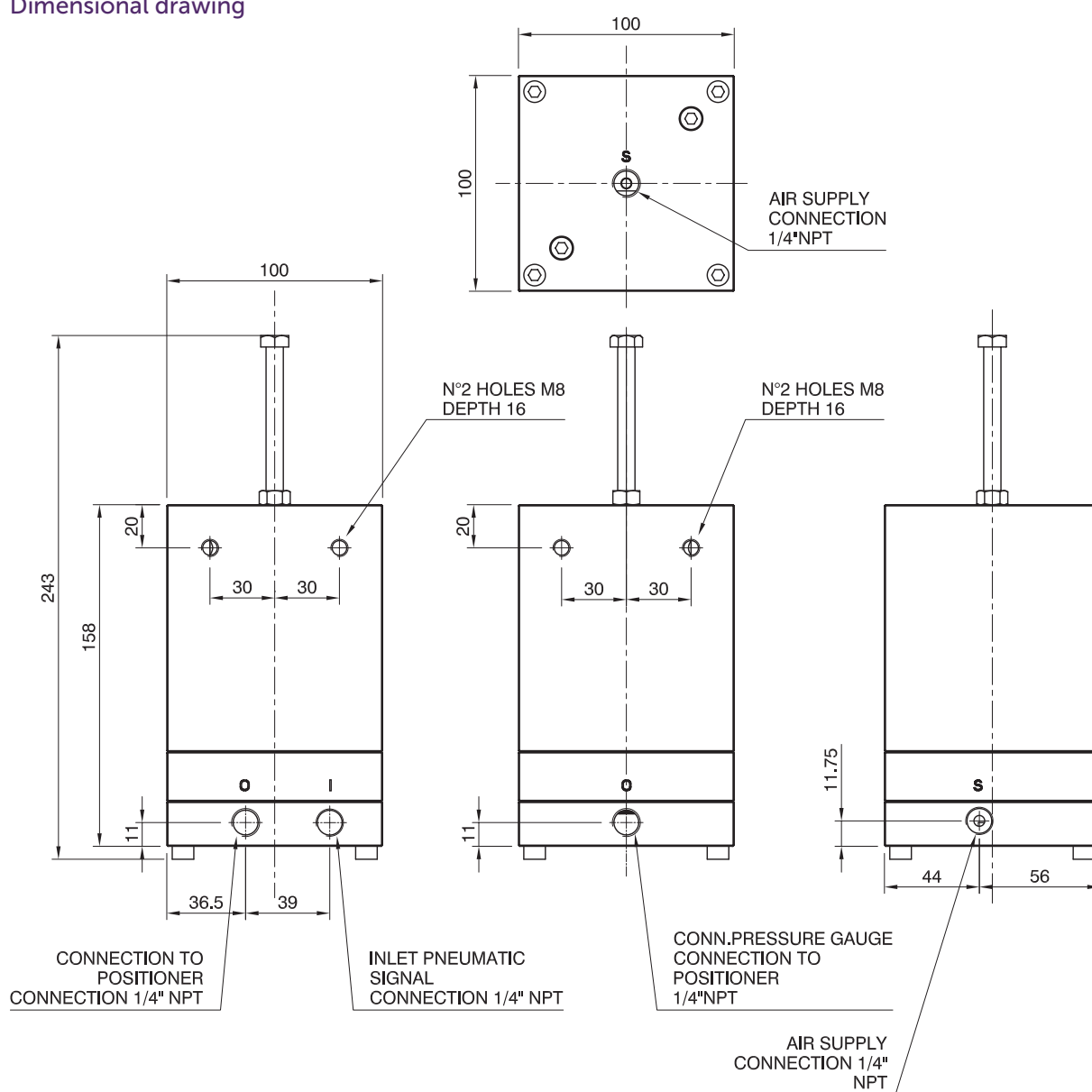
Operating temperature
-20°C to 70°C

Operating pressure
P min = 1.4 bar
P max = 2.5 bar
Design pressure = 10 bar

Weight
4 kg

Feeding connections
1/4" NPT

Dimensional drawing



Benefits

Compact design.

Lockable adjusting screw.

Adjusting screw safety design.

Precise switching pressure and low hysteresis.

Process Automation

The information in this brochure is provided for general informational purposes only. Specifications for products and services are subject to change without prior notice. IMI plc and its subsidiaries own all product brands mentioned herein.

IMI makes no warranties or representations about the accuracy or completeness of the content in this brochure and assumes no liability for any errors or omissions it may contain. We reserve the right to modify, enhance, or discontinue any product or service described herein without prior notification.

IMI STI

Via dei Caravaggi, 15
24040 Levate (BG) ITALY
Tel: +39 035 2928.2
Fax: +39 035 2928.247

www.imiplc.com/process-automation

07057.02/24en

