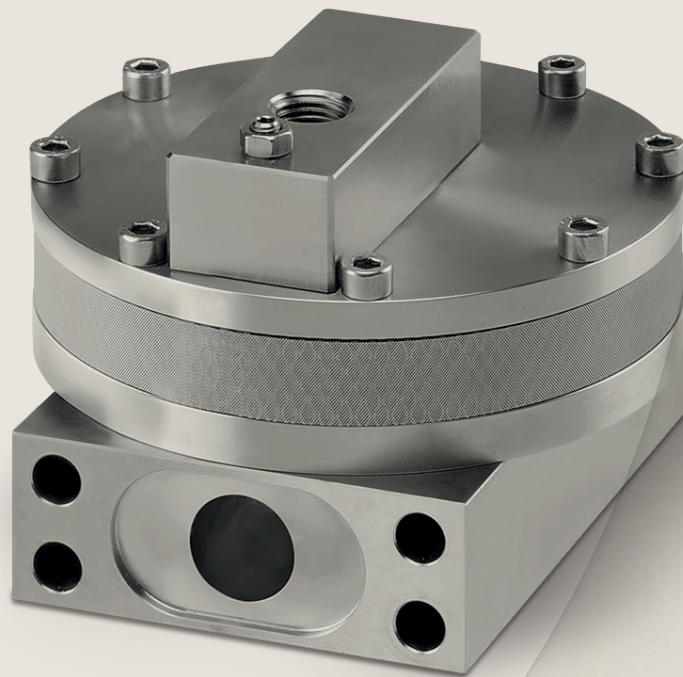


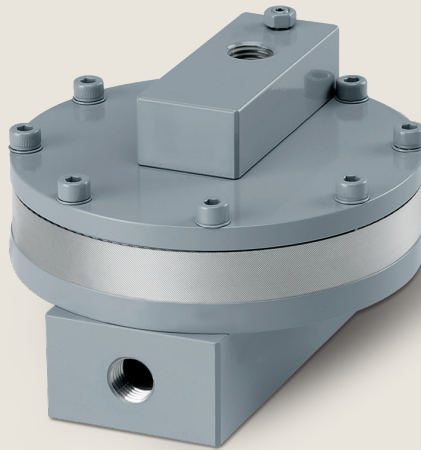
# Process Automation

IMI STI

AV

Volume Booster





AV

## Volume Booster

The Volume Booster (model AV), available sizes 1/4" and 3/4", is designed to meet high speed control valve applications. It produces a high volume boosting action and contains an integral stabilizing by-pass valve controlled by a screwdriver adjustment in the body. By opening this valve it is possible improve the stability of the pneumatic circuit made up of a positioner, volume booster(s) and actuator.

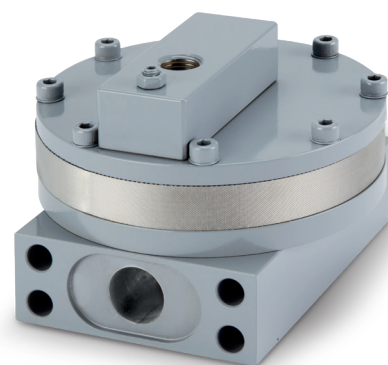
## Product features

Exclusive manifold mounting system. It is a special STI application to connect our accessories. Fittings or nipples are not necessary as the connection is achieved using machined connection faces with sealing 'o' ring. This system saves time for assembly, reduces cost on items such as fittings, reducing inventory and the shortened dimensions save space.

Suitable for standard, offshore, sandstorm and copper-free ambient conditions.

Single and double acting actuators.

Low and high ambient temperature.



AV 1/4" aluminium manifold mounting.

## Technical specifications - AV 1/4"

Housing materials  
Painted RAL 7001 aluminium  
Stainless steel 316

Operating temperature\*  
-20°C to 70°C  
-40°C to 70°C  
-20°C to 85°C

Diaphragm material  
Elastomeric reinforced fabric

Pilot signal connection  
1/4" NPT

CV max  
Inlet = 1  
Outlet = 1

Operating pressure  
P min = 3 bar  
P max = 7 bar  
Design pressure = 10 bar

Output connections  
Manifold mounting  
1/4" NPT

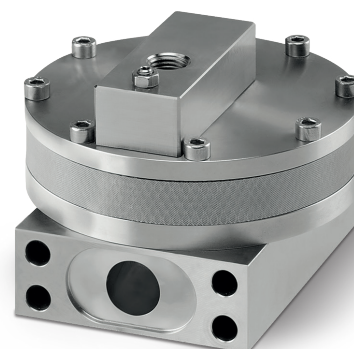
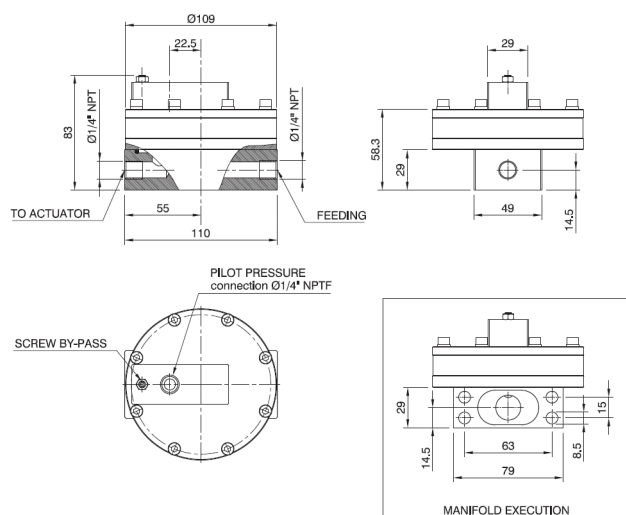
Feeding connections  
1/4" NPT

Options  
Collected exhaust  
Silencer

Weight  
Aluminium = 1.2kg  
Stainless steel 316 = 3.3kg

\* Lower or higher temperature available on request

## Dimensional drawing - AV 1/4"



AV 1/4" stainless steel 316 manifold mounting.

## Technical specifications-r AV 3/4"

Housing materials  
Painted RAL 7001 aluminium  
Stainless steel 316

Operating temperature\*  
-20°C to 70°C  
-40°C to 70°C  
-20°C to 85°C

Diaphragm material  
Elastomeric reinforced fabric

Pilot signal connection  
1/4" NPT

CV max  
Inlet = 4.5  
Outlet = 3

Operating pressure  
P min = 3 bar  
P max = 7 bar  
Design pressure = 10 bar

Output connections  
Manifold mounting  
3/4" NPT

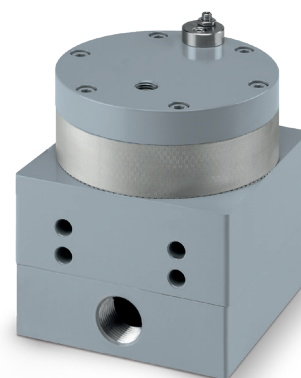
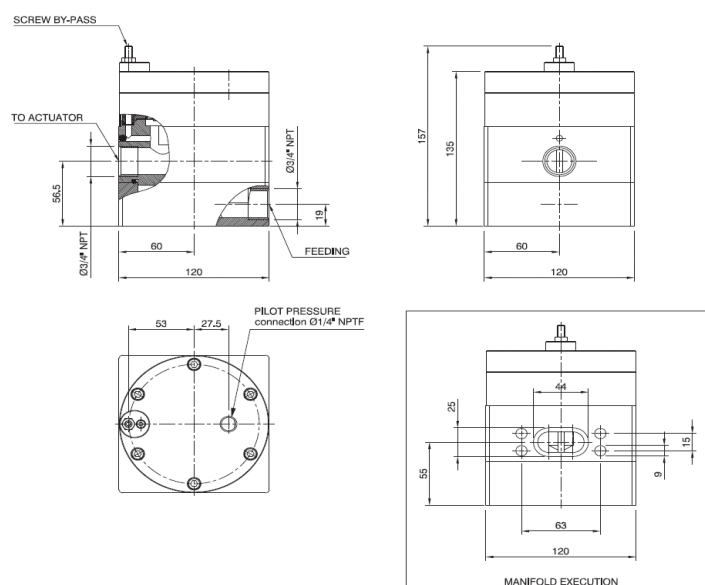
Feeding connections  
3/4" NPT

Options  
Collected exhaust  
Silencer

Weight  
Aluminium = 4kg  
Stainless steel 316 = 10.3kg

\* Lower or higher temperature available on request

## Dimensional drawing - AV 3/4"



AV 3/4" aluminium.

## Benefits

The regulation screw cannot be ejected by the internal air pressure. The regulation screw is accurate and lockable.

The exhaust is protected by double differentiated mesh.

Suitable for one air connection to feed both volume boosters on a double acting actuator.

Less leakage, more repeatability. Using a conical plug seat with controlled deformation for elastomeric air-tight.

# Process Automation

The information in this brochure is provided for general informational purposes only. Specifications for products and services are subject to change without prior notice. IMI plc and its subsidiaries own all product brands mentioned herein.

IMI makes no warranties or representations about the accuracy or completeness of the content in this brochure and assumes no liability for any errors or omissions it may contain. We reserve the right to modify, enhance, or discontinue any product or service described herein without prior notification.

## IMI STI

Via dei Caravaggi, 15  
24040 Levate (BG) ITALY  
Tel: +39 035 2928.2  
Fax: +39 035 2928.247

[www.imiplc.com/process-automation](http://www.imiplc.com/process-automation)

07058.02/24en

