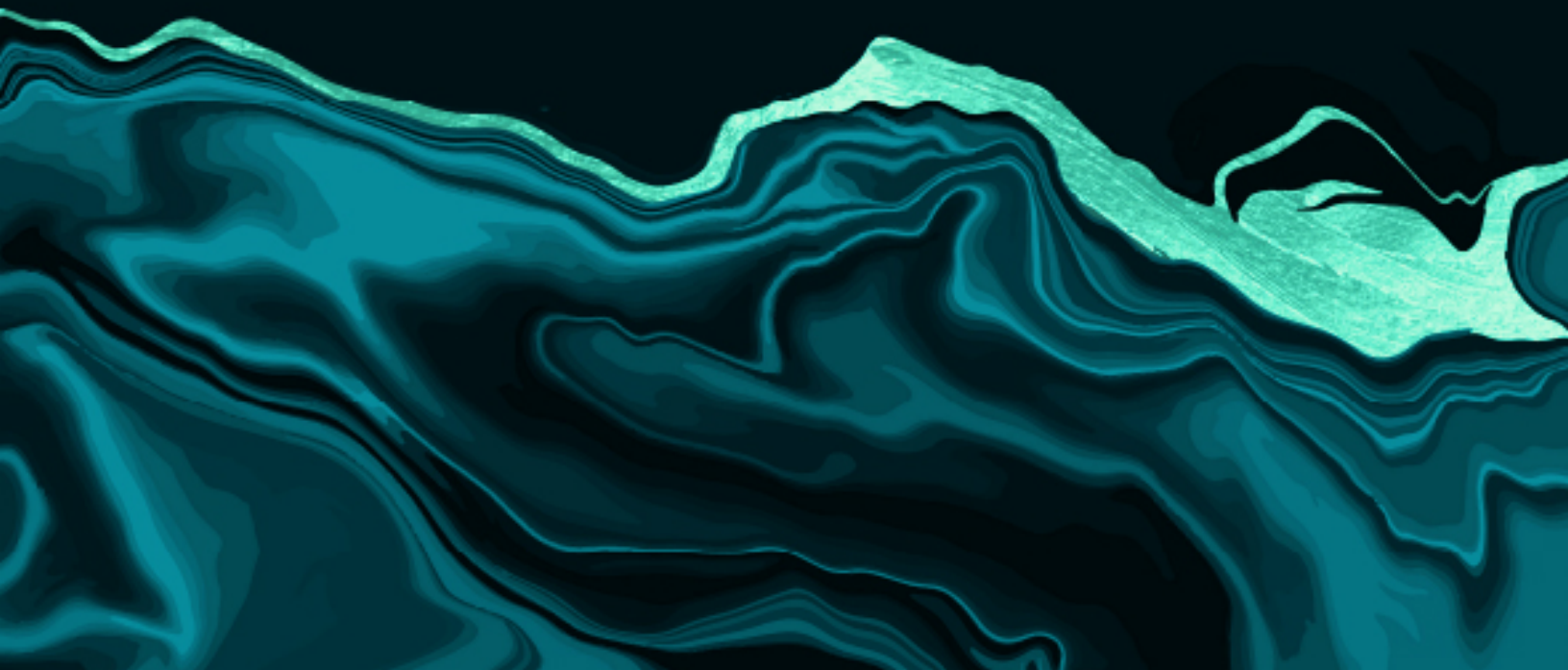


SOLUTION BRIEF

Democratize Data Collection and Combat Secrets Sprawl with Cribl Stream™ and HashiCorp Vault





THE CHALLENGE

As software supply chains become increasingly complex, secrets sprawl is making it hard for security teams to maintain governance while providing access tokens, passwords, certificates, and encryption keys.



THE SOLUTION

HashiCorp Vault can secure, store, and manage access to secrets sent through Cribl Stream's data pipelining engine. Route, reduce, collect, and transform data from any source to any destination, while improving your security posture to regain accountability and control.



THE BENEFITS

Protect customer data with identity-based security automation and encryption-as-a-service

Reduce secrets sprawl by centralizing key management

Quick implementation with Stream and Vault's vendor-agnostic and cloud-agnostic integration

SOLUTION BRIEF

Democratize Data Collection and Combat Secrets Sprawl with Cribl Stream and HashiCorp Vault

Together, Cribl Stream and HashiCorp Vault help you improve the security posture of your data infrastructure, putting you in full control of your data.

The Challenge

Cyber attacks on customer data are increasing, with ransomware attacks alone jumping by 78% in 2021 according to Forbes. This pressure intensifies for regulated industries who must comply with privacy and cybersecurity mandates such as GDPR. Due to disorganized key management, security teams struggle to answer how sensitive data is stored, retrieved, and ultimately how encryption is leveraged to protect data.

As your software supply chain becomes increasingly complex, secrets sprawl is making it hard to maintain governance and provide access when needed, especially when moving to multi-cloud. Secrets sprawl is when your organization's secrets (i.e. passwords, access credentials, etc...) are distributed across many locations, apps, and teams, creating a lack of visibility and control.

With limited access control, credentials are left in systems not designed for secret management – like git repos – leaving an open surface of attack for hackers.

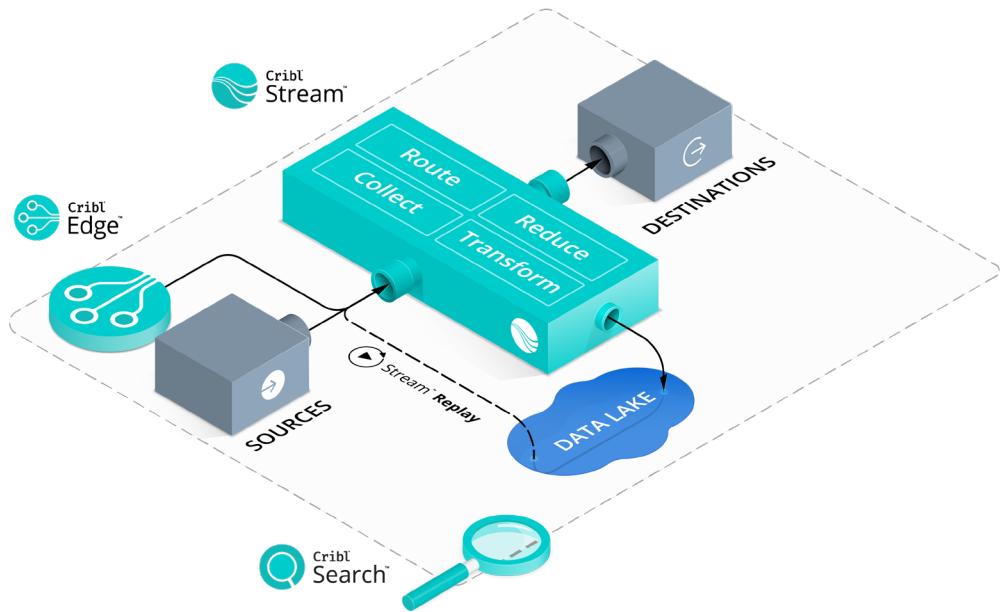
The Solution

The Cribl Stream and HashiCorp Vault [integration](#) allows you to route, reduce, collect, and transform data from any source to any destination within your existing data infrastructure, while ensuring access to sensitive data is centrally managed and secure.

Offload the management of secrets within logs and metrics on Cribl Stream's data pipelining engine to Vault's internal Key Management Service to ensure encryption – even at rest – for your data pipelines.

For any sensitive data sent in and out of Stream, mask credential tokens with a variable so that your operations team can access the info they need without the actual passwords being explicitly visible in the UI. When security teams no longer need to put secrets in Git repos, S3 buckets, etc., they can securely share keys, certificates, and assume roles as needed – saving time and reducing secrets sprawl.

SPOTLIGHT: GIT REPOS
 STORE AND MANAGE
 PASSWORDS OR KEYS IN
 VAULT'S IDENTITY-BASED
 SECRETS AND ENCRYPTION
 MANAGEMENT SYSTEM
 RATHER THAN GIT REPOS
 TO REDUCE SECRETS
 SPRAWL. THIS EXTRA
 LAYER OF SECURITY
 MEANS THAT PEOPLE WHO
 DO NOT HAVE ACCESS
 CANNOT GET ACCESS
 TO KEYS, ALLOWING
 YOU TO SPEED UP DATA
 ONBOARDING, WHILE
 KEEPING YOUR DATA
 PIPELINES SECURE.



The Benefits of using HashiCorp Vault with Cribl's Observability Solution

PROTECT CUSTOMER DATA

86% of consumers state that data privacy is a growing concern for them according to a KPMG corporate data responsibility report. Encrypt sensitive data and redact personally identifiable information in real time through Stream. With Vault's identity-based security automation for application delivery and encryption-as-a-service, reduce the risk of breaches, and ensure the right people have access to the right data.

CENTRALIZE SECRETS MANAGEMENT

Without centralization, it is hard to know what credentials are where, who has access, and what to do when there's a breach. Reduce credential sprawl and build accountability around your data infrastructure with tight access. Encrypt everything at rest, in transit, and within Vault so you can spend 90% less time on secrets management.

EASY INTEGRATION

In order to truly maintain security and governance over your environment, you must be able to analyze the widest set of data possible. Stream and Vault's vendor-agnostic and cloud-agnostic integration allows tools to coexist and bridges gaps by bringing multiple sources together so you can collect and protect data from everywhere, in seconds.

Summary

Cribl Stream allows you to implement a data pipelining engine to help you parse, restructure, and enrich data in flight – ensuring that you get the right data, where you want, in the formats you need. With HashiCorp Vault, you can secure, store, and tightly control access to tokens, passwords, certificates, encryption keys for protecting secrets and other sensitive data passed through Stream. These vendor-agnostic and cloud-agnostic tools allow you to simply plug and play the integration into existing infrastructure, so that the right teams can quickly and securely access the right data.

With Cribl Stream and HashiCorp Vault, customers can:

- *Protect customer data*
- *Centralize secrets management*
- *Move to cloud more quickly and securely*

Together, Cribl's observability solutions integrated with HashiCorp Vault's identity-based secrets and encryption management system help you improve the security posture of your data infrastructure, putting you in full control of your data.

To get started today, [click here to download Cribl Stream](#). Learn more about how you can secure Stream, with HashiCorp Vault [in this blog](#). The [Cribl Slack Community](#) is also a great place to connect with leaders from other teams leveraging both HashiCorp and Cribl.

ABOUT HASHICORP

HashiCorp is a leader in multi-cloud infrastructure automation software. The HashiCorp software suite enables organizations to adopt consistent workflows and create a system of record for automating the cloud for infrastructure provisioning, security, networking, and application deployment. HashiCorp's portfolio of products includes Vagrant™, Packer™, Terraform®, Vault™, Consul®, Nomad™, Boundary, and Waypoint™. HashiCorp offers products as open source, enterprise, and as managed cloud services. The Company is headquartered in San Francisco, though most of HashiCorp employees work remotely, strategically distributed around the globe. For more information, visit hashicorp.com or follow HashiCorp on Twitter [@HashiCorp](https://twitter.com/HashiCorp).

ABOUT CRIBL

Cribl makes open observability a reality for today's tech professionals. The Cribl product suite defies data gravity with radical levels of choice and control. Wherever the data comes from, wherever it needs to go, Cribl delivers the freedom and flexibility to make choices, not compromises. It's enterprise software that doesn't suck, enables tech professionals to do what they need to do, and gives them the ability to say "Yes." With Cribl, companies have the power to control their data, get more out of existing investments, and shape the observability future. Founded in 2017, Cribl is a remote-first company with an office in San Francisco, CA. For more information, visit www.cribl.io or our [LinkedIn](#), [Twitter](#), or [Slack](#) community.