

Packaged in Pairs



## WORKLIGHTS



### EW4009 SERIES

#### Pair of Heated LED DOT Worklight

The EW4009 Series worklight offers the latest technology and the very brightest white light for your application. Designed for headlight replacement, as well as vehicles working in inclement weather, this LED model offers over 80,000 hours of maintenance-free life expectancy coupled with low amp draw. High-intensity light output and CE rating makes this the ideal choice for a wide variety of DOT applications. Additional features include 12-24 VDC operation, shock-resistant mounting, IP67 waterproof breather and a 5 year warranty.

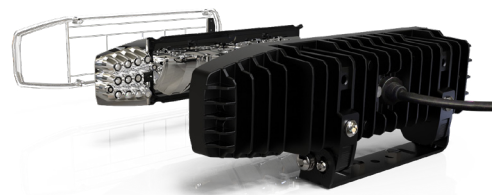
#### Models

PART NO.	VOLTAGE	AMPS (Low Beam)	AMPS (High Beam)	RAW LUMENS (Low Beam)	RAW LUMENS (High Beam)
EW4009	12-24	1.4	3.4	1000	1600

#### Features and Benefits

- Packaged in pairs
- High Beam / Low Beam / Indicator / Marker
- Snow-melt and anti-icing system
- DOT certified
- Unique aluminum heatsink housing design for maximum heat management
- Black powder-coated, diecast aluminum alloy housing and heat sink
- UV stabilized polycarbonate lens and reflector optics

#### Components



#### Accessories

- EZ4009-L/R - Single DOT light replacement
- EZ4009-WIRE - 10' Replacement wire harness
- EZ4009-MK - Replacement mounting kit