

EW4011
Comes in pairs



Universal indicator can be
mounted on top or sides

WORKLIGHTS



EW4011

Four 12-Watt LEDs

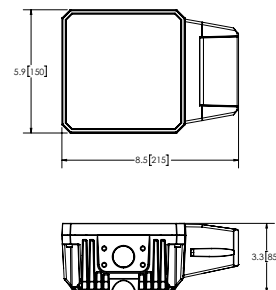
The EW4011 Series DOT certified worklight offers the latest technology and the brightest whitelight for your application. This LED model is intended for headlight replacement as well as vehicles operating in inclement weather where visibility is impaired. The EW4011 features a heated lens to melt snow and ice and offers over 80,000 hours of maintenance-free life expectancy with a low amp draw. High-intensity light output and CE rating make this LED worklight the ideal choice for snowplows, trucks, tractors, ATVs or any other vehicle applications. Additional features include 12-24 VDC operation, shock-resistant mounting, IP67 waterproof breather and a 5-year warranty.

Models

PART NO.	VOLTAGE	LUMENS (RAW)	AMPS
EW4011	12-24	905 (low beam) 2,371 (high beam)	1.5 (low beam) 3.2 (high beam)

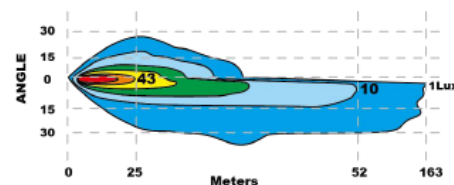
Features and Benefits

- High Beam (6,170 Kelvin) / Low Beam (5,920 Kelvin) / Position Light / Indicator
- Snow-melt and anti-icing system (patented technology)
- Dual options for bottom and back mounting
- Multi-directional mounting for signal light (left/right/top)
- Unique aluminum heatsink housing design for maximum heat management
- Black powder-coated, diecast aluminum alloy housing and heat sink
- Flush mount lens to alleviate snow buildup
- Units tested per SAE J994 random sinusoidal. Units vibrated for 30 minutes on a 15-minute cycle for a total of 6 hours at 10G along X, Y & Z axes.
- Integration of an automatic lens heater that turns on when ambient temperatures reach or get below (approximately) 35°F (2°C). The heater will self-regulate at a max temperature of 154°F (68°C) when operating.
 - 1 minute : 0°F (-18°C)
 - 5 minutes : 30°F (-1°C)
 - 10 minutes : 59°F (15°C)
 - 1 hour : 154°F (68°C) – the maximum temperature the light will reach

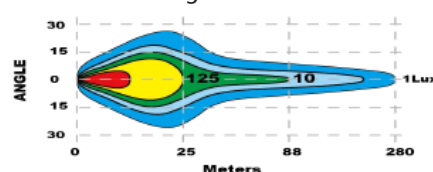


Beam Pattern

Low Beam



High Beam



Accessories

- EZ4011-LIGHT - Replacement lighthead w/o harness