

Flood

Spot



WORKLAMPS

CE

R10

IP67

RoHS

EW3006 SERIES Square LED

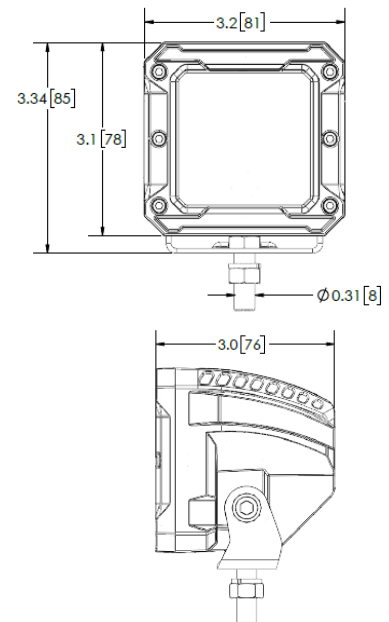
The EW3006 Series worklamps offer the latest technology and the very brightest white light for your application. This LED model offers over 80,000 hours of maintenance-free life expectancy coupled with extremely low amp draw. High-intensity light output and CE rating makes this LED worklamp the ideal choice for a wide variety of applications. Features 12-24 VDC operation, a choice of flood or spot beams, aluminum housing and a 3 year warranty.

Models

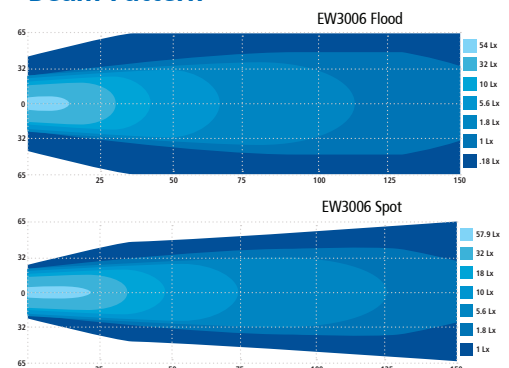
PART NO.	VOLTAGE	AMPS	RAW LUMENS	TYPE
EW3006-F	12-24	1.25	1615	Flood
EW3006-S	12-24	1.13	1630	Spot

Features and Benefits

- Six 3-watt LEDs
- Includes 2-pin deutch connector and 6-inch male connector
- Compact 3" form allows for multiple mounting locations
- Unique aluminum heatsink housing design for maximum heat management
- Acrylic lens
- Bezel options: black, red, blue and yellow
- Steel-mounting bracket



Beam Pattern


 T 800-635-5900 | orders@eccogroup.com