



# ECCO<sup>®</sup>

FLEET SOLUTIONS



## PRODUCT MIX

[ECCOESG.COM](http://ECCOESG.COM)



## BE SEEN ON SITE

Lightbars, beacons, minibars, safety directors and directional lights provide an essential layer of safety whether crews are in transit or operating on the work site. A complement of warning lights on fleet vehicles ensures visibility in low-light and extreme weather conditions. Alert and direct on-coming drivers with these performance-optimized signaling devices.

## LIGHTBARS



### 12+ SERIES VANTAGE™

SLEEK, LOW-PROFILE

12-24V | 48 FP | 24-72" Lengths

ICE Optics offer brighter appearance for better visibility

SAE Class I, CA T13, CE, R10, R65



### 16 SERIES

COMPACT, LOW-PROFILE

12-24V | 31 FP | 22-91" Lengths

Single- or dual-color options | Only 1.6" high

SAE Class I, CA T13



### 21 SERIES

DELIVERS OFF-ANGLE PERFORMANCE

12V | 31 FP | 22-91" Lengths

Integrated LED Safety Director™

SAE Class I, CA T13, R10



### 27 SERIES

DELIVERS OFF-ANGLE PERFORMANCE

12V | 31 FP | 22-91" Lengths

Centrally controlled flexibility

SAE Class I, CA T13, R10

## BEACONS



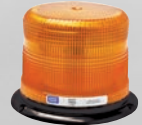
### 7460A

COMPACT, LOW-PROFILE

12-36V | 3.6A | 80 FPMx8

Pulse8 flash pattern

SAE Class I, CE, R10, IP66



### 7945A

LED BEACON

12-48V | 1.3A | 11 FP

Reinforced polypropylene base

SAE Class II, CE, R10, RoHS



### 7965A

LED BEACON

12-24V | 3.6A | 11 FP

Aluminum base

SAE Class I, CE, R10, RoHS



### EB7185 SERIES

DUAL-COLOR

12-24V | 8.6A | 24 FP

AAA, CAA, CAC, AAA-T13, CAA-T13

SAE Class I, CA T13, R10, IP55, AMECA, RoHS

## MINIBARS



### 5550CA REFLEX™

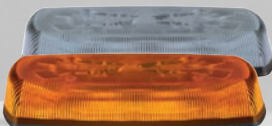
11" MICROBAR

12-24V | 3.4A | 91 FP

Sync-capable

SAE Class I, CA T13, CE, R10, RCM,

IP65, R65, RoHS



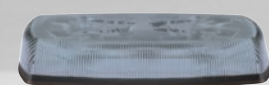
### 5580A / CA REFLEX™

15" MINIBAR

12-24V | 2.7A | 18 FP

Sync-capable

SAE Class II, CE, R10, IP65, IP69K, RoHS



### 5585CA REFLEX™

15" MINIBAR

12-24V | 4.6A | 18 FP

Sync-capable

SAE Class I, CA T13, CE, R10, RCM,

IP65, IP69K, RoHS



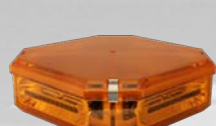
### 5590A / CAC REFLEX™

15" MINIBAR

12-24V | 6.0A | 18 FP

Combines reflective and TIR optics

SAE Class I, CA T13, CE, R10, IP65, IP69K



### 27-DB006-E DUOBEAM™

10" MINIBAR

12V | 6.4A | 19 FP

3 mounting options

SAE Class I, CA T13

## SAFETY DIRECTORS™



### ED3335A

HIGH-INTENSITY WARNING

12-24V | 49" | 9 FP

8 reflective modules with 20 LEDs

SAE Class I, CE, R10



### 3410A / 3435A

COMPACT WARNING

12V | 48" | 9 FP

High-intensity with slim design

SAE Class I, CE, R10, RoHS



### NASLTS847

TRAFFIC DIRECTOR

12V | 47" | 13 FP

Interior or exterior use

SAE Class I, CA T13



### 37038AS

HIGH OUTPUT WARNING

12-24V | 46" | 32 FP

High-output warning with low amp draw

SAE Class I



### EW3420

COMBO UTILITY BAR

12-24V | 50" | 19 FP

Flood light with Safety Director™

SAE Class I, CA T13

## DIRECTIONALS



### 3510A / C

SURFACE MOUNT

12-24V | 0.7A | 16 FP

In-line waterproof driver

SAE Class I, CA T13 (A only), CE, R10,

IP67, RoHS



### ED3703A

SINGLE-COLOR

12-24V | 0.4A | 21 FP

Sync-capable | Steady-burn

SAE Class I, CA T13, R10, R65, IP67, RoHS



### ED3704A / AC

SINGLE- & SPLIT-COLOR

12-24V | 0.7A | 30 FP (A), 22 FP (AC)

Sync-capable | Steady-burn

SAE Class I, CA T13, R10, R65, IP67, RoHS



### ED3777A / AW

SINGLE- & DUAL-COLOR

12-24V | 1.3A (A), 1.4A (AW)

29 FP (A), 69 FP (AW)

180° warning with work and puddle light

SAE Class I, CA T13 (A only), CE (A only),

R10, R65 (A only), IP67, RoHS



### ED5051A / AW

SINGLE- & DUAL-COLOR

12-24V | 0.7A | 29 FP (A), 69 FP (AW)

Sync-capable and dimmable

SAE Class I, CA T13, R10, R65, IP67,

RoHS



### ED3701A

SINGLE-COLOR

12-24V | 0.8A | 29 FP

Sync-capable | Ultra low-profile

SAE Class I, CA T13, R10, R65, IP67, RoHS



### ED3702AC / AG

DUAL-COLOR

12-24V | 1.25A | 69 FP

Sync-capable | Ultra low-profile

SAE Class I, CA T13, R10, IP67, RoHS



### 9014A

HIDE-A-LED™

12-24V | 0.9A | 16 FP

Head/tail light or surface mountable

CE, R10, IP67



### ED9040A

HIDE-A-LED™

12-24V | 1.2A | 29 FP (Single-Color)

Slim low-profile | All-in-module

SAE Class I, CA T13, R10, R65, IP67, AMECA



### ED9040AW

HIDE-A-LED™

12-24V | 0.6A | 69 FP (Dual-Color)

Slim low-profile | All-in-module

SAE Class I, CA T13, R10, R65, IP67,

AMECA



### ED3760AW

RUNNING BOARDS, PUSH BUMPERS, TAILGATES

12V | Dual-Color | 32 FP

Universal surface mount capability | Each 12" section offers dual-color

SAE Class II, CA T13, IP67, RoHS



### ED9215AW

COMBO WORKLIGHT AND WARNING LIGHT

12-24V | 3.3A | 69 FP

135° warning light with powerful worklight in one unit

SAE Class I, CA T13, R10, IP67, CISPR25, RoHS





## EXTEND THE DAY

Worklights, utility bars and interior lighting illuminate the job site, highlight hazards around equipment and make it easier to find tools in the bed or compartments. ECCO's line of white lighting devices offer thousands of hours of service-free operation and feature advanced optics to focus the intense light output. Their rugged and weather-resistant design can withstand tough working conditions to deliver clear and reliable lighting when needed most.

### UTILITY BARS



**EW3109 / EW3120**  
SINGLE ROW

12-24V | 9" and 875 Lumens (3109), 20" and 2,175 Lumens (3120)  
Flood / Spot Combo | Adjustable end or extrusion mount  
CE, IP67, RoHS



**EW3214 / EW3225**  
DOUBLE ROW

12-24V | 14" and 2,800 Lumens (3214), 25" and 4,750 Lumens (3225)  
Flood / Spot Combo | Adjustable end or extrusion mount  
CE, IP67, RoHS



**EW3420**  
50" COMBINATION UTILITY BAR

12-24V | 50" | 12,600 Lumens  
Flood light with Integrated Safety Director™ | Steady burn amber  
SAE Class I, CA T13

### WORKLIGHTS



**E92004**  
SIX 3-WATT LEDs  
12-24V | Flood | 700 Lumens  
Polycarbonate lens  
CE, R10, IP67, RoHS



**E92005**  
NINE 3-WATT LEDs  
12-24V | Flood | 1,000 Lumens  
Polycarbonate lens  
CE



**E92006**  
NINE 3-WATT LEDs  
12-24V | Flood | 1,450 Lumens  
Polycarbonate lens  
CE, RoHS



**E92007**  
FIVE 3-WATT LEDs  
12-24V | Flood | 750 Lumens  
Polycarbonate lens  
CE, R10



**EW2112-DEU**  
SEVEN 1-WATT LEDs  
12-80V | Flood | 1,000 Lumens  
Deutsch connector  
CE, R10, UL, IP67, RoHS



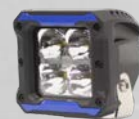
**EW2411**  
SIX 3-WATT LEDs  
12-24V | Flood | 1,000 Lumens  
Polycarbonate lens  
CE, R10, IP67, RoHS



**EW2451**  
NINE 3-WATT LEDs  
12-24V | Flood | 1,300 Lumens  
360° rotation axis | Switched  
CE, IP67, RoHS



**EW2530**  
SIX 10-WATT LEDs  
12-24V | Flood | 3,750 Lumens  
Deutsch connector | 120° beam pattern  
CE, R10, CISPR25, IP67, IP69K, RoHS



**EW3007-F**  
FOUR 5-WATT LEDs  
12-24V | Flood | 1,025 Lumens  
3-18 AWG conductor cable  
CE, IP67, RoHS



**EW3011**  
TEN 5-WATT LEDs  
12-24V | Spot | 5,357 Lumens  
360° continuous rotation | 135° tilt range  
CE, IP68 (lighthead only)



**EW4030**  
FIFTY-SIX 1.5-WATT LEDs  
12-24V | Flood | 4,950 Lumens  
Deutsch connector | 170° articulated mount  
CE, R10, IP67, RoHS

### COMPARTMENT LIGHTING



**EW0134**  
LED STRIP LIGHTING  
12V | 25' Strip | 200 Lumens  
Spliceable  
CE, IP67, RoHS



**EW0117**  
LED STRIP LIGHTING  
12V | 24" Strip | 700 Lumens  
Spliceable  
CE, IP65, RoHS



**EW0111**  
LED STRIP LIGHTING  
12V | 36" Strip | 1,400 Lumens  
Spliceable  
CE, IP65, RoHS



**EW0200**  
SURFACE MOUNT  
12-24V | 0.4A | 425 Lumens  
Flood | Switched  
CE, RoHS



**EW0204**  
SURFACE MOUNT  
12-24V | 0.8A | 750 Lumens  
Flood | PIR Motion Sensor  
R10, IP67, RoHS



**EW0205**  
SURFACE MOUNT  
12-24V | 0.8A | 750 Lumens  
Flood  
R10, IP67, RoHS



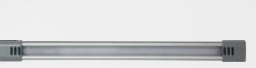
**EW0600**  
SURFACE MOUNT  
12-24V | 18" | 2,000 Lumens  
Flood | Switched  
CE, RoHS



**EW0700**  
SURFACE MOUNT  
12-24V | 13" | 400 Lumens  
Flood | Switched | Pivotal  
CE, RoHS



**EW0701**  
SURFACE MOUNT  
12-24V | 21.5" | 1,250 Lumens  
Flood | Switched | Pivotal  
CE, RoHS



**EW0801**  
90° CORNER MOUNT  
12-24V | 21.5" | 400 Lumens  
Flood | Concealed fasteners  
CE, IP67, RoHS





## REDUCE RISK WITH REVERSING SAFETY

Maneuvering around the job site and the yard present unique safety challenges. Equipping dependable back-up alarms and camera systems minimize those risks; protecting crews and pedestrians alike. ECCO was the first to introduce commercial back-up alarms and these time-tested devices are designed to consistently operate at peak performance.

### ALARMS



**510**  
SURFACE MOUNT  
12V | 97dB | 0.2A  
Compact size | Self grounding  
SAE Type C, CE, R10, UL, IP65, AMECA



**530**  
SURFACE MOUNT  
12-24V | 102dB | 1.0A  
Compact size | Self grounding  
SAE Type F, CE, R10, UL, IP65, AMECA



**SA950**  
SURFACE MOUNT  
12-24V | 82-102dB | 0.4A  
Smart Alarm® | Self grounding  
CE, R10, UL, IP65



**575**  
SURFACE MOUNT  
12-24V | 107dB | 0.9A  
Compact size  
SAE Type B, CE, R10, UL



**SA901N**  
SURFACE MOUNT  
12-24V | 82-107dB | 0.3A  
Smart Alarm® | Sealed in epoxy  
CE, R10, UL, IP64



**EA5200**  
SURFACE MOUNT  
12-24V | 97dB | 1.0A  
Multi-Frequency™ Alarm  
SAE Type C, CE, R10, RCM, AMECA



**EA9724**  
SURFACE MOUNT  
12-24V | 77-97dB | 0.7A  
Smart Alarm® | Multi-Frequency™ Alarm  
SAE Type F, CE, R10, IP64

### CAMERA SYSTEMS



**K7000B GEMINEYE™**  
7" LCD COLOR SYSTEM  
18 Infrared LEDs | Sunshade Included  
Two camera expandable  
FCC (camera only), CE,  
IP69K (camera only), RoHS



**EC5603-K GEMINEYE™**  
5.6" LCD COLOR SYSTEM  
Soft touch buttons on monitor  
Three camera expandable  
FCC, CE, R10, RCM,  
IP69K (camera only), RoHS



**EC4200-K GEMINEYE™**  
4.3" LCD COLOR MIRROR SYSTEM  
Integrated mirror | Flush mount camera  
Two camera expandable  
FCC, CE, IP67 (camera only), RoHS

## THE ECCO CARE PROMISE

ECCO is known the world over as the premier commercial warning and safety products manufacturer. Our reputation for excellence is rooted in an unwavering commitment to protecting your most important asset—your people. Helping them do their jobs safely and efficiently drives us to exceed the most rigorous engineering and service standards.

Each day, we hold ourselves accountable to the ECCO Care Promise—excellent customer service, superior products, the industry's fastest lead times, customization and a no-hassle warranty.

### NO-HASSLE WARRANTY

Introducing **ECCO's 5-Year, No-Hassle Warranty** covering a wide range of safety solutions. Exceptions apply to a limited amount of products:

- Replacement parts and accessories (1 year)
- Camera systems (1 year)
- Light-duty and driver-based alarms (2 years)
- Halogen, strobe beacons and minibars (1 year)
- Non-permanent mount products such as EW2461 (1 year)

Visit [www.eccoesg.com](http://www.eccoesg.com) for additional product details.

**THE ECCO CARE PROMISE ENSURES** that our products and our people perform to a higher standard—so that you can, too. Look to ECCO for reliability when you need it most.





**[ECCOESG.COM](http://ECCOESG.COM)**

© 2020 ELECTRONIC CONTROLS COMPANY. ALL RIGHTS RESERVED  
833 WEST DIAMOND STREET, BOISE, ID 83705  
800-635-5900 | [ORDERS@ECCOGROUP.COM](mailto:ORDERS@ECCOGROUP.COM)