



INTERIOR LIGHTING



EW0360/EW0370 SERIES

LED Interior Lighting

These surface mount LED interior lights are available in a variety of lengths and with either clear or frosted (diffused light) lenses. Robust aluminum housings and concealed fasteners complete the package.

Models

PART NO.	TYPE	LENGTH	LUMENS	LUMENS
EW0360	27 LED	5.4" 136mm	400	0.5
EW0361	27 LED, SWITCHED	5.4" 136mm	400	0.5
EW0370	42 LED	7.3" 186mm	575	0.6
EW0371	42 LED, SWITCHED	7.3" 186mm	575	0.6

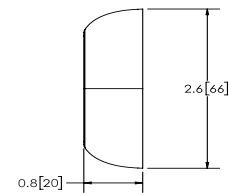
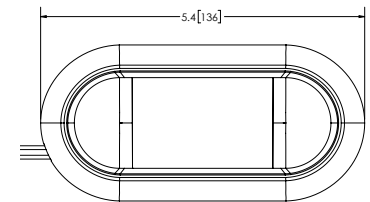
Features and Benefits

- 12-24 VDC
- Surface mount with concealed fasteners (hardware included)
- Aluminum housing
- Frosted lens
- Switched and non-switched options

Accessories

- EZ0120 PIR Motion Sensor - 100° cone, adjustable sensitivity (automatically activates light when human movement is detected)
- EZ0121 - Interior push button switch, 12-24V
- EZ0122 - Interior touch switch with dimmer, 12-24V

EW0360/EW0361



EW0370/EW0371

