

# CLIMATE & ENERGY | INDUSTRY ROADMAP

## Career Paths and Desired Skills

The University of Chicago's robust, interdisciplinary curriculum equips students for a wide array of careers focused on making a positive impact on both the climate and energy sectors. Students from a variety of majors pursue career pathways in organizations in the private, non-governmental, and public sectors. Skills in data, policy, environmental science, business, and analysis to enable students to make an impact in organizations that are tackling the most pressing challenges for the climate and revolutionizing our grid and energy supply.

### Entry-Level Roles

### Key Functions

### Internships to help you get there

#### ENERGY TRADING ANALYST

Energy trading can involve operation of commercial power assets, including dispatching power assets, optimizing assets, and hedging renewable power portfolios. It can also include broader commodity trading in the energy sphere.

- Develop & optimize trading activities within power markets
- Propose hedging strategies to optimize assets & minimize risks
- Model risks and opportunities

- Market Analyst Intern, Castleton Commodities
- Commercial Intern, Constellation

Skills: SQL, Python | Familiarity with Energy Market | Ability to analyze large datasets | Quantitative reasoning | Financial acumen

#### ASSOCIATE PROJECT DEVELOPER

Project developers in energy, including renewable energy development, coordinate teams of engineers, finance professionals, and other team members to orchestrate the planning and building of energy generation facilities.

- Track & manage development schedules
- Oversee cross-functional team tasks
- Manage budgets for renewable projects

- On-Shore Wind Development Intern, Invenergy
- Development Intern, Ørsted

Skills: Project Management and coordination | Strong communication and interpersonal skills | Highly adaptable and flexible

#### CONSULTANT, SUSTAINABILITY AND CLIMATE

Consultants serve an important role in the sustainability ecosystem, advising clients on ESG compliance, sustainability strategy, best governance practices, and broader ESG strategy.

- Audit company practices in ESG
- Advise on best practices for improving sustainability, resource consumption, and product development
- Develop models to align company strategy with ESG goals

- Intern, National Renewable Energy Laboratory
- Analyst Intern, ICF

Skills: Problem solving | Quantitative research and reasoning | Advanced Excel and PowerPoint skills | Public Speaking

#### PROGRAM ASSOCIATE

Program Associates help advocacy and research non-profits to best leverage organizational resources and accomplish their missions, whether that is stewarding donor gifts focused on climate, tackling water remediation projects, and advocating for clean power.

- Coordinate with partnership organizations to build support
- Collaborate with experts to advocate for policies
- Administer program grants

- Program Management Intern, Delta Institute
- Wetlands Advocacy Program Intern, The Nature Conservancy

Skills: Strong project management skills | Relationship management abilities | Strong written and verbal communication skills

#### CORPORATE SOCIAL RESPONSIBILITY ASSOCIATE

Corporate Social Responsibility (CSR) team members often integrate broader Environmental, Social, and Governance (ESG) goals into regular business operations and communicate out the organization's impact to external partners, audiences, and stakeholders.

- Communicate company ESG positions to a broad audience.
- Collaborate to integrate policies into business operations
- Engage external stakeholders to promote partnerships

- CSR Intern, Urban Outfitters
- ESG Intern, Thermo Fisher Scientific

Skills: Sustainability domain area expertise | Verbal and written communication abilities | Supply chain and operations interest

#### PROGRAM SPECIALIST/SCIENTIST

Program specialists and scientists operate in government agencies to conduct research and implement regulations focus on the environment and climate.

- Conduct research in scientific disciplines to support agency's mission
- Analyze policy and impelment regulatory actions
- Develop and present reports

- CSR Intern, Urban Outfitters
- ESG Intern, Thermo Fisher Scientific

Skills: Scientific Domain area expertise or experience | Interpersonal skills | Bench science skills | Data analysis skills

## BUILDING EXPERIENCE FOR

# CAREERS IN CLIMATE & ENERGY

There are a number of events and resources to help prepare you for a career in Climate and Energy research:

## EVENTS

### Fall Quarter

- September 30 | Applications Open for Winter Break Climate and Energy Treks to New Delhi, India and Washington, D.C.
- October 1 | Meet the UChicago Champions Employer Networking
- October 2 | UChicago Career & Internship Fair
- October 22 | National Lab Application Bootcamp
- October 28 | Engineering Fellows Application Deadline
- October 30 | EPIC Climate Frontiers Career Fair
- November 11 | BSCD Fellowship Applications Open
- November 12 | Invenergy Information Session
- November 18-21 | COP29 Trek to Baku, Azerbaijan
- November 21 | Trek to Argonne National Lab

### Winter Quarter

- January 6 | Applications Open for Spring Break STEM Treks to Vienna, Austria; Los Angeles, CA; Seattle, WA, and New York, NY
- January 14 | STEM Recruiting Night
- January 27 | Introduction to Government Careers
- February 6 | Academic Coffee Connections with Faculty & Researchers
- February 13 | Careers in Climate & Energy Office Hours

### Spring Quarter

- April 2 | Undergraduate Research Panel
- April 8 | Cleantech Startup Panel
- April 15 | Public Policy Leaders Application Deadline
- April 15 | Financial Markets Program Application Deadline
- April 24-25 | Quantum Recruiting Forum
- April 30 | Tips and Tricks for Policy Research Internships
- May 9 | Social Impact Competition

## REPRESENTATIVE EMPLOYERS, GRADUATE SCHOOLS, AND FUNDING OPPORTUNITIES

### Research Institutes & National Labs

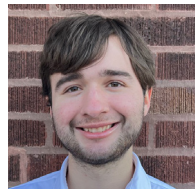
Marine Biological Laboratory  
Argonne National Laboratory  
Scripps Institution of Oceanography  
Salk Institute for Biological Studies  
Pacific Northwest National Laboratory  
National Renewable Energy Laboratory

### Industry

Morgan Stanley  
RWE Clean Energy  
NextEra  
Invenergy

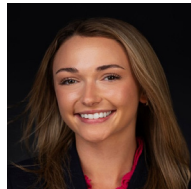
### Graduate Schools

Columbia University  
Stanford University  
MIT  
Northwestern University



### Andres Llado Muñiz, AB'22

Major: Environmental Science, Global Studies  
Involvement: RA in Geophysical Sciences, Harris RA, Law and Politics  
Post-Graduation Plans: Consultant, Climate Change and Sustainability Services, EY



### Hannah Rogers, AB'24

Major: Economics  
Involvement: COP28 Delegation, Peer Tutoring  
Post-Graduation Plans: Energy Policy Associate, Capstone