

# POLICY & SOCIAL IMPACT | INDUSTRY ROADMAP

## Career Paths and Desired Skills

Policy and social impact professional opportunities range widely. They include positions in government, public policy, nonprofits, and private/public sector partnerships. Through policy and service, measures are designed and implemented for positive social impact. Career paths vary broadly, accommodating all student interests and strengths.

### *Sector*

### *Key Functions*

### *Select Skills*

## GOVERNMENT/PUBLIC SECTOR

Careers vary widely - according to level (federal, state, local) and field (education, legal, security & protection, etc.).

- Policy Implementation
- Policy Analysis
- Policy Impact

- Analytical Skills
- Statistical Programming
- Communication
- Coding
- Research

## PUBLIC POLICY

Students are often attracted to public policy because of a desire to contribute to social good. Public policy careers are not just in politics or nonprofits; policy encompasses a wide range of careers across sectors.

- Agenda Setting
- Policy Formulation
- Policy Implementation
- Analysis and Evaluation

- Policy Memo Writing
- Techniques for Advocacy
- Data Visualization
- Coding

## SOCIAL SERVICE NONPROFITS

Nonprofit organizations are mission driven, serve the public, value volunteerism and altruism, are governed by a board of directors, and are flexible and autonomous.

- Direct Service
- Policy and Advocacy
- Think Tanks
- Intermediary and Capacity Building
- Philanthropic organizations

- Communication
- Critical thinking & problem solving
- Fundraising
- Research
- Understand stats
- Grant writing and management

## PRIVATE SECTOR

Companies and organizations recognize the value of the "triple bottom line" approach: people, planet, profit. As a result, students seeking public interest careers are exploring opportunities in the private sector.

- Corporate Social Responsibility
- Community Development Financial Institutions (CDFIs)
- Social Enterprises
- Nonprofit Consulting

- Analytical skills
- Excel & PowerPoint
- Problem Solving
- Interpersonal skills

# NAVIGATING UCHICAGO CAREERS IN POLICY & IMPACT

Career Advancement offers a number of events and resources to help prepare you for a career in policy and service:

## JOIN

Energy Policy Institute, Institute of Politics, International Innovation Corps, Office of Civic Engagement, Pozen Family Center for Human Rights, The Pearson Institute, related RSO's.

## ENGAGE

Sign up for public policy and service treks including:

### Uniquely Nonprofit

Site visits include The Resurrection Project, Youth Guidance, Illinois Coalition for Immigrant and Refugee Rights, Refugee One, Heartland Alliance, Plant Chicago, Innisfree Village.

### Washington DC

Site visits include Human Rights Watch, Brookings Institution, Freedman Consulting, Families USA.

### Environmental & Urban Policy

Site visits include City Hall, Metropolitan Planning Council, Lincoln Park Zoo.

Attend Fried Public Policy and Service Workshops, including:

- ENERGIZE! Intensive Environmental Job Search
- Health Policy Seminars
- Public Sector Info Sessions, Workshops, and Networking Events
- Policy and Service Treks

## EXPLORE

**Volunteer opportunities:** Eg. Office of Civic Engagement, Neighborhood Schools Program, Maroon Tutor Match

**Government, policy and service internships:** Eg. White House Internship Program, Heartland Alliance, Delta Institute, Bureau of Legislative Affairs, Northwest Immigrant Rights

**Externships:** Citizens' Climate Lobby-Political Will for a Livable World

**UChicago graduate schools (Harris School of Public Policy & School of Social Service Administration):** Attend courses, campus visits, joint BA/MPP program, BA/MA program.

## SELECT CAREER PATHS AND EMPLOYERS

### GOVERNMENT

#### Organization

Dpt. of Veteran Affairs  
Dpt. of Homeland Security  
Environmental Protection Agency

#### Role

Public Affairs Intern  
Immigration Analyst  
Science Advisor

### PUBLIC POLICY

#### Organization

Brookings Institute  
Human Rights Watch  
The Bridgespan Group

#### Role

Researcher  
Policy Analyst  
Project & Research Assistant

### SERVICE NONPROFIT

#### Organization

Youth Guidance  
National Council of La Raza  
Metropolitan Family Services

#### Role

Case Manager  
Grassroots Manager  
Public Relations Assistant

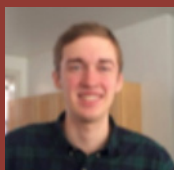
### PRIVATE SECTOR

#### Organization

Urban Partnership Bank  
Illinois Facility Fund  
National Community Investment Fund  
Stateside Associates

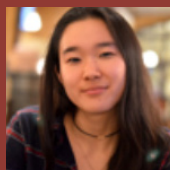
#### Role

Junior Analyst  
Research Development Manager  
Research Analyst



### Kent Keller (AB '17)

- Regulatory Associate, Stateside Associates.
- Internships: The Paulson Institute, Environmental Law & Policy



### Yumika Takeshita (AB '17)

- Fulbright Scholar, Humanity in Action Fellow.
- Internships: DonorsChoose.org, Manhattan Borough President