

Better internet for better business.



Advantage WiFi

Advantage WiFi is an enterprise-grade network solution for any size of business.

Key Benefits



Three separate networks, one killer speed

Don't keep your sensitive data on the same network as your customers. Advantage WiFi gives you a separate network for you, and another for them—plus a hotspot.

Keep your speed. Having multiple networks doesn't affect your network capabilities.



You won't believe your insights

Advantage WiFi's analytics can help you serve your customers better by understanding when and how long they're on your network.

Wondering why it matters? Knowing these patterns can help you develop custom business strategies for your market.



WiFi far and wide (and even wider)

Advantage WiFi gives you coverage in every square foot of your business.

Put your business on the map. Advantage WiFi allows your business to become a WiFi hotspot.

Support more end devices without compromising on performance with WiFi 6.



The cloud nine of cloud management

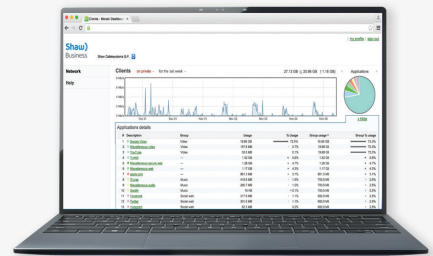
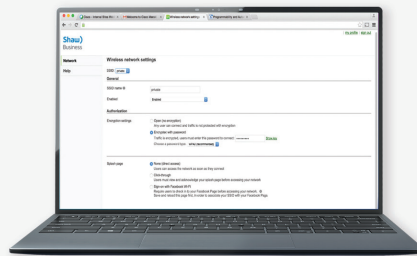
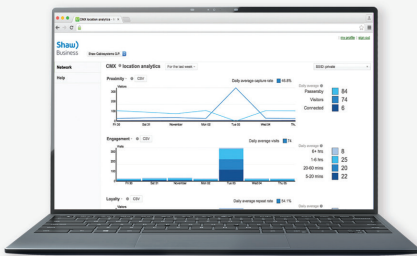
Automatic monitoring ensures your wireless network stays at top performance, all from behind the scenes.

Receive seamless over-the-web feature upgrades and updates.

Choose a plan as unique as your business.

	Advantage WiFi 75	Advantage WiFi 300	Advantage WiFi 750	Advantage WiFi GIG	Advantage WiFi GIG 1.5	Advantage WiFi GIG 2.0
Maximum download speed ¹	75 Mbps	300 Mbps	750 Mbps	1 Gbps	1.5 Gbps	2.0 Gbps
Maximum upload speed ¹	75 Mbps	125 Mbps	125 Mbps	150 Mbps	150 Mbps	200 Mbps
WiFi 6	✓	✓	✓	✓	✓	✓
Usage per month	Unlimited	Unlimited	Unlimited	Unlimited	Unlimited	Unlimited
Email accounts	10	10	10	10	10	10
WiFi hotspot location	✓	✓	✓	✓	✓	✓

Your network by the numbers



Location Analytics

Location analytics provide insights into your WiFi network traffic patterns, so you can make informed decisions to increase sales and boost repeat business.

Login Settings

Manage and customize your login settings to ensure all those on your WiFi network have a consistent experience. Add a custom splash page for login with your logo and company branding to suit your business.

Website Usage

Monitor application and website usage so you can track traffic and make smart marketing decisions.

Ready to take your Internet experience to the next level?

1-844-857-2320

business.shaw.ca/internet

1 Connection speeds may vary based on modem equipment, client device capability, building wiring, internet traffic and environmental conditions. "Up to" speeds are based on optimal conditions. Maximum download speed for a single hardwired device connection is 940 Mbps for the CODA-4582 modem or up to 2 Gbps for the CODA-5810 modem. Additional wired or wireless device connections are required to reach maximum download speeds of up to 1Gbps or 1.5Gbps (i.e. 2 or 3 x devices concurrently running at 500 Mbps each). Upload speeds vary by region depending on network infrastructure in your area. Advantage WiFi 300, 750, Gig, Gig 1.5 and Gig 2.0 upload speeds will be up to 125 Mbps, 150 Mbps, or 200 Mbps. Please call for more details at 1-877-742-9249.