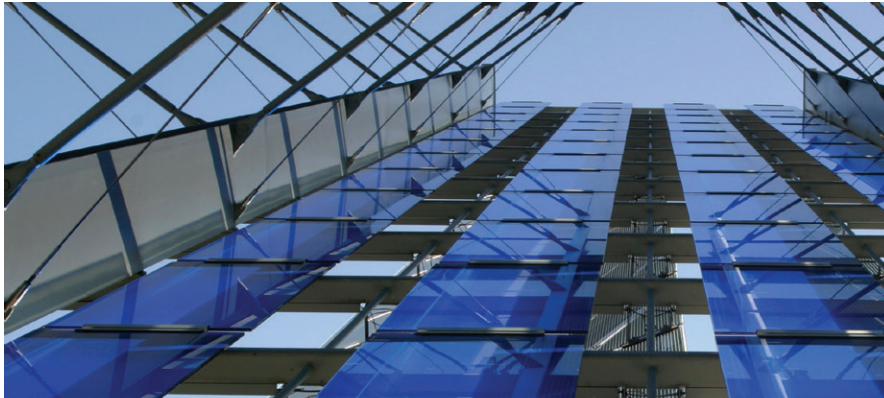


open
the
possibilities





facility Overview

The Austin Convention Center, a USGBC LEED® Gold EB certified building, is located in the heart of the capital of Texas, one of the most affordable cities in America. The convention center has a convenient downtown location, between the shores of Lady Bird Lake and historic Sixth Street. It has easy access to I-35, with over 10,000 downtown hotel rooms a short distance away.

Constructed of native Texas materials, from rustic limestone to polished granite, the facility's different facades reflect the architectural diversity of an historic and vibrant city. Most pre-function spaces have generous, attractive views of downtown Austin. The liberal use of windows connects attendees to the community, invites natural light and provides an open, airy experience.

Stretching over six city blocks and 881,400 gross square feet of space, the Center offers 247,052 square feet of column-free exhibit space divisible into five contiguous halls that can accommodate 1,289 10' X 10' booths. The fifth hall offers retractable riser seating for up to 1,500, making it an ideal location for general sessions, sporting events and concerts.

Ballrooms of all sizes are included in our meeting package options. The 40,510 square foot upper level Grand Ballroom on the north side is among the largest in Texas, where more than 3,000 can dine in style. The South Ballroom features a warm, intimate atmosphere and is the ideal setting for meetings, luncheons and dinners for up to 2,000. The Center boasts 54 meeting rooms and show offices that offer over 58,000 square feet and are located on all four levels. They are designed for maximum flexibility and are perfect for any size meeting.

www.austinconventioncenter.com

EXHIBIT HALLS, BALLROOMS AND MEETING ROOMS

1



Level

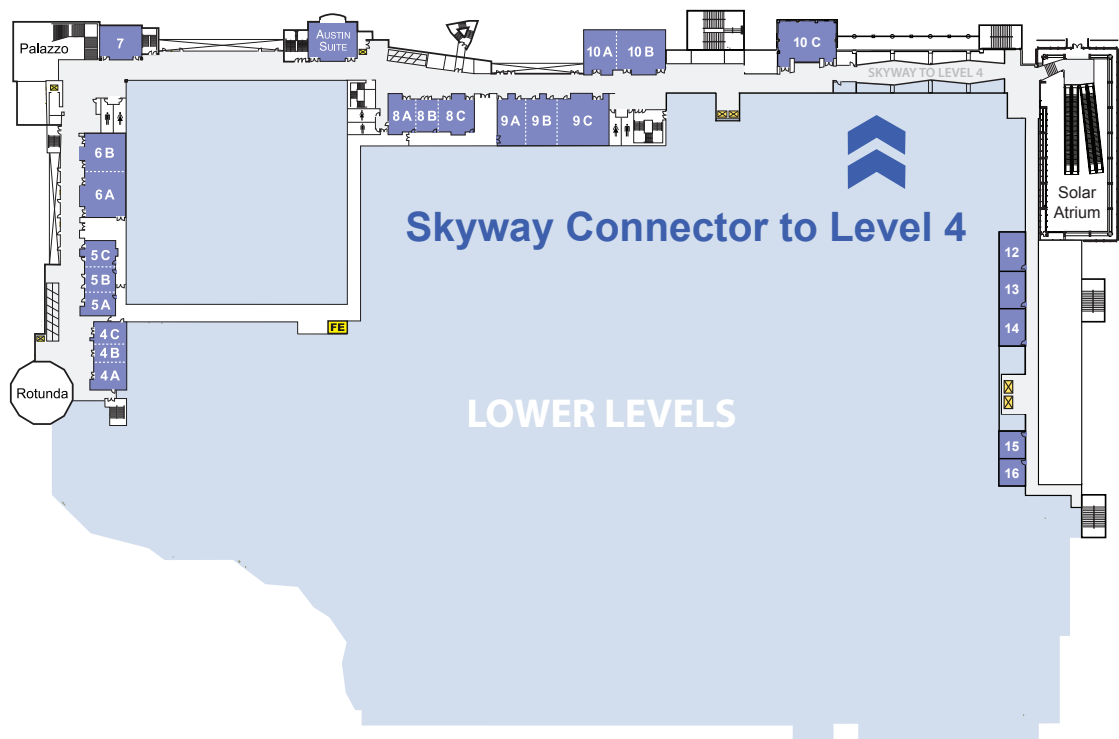
Exhibit Halls, Ballrooms and Meeting Rooms

		Dimensions	Gsf	Theatre	Classroom 30" Tables	Classroom 18" Tables	Banquet 66" Rounds	Ceiling Height Footage	Booths 10' x 10'
Exhibit Halls									
Exhibit Hall 1	210' x 210'	44,100	4,032	1,728	2,464	(As drawn)	31	225	
Exhibit Hall 2	120' x 272'	32,640	3,024	1,300	1,600	(As drawn)	31	179	
Exhibit Hall 3	181' x 272'	49,232	4,392	2,052	2,568	(As drawn)	31	280	
Exhibit Hall 4	260' x 305'	79,525	5,285	3,954	4,838	(As drawn)	31	410	
Exhibit Hall 5	183' x 227'	41,555	3,600	1,982	2,402	(As drawn)	31	195	
Totals (1-5)		247,052	20,333	11,016	13,872			1,289	
Ballrooms Level 1		Sq. Footage							
Ballroom A	104' x 147'	15,288	1,432	724	766	994	35		
Ballroom B	53' x 73'	3,896	373	164	176	224	35		
Ballroom C	58' x 73'	4,234	396	184	200	254	35		
Totals (A,B,C)		23,418	2,291	1,012	1,135	1,644			
Meeting Rooms Level 1									
1	29' x 31'	996	83	47	54	64	9		
2	28' x 38'	1,121	112	62	64	64	18		
3	34' x 45'	1,576	157	76	89	104	18		

Room dimensions are based on usable space. They do not include alcoves, angled walls or entry ways; therefore, the dimensions may be less than the gross square footage.

AUSTIN SUITE, MEETING ROOMS

3



Level

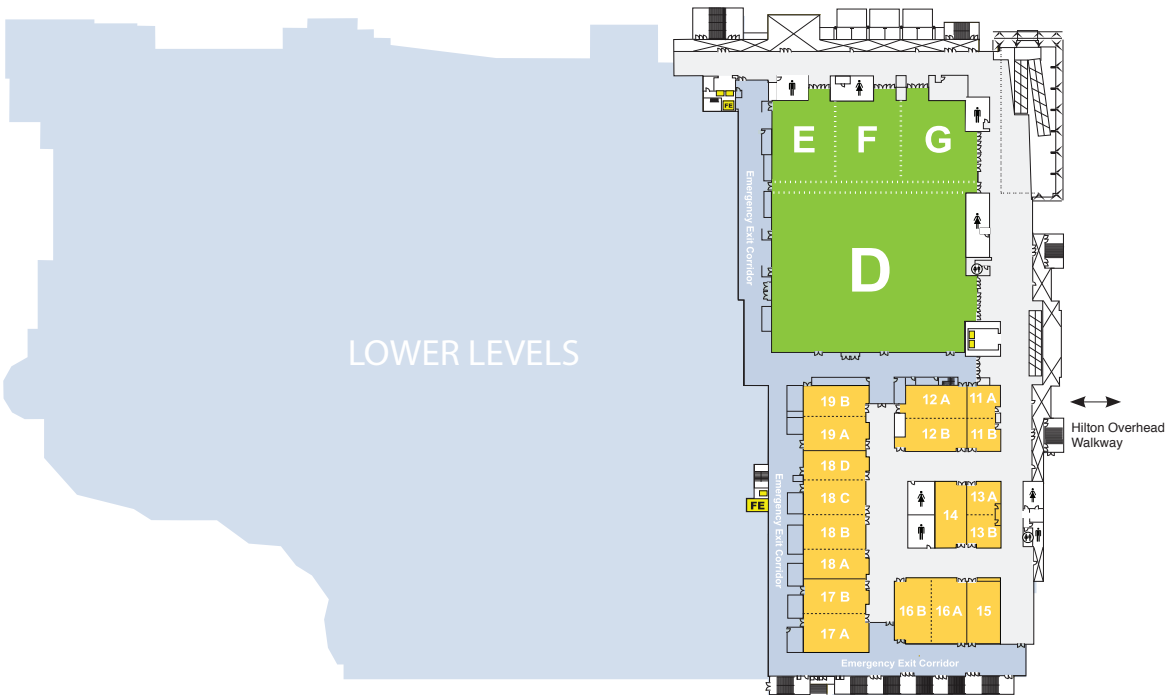
Austin Suite, Meeting Rooms and Show Offices

3

	Dimensions	GSF	Theatre	Classroom 30" Tables	Classroom 18" Tables	Banquet 66" Rounds	Ceiling Height Footage
4A	26' x 29'	770	84	34	41	44	17
4B	17' x 26'	442	48	22	25	24	17
4C	21' x 28'	595	68	28	32	34	17
4 (A, B, C)		1807	184	79	100	104	17
5A	22' x 35'	770	78	36	36	44	17
5B	23' x 29'	840	68	32	31	44	17
5C	25' x 29'	875	69	27	31	44	17
5 (A, B, C)		2485	225	88	104	124	17
6A	42' x 38'	1806	177	88	95	114	17
6B	35' x 37'	1512	144	74	74	94	17
6 (A, B)		3318	331	158	193	204	17
7	28' x 38'	1287	120	64	62	64	17
8A	26' x 38'	1014	95	37	40	44	17
8B	20' x 31'	780	61	25	28	44	17
8C	34' x 31'	1365	113	53	57	64	17
8 (A, B, C)		3159	298	114	144	174	17
9A	26' x 42'	1274	125	54	64	64	17
9B	30' x 42'	1470	147	67	76	64	17
9C	49' x 42'	2401	272	106	118	124	17
9 (A, B, C)		5145	504	229	289	324	17
10A	30' x 37'	1318	130	56	69	84	17
10B	45' x 42'	1913	188	83	101	104	17
10 (A, B)		3231	319	144	172	184	17
10C	29' x 46'	1350	131	56	76	74	12
Austin Suite	37' x 43'						
Show Office 12	19.5' x 28'	546					
Show Office 13	20' x 28'	560					
Show Office 14	20' x 27'	540					
Show Office 15	19.5' x 21'	409.5					
Show Office 16	19.5' x 21'	409.5					

GRAND BALLROOM, MEETING ROOMS

4



Level

Grand Ballroom and Meeting Rooms

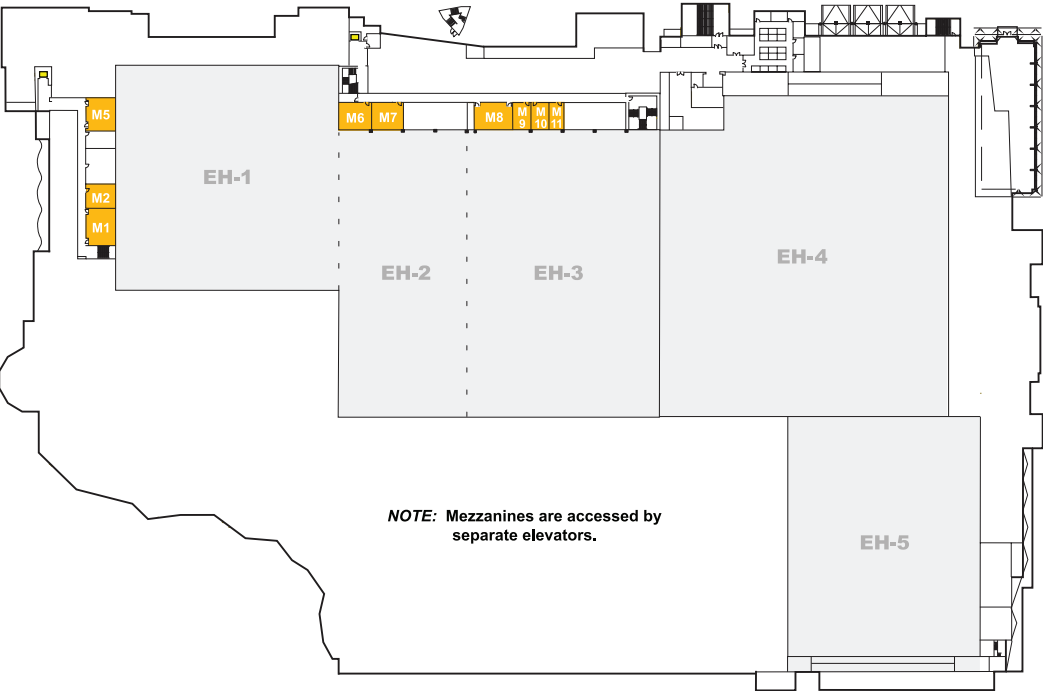
4

	Dimensions	GSF	Theatre	Classroom 30' Tables	Classroom 18' Tables	Banquet 66" Rounds	Ceiling Height Footage
Ballroom D	148' x 178'	26,540	2,408	1,236	1,516	1,824	26
Ballroom E	72' x 59'	4,470	471	212	274	274	26
Ballroom F	72' x 59'	4,570	481	243	293	274	26
Ballroom G	72' x 68'	4,930	452	194	235	274	26
Totals (D-G)		40,510	3,940	2,172	2,488	3,084	26
Meeting Rooms Level 4							
11A	24' x 30'	827	70	34	41	44	15
11B	27' x 24'	770	70	33	40	44	15
11 (A, B)		1,597	160	72	94	104	15
12A	30' x 54'	1,690	200	88	109	114	15
12B	31' x 54'	1,750	190	93	105	114	15
12 (A, B)		3,440	393	172	211	244	15
13A	23' x 29'	815	67	37	47	44	15
13B	23' x 26'	754	67	33	40	44	15
13 (A, B)		1,569	152	79	94	104	15
14	55' x 28'	1,650	207	104	128	94	15
15	28' x 57'	1,617	207	104	128	94	15
16A	32' x 57'	1,859	202	115	124	124	15
16B	33' x 59'	1,952	230	123	137	124	15
16 (A, B)		3,811	424	207	257	244	15
17A	56' x 36'	2,103	257	124	156	144	15
17B	56' x 31'	1,790	219	102	128	134	15
17 (A, B)		3,893	488	211	273	254	15
18A	56' x 26'	1,516	181	88	110	94	15
18B	56' x 32'	1,803	222	110	138	124	15
18C	56' x 32'	1,803	222	108	136	124	15
18D	56' x 26'	1,503	182	85	107	94	15
18 (A, B, C, D)		6,625	820	378	466	504	15
19A	56' x 30'	1,790	212	102	128	124	15
19B	56' x 28'	1,610	184	94	118	94	15
19 (A, B)		3,400	424	185	235	274	15

Room dimensions are based on usable space. They do not include alcoves, angled walls or entry ways; therefore, the dimensions may be less than the gross square footage.

MEZZANINE LEVEL SHOW OFFICES

2



Level

2

Mezzanine Level Show Offices

Show Offices

- ML Show Office 1
- ML Show Office 2
- ML Show Office 5
- ML Show Office 6
- ML Show Office 7
- ML Show Office 8
- ML Show Office 9
- ML Show Office 10
- ML Show Office 11

Dimensions

- 27' x 35'
- 21' x 27'
- 27' x 30'
- 26' x 28'
- 26' x 30'
- 22' x 36'
- 16' x 24'
- 16' x 25'
- 13' x 24'

Gsf

- 950
- 586
- 850
- 928
- 880
- 826
- 399
- 500
- 375

