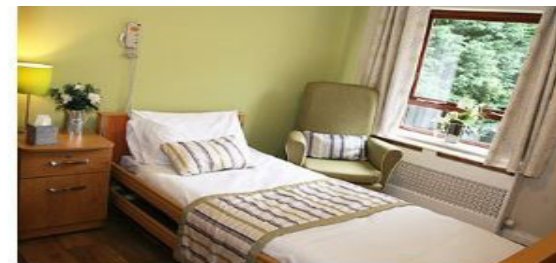
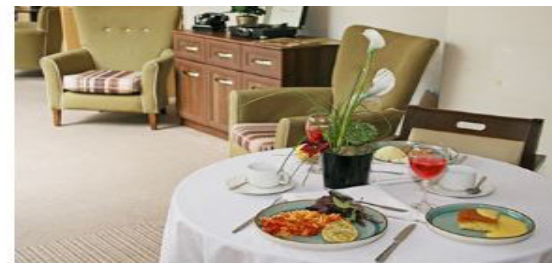
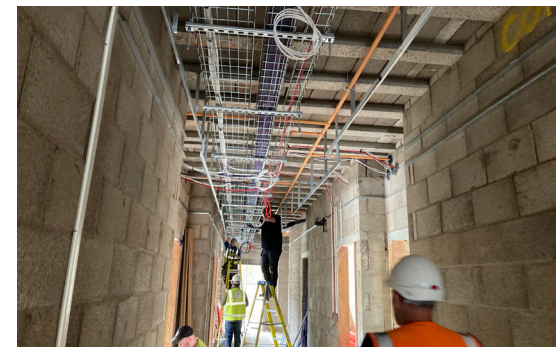


COUNTRY COURT CARE GROUP

Country Court Care Group launches new ground-up development in the care home market.

- The Group are a top ten specialist residential care home provider in the UK and have been a family run business for 40 years.
- Cynergy Bank have provided a loan amount of £8.323m for a ground-up development for a 63-bed residential care home site in Halesowen, Birmingham. This is the Group's 37th care home and the Bank's first ground-up development in the care home space.
- Cynergy Bank have assisted the customer by taking the time to understand the business and the opportunities for growth that have been presented with the Group's proven model. The Bank provided funding by going to the policy limit parameters and being able to adapt in an ever-changing environment.
- The Bank created a proposal by utilising its underwriting expertise which demonstrates the Bank's human digital proposition. This shows how the Bank is a flexible partner for the business, exploring the right transaction to meet the customer needs to form a great deal for all parties.
- The development loan is for 24 months, which is made up of 15 month build period and a nine month fill up of the home with all interest capitalised throughout.



How we succeeded together

"It has been a pleasure to work with the Cynergy Bank team on this deal which has been led by Carl Bowcher. Throughout the process, Carl and his team have communicated efficiently and supported us at all stages. We look forward to growing a strong business relationship with Cynergy Bank."

AL-KARIM KACHRA, COMPANY DIRECTOR, COUNTRY COURT CARE GROUP

"It has been a real pleasure working with the Group to bring on board such a fantastic customer. They are extremely experienced and operate nationally with a great presence in the care market. Whilst this is a new-to-Bank relationship, I feel that this is the first of many to come – Welcome to the Cynergy Bank family!"

CARL BOWCHER, SENIOR RELATIONSHIP DIRECTOR, CYNERGY BANK

The information contained in this deal sheet is for general information purposes only and should not be relied upon and does not commit Cynergy Bank Limited (the "Bank") to any specific course of action. The Bank makes no representations or warranties regarding the accuracy or completeness of the information contained in this deal sheet. The Bank does not assume liability for any damage that may be caused or any loss that may be suffered by anyone as a result of any action (or omission) on the basis of the information contained herein.