

# BEST 9K Cylindrical locks

## Key Figures

Lifetime per unit: 65,000,000 cycles

Weight per unit: 2.1 kg

Electricity use per year: 21.9 kWh

Production location: Indianapolis, US

## Production standards

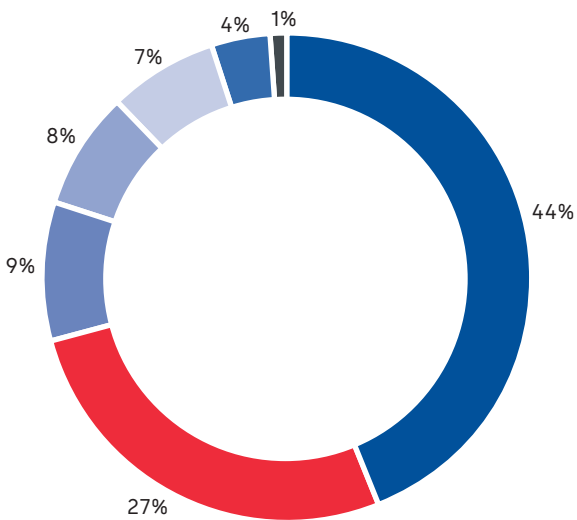
Quality	Environmental	Occupational Health & Safety	Energy	Produced with green electricity
ISO 9001 certified	ISO 14001 certified			

## Product declarations

Environmental Product Declaration	Health Product Declaration	Building Product Declaration	SuPIM Data Sheet
✓	✓		

## Material used (%)

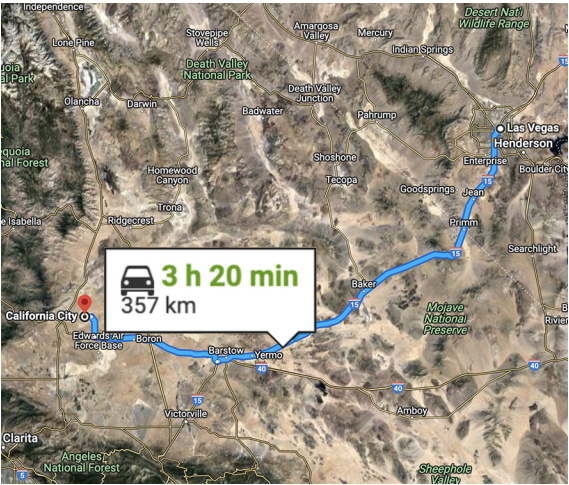
Zinc Steel Paper Electronics  
Stainless steel Brass Other



<sup>1</sup> Carbon dioxide equivalent (CO<sub>2</sub>e) is the universal unit of measurement to indicate the global warming potential (GWP) of each of the six greenhouse gases, expressed in terms of the GWP of one unit of carbon dioxide. It is used to evaluate releasing (or avoiding releasing) different greenhouse gases against a common basis.

## The GWP<sup>1</sup> across the life cycle is 125 kg CO<sub>2</sub>e

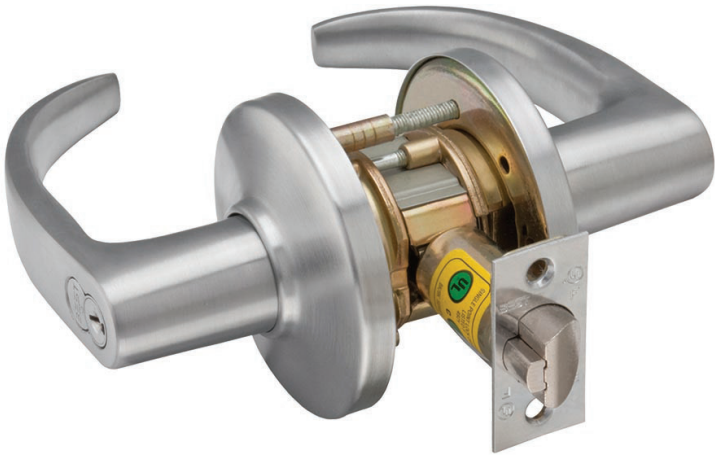
This is similar to the CO<sub>2</sub> produced from a road trip with a diesel mid-range car from Las Vegas to California



Scan the QR code or click here for more information about sustainability



Scan the QR code or click here for more information about our sustainability product declaration.



## Description

Quick installation, proven reliability and enhanced safety all make the 9K the grade 1 cylindrical lock of choice for many. But its wide compatibility with most large format interchangeable cores, regardless of brand, make it a legend. Whether you want to upgrade old hardware or fit out a new facility, the 9K is a great match.

## Total Global Warming Potential per life cycle stage (kg CO<sub>2</sub>e)

