

ITS 96

Integrated door closer

Key Figures

Lifetime per unit: 20 years
Weight per unit: 2.7 kg
Production location: Ennepetal, Germany

Production standards

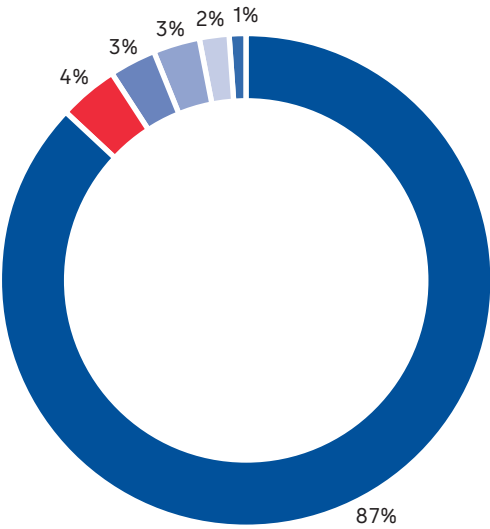
Quality	Environmental	Occupational Health & Safety	Energy	Produced with green electricity
ISO 9001 certified	ISO 14001 certified	ISO 45001 certified	ISO 50001 certified	✓

Product declarations

Environmental Product Declaration	Health Product Declaration	Building Product Declaration	SuPIM Data Sheet
✓	✓	✓	✓

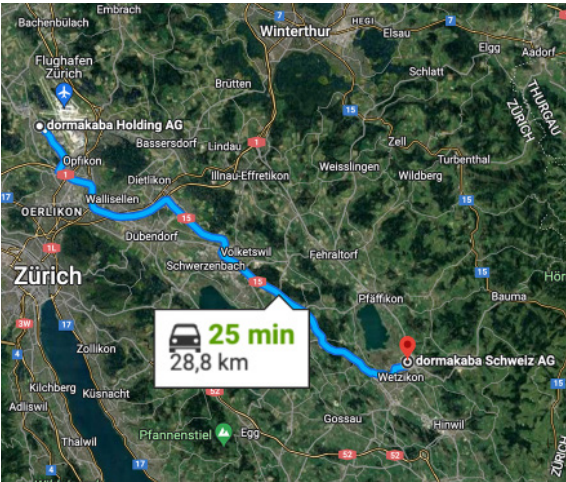
Material used (%)

Steel Oil Paint Paper Zinc Plastic



The GWP¹ across the life cycle is 4 kg CO₂e

This is similar to the CO₂ produced from a road trip with a diesel mid-range car from Rümlang to Wetzikon



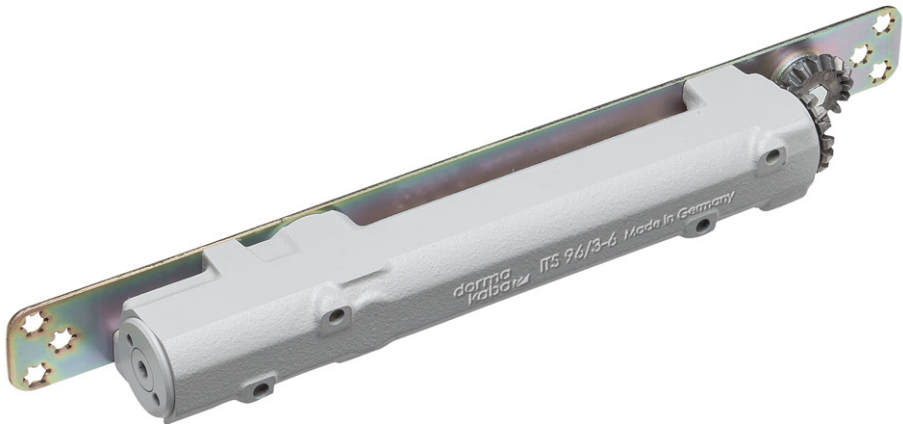
¹ Carbon dioxide equivalent (CO₂e) is the universal unit of measurement to indicate the global warming potential (GWP) of each of the six greenhouse gases, expressed in terms of the GWP of one unit of carbon dioxide. It is used to evaluate releasing (or avoiding releasing) different greenhouse gases against a common basis.



Scan the QR code or click here for more information about sustainability



Scan the QR code or click here for more information about our sustainability product declaration.



Description

The integrated ITS 96 slide channel door closer system is a modular and multifunctional system comprising only with a few door closer models and various slide channels which complies with many functional requirements. The dormakaba ITS 96 door closer is designed for concealed installation in the door leaf and frame. Suitable for almost every type of door, it offers a wide variety of functions and flexibility combined with a high level of quality. Because of its compact design, the ITS 96 system can be concealed for virtual invisibility within the door and frame, integrating inconspicuously with the overall architectural ambience.

Total Global Warming Potential per life cycle stage (kg CO₂e)

