

ES 400

Sliding door operator

Key Figures

Lifetime per unit: 5 years
Weight per unit: 16.6 kg
Electricity use per year: 200 kWh
Production location: Zusmarshausen, Germany

Production standards

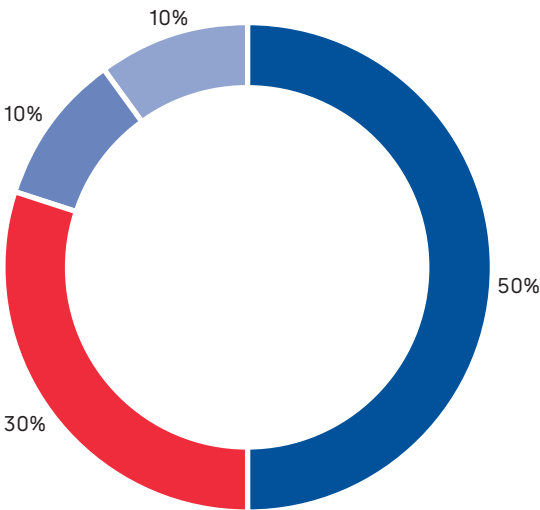
| Quality | Environmental | Occupational Health & Safety | Energy | Produced with green electricity |
|--------------------|---------------------|------------------------------|--------|---------------------------------|
| ISO 9001 certified | ISO 14001 certified | ISO 45001 certified | | ✓ |

Product declarations

| Environmental Product Declaration | Health Product Declaration | Building Product Declaration | SuPIM Data Sheet |
|-----------------------------------|----------------------------|------------------------------|------------------|
| ✓ | | | |

Material used (%)

■ Aluminium ■ Electronics ■ Steel ■ Plastic



The GWP¹ across the life cycle is 443 kg CO₂e

This is similar to the CO₂ produced from a roundtrip flight from Paris to Rome (2,200 km)



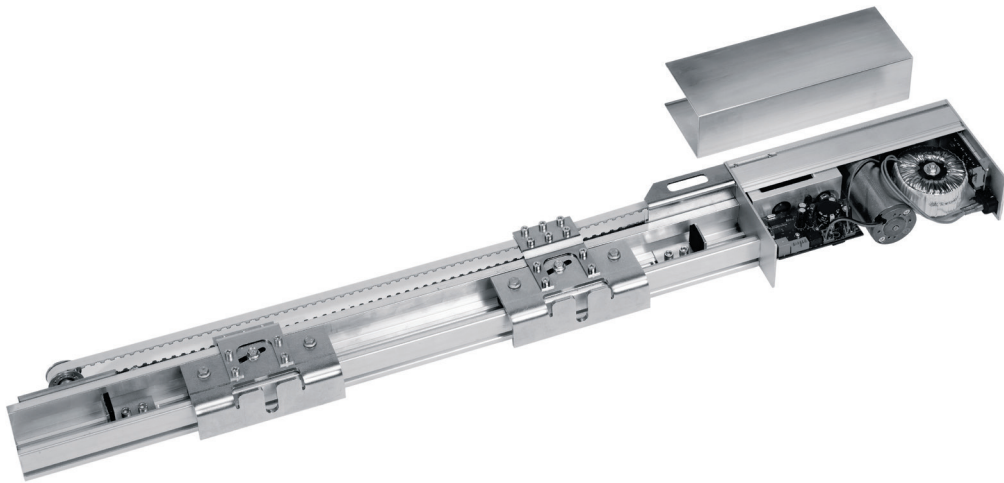
¹ Carbon dioxide equivalent (CO₂e) is the universal unit of measurement to indicate the global warming potential (GWP) of each of the six greenhouse gases, expressed in terms of the GWP of one unit of carbon dioxide. It is used to evaluate releasing (or avoiding releasing) different greenhouse gases against a common basis.



Scan the QR code or click here for more information about sustainability



Scan the QR code or click here for more information about our sustainability product declaration.



Description

As a compact and innovative sliding door operator, the ES 400 is especially suitable for application in hospitals, institutes or laboratories. Thanks to its simple and lowmaintenance design, it guarantees easy handling and reliable function as well as a long life cycle.

Total Global Warming Potential per life cycle stage (kg CO₂e)

